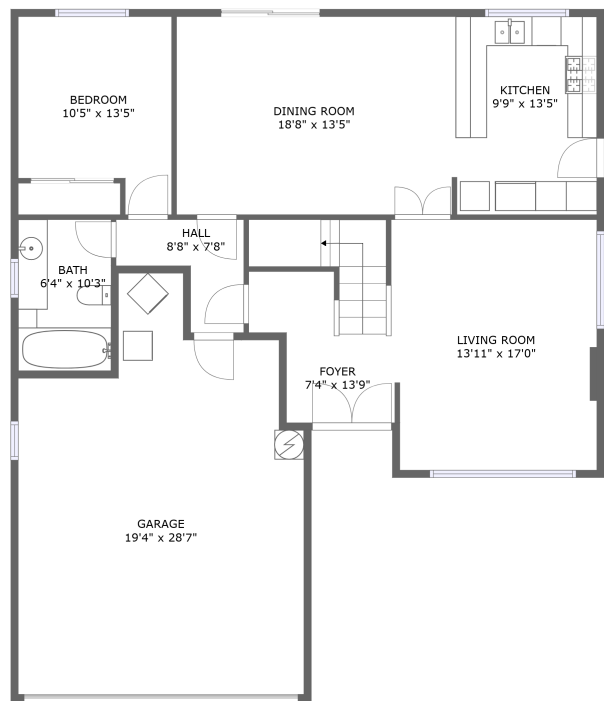
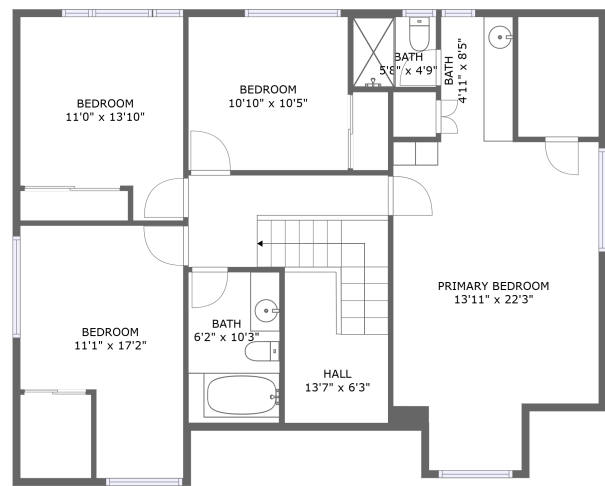


Home report

7131 Caprice Circle, La Palma, Orange County, California, United States, 90623



FLOOR 1




FLOOR 2

Total Area: 2137 sq. ft
Floor 1: 1003 sq. ft, Floor 2: 1134 sq. ft
Excluded: Garage 457 sq. ft, Walls: 183 sq. ft

Property summary

 **2** Floors

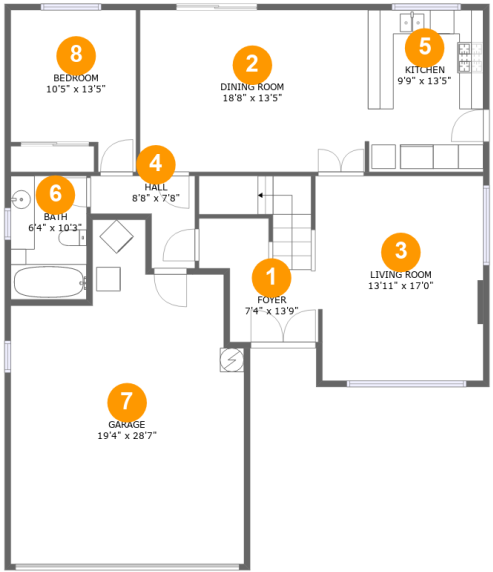
 **5** Bedrooms

 **3** Bathrooms

 **1** Garages

Home report

7131 Caprice Circle, La Palma, Orange County, California, United States, 90623



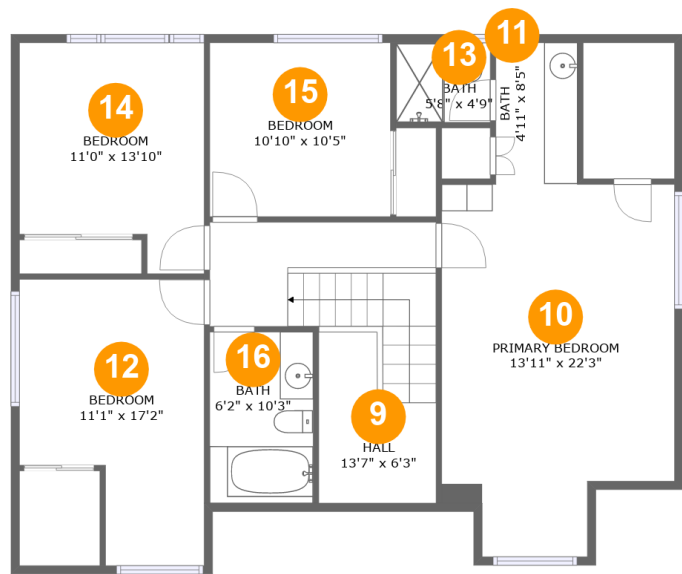
Room dimensions

Floor 1 Total:1003sqft Excluded: 457sqft

| # | | Max Dimensions | sqft | Included |
|---|-------------|----------------|------------|----------|
| 1 | Foyer | 7'4" x 13'9" | 114 sq. ft | Yes |
| 2 | Dining Room | 18'8" x 13'5" | 250 sq. ft | Yes |
| 3 | Living Room | 13'11" x 17'0" | 233 sq. ft | Yes |
| 4 | Hall | 8'8" x 7'8" | 43 sq. ft | Yes |
| 5 | Kitchen | 9'9" x 13'5" | 131 sq. ft | Yes |
| 6 | Bath | 6'4" x 10'3" | 65 sq. ft | Yes |
| 7 | Garage | 19'4" x 28'7" | 457 sq. ft | No |
| 8 | Bedroom | 10'5" x 13'5" | 122 sq. ft | Yes |

Home report

7131 Caprice Circle, La Palma, Orange County, California, United States, 90623

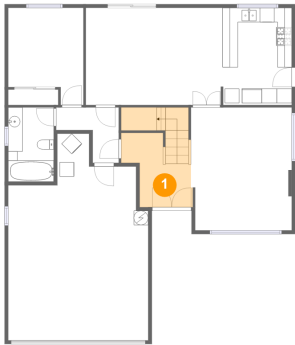


Room dimensions

Floor 2 Total:1134sqft Excluded: 0sqft

| # | | Max Dimensions | sqft | Included |
|----|-----------------|----------------|------------|----------|
| 9 | Hall | 13'7" x 6'3" | 159 sq. ft | Yes |
| 10 | Primary Bedroom | 13'11" x 22'3" | 279 sq. ft | Yes |
| 11 | Bath | 4'11" x 8'5" | 41 sq. ft | Yes |
| 12 | Bedroom | 11'1" x 17'2" | 158 sq. ft | Yes |
| 13 | Bath | 5'8" x 4'9" | 27 sq. ft | Yes |
| 14 | Bedroom | 11'0" x 13'10" | 135 sq. ft | Yes |
| 15 | Bedroom | 10'10" x 10'5" | 112 sq. ft | Yes |
| 16 | Bath | 6'2" x 10'3" | 63 sq. ft | Yes |

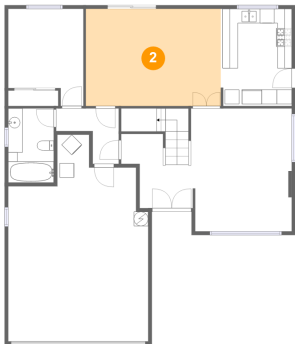
1 Floor 1 - Foyer



Max Dimensions: 7'4" x 13'9"
Calculated Area: 114 sq. ft
Included: Yes

Heated: Yes
Finished: Yes
Enclosed: Yes
Contiguous: Yes
Permitted: Yes
Wet space: No
Addition: No
Conversion: No

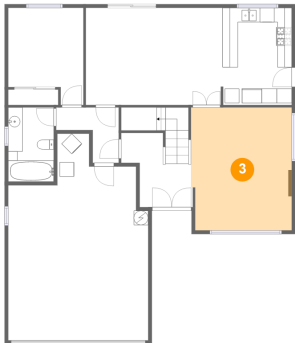
2 Floor 1 - Dining Room



Max Dimensions: 18'8" x 13'5"
Calculated Area: 250 sq. ft
Included: Yes

Heated: Yes
Finished: Yes
Enclosed: Yes
Contiguous: Yes
Permitted: Yes
Wet space: No
Addition: No
Conversion: No

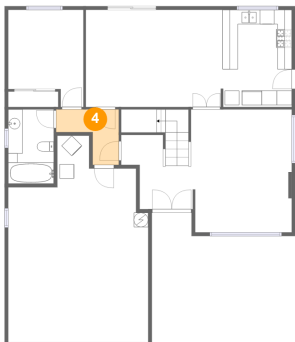
3 Floor 1 - Living Room



Max Dimensions: 13'11" x 17'0"
Calculated Area: 233 sq. ft
Included: Yes

Heated: Yes
Finished: Yes
Enclosed: Yes
Contiguous: Yes
Permitted: Yes
Wet space: No
Addition: No
Conversion: No

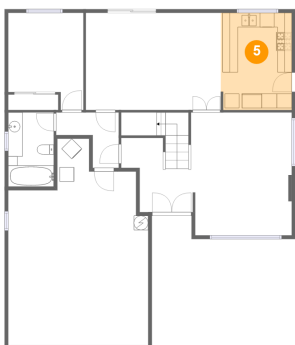
4 Floor 1 - Hall



Max Dimensions: 8'8" x 7'8"
Calculated Area: 43 sq. ft
Included: Yes

Heated: Yes
Finished: Yes
Enclosed: Yes
Contiguous: Yes
Permitted: Yes
Wet space: No
Addition: No
Conversion: No

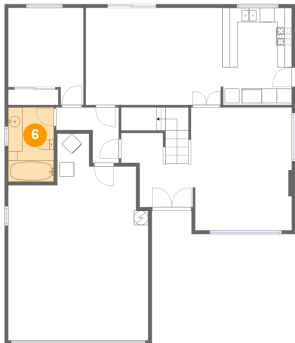
5 Floor 1 - Kitchen



Max Dimensions: 9'9" x 13'5"
Calculated Area: 131 sq. ft
Included: Yes

Heated: Yes
Finished: Yes
Enclosed: Yes
Contiguous: Yes
Permitted: Yes
Wet space: No
Addition: No
Conversion: No

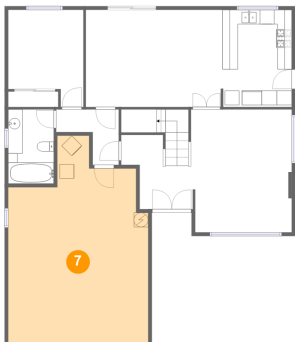
6 Floor 1 - Bath



Max Dimensions: 6'4" x 10'3"
Calculated Area: 65 sq. ft
Included: Yes

Heated: Yes
Finished: Yes
Enclosed: Yes
Contiguous: Yes
Permitted: Yes
Wet space: Yes
Addition: No
Conversion: No

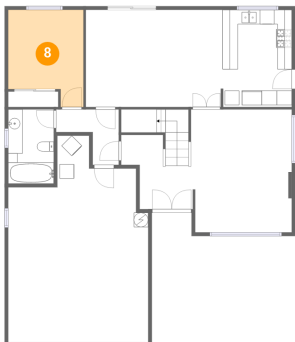
7 Floor 1 - Garage



Max Dimensions: 19'4" x 28'7"
Calculated Area: 457 sq. ft
Included: No

Heated: No
Finished: No
Enclosed: Yes
Contiguous: Yes
Permitted: Yes
Wet space: No
Addition: No
Conversion: No

8 Floor 1 - Bedroom

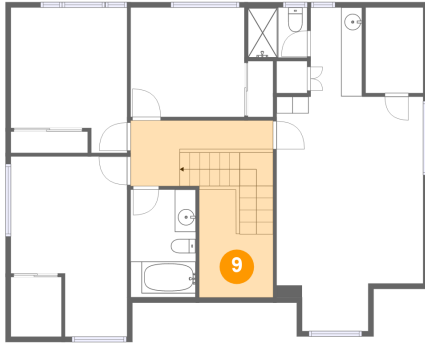


Max Dimensions: 10'5" x 13'5"
Calculated Area: 122 sq. ft
Included: Yes

Heated: Yes
Finished: Yes
Enclosed: Yes
Contiguous: Yes
Permitted: Yes
Wet space: No
Addition: No
Conversion: No

7131 Caprice Circle, La Palma, Orange County, California, United States, 90623

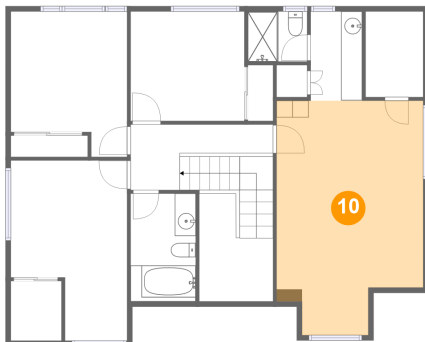
9 Floor 2 - Hall



Max Dimensions: 13'7" x 6'3"
Calculated Area: 159 sq. ft
Included: Yes

Heated: Yes
Finished: Yes
Enclosed: Yes
Contiguous: Yes
Permitted: Yes
Wet space: No
Addition: No
Conversion: No

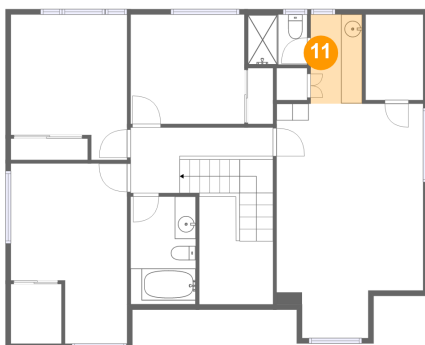
10 Floor 2 - Primary Bedroom



Max Dimensions: 13'11" x 22'3"
Calculated Area: 279 sq. ft
Included: Yes

Heated: Yes
Finished: Yes
Enclosed: Yes
Contiguous: Yes
Permitted: Yes
Wet space: No
Addition: No
Conversion: No

11 Floor 2 - Bath

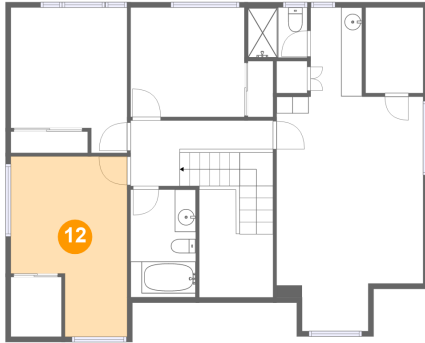


Max Dimensions: 4'11" x 8'5"
Calculated Area: 41 sq. ft
Included: Yes

Heated: Yes
Finished: Yes
Enclosed: Yes
Contiguous: Yes
Permitted: Yes
Wet space: Yes
Addition: No
Conversion: No

7131 Caprice Circle, La Palma, Orange County, California, United States, 90623

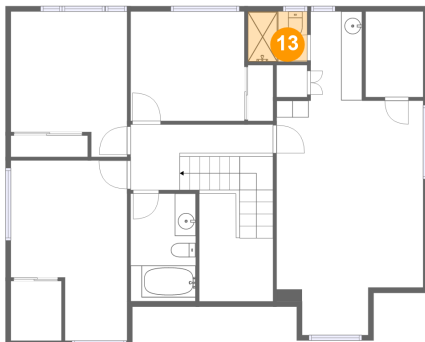
12 Floor 2 - Bedroom



Max Dimensions: 11'1" x 17'2"
Calculated Area: 158 sq. ft
Included: Yes

Heated: Yes
Finished: Yes
Enclosed: Yes
Contiguous: Yes
Permitted: Yes
Wet space: No
Addition: No
Conversion: No

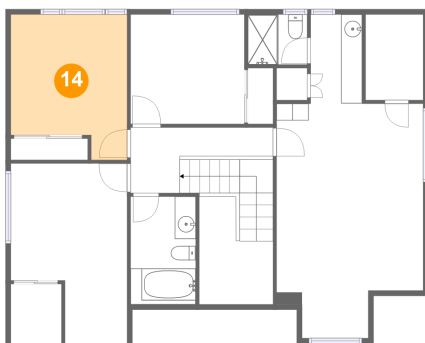
13 Floor 2 - Bath



Max Dimensions: 5'8" x 4'9"
Calculated Area: 27 sq. ft
Included: Yes

Heated: Yes
Finished: Yes
Enclosed: Yes
Contiguous: Yes
Permitted: Yes
Wet space: Yes
Addition: No
Conversion: No

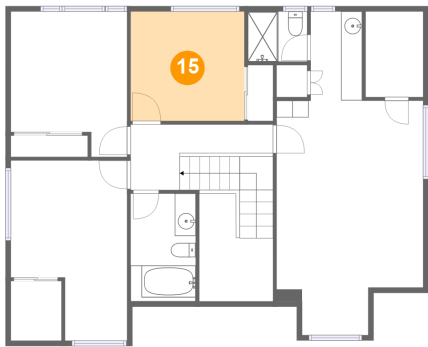
14 Floor 2 - Bedroom



Max Dimensions: 11'0" x 13'10"
Calculated Area: 135 sq. ft
Included: Yes

Heated: Yes
Finished: Yes
Enclosed: Yes
Contiguous: Yes
Permitted: Yes
Wet space: No
Addition: No
Conversion: No

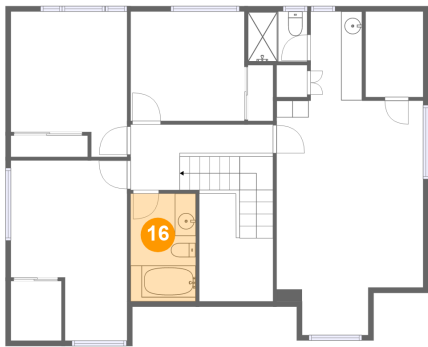
15 Floor 2 - Bedroom



Max Dimensions: 10'10" x 10'5"
Calculated Area: 112 sq. ft
Included: Yes

Heated: Yes
Finished: Yes
Enclosed: Yes
Contiguous: Yes
Permitted: Yes
Wet space: No
Addition: No
Conversion: No

16 Floor 2 - Bath



Max Dimensions: 6'2" x 10'3"
Calculated Area: 63 sq. ft
Included: Yes

Heated: Yes
Finished: Yes
Enclosed: Yes
Contiguous: Yes
Permitted: Yes
Wet space: Yes
Addition: No
Conversion: No