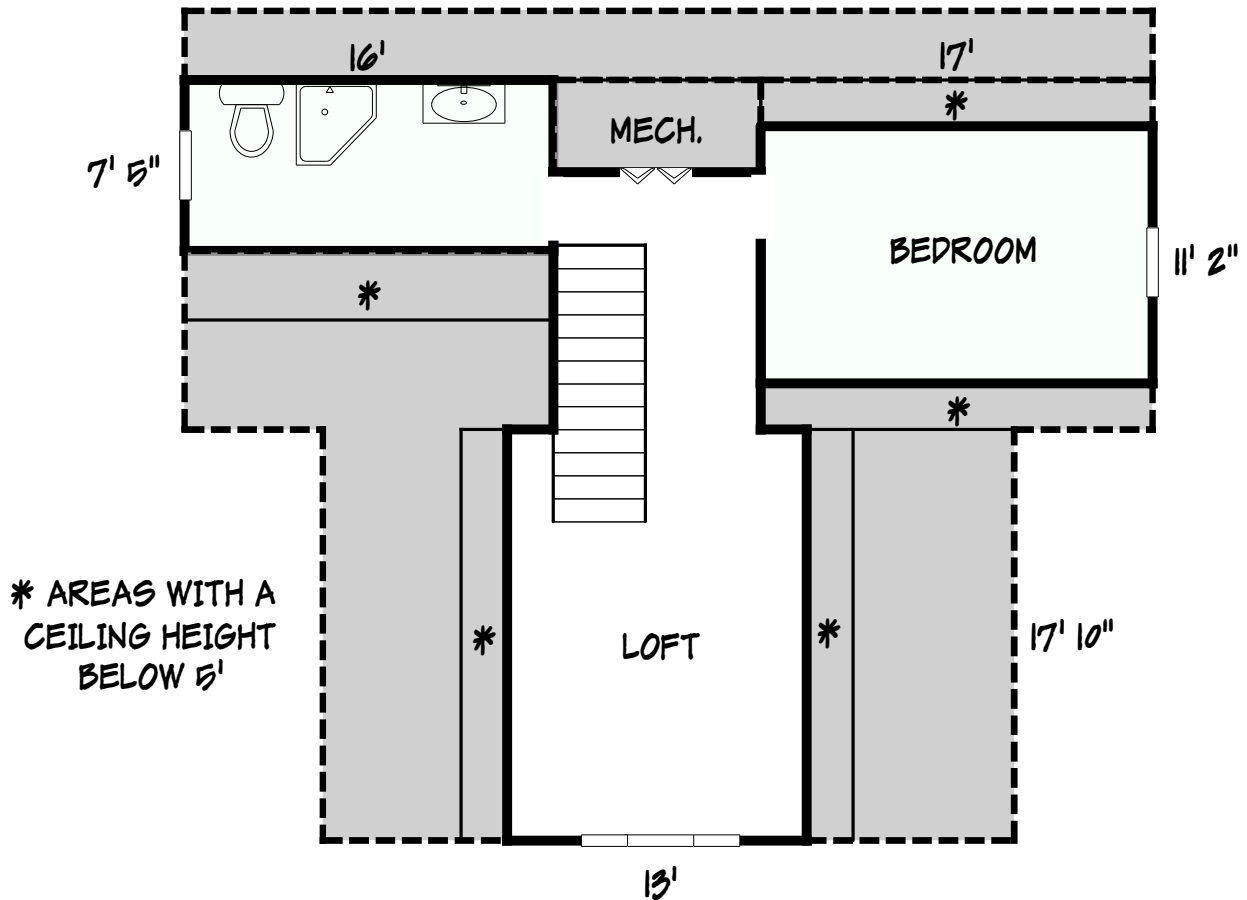


SECOND FLOOR TOTAL
[640.64 SQ FT]

SECOND FLOOR NET
[332.34 SQ FT]



BATHROOM & BEDROOM CEILING HEIGHT IS BELOW 7'
LOFT / HALL CEILING HEIGHT IS AN AREA
WHERE MORE THAN 50% OF THE TOTAL AREA
IS GREATER THAN 7'

Area Calculations Summary

Living Area		Calculation Details	
First Floor	1298 Sq ft	$42 \times 18.17 = 763$ $17.83 \times 30 = 535$	
Second Floor (not calculated in HLA)	189.83 Sq ft	$11.17 \times 17 = 189.83$ $0.5 \times 9.17 \times 0 = 0$ $0.5 \times 2 \times 0 = 0$	
Second Floor Net	332.34 Sq ft	$13 \times 17.83 = 231.83$ $11.17 \times 9 = 100.5$ $0.5 \times 9.17 \times 0 = 0$ $2 \times 0 = 0$	
Second Floor (not calculated in HLA)	<u>118.67 Sq ft</u>	$16 \times 7.42 = 118.67$	
Total Living Area (Rounded):		1630 SqFt	
Non-living Area			
Porch	60 Sq ft	$10 \times 6 = 60$	
Porch	189 Sq ft	$28 \times 6.75 = 189$	