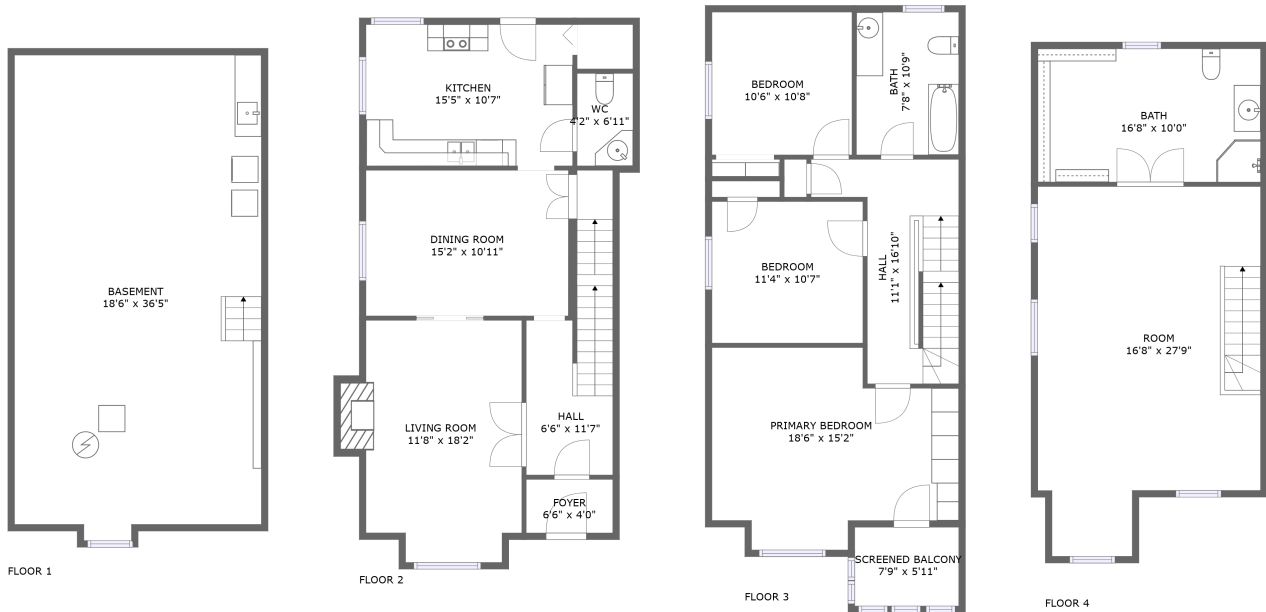


73 2 Ave, Glebe - Dows Lake, The Glebe, Ottawa, Ontario, Canada, K1S 2H4, B




Property summary

 **0** Garages

 **3** Bedrooms

 **1** Bathrooms

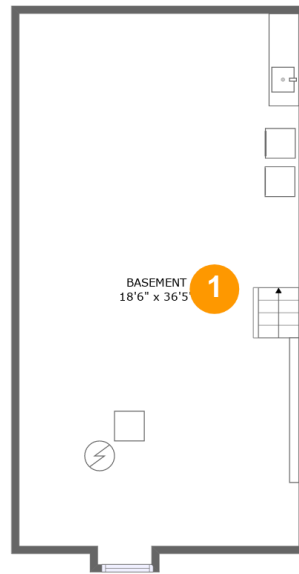
 **2** Half baths

 **4** Floors

 **2,033**
Gross living
area sqft

 **2,955**
Total sqft

**73 2 Ave, Glebe - Dows Lake, The Glebe, Ottawa,
Ontario, Canada, K1S 2H4, B**



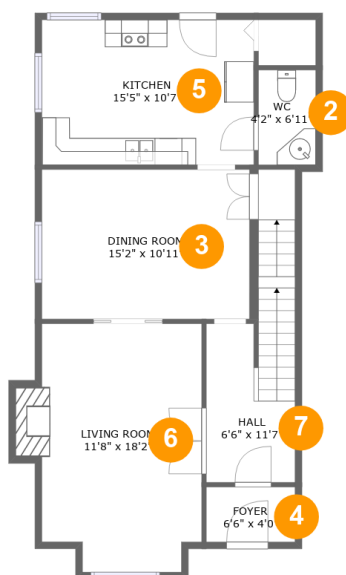
Room dimensions

Floor 1

Total sqft: 694 Living area: 0

#		Dimensions	sqft	Counted as living area
1	Basement	18'6" x 36'5"	656 sq. ft	No

73 2 Ave, Glebe - Dows Lake, The Glebe, Ottawa,
Ontario, Canada, K1S 2H4, B



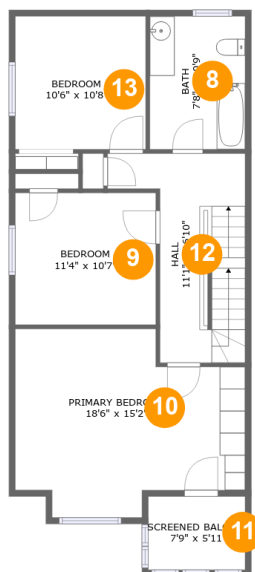
Room dimensions

Floor 2

Total sqft: 806 Living area: 796

#		Dimensions	sqft	Counted as living area
2	WC	4'2" x 6'11"	29 sq. ft	Yes
3	Dining Room	15'2" x 10'11"	166 sq. ft	Yes
4	Foyer	6'6" x 4'0"	26 sq. ft	Yes
5	Kitchen	15'5" x 10'7"	164 sq. ft	Yes
6	Living Room	11'8" x 18'2"	212 sq. ft	Yes
7	Hall	6'6" x 11'7"	104 sq. ft	Yes

73 2 Ave, Glebe - Dows Lake, The Glebe, Ottawa,
Ontario, Canada, K1S 2H4, B



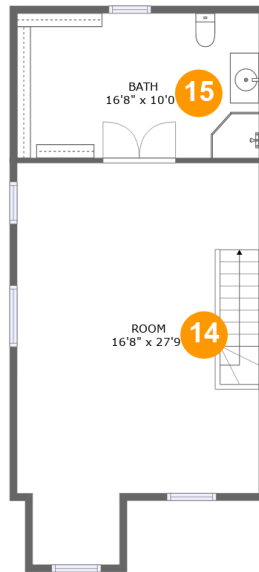
Room dimensions

Floor 3

Total sqft: 826 Living area: 772

#		Dimensions	sqft	Counted as living area
8	Bath	7'8" x 10'9"	82 sq. ft	Yes
9	Bedroom	11'4" x 10'7"	120 sq. ft	Yes
10	Primary Bedroom	18'6" x 15'2"	234 sq. ft	Yes
11	Screened Balcony	7'9" x 5'11"	46 sq. ft	No
12	Hall	11'1" x 16'10"	127 sq. ft	Yes
13	Bedroom	10'6" x 10'8"	112 sq. ft	Yes

**73 2 Ave, Glebe - Dows Lake, The Glebe, Ottawa,
Ontario, Canada, K1S 2H4, B**



Room dimensions

Floor 4

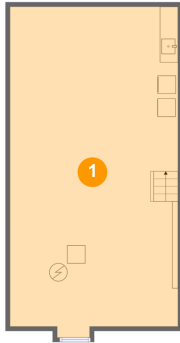
Total sqft: 629

Living area: 465

#		Dimensions	sqft	Counted as living area
14	Room	16'8" x 27'9"	327 sq. ft	Yes
15	Bath	16'8" x 10'0"	121 sq. ft	No

73 2 Ave, Glebe - Dows Lake, The Glebe, Ottawa,
Ontario, Canada, K1S 2H4, B

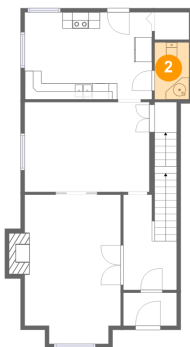
1 Floor 1 - Basement



Dimensions: 18'6" x 36'5"
Area: 656 sq. ft
Counted as living area: No

Heated: No
Finished: No
Enclosed: Yes
Contiguous: Yes
Permitted: Yes
Wet space: No
Addition: No
Conversion: No

2 Floor 2 - WC



Dimensions: 4'2" x 6'11"
Area: 29 sq. ft
Counted as living area: Yes

Heated: Yes
Finished: Yes
Enclosed: Yes
Contiguous: Yes
Permitted: Yes
Wet space: No
Addition: No
Conversion: No

73 2 Ave, Glebe - Dows Lake, The Glebe, Ottawa,
Ontario, Canada, K1S 2H4, B

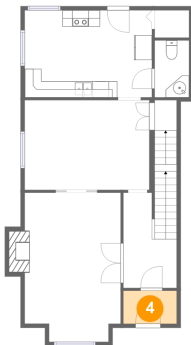
3 Floor 2 - Dining Room



Dimensions: 15'2" x 10'11"
Area: 166 sq. ft
Counted as living area: Yes

Heated: Yes
Finished: Yes
Enclosed: Yes
Contiguous: Yes
Permitted: Yes
Wet space: No
Addition: No
Conversion: No

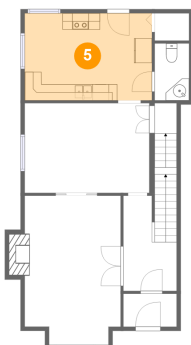
4 Floor 2 - Foyer



Dimensions: 6'6" x 4'0"
Area: 26 sq. ft
Counted as living area: Yes

Heated: Yes
Finished: Yes
Enclosed: Yes
Contiguous: Yes
Permitted: Yes
Wet space: No
Addition: No
Conversion: No

5 Floor 2 - Kitchen



Dimensions: 15'5" x 10'7"
Area: 164 sq. ft
Counted as living area: Yes

Heated: Yes
Finished: Yes
Enclosed: Yes
Contiguous: Yes
Permitted: Yes
Wet space: No
Addition: No
Conversion: No

73 2 Ave, Glebe - Dows Lake, The Glebe, Ottawa,
Ontario, Canada, K1S 2H4, B

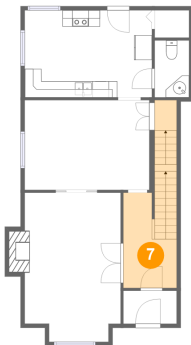
6 Floor 2 - Living Room



Dimensions: 11'8" x 18'2"
Area: 212 sq. ft
Counted as living area: Yes

Heated: Yes
Finished: Yes
Enclosed: Yes
Contiguous: Yes
Permitted: Yes
Wet space: No
Addition: No
Conversion: No

7 Floor 2 - Hall



Dimensions: 6'6" x 11'7"
Area: 104 sq. ft
Counted as living area: Yes

Heated: Yes
Finished: Yes
Enclosed: Yes
Contiguous: Yes
Permitted: Yes
Wet space: No
Addition: No
Conversion: No

8 Floor 3 - Bath

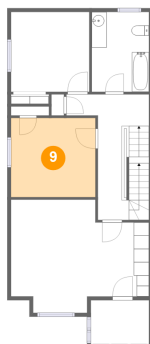


Dimensions: 7'8" x 10'9"
Area: 82 sq. ft
Counted as living area: Yes

Heated: Yes
Finished: Yes
Enclosed: Yes
Contiguous: Yes
Permitted: Yes
Wet space: Yes
Addition: No
Conversion: No

73 2 Ave, Glebe - Dows Lake, The Glebe, Ottawa,
Ontario, Canada, K1S 2H4, B

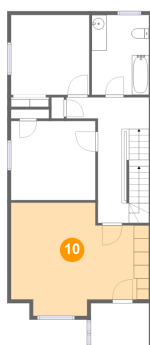
9 Floor 3 - Bedroom



Dimensions: 11'4" x 10'7"
Area: 120 sq. ft
Counted as living area: Yes

Heated: Yes
Finished: Yes
Enclosed: Yes
Contiguous: Yes
Permitted: Yes
Wet space: No
Addition: No
Conversion: No

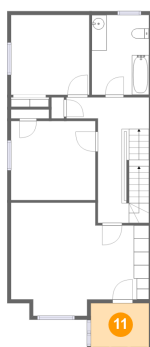
10 Floor 3 - Primary Bedroom



Dimensions: 18'6" x 15'2"
Area: 234 sq. ft
Counted as living area: Yes

Heated: Yes
Finished: Yes
Enclosed: Yes
Contiguous: Yes
Permitted: Yes
Wet space: No
Addition: No
Conversion: No

11 Floor 3 - Screened Balcony



Dimensions: 7'9" x 5'11"
Area: 46 sq. ft
Counted as living area: No

Heated: No
Finished: Yes
Enclosed: No
Contiguous: Yes
Permitted: Yes
Wet space: No
Addition: No
Conversion: No

73 2 Ave, Glebe - Dows Lake, The Glebe, Ottawa,
Ontario, Canada, K1S 2H4, B

12 Floor 3 - Hall



Dimensions: 11'1" x 16'10"
Area: 127 sq. ft
Counted as living area: Yes

Heated: Yes
Finished: Yes
Enclosed: Yes
Contiguous: Yes
Permitted: Yes
Wet space: No
Addition: No
Conversion: No

13 Floor 3 - Bedroom



Dimensions: 10'6" x 10'8"
Area: 112 sq. ft
Counted as living area: Yes

Heated: Yes
Finished: Yes
Enclosed: Yes
Contiguous: Yes
Permitted: Yes
Wet space: No
Addition: No
Conversion: No

14 Floor 4 - Room

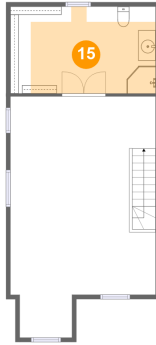


Dimensions: 16'8" x 27'9"
Area: 327 sq. ft
Counted as living area: Yes

Heated: Yes
Finished: Yes
Enclosed: Yes
Contiguous: Yes
Permitted: Yes
Wet space: No
Addition: No
Conversion: No

73 2 Ave, Glebe - Dows Lake, The Glebe, Ottawa,
Ontario, Canada, K1S 2H4, B

15 Floor 4 - Bath



Dimensions: 16'8" x 10'0"
Area: 121 sq. ft
Counted as living area: No

Heated: Yes
Finished: Yes
Enclosed: Yes
Contiguous: Yes
Permitted: Yes
Wet space: Yes
Addition: No
Conversion: No