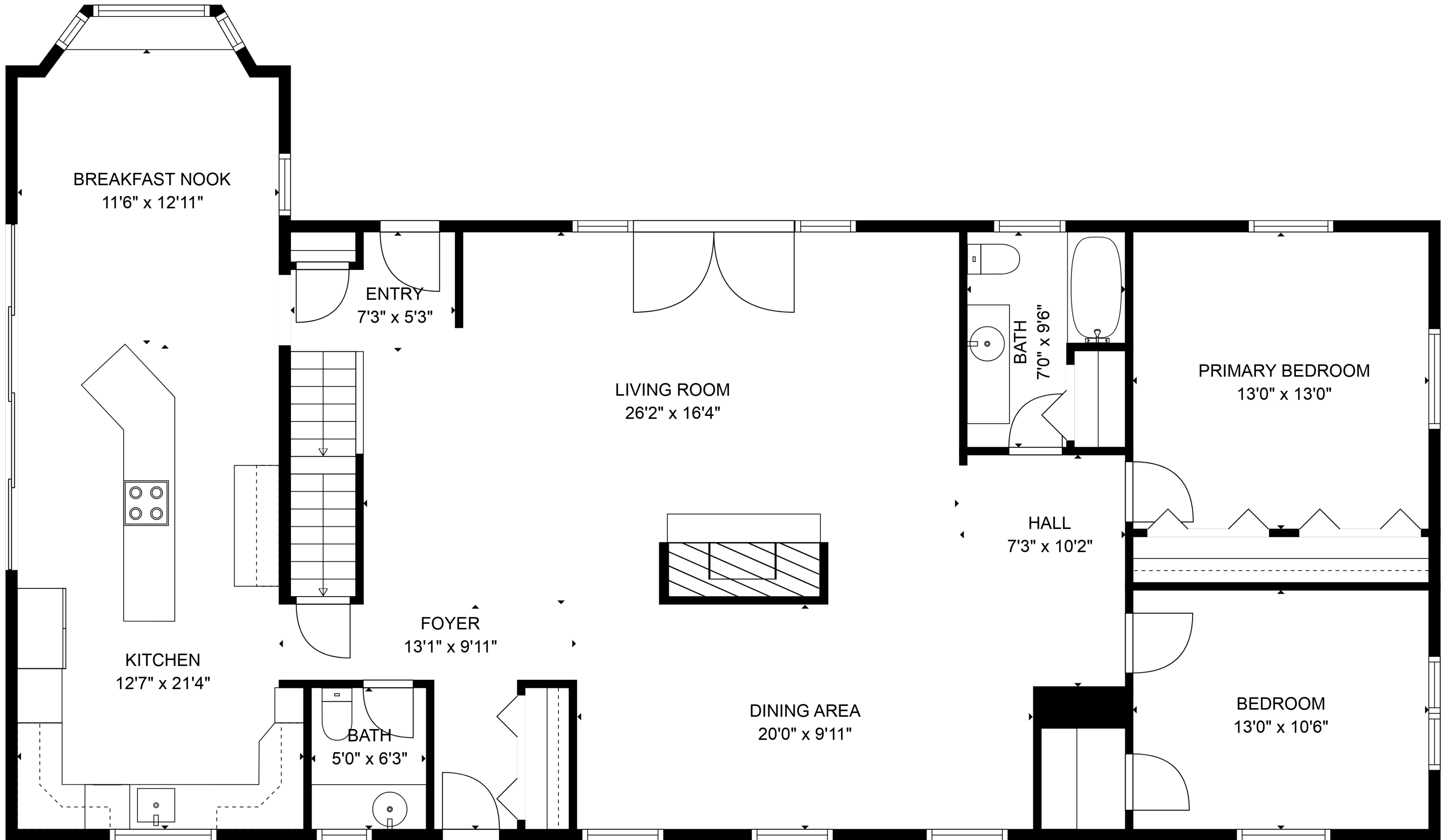


**TOTAL: 3660 sq. ft**

BELOW GROUND: 915 sq. ft, FLOOR 2: 1732 sq. ft, FLOOR 3: 1013 sq. ft  
 EXCLUDED AREAS: UTILITY: 655 sq. ft, LOW CEILING: 51 sq. ft, OPEN TO BELOW: 321 sq. ft



Floor Plans are provided by HouseSnappers.com. Measurements are deemed highly reliable but not guaranteed.

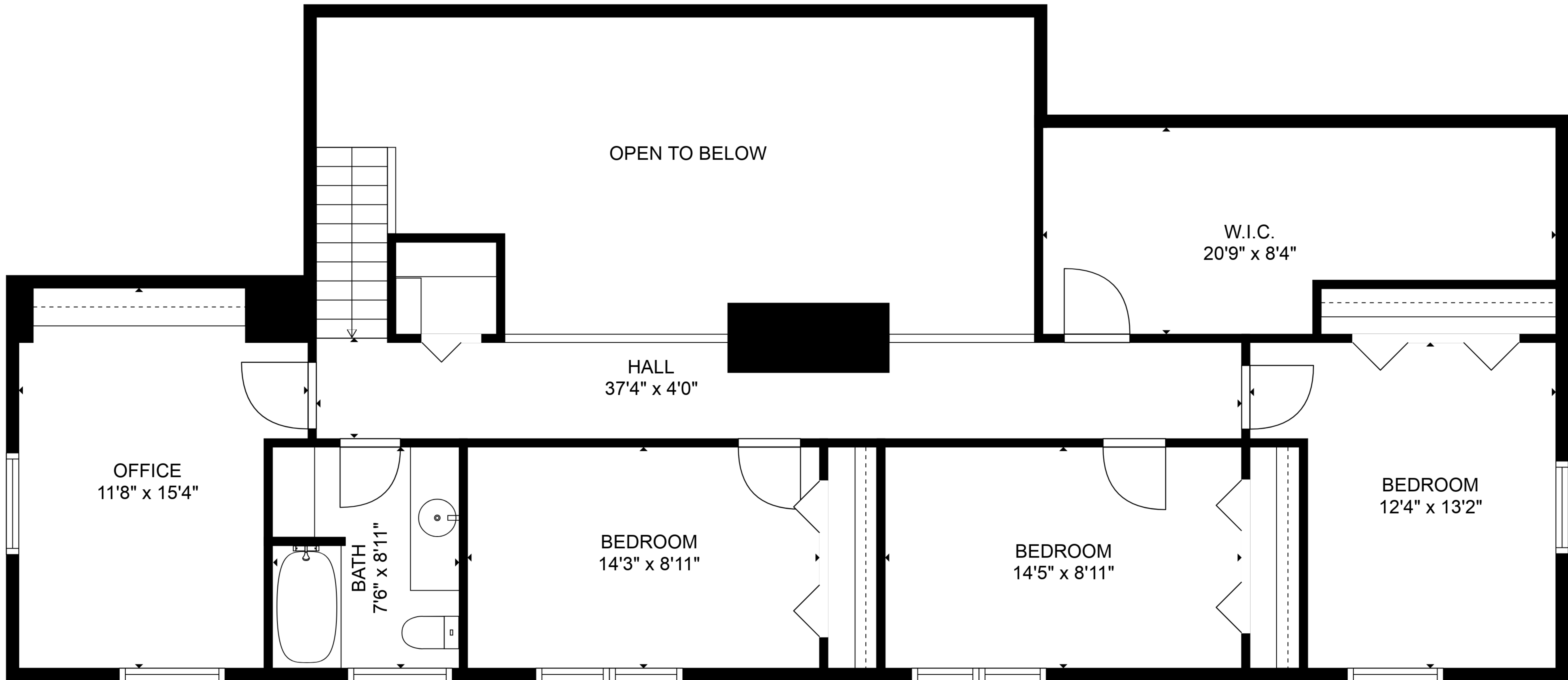


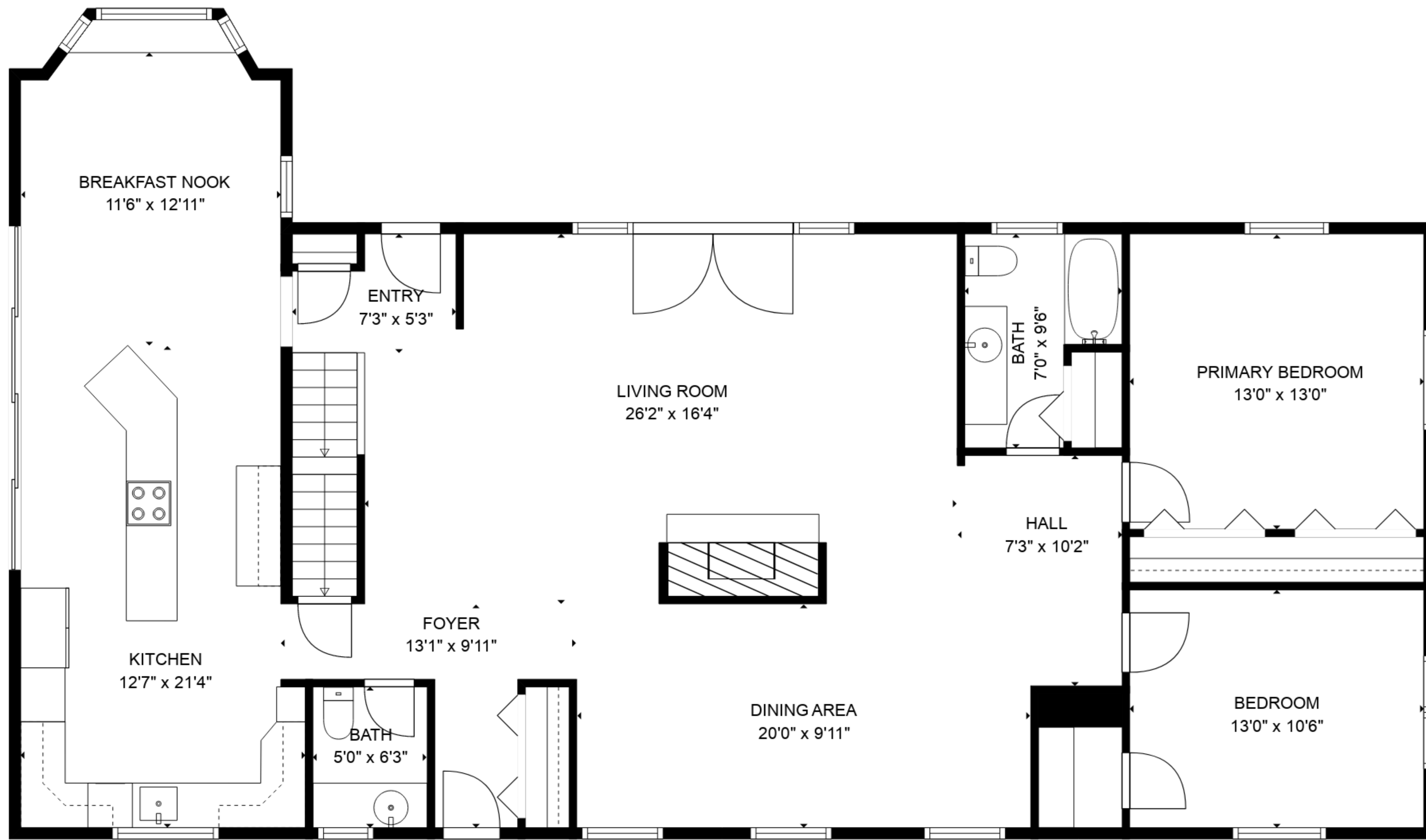
**TOTAL: 3660 sq. ft**

BELOW GROUND: 915 sq. ft, FLOOR 2: 1732 sq. ft, FLOOR 3: 1013 sq. ft  
 EXCLUDED AREAS: UTILITY: 655 sq. ft, LOW CEILING: 51 sq. ft, OPEN TO BELOW: 321 sq. ft

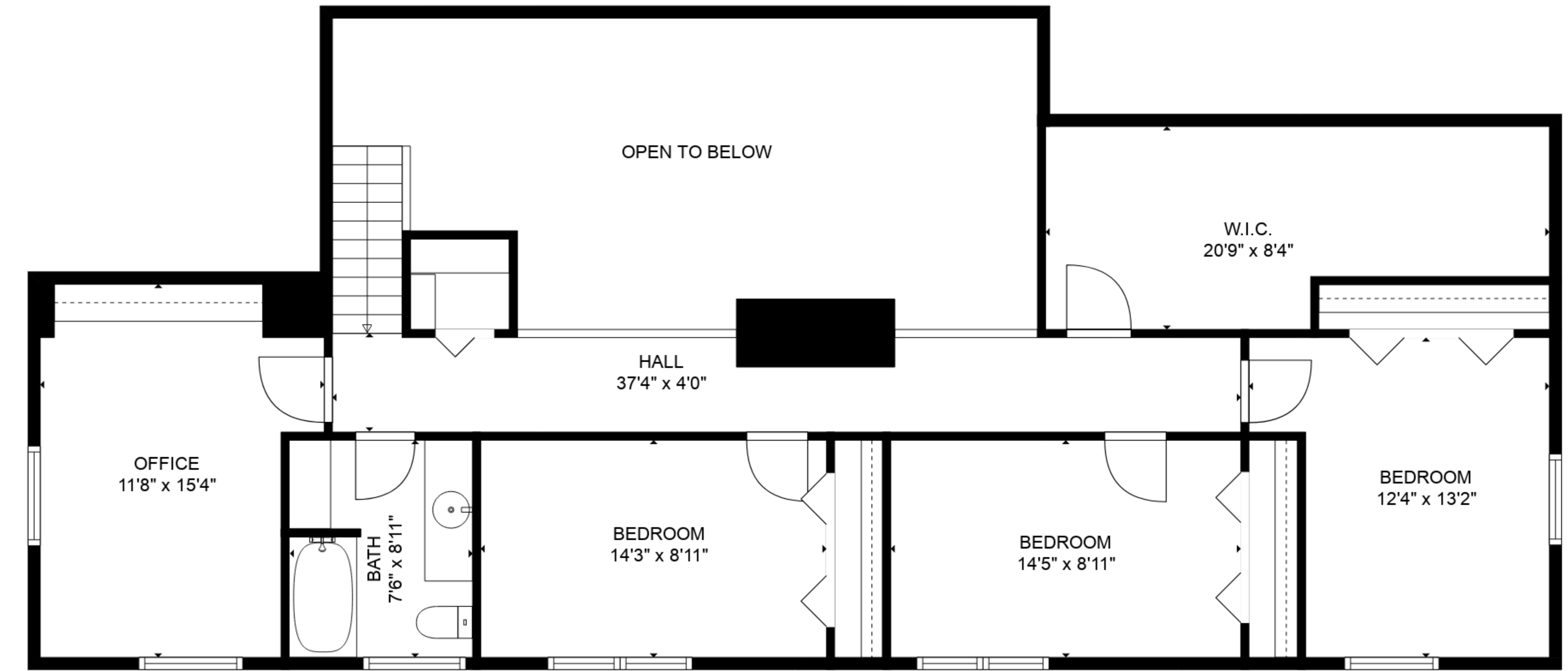


Floor Plans are provided by HouseSnappers.com. Measurements are deemed highly reliable but not guaranteed.

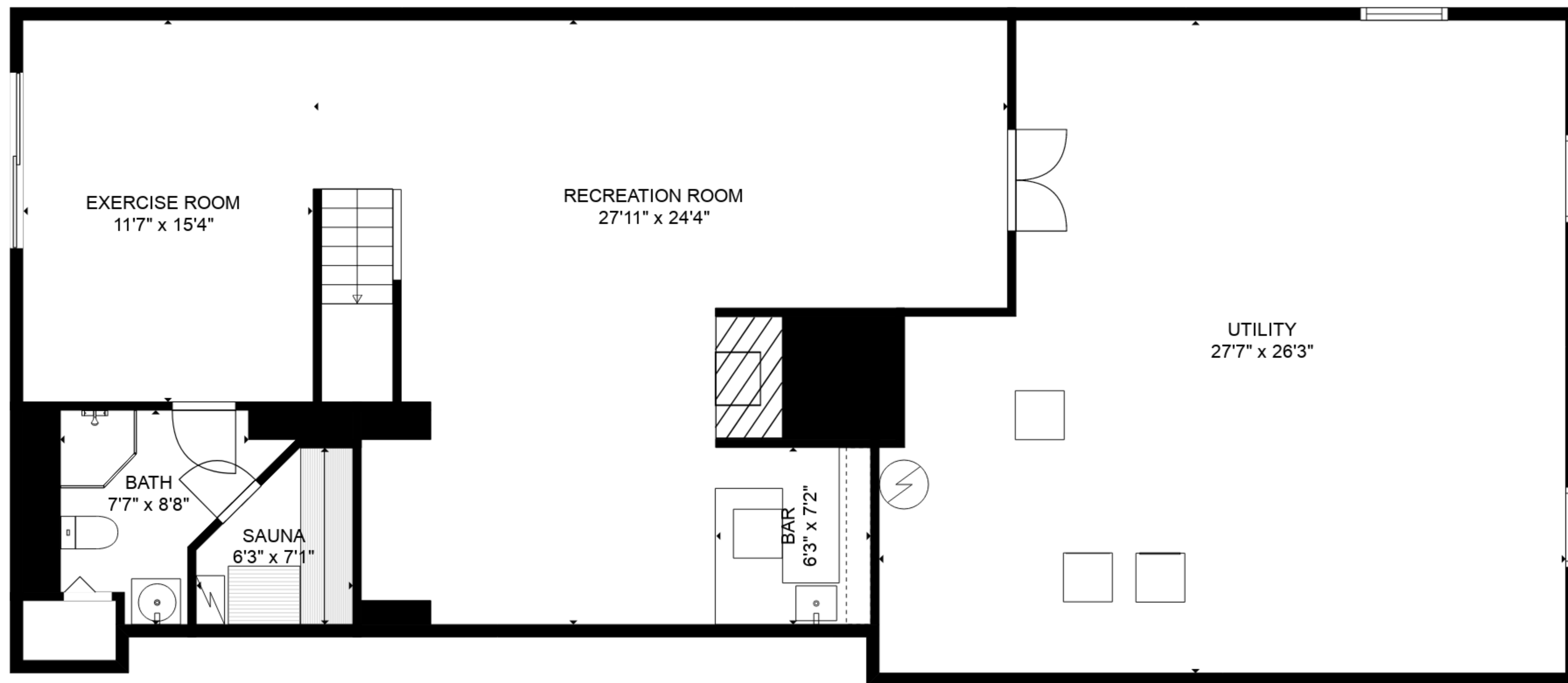




FLOOR 2



FLOOR 3



FLOOR 1

**TOTAL: 3660 sq. ft**

BELOW GROUND: 915 sq. ft, FLOOR 2: 1732 sq. ft, FLOOR 3: 1013 sq. ft  
 EXCLUDED AREAS: UTILITY: 655 sq. ft, LOW CEILING: 51 sq. ft, OPEN TO BELOW: 321 sq. ft



Floor Plans are provided by HouseSnappers.com. Measurements are deemed highly reliable but not guaranteed.