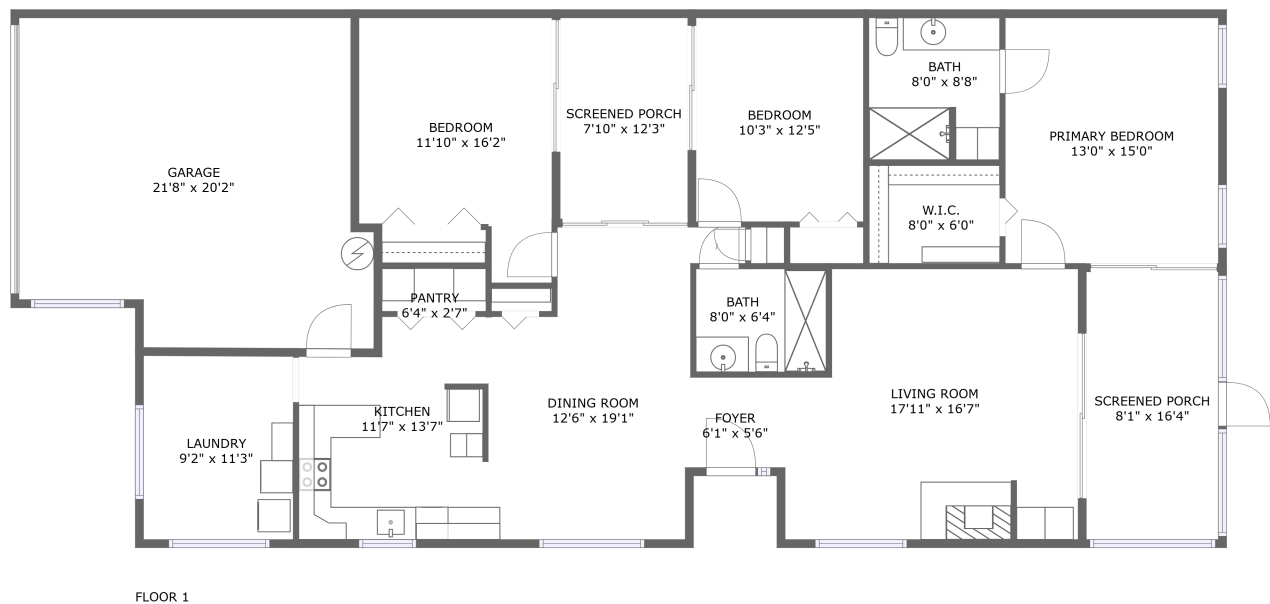


Home report

3671 Imperial Ridge Pkwy, Countryside Imperial, Palm Harbor,  
Pinellas County, Florida, United States, 34684




Total Area: 1644 sq. ft


Floor 1: 1644 sq. ft

Excluded: Outdoor Porch Screen 245 sq. ft, Garage 421 sq. ft

Property summary

 1 Floors

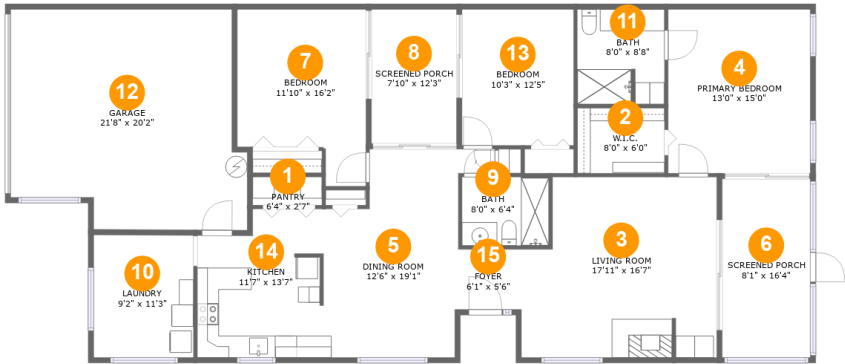
 3 Bedrooms

 2 Bathrooms

 1 Garages

Home report

3671 Imperial Ridge Pkwy, Countryside Imperial, Palm Harbor,  
Pinellas County, Florida, United States, 34684



Room dimensions

Floor 1 Total:1644sqft    Excluded: 666sqft

#		Max Dimensions	sqft	Included
1	Pantry	6'4" x 2'7"	17 sq. ft	Yes
2	W.I.C.	8'0" x 6'0"	48 sq. ft	Yes
3	Living Room	17'11" x 16'7"	276 sq. ft	Yes
4	Primary Bedroom	13'0" x 15'0"	196 sq. ft	Yes
5	Dining Room	12'6" x 19'1"	218 sq. ft	Yes
6	Screened Porch	8'1" x 16'4"	132 sq. ft	No
7	Bedroom	11'10" x 16'2"	162 sq. ft	Yes
8	Screened Porch	7'10" x 12'3"	96 sq. ft	No
9	Bath	8'0" x 6'4"	50 sq. ft	Yes
10	Laundry	9'2" x 11'3"	103 sq. ft	Yes
11	Bath	8'0" x 8'8"	68 sq. ft	Yes

## Home report

**3671 Imperial Ridge Pkwy, Countryside Imperial, Palm Harbor,  
Pinellas County, Florida, United States, 34684**

#		Max Dimensions	sqft	Included
12	Garage	21'8" x 20'2"	397 sq. ft	No
13	Bedroom	10'3" x 12'5"	128 sq. ft	Yes
14	Kitchen	11'7" x 13'7"	142 sq. ft	Yes
15	Foyer	6'1" x 5'6"	34 sq. ft	Yes

3671 Imperial Ridge Pkwy, Countryside Imperial, Palm Harbor,  
Pinellas County, Florida, United States, 34684

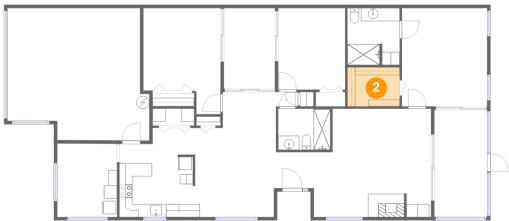
1 Floor 1 - Pantry



Max Dimensions: 6'4" x 2'7"  
Calculated Area: 17 sq. ft  
Included: Yes

Heated: Yes  
Finished: Yes  
Enclosed: Yes  
Contiguous: Yes  
Permitted: Yes  
Wet space: No  
Addition: No  
Conversion: No

2 Floor 1 - W.I.C.

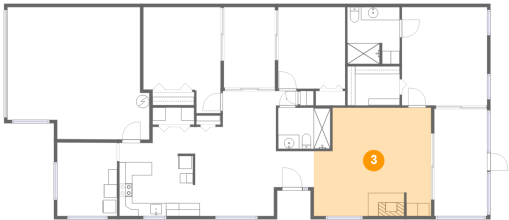


Max Dimensions: 8'0" x 6'0"  
Calculated Area: 48 sq. ft  
Included: Yes

Heated: Yes  
Finished: Yes  
Enclosed: Yes  
Contiguous: Yes  
Permitted: Yes  
Wet space: No  
Addition: No  
Conversion: No

3671 Imperial Ridge Pkwy, Countryside Imperial, Palm Harbor,  
Pinellas County, Florida, United States, 34684

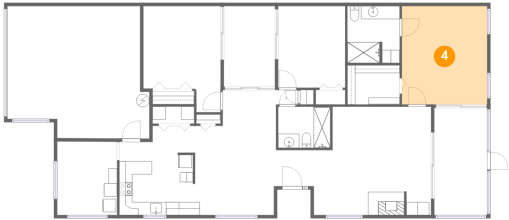
3 Floor 1 - Living Room



Max Dimensions: 17'11" x 16'7"  
Calculated Area: 276 sq. ft  
Included: Yes

Heated: Yes  
Finished: Yes  
Enclosed: Yes  
Contiguous: Yes  
Permitted: Yes  
Wet space: No  
Addition: No  
Conversion: No

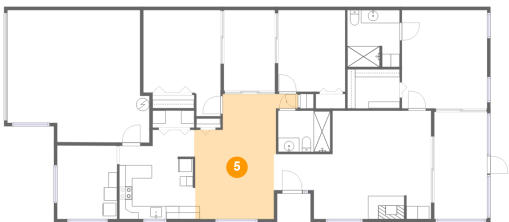
4 Floor 1 - Primary Bedroom



Max Dimensions: 13'0" x 15'0"  
Calculated Area: 196 sq. ft  
Included: Yes

Heated: Yes  
Finished: Yes  
Enclosed: Yes  
Contiguous: Yes  
Permitted: Yes  
Wet space: No  
Addition: No  
Conversion: No

5 Floor 1 - Dining Room



Max Dimensions: 12'6" x 19'1"  
Calculated Area: 218 sq. ft  
Included: Yes

Heated: Yes  
Finished: Yes  
Enclosed: Yes  
Contiguous: Yes  
Permitted: Yes  
Wet space: No  
Addition: No  
Conversion: No

3671 Imperial Ridge Pkwy, Countryside Imperial, Palm Harbor,  
Pinellas County, Florida, United States, 34684

6 Floor 1 - Screened Porch



Max Dimensions: 8'1" x 16'4"  
Calculated Area: 132 sq. ft  
Included: No

Heated: No  
Finished: Yes  
Enclosed: No  
Contiguous: Yes  
Permitted: Yes  
Wet space: No  
Addition: No  
Conversion: No

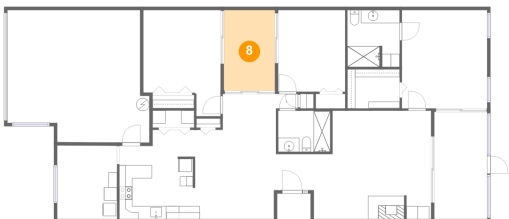
7 Floor 1 - Bedroom



Max Dimensions: 11'10" x 16'2"  
Calculated Area: 162 sq. ft  
Included: Yes

Heated: Yes  
Finished: Yes  
Enclosed: Yes  
Contiguous: Yes  
Permitted: Yes  
Wet space: No  
Addition: No  
Conversion: No

8 Floor 1 - Screened Porch



Max Dimensions: 7'10" x 12'3"  
Calculated Area: 96 sq. ft  
Included: No

Heated: No  
Finished: Yes  
Enclosed: No  
Contiguous: Yes  
Permitted: Yes  
Wet space: No  
Addition: No  
Conversion: No

3671 Imperial Ridge Pkwy, Countryside Imperial, Palm Harbor,  
Pinellas County, Florida, United States, 34684

## 9 Floor 1 - Bath



Max Dimensions: 8'0" x 6'4"  
Calculated Area: 50 sq. ft  
Included: Yes

Heated: Yes  
Finished: Yes  
Enclosed: Yes  
Contiguous: Yes  
Permitted: Yes  
Wet space: Yes  
Addition: No  
Conversion: No

## 10 Floor 1 - Laundry



Max Dimensions: 9'2" x 11'3"  
Calculated Area: 103 sq. ft  
Included: Yes

Heated: Yes  
Finished: Yes  
Enclosed: Yes  
Contiguous: Yes  
Permitted: Yes  
Wet space: No  
Addition: No  
Conversion: No

## 11 Floor 1 - Bath



Max Dimensions: 8'0" x 8'8"  
Calculated Area: 68 sq. ft  
Included: Yes

Heated: Yes  
Finished: Yes  
Enclosed: Yes  
Contiguous: Yes  
Permitted: Yes  
Wet space: Yes  
Addition: No  
Conversion: No

3671 Imperial Ridge Pkwy, Countryside Imperial, Palm Harbor,  
Pinellas County, Florida, United States, 34684

12 Floor 1 - Garage



Max Dimensions: 21'8" x 20'2"  
Calculated Area: 397 sq. ft  
Included: No

Heated: No  
Finished: No  
Enclosed: Yes  
Contiguous: Yes  
Permitted: Yes  
Wet space: No  
Addition: No  
Conversion: No

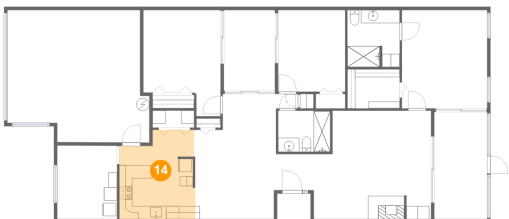
13 Floor 1 - Bedroom



Max Dimensions: 10'3" x 12'5"  
Calculated Area: 128 sq. ft  
Included: Yes

Heated: Yes  
Finished: Yes  
Enclosed: Yes  
Contiguous: Yes  
Permitted: Yes  
Wet space: No  
Addition: No  
Conversion: No

14 Floor 1 - Kitchen



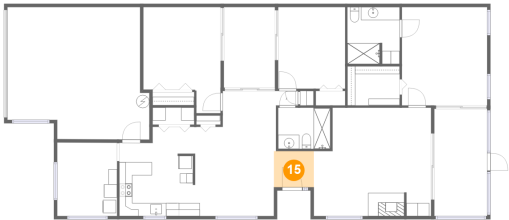
Max Dimensions: 11'7" x 13'7"  
Calculated Area: 142 sq. ft  
Included: Yes

Heated: Yes  
Finished: Yes  
Enclosed: Yes  
Contiguous: Yes  
Permitted: Yes  
Wet space: No  
Addition: No  
Conversion: No



3671 Imperial Ridge Pkwy, Countryside Imperial, Palm Harbor,  
Pinellas County, Florida, United States, 34684

15 Floor 1 - Foyer



Max Dimensions: 6'1" x 5'6"  
Calculated Area: 34 sq. ft  
Included: Yes

Heated: Yes  
Finished: Yes  
Enclosed: Yes  
Contiguous: Yes  
Permitted: Yes  
Wet space: No  
Addition: No  
Conversion: No