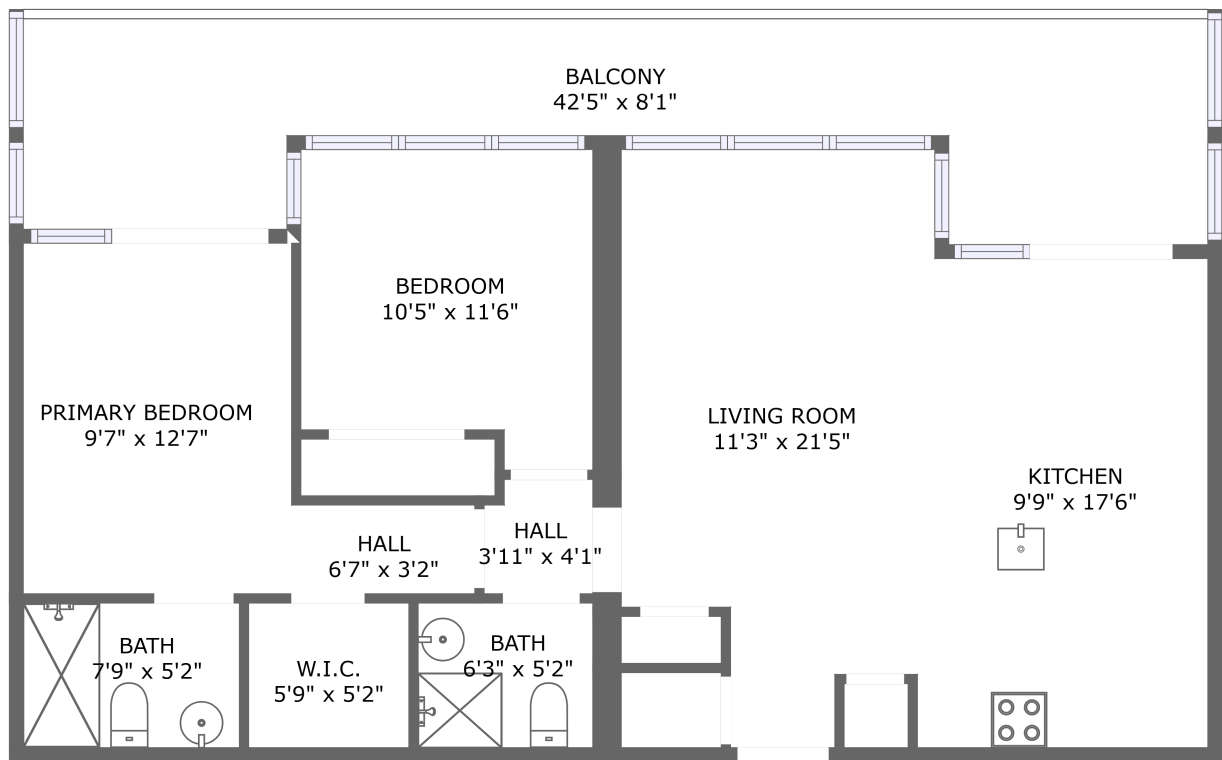


Home report

2750 King Street East, Gersholme, Hamilton, Ontario, Canada,
L8G 1J3, 704



FLOOR 1


Total Area: 910 sq. ft

Floor 1: 910 sq. ft

Excluded: Outdoor Balcony 245 sq. ft

Property summary

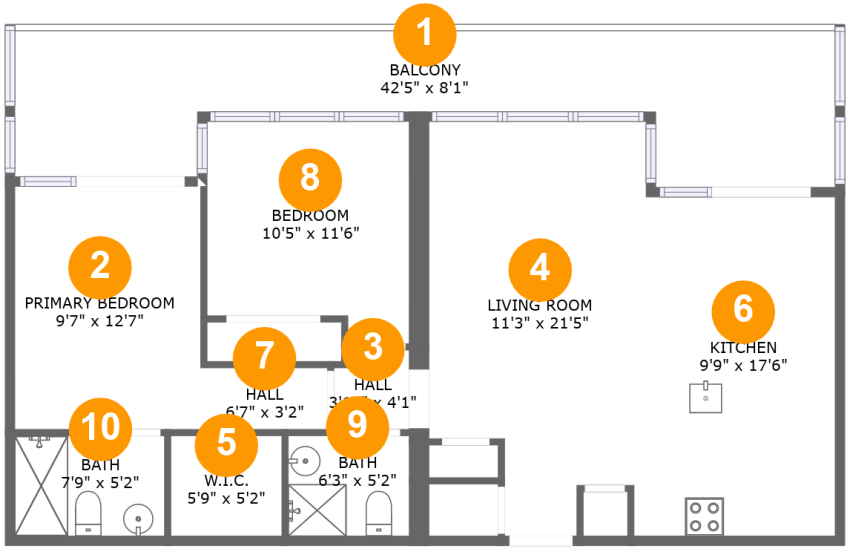
 **1** Floors

 **2** Bedrooms

 **2** Bathrooms

Home report

2750 King Street East, Gersholme, Hamilton, Ontario, Canada,
L8G 1J3, 704



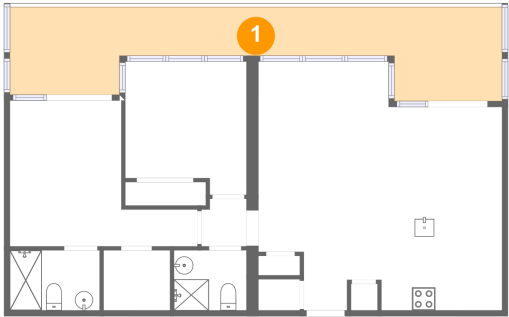
Room dimensions

Floor 1 Total:910sqft Excluded: 245sqft

#		Max Dimensions	sqft	Included
1	Balcony	42'5" x 8'1"	245 sq. ft	No
2	Primary Bedroom	9'7" x 12'7"	121 sq. ft	Yes
3	Hall	3'11" x 4'1"	15 sq. ft	Yes
4	Living Room	11'3" x 21'5"	213 sq. ft	Yes
5	W.I.C.	5'9" x 5'2"	30 sq. ft	Yes
6	Kitchen	9'9" x 17'6"	171 sq. ft	Yes
7	Hall	6'7" x 3'2"	21 sq. ft	Yes
8	Bedroom	10'5" x 11'6"	110 sq. ft	Yes
9	Bath	6'3" x 5'2"	32 sq. ft	Yes
10	Bath	7'9" x 5'2"	40 sq. ft	Yes

2750 King Street East, Gersholme, Hamilton, Ontario, Canada,
L8G 1J3, 704

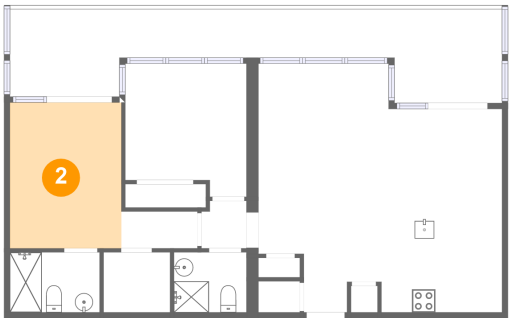
1 Floor 1 - Balcony



Max Dimensions: 42'5" x 8'1"
Calculated Area: 245 sq. ft
Included: No

Heated: No
Finished: Yes
Enclosed: No
Contiguous: Yes
Permitted: Yes
Wet space: No
Addition: No
Conversion: No

2 Floor 1 - Primary Bedroom



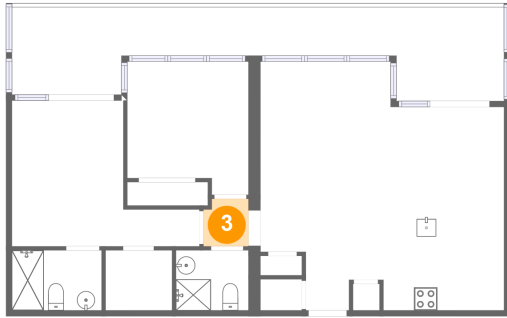
Max Dimensions: 9'7" x 12'7"
Calculated Area: 121 sq. ft
Included: Yes

Heated: Yes
Finished: Yes
Enclosed: Yes
Contiguous: Yes
Permitted: Yes
Wet space: No
Addition: No
Conversion: No

Home report

2750 King Street East, Gersholme, Hamilton, Ontario, Canada,
L8G 1J3, 704

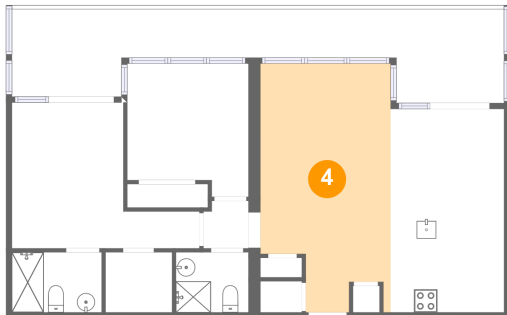
3 Floor 1 - Hall



Max Dimensions: 3'11" x 4'1"
Calculated Area: 15 sq. ft
Included: Yes

Heated: Yes
Finished: Yes
Enclosed: Yes
Contiguous: Yes
Permitted: Yes
Wet space: No
Addition: No
Conversion: No

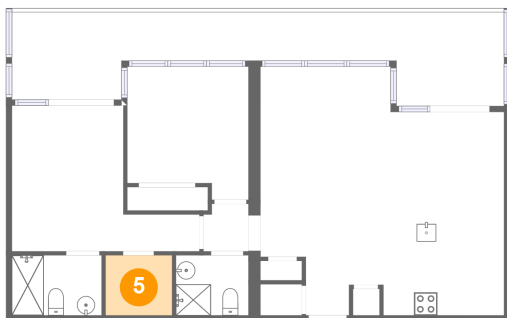
4 Floor 1 - Living Room



Max Dimensions: 11'3" x 21'5"
Calculated Area: 213 sq. ft
Included: Yes

Heated: Yes
Finished: Yes
Enclosed: Yes
Contiguous: Yes
Permitted: Yes
Wet space: No
Addition: No
Conversion: No

5 Floor 1 - W.I.C.



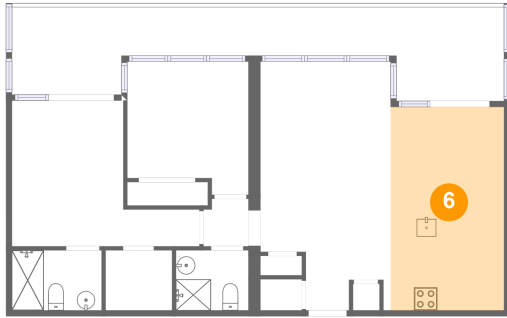
Max Dimensions: 5'9" x 5'2"
Calculated Area: 30 sq. ft
Included: Yes

Heated: Yes
Finished: Yes
Enclosed: Yes
Contiguous: Yes
Permitted: Yes
Wet space: No
Addition: No
Conversion: No

Home report

2750 King Street East, Gersholme, Hamilton, Ontario, Canada,
L8G 1J3, 704

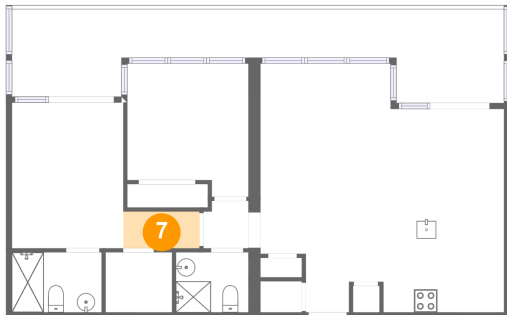
6 Floor 1 - Kitchen



Max Dimensions: 9'9" x 17'6"
Calculated Area: 171 sq. ft
Included: Yes

Heated: Yes
Finished: Yes
Enclosed: Yes
Contiguous: Yes
Permitted: Yes
Wet space: No
Addition: No
Conversion: No

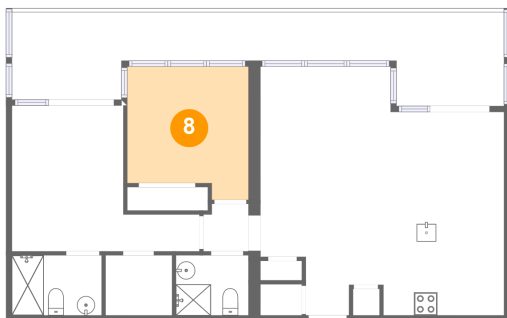
7 Floor 1 - Hall



Max Dimensions: 6'7" x 3'2"
Calculated Area: 21 sq. ft
Included: Yes

Heated: Yes
Finished: Yes
Enclosed: Yes
Contiguous: Yes
Permitted: Yes
Wet space: No
Addition: No
Conversion: No

8 Floor 1 - Bedroom

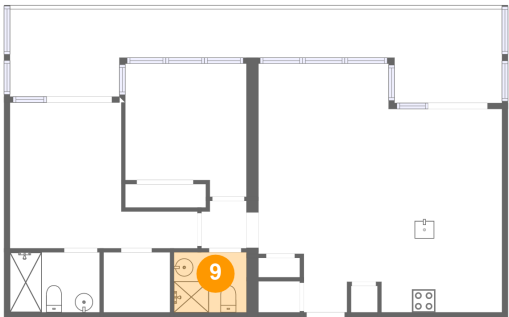


Max Dimensions: 10'5" x 11'6"
Calculated Area: 110 sq. ft
Included: Yes

Heated: Yes
Finished: Yes
Enclosed: Yes
Contiguous: Yes
Permitted: Yes
Wet space: No
Addition: No
Conversion: No

2750 King Street East, Gersholme, Hamilton, Ontario, Canada,
L8G 1J3, 704

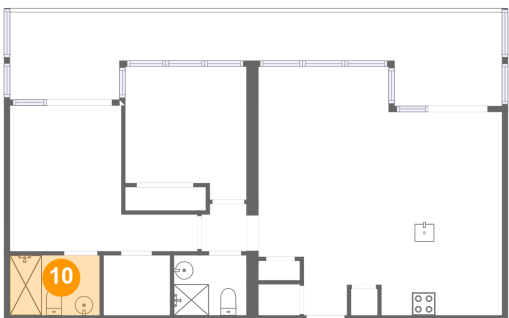
9 Floor 1 - Bath



Max Dimensions: 6'3" x 5'2"
Calculated Area: 32 sq. ft
Included: Yes

Heated: Yes
Finished: Yes
Enclosed: Yes
Contiguous: Yes
Permitted: Yes
Wet space: Yes
Addition: No
Conversion: No

10 Floor 1 - Bath



Max Dimensions: 7'9" x 5'2"
Calculated Area: 40 sq. ft
Included: Yes

Heated: Yes
Finished: Yes
Enclosed: Yes
Contiguous: Yes
Permitted: Yes
Wet space: Yes
Addition: No
Conversion: No