


# 591 Fleetwood Dr, Oshawa, ON, CA



## Property summary


 **1** Garages

 **4** Bedrooms

 **2** Bathrooms

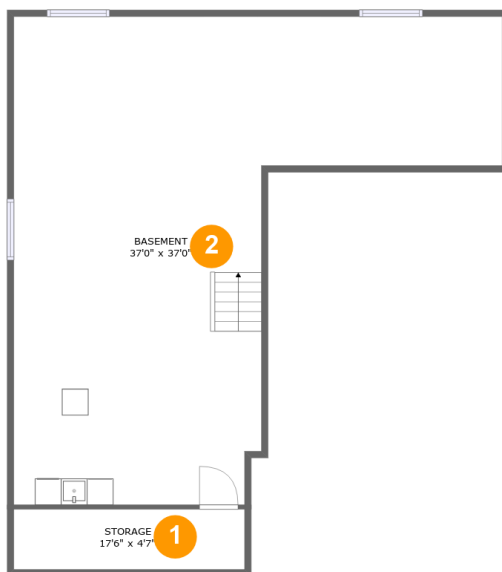
 **1** Half baths

 **3** Floors

 **2,240** Gross living area sqft

 **3,689** Total sqft

# 591 Fleetwood Dr, Oshawa, ON, CA



## Room dimensions

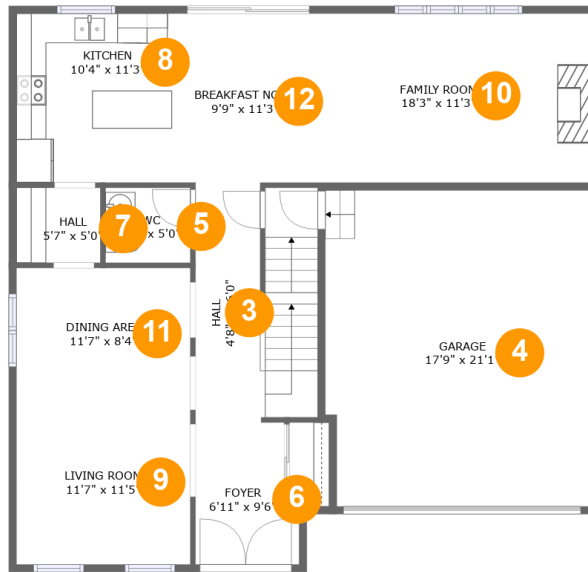
Floor 1

Total sqft: 1060

Living area: 0

#		Dimensions	sqft	Counted as living area
1	Storage	17'6" x 4'7"	80 sq. ft	No
2	Basement	37'0" x 37'0"	894 sq. ft	No

# 591 Fleetwood Dr, Oshawa, ON, CA



## Room dimensions

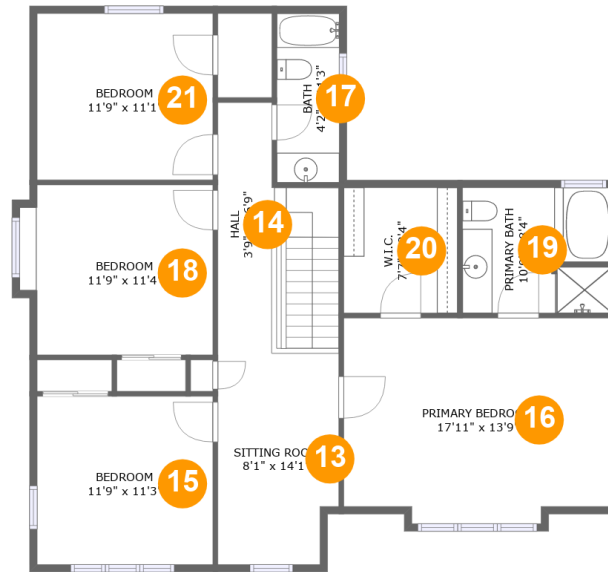
Floor 2

Total sqft: 1411

Living area: 1022

#		Dimensions	sqft	Counted as living area
3	Hall	4'8" x 16'0"	125 sq. ft	Yes
4	Garage	17'9" x 21'1"	370 sq. ft	No
5	Bath	5'8" x 5'0"	28 sq. ft	Yes
6	Entry	6'11" x 9'6"	60 sq. ft	Yes
7	Hall	5'7" x 5'0"	28 sq. ft	Yes
8	Kitchen	10'4" x 11'3"	117 sq. ft	Yes
9	Living Room	11'7" x 11'5"	133 sq. ft	Yes
10	Living Room	18'3" x 11'3"	206 sq. ft	Yes
11	Dining Room	11'7" x 8'4"	97 sq. ft	Yes
12	Nook	9'9" x 11'3"	110 sq. ft	Yes

# 591 Fleetwood Dr, Oshawa, ON, CA



## Room dimensions

Floor 3

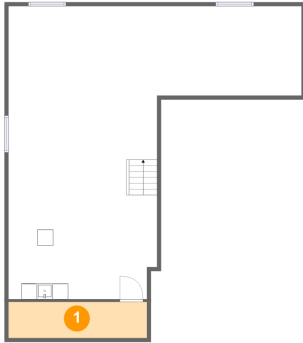
Total sqft: 1218

Living area: 1218

#		Dimensions	sqft	Counted as living area
13	Living Room	8'1" x 14'1"	109 sq. ft	Yes
14	Hall	3'9" x 16'9"	110 sq. ft	Yes
15	Bedroom	11'9" x 11'3"	132 sq. ft	Yes
16	Bedroom	17'11" x 13'9"	235 sq. ft	Yes
17	Bath	4'2" x 11'3"	47 sq. ft	Yes
18	Bedroom	11'9" x 11'4"	139 sq. ft	Yes
19	Bath	10'0" x 8'4"	82 sq. ft	Yes
20	Cl	7'7" x 8'4"	63 sq. ft	Yes
21	Bedroom	11'9" x 11'1"	130 sq. ft	Yes

# 591 Fleetwood Dr, Oshawa, ON, CA

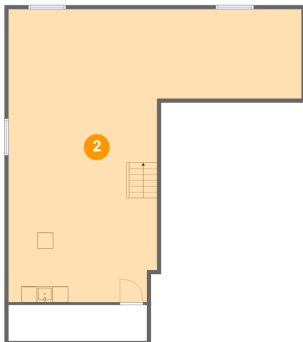
## 1 Floor 1 - Storage



Dimensions: 17'6" x 4'7"  
Area: 80 sq. ft  
Counted as living area: No

Heated: No  
Finished: No  
Enclosed: No  
Contiguous: Yes  
Permitted: Yes  
Wet space: No  
Addition: No  
Conversion: No

## 2 Floor 1 - Basement

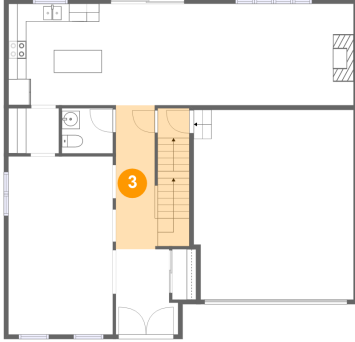


Dimensions: 37'0" x 37'0"  
Area: 894 sq. ft  
Counted as living area: No

Heated: Yes  
Finished: No  
Enclosed: Yes  
Contiguous: Yes  
Permitted: Yes  
Wet space: No  
Addition: No  
Conversion: No

# 591 Fleetwood Dr, Oshawa, ON, CA

## 3 Floor 2 - Hall



Dimensions: 4'8" x 16'0"  
Area: 125 sq. ft  
Counted as living area: Yes

Heated: Yes  
Finished: Yes  
Enclosed: Yes  
Contiguous: Yes  
Permitted: Yes  
Wet space: No  
Addition: No  
Conversion: No

## 4 Floor 2 - Garage



Dimensions: 17'9" x 21'1"  
Area: 370 sq. ft  
Counted as living area: No

Heated: No  
Finished: No  
Enclosed: Yes  
Contiguous: Yes  
Permitted: Yes  
Wet space: No  
Addition: No  
Conversion: No

## 5 Floor 2 - Bath



Dimensions: 5'8" x 5'0"  
Area: 28 sq. ft  
Counted as living area: Yes

Heated: Yes  
Finished: Yes  
Enclosed: Yes  
Contiguous: Yes  
Permitted: Yes  
Wet space: Yes  
Addition: No  
Conversion: No

# 591 Fleetwood Dr, Oshawa, ON, CA

## 6 Floor 2 - Entry



Dimensions: 6'11" x 9'6"  
Area: 60 sq. ft  
Counted as living area: Yes

Heated: Yes  
Finished: Yes  
Enclosed: Yes  
Contiguous: Yes  
Permitted: Yes  
Wet space: No  
Addition: No  
Conversion: No

## 7 Floor 2 - Hall



Dimensions: 5'7" x 5'0"  
Area: 28 sq. ft  
Counted as living area: Yes

Heated: Yes  
Finished: Yes  
Enclosed: Yes  
Contiguous: Yes  
Permitted: Yes  
Wet space: No  
Addition: No  
Conversion: No

## 8 Floor 2 - Kitchen

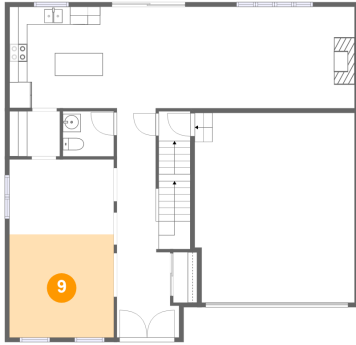


Dimensions: 10'4" x 11'3"  
Area: 117 sq. ft  
Counted as living area: Yes

Heated: Yes  
Finished: Yes  
Enclosed: Yes  
Contiguous: Yes  
Permitted: Yes  
Wet space: No  
Addition: No  
Conversion: No

# 591 Fleetwood Dr, Oshawa, ON, CA

## 9 Floor 2 - Living Room



Dimensions: 11'7" x 11'5"  
Area: 133 sq. ft  
Counted as living area: Yes

Heated: Yes  
Finished: Yes  
Enclosed: Yes  
Contiguous: Yes  
Permitted: Yes  
Wet space: No  
Addition: No  
Conversion: No

## 10 Floor 2 - Living Room



Dimensions: 18'3" x 11'3"  
Area: 206 sq. ft  
Counted as living area: Yes

Heated: Yes  
Finished: Yes  
Enclosed: Yes  
Contiguous: Yes  
Permitted: Yes  
Wet space: No  
Addition: No  
Conversion: No

## 11 Floor 2 - Dining Room



Dimensions: 11'7" x 8'4"  
Area: 97 sq. ft  
Counted as living area: Yes

Heated: Yes  
Finished: Yes  
Enclosed: Yes  
Contiguous: Yes  
Permitted: Yes  
Wet space: No  
Addition: No  
Conversion: No



# 591 Fleetwood Dr, Oshawa, ON, CA

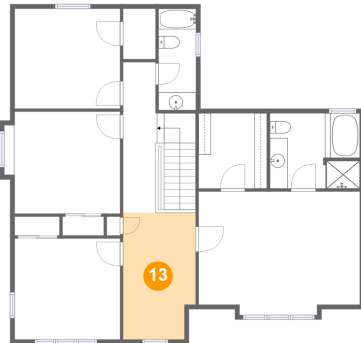
## 12 Floor 2 - Nook



Dimensions: 9'9" x 11'3"  
Area: 110 sq. ft  
Counted as living area: Yes

Heated: Yes  
Finished: Yes  
Enclosed: Yes  
Contiguous: Yes  
Permitted: Yes  
Wet space: No  
Addition: No  
Conversion: No

## 13 Floor 3 - Living Room



Dimensions: 8'1" x 14'1"  
Area: 109 sq. ft  
Counted as living area: Yes

Heated: Yes  
Finished: Yes  
Enclosed: Yes  
Contiguous: Yes  
Permitted: Yes  
Wet space: No  
Addition: No  
Conversion: No

## 14 Floor 3 - Hall

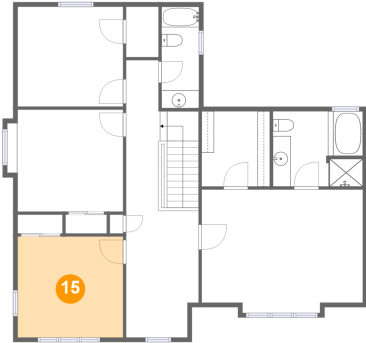


Dimensions: 3'9" x 16'9"  
Area: 110 sq. ft  
Counted as living area: Yes

Heated: Yes  
Finished: Yes  
Enclosed: Yes  
Contiguous: Yes  
Permitted: Yes  
Wet space: No  
Addition: No  
Conversion: No

# 591 Fleetwood Dr, Oshawa, ON, CA

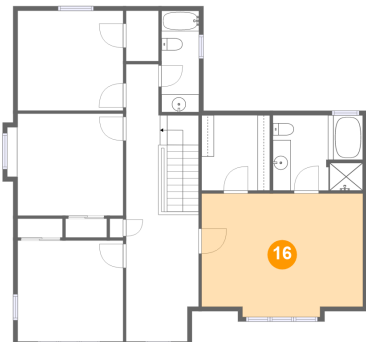
## 15 Floor 3 - Bedroom



Dimensions: 11'9" x 11'3"  
Area: 132 sq. ft  
Counted as living area: Yes

Heated: Yes  
Finished: Yes  
Enclosed: Yes  
Contiguous: Yes  
Permitted: Yes  
Wet space: No  
Addition: No  
Conversion: No

## 16 Floor 3 - Bedroom



Dimensions: 17'11" x 13'9"  
Area: 235 sq. ft  
Counted as living area: Yes

Heated: Yes  
Finished: Yes  
Enclosed: Yes  
Contiguous: Yes  
Permitted: Yes  
Wet space: No  
Addition: No  
Conversion: No

## 17 Floor 3 - Bath

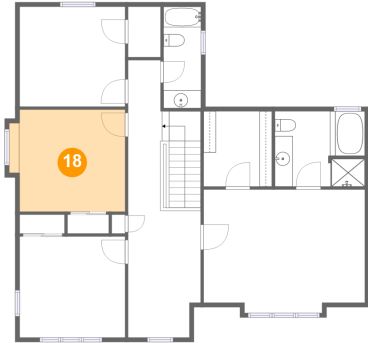


Dimensions: 4'2" x 11'3"  
Area: 47 sq. ft  
Counted as living area: Yes

Heated: Yes  
Finished: Yes  
Enclosed: Yes  
Contiguous: Yes  
Permitted: Yes  
Wet space: Yes  
Addition: No  
Conversion: No

# 591 Fleetwood Dr, Oshawa, ON, CA

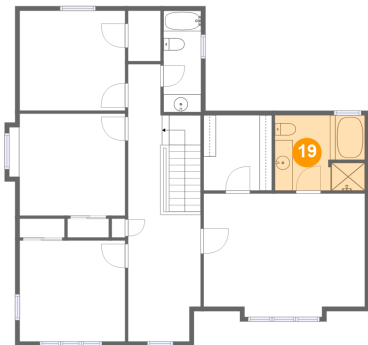
## 18 Floor 3 - Bedroom



Dimensions: 11'9" x 11'4"  
Area: 139 sq. ft  
Counted as living area: Yes

Heated: Yes  
Finished: Yes  
Enclosed: Yes  
Contiguous: Yes  
Permitted: Yes  
Wet space: No  
Addition: No  
Conversion: No

## 19 Floor 3 - Bath



Dimensions: 10'0" x 8'4"  
Area: 82 sq. ft  
Counted as living area: Yes

Heated: Yes  
Finished: Yes  
Enclosed: Yes  
Contiguous: Yes  
Permitted: Yes  
Wet space: Yes  
Addition: No  
Conversion: No

## 20 Floor 3 - Cl

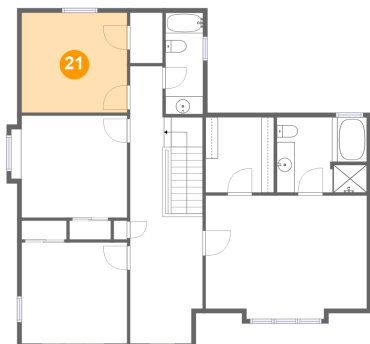


Dimensions: 7'7" x 8'4"  
Area: 63 sq. ft  
Counted as living area: Yes

Heated: Yes  
Finished: Yes  
Enclosed: Yes  
Contiguous: Yes  
Permitted: Yes  
Wet space: No  
Addition: No  
Conversion: No

## 591 Fleetwood Dr, Oshawa, ON, CA

### 21 Floor 3 - Bedroom



**Dimensions:** 11'9" x 11'1"  
**Area:** 130 sq. ft  
**Counted as living area:** Yes

**Heated:** Yes  
**Finished:** Yes  
**Enclosed:** Yes  
**Contiguous:** Yes  
**Permitted:** Yes  
**Wet space:** No  
**Addition:** No  
**Conversion:** No