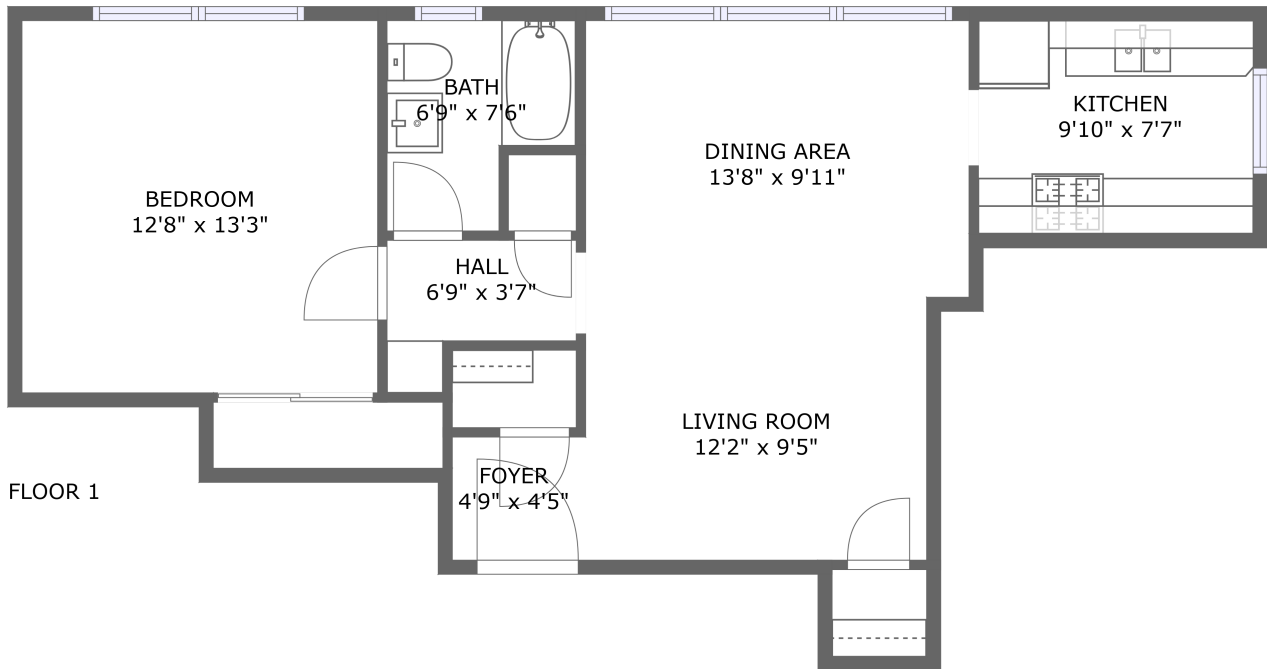


2551 8th Ave #2, Los Angeles, CA, US



Property summary


 **0** Garages


 **1** Bedrooms

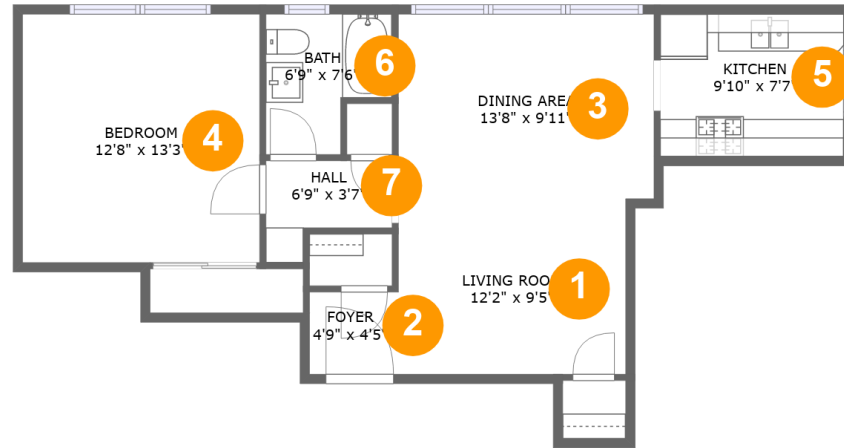
 **1** Bathrooms

 **0** Half baths

 **1** Floors

 **657**
Gross living
area sqft

 **657**
Total sqft

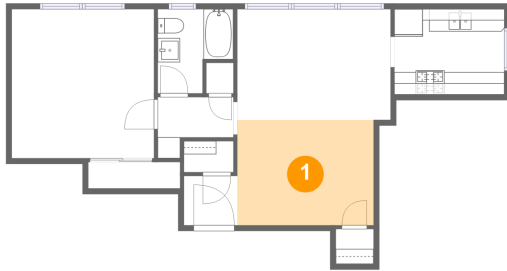
2551 8th Ave #2, Los Angeles, CA, US**Room dimensions**

Floor 1

Total sqft: 657 Living area: 657

#		Dimensions	sqft	Counted as living area
1	Living Room	12'2" x 9'5"	114 sq. ft	Yes
2	Entry	4'9" x 4'5"	21 sq. ft	Yes
3	Dining Room	13'8" x 9'11"	135 sq. ft	Yes
4	Bedroom	12'8" x 13'3"	169 sq. ft	Yes
5	Kitchen	9'10" x 7'7"	75 sq. ft	Yes
6	Bath	6'9" x 7'6"	42 sq. ft	Yes
7	Hall	6'9" x 3'7"	28 sq. ft	Yes

1 Floor 1 - Living Room



Dimensions: 12'2" x 9'5"
Area: 114 sq. ft
Counted as living area: Yes

Heated: Yes
Finished: Yes
Enclosed: Yes
Contiguous: Yes
Permitted: Yes
Wet space: No
Addition: No
Conversion: No

2 Floor 1 - Entry



Dimensions: 4'9" x 4'5"
Area: 21 sq. ft
Counted as living area: Yes

Heated: Yes
Finished: Yes
Enclosed: Yes
Contiguous: Yes
Permitted: Yes
Wet space: No
Addition: No
Conversion: No

2551 8th Ave #2, Los Angeles, CA, US

3 Floor 1 - Dining Room



Dimensions: 13'8" x 9'11"
Area: 135 sq. ft
Counted as living area: Yes

Heated: Yes
Finished: Yes
Enclosed: Yes
Contiguous: Yes
Permitted: Yes
Wet space: No
Addition: No
Conversion: No

4 Floor 1 - Bedroom



Dimensions: 12'8" x 13'3"
Area: 169 sq. ft
Counted as living area: Yes

Heated: Yes
Finished: Yes
Enclosed: Yes
Contiguous: Yes
Permitted: Yes
Wet space: No
Addition: No
Conversion: No

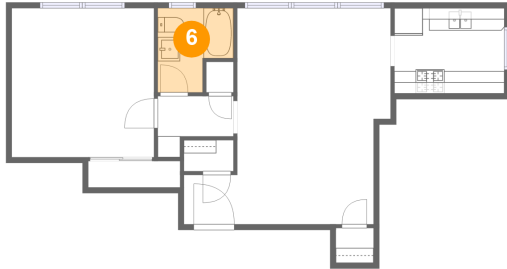
5 Floor 1 - Kitchen



Dimensions: 9'10" x 7'7"
Area: 75 sq. ft
Counted as living area: Yes

Heated: Yes
Finished: Yes
Enclosed: Yes
Contiguous: Yes
Permitted: Yes
Wet space: No
Addition: No
Conversion: No

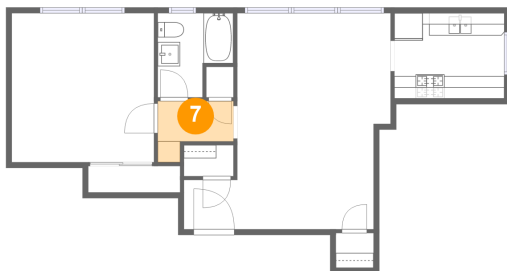
6 Floor 1 - Bath



Dimensions: 6'9" x 7'6"
Area: 42 sq. ft
Counted as living area: Yes

Heated: Yes
Finished: Yes
Enclosed: Yes
Contiguous: Yes
Permitted: Yes
Wet space: Yes
Addition: No
Conversion: No

7 Floor 1 - Hall



Dimensions: 6'9" x 3'7"
Area: 28 sq. ft
Counted as living area: Yes

Heated: Yes
Finished: Yes
Enclosed: Yes
Contiguous: Yes
Permitted: Yes
Wet space: No
Addition: No
Conversion: No