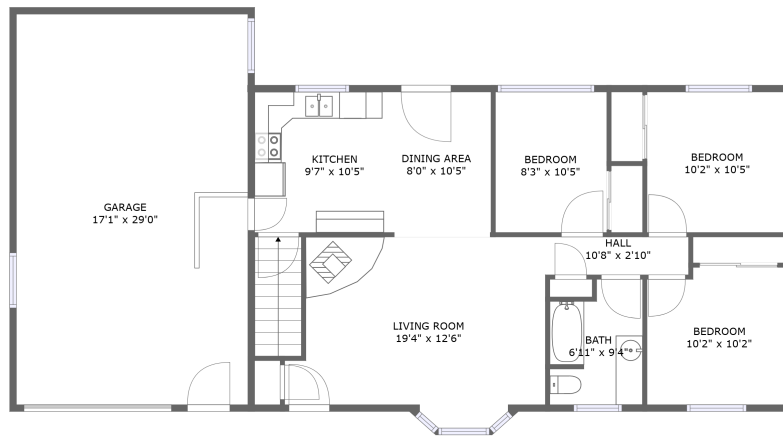
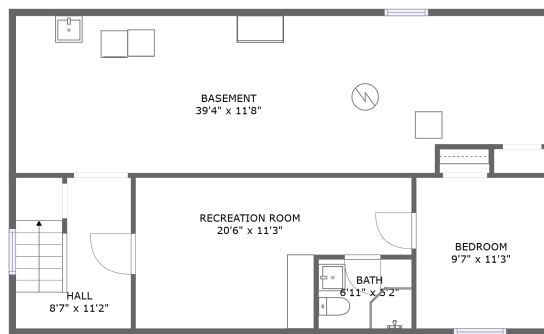


823 Verdale Dr, Spearfish, SD, US




FLOOR 2



FLOOR 1

Property summary


 **1** Garages


 **4** Bedrooms

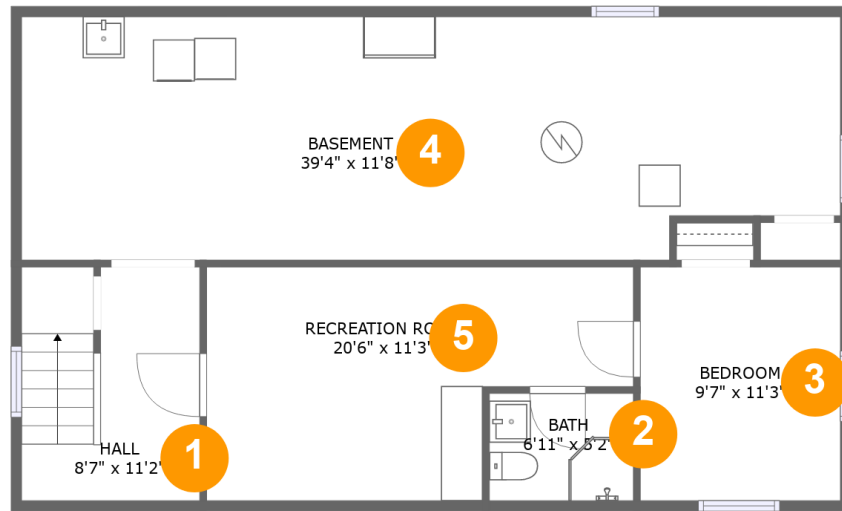
 **2** Bathrooms

 **0** Half baths

 **2** Floors

 **1,472** Gross living area sqft

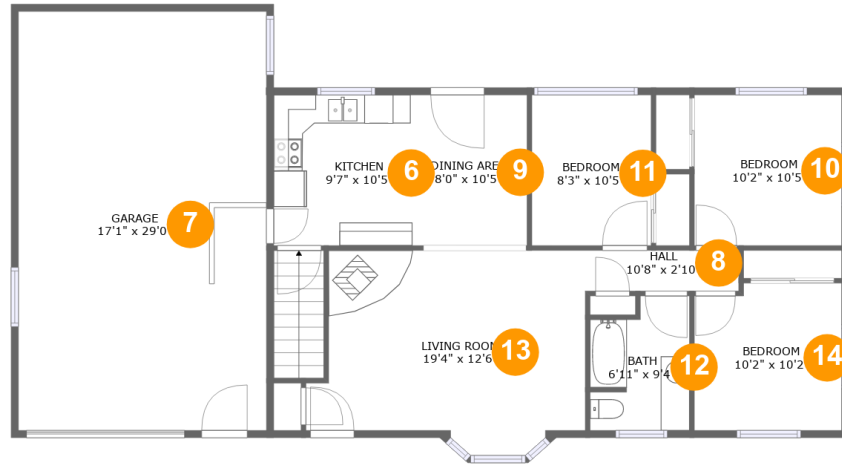
 **2,498** Total sqft

823 Verdale Dr, Spearfish, SD, US**Room dimensions**

Floor 1

Total sqft: 977 Living area: 495

#		Dimensions	sqft	Counted as living area
1	Hall	8'7" x 11'2"	95 sq. ft	Yes
2	Bath	6'11" x 5'2"	36 sq. ft	Yes
3	Bedroom	9'7" x 11'3"	108 sq. ft	Yes
4	Basement	39'4" x 11'8"	442 sq. ft	No
5	Recreation Room	20'6" x 11'3"	190 sq. ft	Yes

823 Verdale Dr, Spearfish, SD, US**Room dimensions**

Floor 2

Total sqft: 1521

Living area: 977

#		Dimensions	sqft	Counted as living area
6	Kitchen	9'7" x 10'5"	100 sq. ft	Yes
7	Garage	17'1" x 29'0"	498 sq. ft	No
8	Hall	10'8" x 2'10"	30 sq. ft	Yes
9	Dining Area	8'0" x 10'5"	83 sq. ft	Yes
10	Bedroom	10'2" x 10'5"	106 sq. ft	Yes
11	Bedroom	8'3" x 10'5"	86 sq. ft	Yes
12	Bath	6'11" x 9'4"	58 sq. ft	Yes
13	Living Room	19'4" x 12'6"	227 sq. ft	Yes
14	Bedroom	10'2" x 10'2"	101 sq. ft	Yes

823 Verdale Dr, Spearfish, SD, US

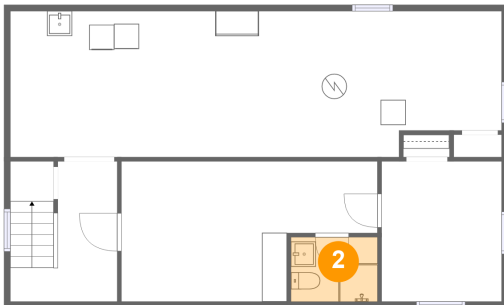
1 Floor 1 - Hall



Dimensions: 8'7" x 11'2"
Area: 95 sq. ft
Counted as living area: Yes

Heated: Yes
Finished: Yes
Enclosed: Yes
Contiguous: Yes
Permitted: Yes
Wet space: No
Addition: No
Conversion: No

2 Floor 1 - Bath



Dimensions: 6'11" x 5'2"
Area: 36 sq. ft
Counted as living area: Yes

Heated: Yes
Finished: Yes
Enclosed: Yes
Contiguous: Yes
Permitted: Yes
Wet space: Yes
Addition: No
Conversion: No

823 Verdale Dr, Spearfish, SD, US

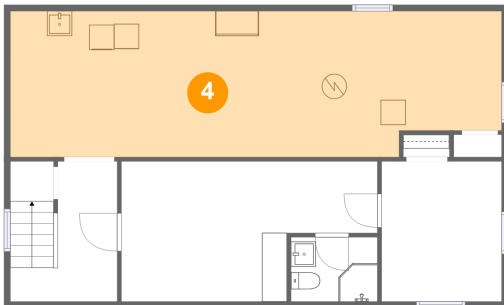
3 Floor 1 - Bedroom



Dimensions: 9'7" x 11'3"
Area: 108 sq. ft
Counted as living area: Yes

Heated: Yes
Finished: Yes
Enclosed: Yes
Contiguous: Yes
Permitted: Yes
Wet space: No
Addition: No
Conversion: No

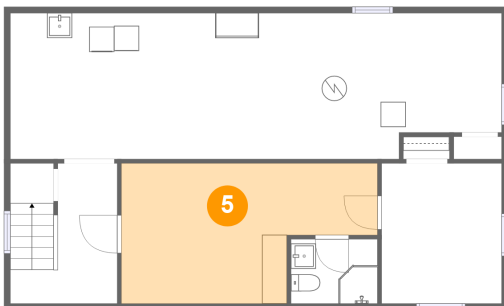
4 Floor 1 - Basement



Dimensions: 39'4" x 11'8"
Area: 442 sq. ft
Counted as living area: No

Heated: Yes
Finished: No
Enclosed: Yes
Contiguous: Yes
Permitted: Yes
Wet space: No
Addition: No
Conversion: No

5 Floor 1 - Recreation Room

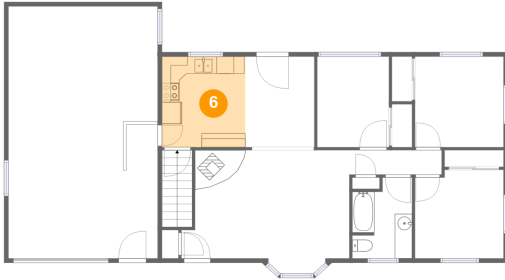


Dimensions: 20'6" x 11'3"
Area: 190 sq. ft
Counted as living area: Yes

Heated: Yes
Finished: Yes
Enclosed: Yes
Contiguous: Yes
Permitted: Yes
Wet space: No
Addition: No
Conversion: No

823 Verdale Dr, Spearfish, SD, US

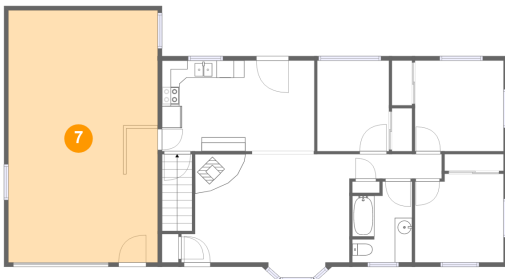
6 Floor 2 - Kitchen



Dimensions: 9'7" x 10'5"
Area: 100 sq. ft
Counted as living area: Yes

Heated: Yes
Finished: Yes
Enclosed: Yes
Contiguous: Yes
Permitted: Yes
Wet space: No
Addition: No
Conversion: No

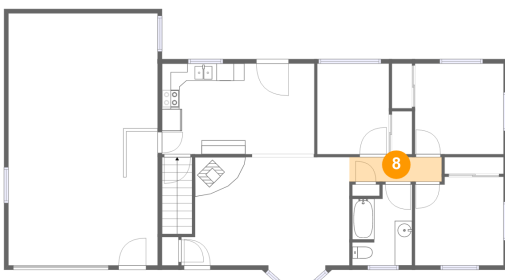
7 Floor 2 - Garage



Dimensions: 17'1" x 29'0"
Area: 498 sq. ft
Counted as living area: No

Heated: No
Finished: No
Enclosed: Yes
Contiguous: Yes
Permitted: Yes
Wet space: No
Addition: No
Conversion: No

8 Floor 2 - Hall

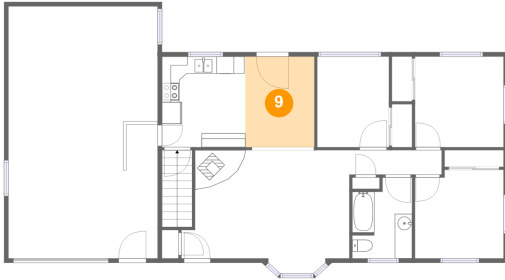


Dimensions: 10'8" x 2'10"
Area: 30 sq. ft
Counted as living area: Yes

Heated: Yes
Finished: Yes
Enclosed: Yes
Contiguous: Yes
Permitted: Yes
Wet space: No
Addition: No
Conversion: No

823 Verdale Dr, Spearfish, SD, US

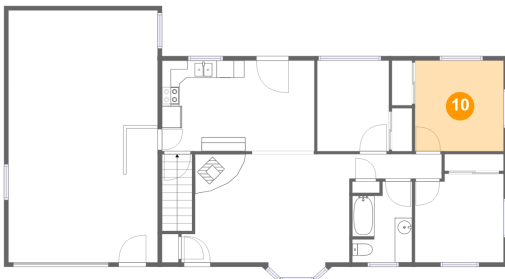
9 Floor 2 - Dining Area



Dimensions: 8'0" x 10'5"
Area: 83 sq. ft
Counted as living area: Yes

Heated: Yes
Finished: Yes
Enclosed: Yes
Contiguous: Yes
Permitted: Yes
Wet space: No
Addition: No
Conversion: No

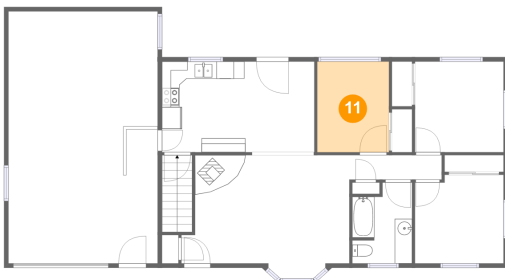
10 Floor 2 - Bedroom



Dimensions: 10'2" x 10'5"
Area: 106 sq. ft
Counted as living area: Yes

Heated: Yes
Finished: Yes
Enclosed: Yes
Contiguous: Yes
Permitted: Yes
Wet space: No
Addition: No
Conversion: No

11 Floor 2 - Bedroom

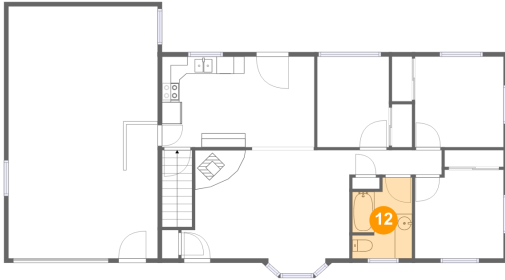


Dimensions: 8'3" x 10'5"
Area: 86 sq. ft
Counted as living area: Yes

Heated: Yes
Finished: Yes
Enclosed: Yes
Contiguous: Yes
Permitted: Yes
Wet space: No
Addition: No
Conversion: No

823 Verdale Dr, Spearfish, SD, US

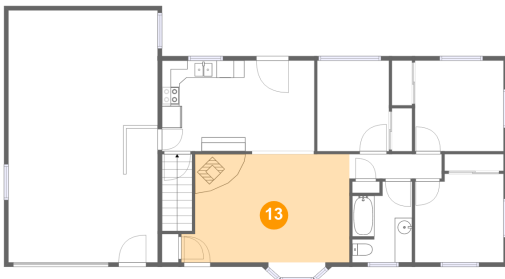
12 Floor 2 - Bath



Dimensions: 6'11" x 9'4"
Area: 58 sq. ft
Counted as living area: Yes

Heated: Yes
Finished: Yes
Enclosed: Yes
Contiguous: Yes
Permitted: Yes
Wet space: Yes
Addition: No
Conversion: No

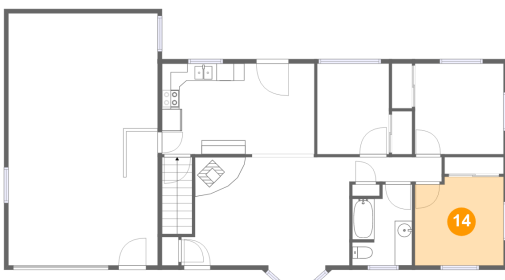
13 Floor 2 - Living Room



Dimensions: 19'4" x 12'6"
Area: 227 sq. ft
Counted as living area: Yes

Heated: Yes
Finished: Yes
Enclosed: Yes
Contiguous: Yes
Permitted: Yes
Wet space: No
Addition: No
Conversion: No

14 Floor 2 - Bedroom



Dimensions: 10'2" x 10'2"
Area: 101 sq. ft
Counted as living area: Yes

Heated: Yes
Finished: Yes
Enclosed: Yes
Contiguous: Yes
Permitted: Yes
Wet space: No
Addition: No
Conversion: No