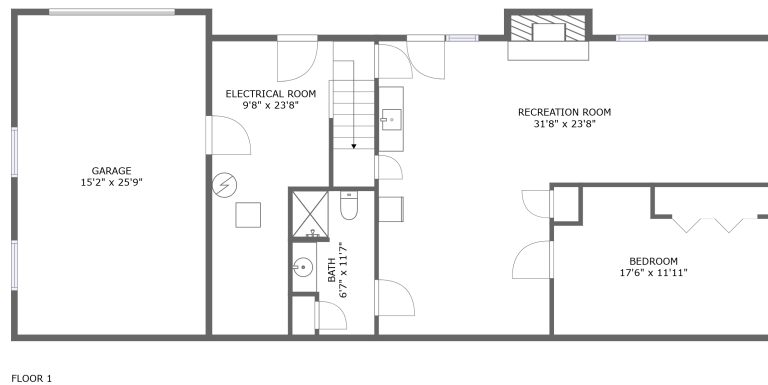
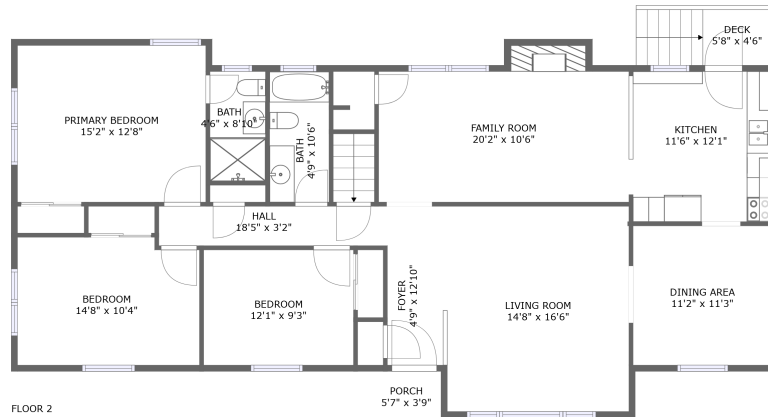



4802 Westhill Drive, Sugar Loaf Farms, Cave Spring, Roanoke, Roanoke County, Virginia, United States,



Property summary

 **1** Garages

 **4** Bedrooms

 **3** Bathrooms

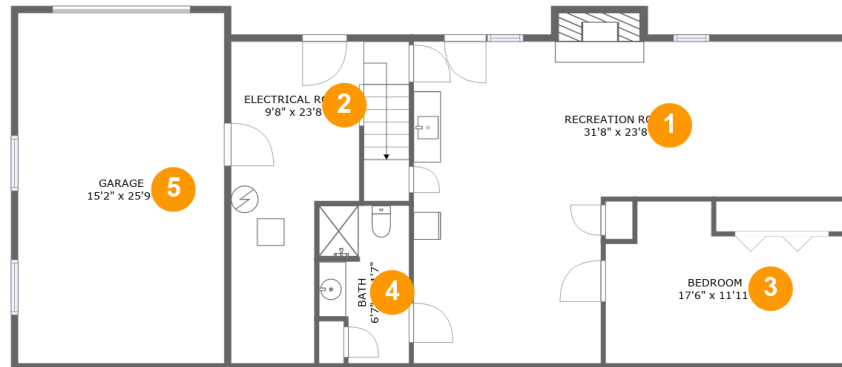
 **0** Half baths

 **2** Floors

 **2,500** Gross living area sqft

 **3,246** Total sqft

4802 Westhill Drive, Sugar Loaf Farms, Cave Spring, Roanoke, Roanoke County, Virginia, United States,



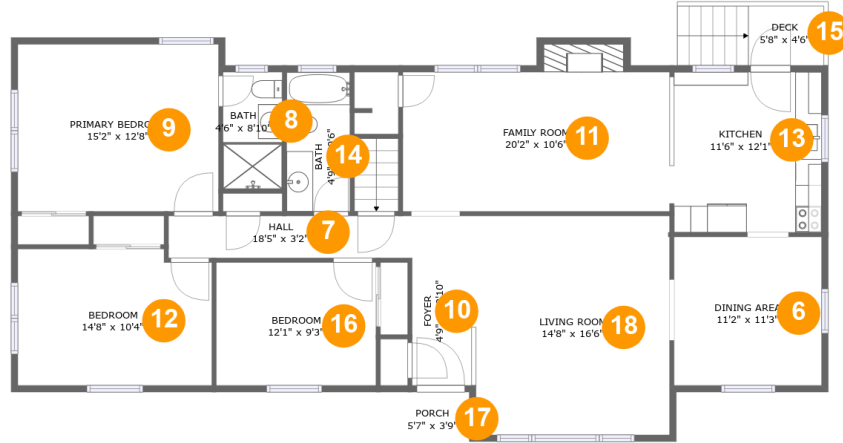
Room dimensions

Floor 1

Total sqft: 1571 Living area: 887

#		Dimensions	sqft	Counted as living area
1	Recreation Room	31'8" x 23'8"	542 sq. ft	Yes
2	Electrical Room	9'8" x 23'8"	225 sq. ft	No
3	Bedroom	17'6" x 11'11"	177 sq. ft	Yes
4	Bath	6'7" x 11'7"	68 sq. ft	Yes
5	Garage	15'2" x 25'9"	391 sq. ft	No

4802 Westhill Drive, Sugar Loaf Farms, Cave Spring, Roanoke, Roanoke County, Virginia, United States,



Room dimensions

Floor 2

Total sqft: 1675 Living area: 1613

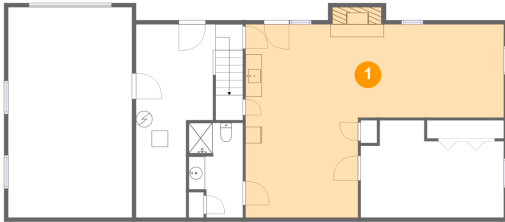
#		Dimensions	sqft	Counted as living area
6	Dining Area	11'2" x 11'3"	125 sq. ft	Yes
7	Hall	18'5" x 3'2"	58 sq. ft	Yes
8	Bath	4'6" x 8'10"	39 sq. ft	Yes
9	Primary Bedroom	15'2" x 12'8"	191 sq. ft	Yes
10	Foyer	4'9" x 12'10"	62 sq. ft	Yes
11	Family Room	20'2" x 10'6"	225 sq. ft	Yes
12	Bedroom	14'8" x 10'4"	147 sq. ft	Yes
13	Kitchen	11'6" x 12'1"	138 sq. ft	Yes
14	Bath	4'9" x 10'6"	69 sq. ft	Yes
15	Deck	5'8" x 4'6"	26 sq. ft	No
16	Bedroom	12'1" x 9'3"	112 sq. ft	Yes

**4802 Westhill Drive, Sugar Loaf Farms, Cave Spring,
Roanoke, Roanoke County, Virginia, United States,**

#		Dimensions	sqft	Counted as living area
17	Porch	5'7" x 3'9"	21 sq. ft	No
18	Living Room	14'8" x 16'6"	242 sq. ft	Yes

4802 Westhill Drive, Sugar Loaf Farms, Cave Spring, Roanoke, Roanoke County, Virginia, United States,

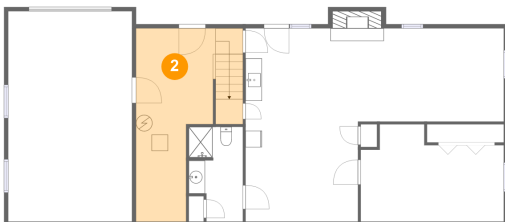
1 Floor 1 - Recreation Room



Dimensions: 31'8" x 23'8"
Area: 542 sq. ft
Counted as living area: Yes

Heated: Yes
Finished: Yes
Enclosed: Yes
Contiguous: Yes
Permitted: Yes
Wet space: No
Addition: No
Conversion: No

2 Floor 1 - Electrical Room

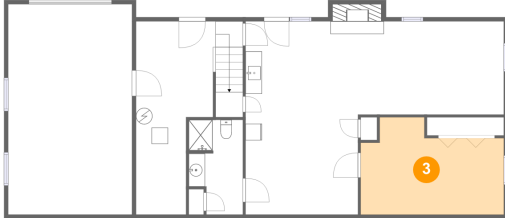


Dimensions: 9'8" x 23'8"
Area: 225 sq. ft
Counted as living area: No

Heated: No
Finished: No
Enclosed: Yes
Contiguous: Yes
Permitted: Yes
Wet space: No
Addition: No
Conversion: No

**4802 Westhill Drive, Sugar Loaf Farms, Cave Spring,
Roanoke, Roanoke County, Virginia, United States,**

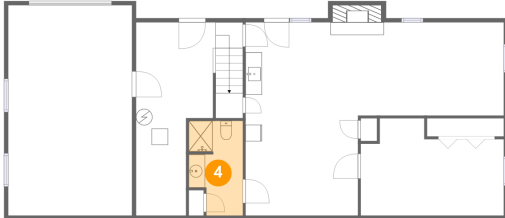
3 Floor 1 - Bedroom



Dimensions: 17'6" x 11'11"
Area: 177 sq. ft
Counted as living area: Yes

Heated: Yes
Finished: Yes
Enclosed: Yes
Contiguous: Yes
Permitted: Yes
Wet space: No
Addition: No
Conversion: No

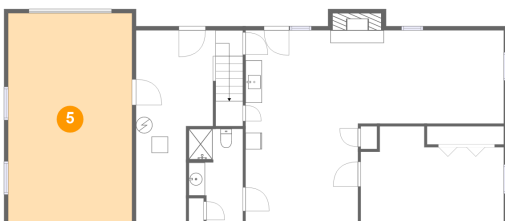
4 Floor 1 - Bath



Dimensions: 6'7" x 11'7"
Area: 68 sq. ft
Counted as living area: Yes

Heated: Yes
Finished: Yes
Enclosed: Yes
Contiguous: Yes
Permitted: Yes
Wet space: Yes
Addition: No
Conversion: No

5 Floor 1 - Garage



Dimensions: 15'2" x 25'9"
Area: 391 sq. ft
Counted as living area: No

Heated: No
Finished: No
Enclosed: Yes
Contiguous: Yes
Permitted: Yes
Wet space: No
Addition: No
Conversion: No

4802 Westhill Drive, Sugar Loaf Farms, Cave Spring, Roanoke, Roanoke County, Virginia, United States,

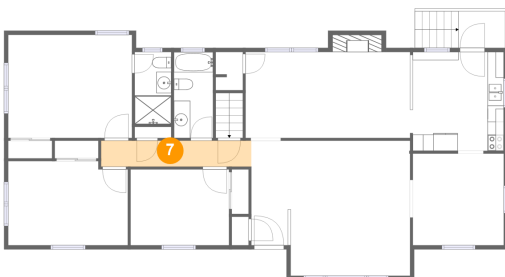
6 Floor 2 - Dining Area



Dimensions: 11'2" x 11'3"
Area: 125 sq. ft
Counted as living area: Yes

Heated: Yes
Finished: Yes
Enclosed: Yes
Contiguous: Yes
Permitted: Yes
Wet space: No
Addition: No
Conversion: No

7 Floor 2 - Hall



Dimensions: 18'5" x 3'2"
Area: 58 sq. ft
Counted as living area: Yes

Heated: Yes
Finished: Yes
Enclosed: Yes
Contiguous: Yes
Permitted: Yes
Wet space: No
Addition: No
Conversion: No

8 Floor 2 - Bath

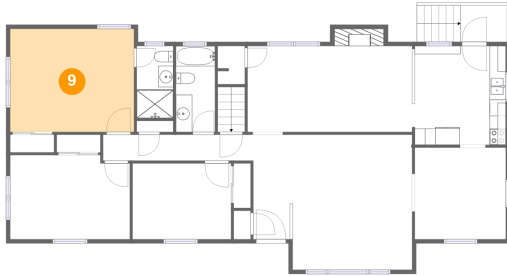


Dimensions: 4'6" x 8'10"
Area: 39 sq. ft
Counted as living area: Yes

Heated: Yes
Finished: Yes
Enclosed: Yes
Contiguous: Yes
Permitted: Yes
Wet space: Yes
Addition: No
Conversion: No

**4802 Westhill Drive, Sugar Loaf Farms, Cave Spring,
Roanoke, Roanoke County, Virginia, United States,**

9 Floor 2 - Primary Bedroom



Dimensions: 15'2" x 12'8"
Area: 191 sq. ft
Counted as living area: Yes

Heated: Yes
Finished: Yes
Enclosed: Yes
Contiguous: Yes
Permitted: Yes
Wet space: No
Addition: No
Conversion: No

10 Floor 2 - Foyer



Dimensions: 4'9" x 12'10"
Area: 62 sq. ft
Counted as living area: Yes

Heated: Yes
Finished: Yes
Enclosed: Yes
Contiguous: Yes
Permitted: Yes
Wet space: No
Addition: No
Conversion: No

11 Floor 2 - Family Room



Dimensions: 20'2" x 10'6"
Area: 225 sq. ft
Counted as living area: Yes

Heated: Yes
Finished: Yes
Enclosed: Yes
Contiguous: Yes
Permitted: Yes
Wet space: No
Addition: No
Conversion: No

**4802 Westhill Drive, Sugar Loaf Farms, Cave Spring,
Roanoke, Roanoke County, Virginia, United States,****12 Floor 2 - Bedroom**

Dimensions: 14'8" x 10'4"
Area: 147 sq. ft
Counted as living area: Yes

Heated: Yes
Finished: Yes
Enclosed: Yes
Contiguous: Yes
Permitted: Yes
Wet space: No
Addition: No
Conversion: No

13 Floor 2 - Kitchen

Dimensions: 11'6" x 12'1"
Area: 138 sq. ft
Counted as living area: Yes

Heated: Yes
Finished: Yes
Enclosed: Yes
Contiguous: Yes
Permitted: Yes
Wet space: No
Addition: No
Conversion: No

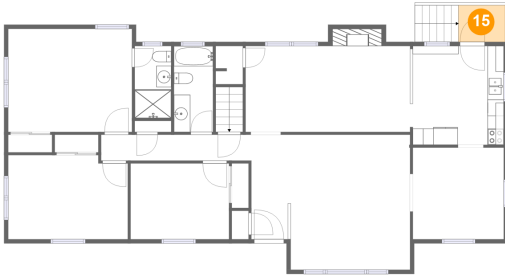
14 Floor 2 - Bath

Dimensions: 4'9" x 10'6"
Area: 69 sq. ft
Counted as living area: Yes

Heated: Yes
Finished: Yes
Enclosed: Yes
Contiguous: Yes
Permitted: Yes
Wet space: Yes
Addition: No
Conversion: No

**4802 Westhill Drive, Sugar Loaf Farms, Cave Spring,
Roanoke, Roanoke County, Virginia, United States,**

15 Floor 2 - Deck



Dimensions: 5'8" x 4'6"
Area: 26 sq. ft
Counted as living area: No

Heated: No
Finished: Yes
Enclosed: No
Contiguous: Yes
Permitted: Yes
Wet space: No
Addition: No
Conversion: No

16 Floor 2 - Bedroom



Dimensions: 12'1" x 9'3"
Area: 112 sq. ft
Counted as living area: Yes

Heated: Yes
Finished: Yes
Enclosed: Yes
Contiguous: Yes
Permitted: Yes
Wet space: No
Addition: No
Conversion: No

17 Floor 2 - Porch

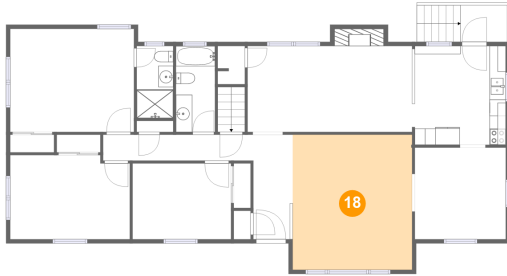


Dimensions: 5'7" x 3'9"
Area: 21 sq. ft
Counted as living area: No

Heated: No
Finished: Yes
Enclosed: No
Contiguous: Yes
Permitted: Yes
Wet space: No
Addition: No
Conversion: No

**4802 Westhill Drive, Sugar Loaf Farms, Cave Spring,
Roanoke, Roanoke County, Virginia, United States,**

18 Floor 2 - Living Room



Dimensions: 14'8" x 16'6"
Area: 242 sq. ft
Counted as living area: Yes

Heated: Yes
Finished: Yes
Enclosed: Yes
Contiguous: Yes
Permitted: Yes
Wet space: No
Addition: No
Conversion: No