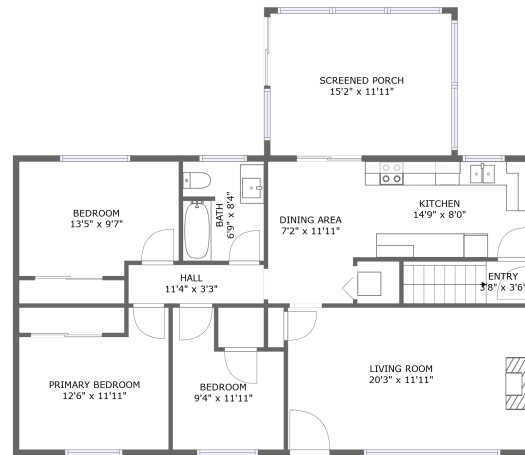
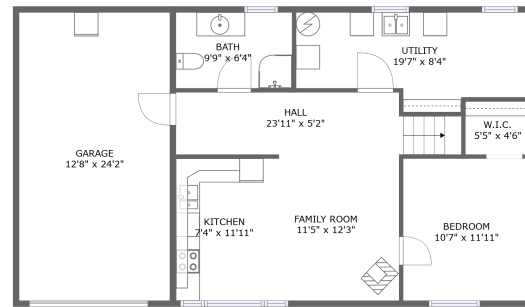


75 Alexander Ave, Peterborough, ON, CA




FLOOR 2



FLOOR 1

Property summary

 **1** Garages

 **4** Bedrooms

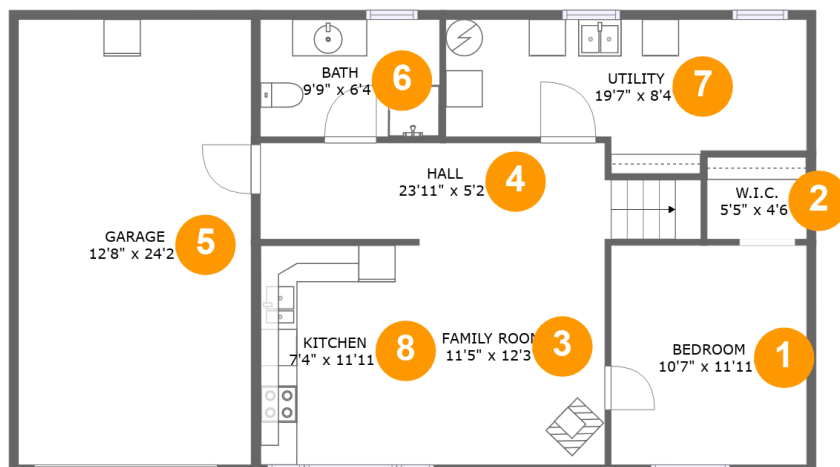
 **2** Bathrooms

 **0** Half baths

 **2** Floors

 **1,719**
Gross living
area sqft

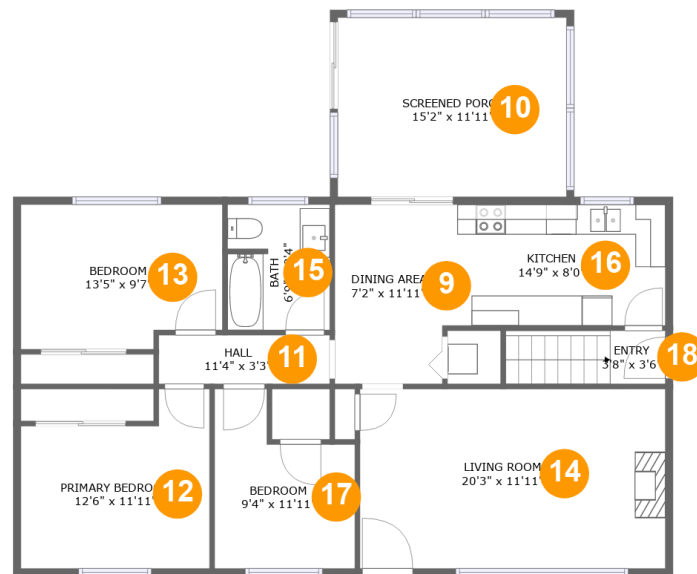
 **2,402**
Total sqft

75 Alexander Ave, Peterborough, ON, CA**Room dimensions**

Floor 1

Total sqft: 1100 Living area: 618

#		Dimensions	sqft	Counted as living area
1	Bedroom	10'7" x 11'11"	126 sq. ft	Yes
2	W.I.C.	5'5" x 4'6"	24 sq. ft	Yes
3	Family Room	11'5" x 12'3"	139 sq. ft	Yes
4	Hall	23'11" x 5'2"	114 sq. ft	Yes
5	Garage	12'8" x 24'2"	305 sq. ft	No
6	Bath	9'9" x 6'4"	62 sq. ft	Yes
7	Utility	19'7" x 8'4"	139 sq. ft	No
8	Kitchen	7'4" x 11'11"	87 sq. ft	Yes

75 Alexander Ave, Peterborough, ON, CA**Room dimensions**

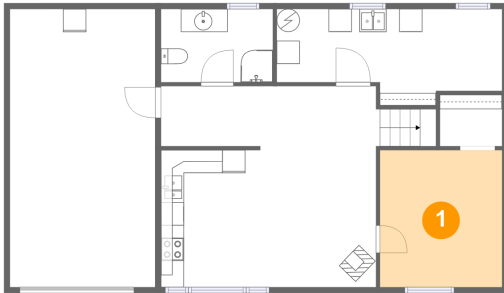
Floor 2

Total sqft: 1302 Living area: 1101

#		Dimensions	sqft	Counted as living area
9	Dining Area	7'2" x 11'11"	85 sq. ft	Yes
10	Screened Porch	15'2" x 11'11"	181 sq. ft	No
11	Hall	11'4" x 3'3"	37 sq. ft	Yes
12	Primary Bedroom	12'6" x 11'11"	127 sq. ft	Yes
13	Bedroom	13'5" x 9'7"	123 sq. ft	Yes
14	Living Room	20'3" x 11'11"	241 sq. ft	Yes
15	Bath	6'9" x 8'4"	56 sq. ft	Yes
16	Kitchen	14'9" x 8'0"	119 sq. ft	Yes
17	Bedroom	9'4" x 11'11"	89 sq. ft	Yes
18	Entry	3'8" x 3'6"	37 sq. ft	Yes

75 Alexander Ave, Peterborough, ON, CA

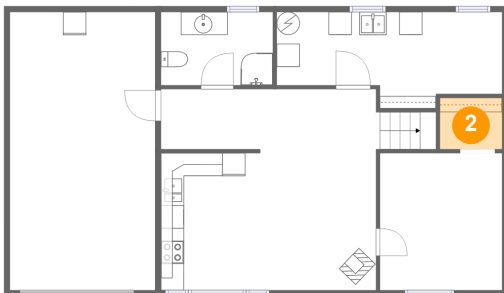
1 Floor 1 - Bedroom



Dimensions: 10'7" x 11'11"
Area: 126 sq. ft
Counted as living area: Yes

Heated: Yes
Finished: Yes
Enclosed: Yes
Contiguous: Yes
Permitted: Yes
Wet space: No
Addition: No
Conversion: No

2 Floor 1 - W.I.C.

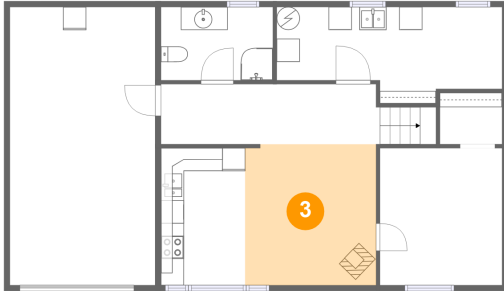


Dimensions: 5'5" x 4'6"
Area: 24 sq. ft
Counted as living area: Yes

Heated: Yes
Finished: Yes
Enclosed: Yes
Contiguous: Yes
Permitted: Yes
Wet space: No
Addition: No
Conversion: No

75 Alexander Ave, Peterborough, ON, CA

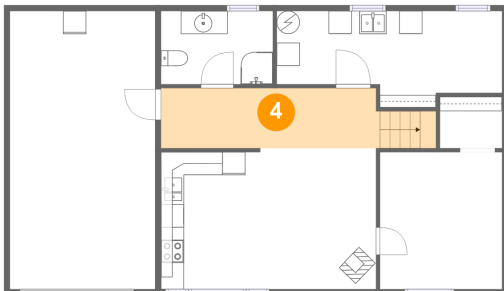
3 Floor 1 - Family Room



Dimensions: 11'5" x 12'3"
Area: 139 sq. ft
Counted as living area: Yes

Heated: Yes
Finished: Yes
Enclosed: Yes
Contiguous: Yes
Permitted: Yes
Wet space: No
Addition: No
Conversion: No

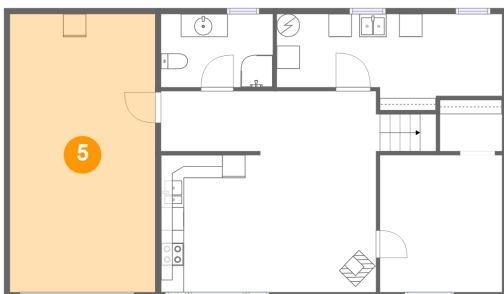
4 Floor 1 - Hall



Dimensions: 23'11" x 5'2"
Area: 114 sq. ft
Counted as living area: Yes

Heated: Yes
Finished: Yes
Enclosed: Yes
Contiguous: Yes
Permitted: Yes
Wet space: No
Addition: No
Conversion: No

5 Floor 1 - Garage

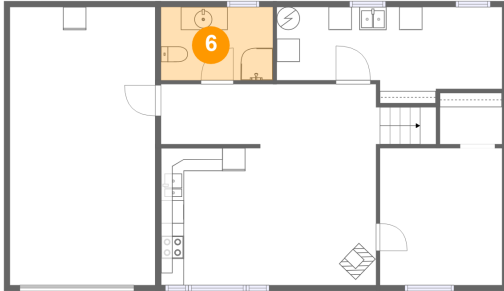


Dimensions: 12'8" x 24'2"
Area: 305 sq. ft
Counted as living area: No

Heated: No
Finished: No
Enclosed: Yes
Contiguous: Yes
Permitted: Yes
Wet space: No
Addition: No
Conversion: No

75 Alexander Ave, Peterborough, ON, CA

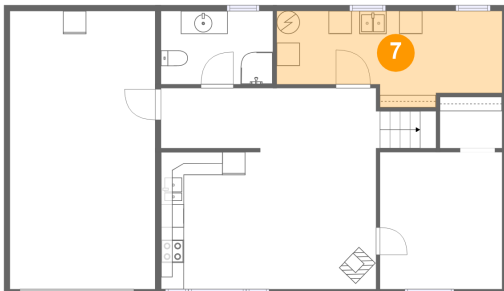
6 Floor 1 - Bath



Dimensions: 9'9" x 6'4"
Area: 62 sq. ft
Counted as living area: Yes

Heated: Yes
Finished: Yes
Enclosed: Yes
Contiguous: Yes
Permitted: Yes
Wet space: Yes
Addition: No
Conversion: No

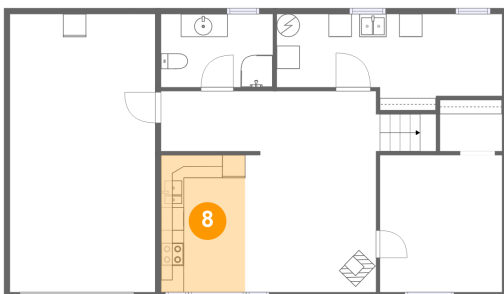
7 Floor 1 - Utility



Dimensions: 19'7" x 8'4"
Area: 139 sq. ft
Counted as living area: No

Heated: No
Finished: No
Enclosed: Yes
Contiguous: Yes
Permitted: Yes
Wet space: No
Addition: No
Conversion: No

8 Floor 1 - Kitchen

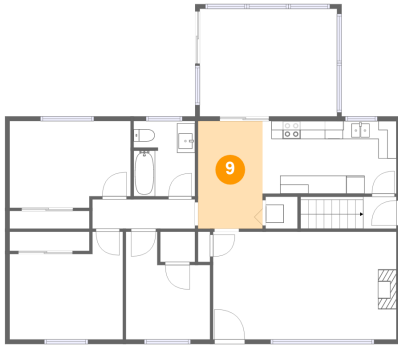


Dimensions: 7'4" x 11'11"
Area: 87 sq. ft
Counted as living area: Yes

Heated: Yes
Finished: Yes
Enclosed: Yes
Contiguous: Yes
Permitted: Yes
Wet space: No
Addition: No
Conversion: No

75 Alexander Ave, Peterborough, ON, CA

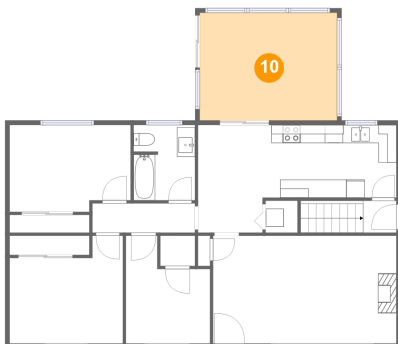
9 Floor 2 - Dining Area



Dimensions: 7'2" x 11'11"
Area: 85 sq. ft
Counted as living area: Yes

Heated: Yes
Finished: Yes
Enclosed: Yes
Contiguous: Yes
Permitted: Yes
Wet space: No
Addition: No
Conversion: No

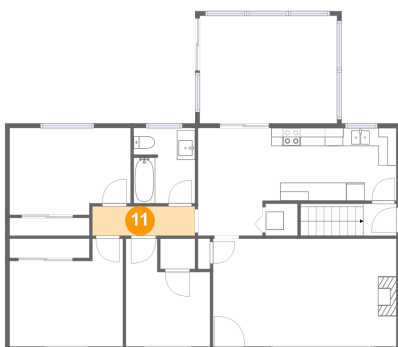
10 Floor 2 - Screened Porch



Dimensions: 15'2" x 11'11"
Area: 181 sq. ft
Counted as living area: No

Heated: No
Finished: Yes
Enclosed: No
Contiguous: Yes
Permitted: Yes
Wet space: No
Addition: No
Conversion: No

11 Floor 2 - Hall

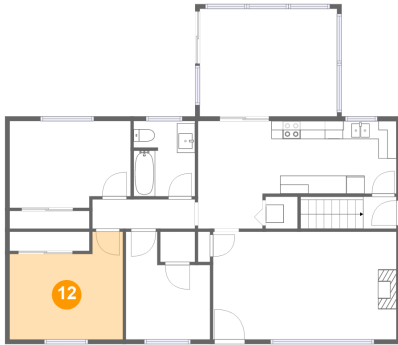


Dimensions: 11'4" x 3'3"
Area: 37 sq. ft
Counted as living area: Yes

Heated: Yes
Finished: Yes
Enclosed: Yes
Contiguous: Yes
Permitted: Yes
Wet space: No
Addition: No
Conversion: No

75 Alexander Ave, Peterborough, ON, CA

12 Floor 2 - Primary Bedroom



Dimensions: 12'6" x 11'11"
Area: 127 sq. ft
Counted as living area: Yes

Heated: Yes
Finished: Yes
Enclosed: Yes
Contiguous: Yes
Permitted: Yes
Wet space: No
Addition: No
Conversion: No

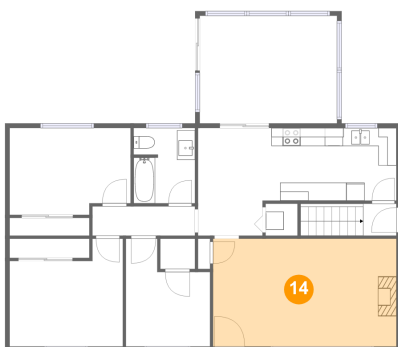
13 Floor 2 - Bedroom



Dimensions: 13'5" x 9'7"
Area: 123 sq. ft
Counted as living area: Yes

Heated: Yes
Finished: Yes
Enclosed: Yes
Contiguous: Yes
Permitted: Yes
Wet space: No
Addition: No
Conversion: No

14 Floor 2 - Living Room



Dimensions: 20'3" x 11'11"
Area: 241 sq. ft
Counted as living area: Yes

Heated: Yes
Finished: Yes
Enclosed: Yes
Contiguous: Yes
Permitted: Yes
Wet space: No
Addition: No
Conversion: No

75 Alexander Ave, Peterborough, ON, CA

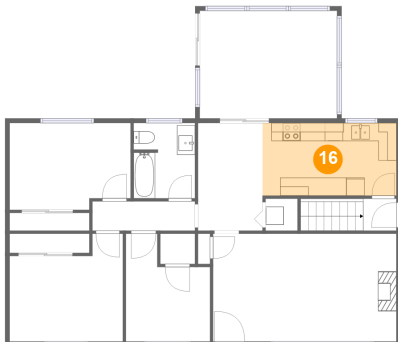
15 Floor 2 - Bath



Dimensions: 6'9" x 8'4"
Area: 56 sq. ft
Counted as living area: Yes

Heated: Yes
Finished: Yes
Enclosed: Yes
Contiguous: Yes
Permitted: Yes
Wet space: Yes
Addition: No
Conversion: No

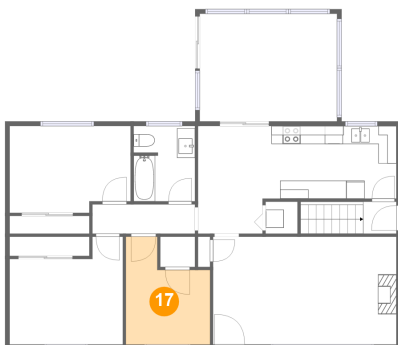
16 Floor 2 - Kitchen



Dimensions: 14'9" x 8'0"
Area: 119 sq. ft
Counted as living area: Yes

Heated: Yes
Finished: Yes
Enclosed: Yes
Contiguous: Yes
Permitted: Yes
Wet space: No
Addition: No
Conversion: No

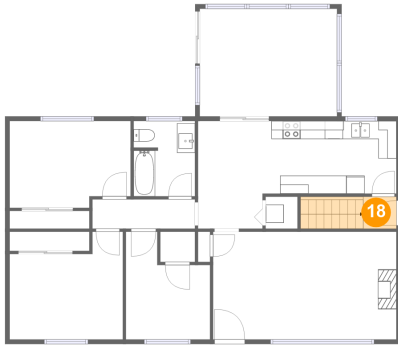
17 Floor 2 - Bedroom



Dimensions: 9'4" x 11'11"
Area: 89 sq. ft
Counted as living area: Yes

Heated: Yes
Finished: Yes
Enclosed: Yes
Contiguous: Yes
Permitted: Yes
Wet space: No
Addition: No
Conversion: No

18 Floor 2 - Entry



Dimensions: 3'8" x 3'6"
Area: 37 sq. ft
Counted as living area: Yes

Heated: Yes
Finished: Yes
Enclosed: Yes
Contiguous: Yes
Permitted: Yes
Wet space: No
Addition: No
Conversion: No