


# 701 South 4th Street, St. Charles, Kane County, Illinois, United States, 60174



## Property summary


 **0** Garages

 **4** Bedrooms

 **4** Bathrooms

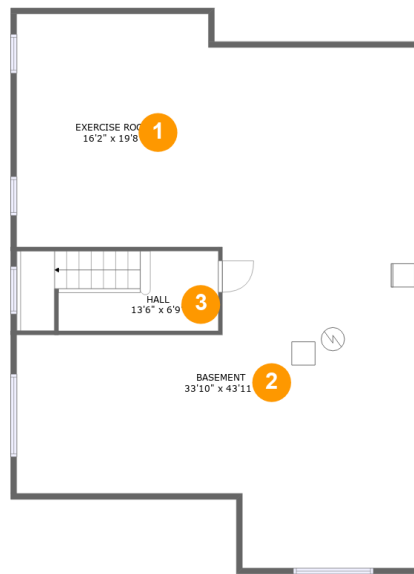
 **1** Half baths

 **4** Floors

 **3,855** Gross living area sqft

 **5,394** Total sqft

701 South 4th Street, St. Charles, Kane County,  
Illinois, United States, 60174



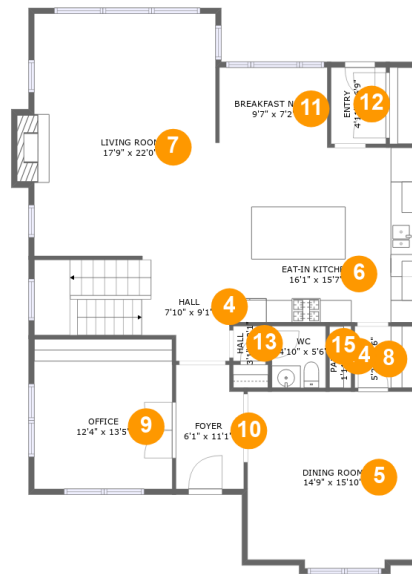
## Room dimensions

Floor 1

Total sqft: 1496 Living area: 0

#		Dimensions	sqft	Counted as living area
1	Exercise Room	16'2" x 19'8"	319 sq. ft	No
2	Basement	33'10" x 43'11"	966 sq. ft	No
3	Hall	13'6" x 6'9"	114 sq. ft	No

701 South 4th Street, St. Charles, Kane County,  
Illinois, United States, 60174



## Room dimensions

Floor 2

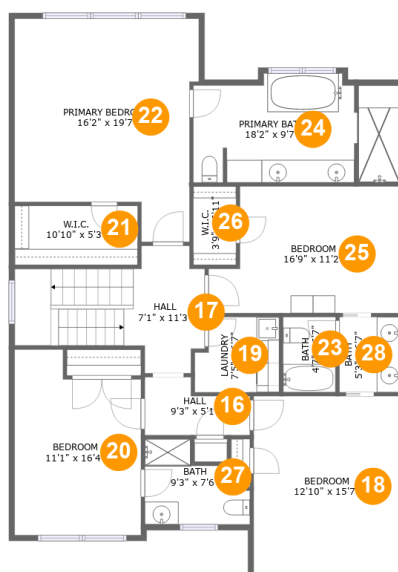
Total sqft: 1546 Living area: 1535

#		Dimensions	sqft	Counted as living area
4	Hall	7'10" x 9'1"	130 sq. ft	Yes
5	Dining Room	14'9" x 15'10"	228 sq. ft	Yes
6	Eat-in Kitchen	16'1" x 15'7"	251 sq. ft	Yes
7	Living Room	17'9" x 22'0"	379 sq. ft	Yes
8	Hall	5'2" x 5'6"	29 sq. ft	Yes
9	Office	12'4" x 13'5"	165 sq. ft	Yes
10	Foyer	6'1" x 11'1"	64 sq. ft	Yes
11	Breakfast Nook	9'7" x 7'2"	69 sq. ft	Yes
12	Entry	4'11" x 6'9"	33 sq. ft	Yes
13	Hall	3'1" x 3'1"	10 sq. ft	Yes
14	Pantry	1'11" x 5'6"	11 sq. ft	Yes

**701 South 4th Street, St. Charles, Kane County,  
Illinois, United States, 60174**

#		Dimensions	sqft	Counted as living area
15	WC	4'10" x 5'6"	27 sq. ft	Yes

701 South 4th Street, St. Charles, Kane County,  
Illinois, United States, 60174



## Room dimensions

Floor 3

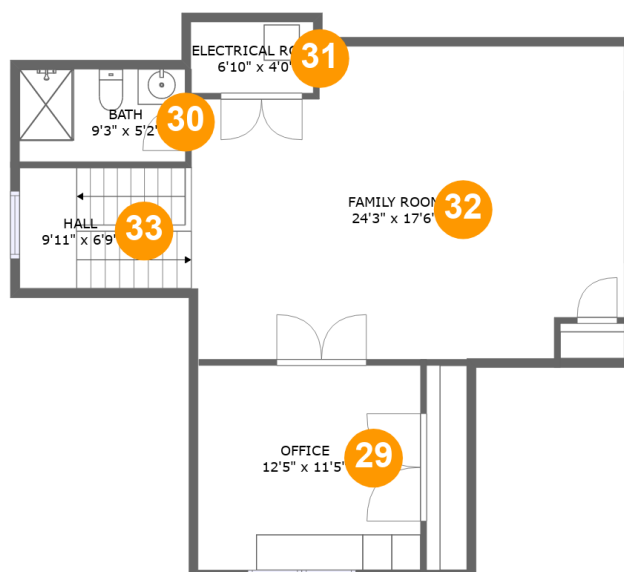
Total sqft: 1560 Living area: 1560

#		Dimensions	sqft	Counted as living area
16	Hall	9'3" x 5'1"	39 sq. ft	Yes
17	Hall	7'1" x 11'3"	132 sq. ft	Yes
18	Bedroom	12'10" x 15'7"	200 sq. ft	Yes
19	Laundry	7'5" x 6'7"	45 sq. ft	Yes
20	Bedroom	11'1" x 16'4"	163 sq. ft	Yes
21	W.I.C.	10'10" x 5'3"	56 sq. ft	Yes
22	Primary Bedroom	16'2" x 19'7"	267 sq. ft	Yes
23	Bath	4'7" x 6'7"	31 sq. ft	Yes
24	Primary Bath	18'2" x 9'7"	159 sq. ft	Yes
25	Bedroom	16'9" x 11'2"	167 sq. ft	Yes
26	W.I.C.	3'9" x 6'11"	26 sq. ft	Yes
27	Bath	9'3" x 7'6"	70 sq. ft	Yes
28	Bath	5'8" x 7'7"	44 sq. ft	Yes

**701 South 4th Street, St. Charles, Kane County,  
Illinois, United States, 60174**

#		Dimensions	sqft	Counted as living area
27	Bath	9'3" x 7'6"	53 sq. ft	Yes
28	Bath	5'3" x 6'7"	35 sq. ft	Yes

701 South 4th Street, St. Charles, Kane County,  
Illinois, United States, 60174



## Room dimensions

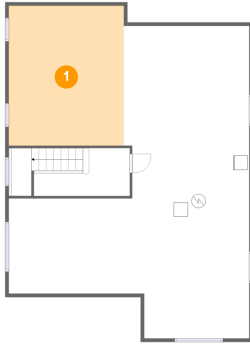
Floor 4

Total sqft: 792 Living area: 760

#		Dimensions	sqft	Counted as living area
29	Office	12'5" x 11'5"	143 sq. ft	Yes
30	Bath	9'3" x 5'2"	48 sq. ft	Yes
31	Electrical Room	6'10" x 4'0"	27 sq. ft	No
32	Family Room	24'3" x 17'6"	391 sq. ft	Yes
33	Hall	9'11" x 6'9"	65 sq. ft	Yes

701 South 4th Street, St. Charles, Kane County,  
Illinois, United States, 60174

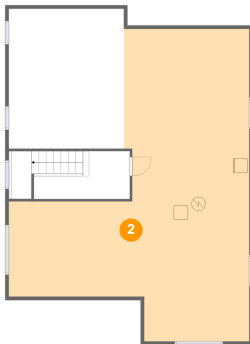
## 1 Floor 1 - Exercise Room



Dimensions: 16'2" x 19'8"  
Area: 319 sq. ft  
Counted as living area: No

Heated: Yes  
Finished: No  
Enclosed: Yes  
Contiguous: Yes  
Permitted: Yes  
Wet space: No  
Addition: No  
Conversion: No

## 2 Floor 1 - Basement



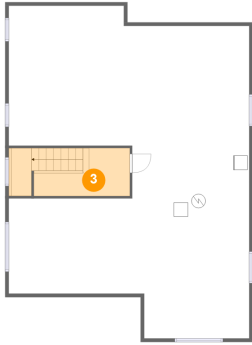
Dimensions: 33'10" x 43'11"  
Area: 966 sq. ft  
Counted as living area: No

Heated: Yes  
Finished: No  
Enclosed: Yes  
Contiguous: Yes  
Permitted: Yes  
Wet space: No  
Addition: No  
Conversion: No



701 South 4th Street, St. Charles, Kane County,  
Illinois, United States, 60174

### 3 Floor 1 - Hall



Dimensions: 13'6" x 6'9"  
Area: 114 sq. ft  
Counted as living area: No

Heated: Yes  
Finished: Yes  
Enclosed: Yes  
Contiguous: No  
Permitted: Yes  
Wet space: No  
Addition: No  
Conversion: No

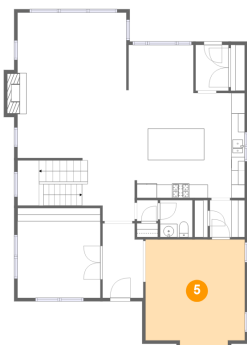
### 4 Floor 2 - Hall



Dimensions: 7'10" x 9'1"  
Area: 130 sq. ft  
Counted as living area: Yes

Heated: Yes  
Finished: Yes  
Enclosed: Yes  
Contiguous: Yes  
Permitted: Yes  
Wet space: No  
Addition: No  
Conversion: No

### 5 Floor 2 - Dining Room

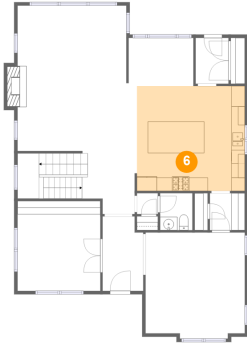


Dimensions: 14'9" x 15'10"  
Area: 228 sq. ft  
Counted as living area: Yes

Heated: Yes  
Finished: Yes  
Enclosed: Yes  
Contiguous: Yes  
Permitted: Yes  
Wet space: No  
Addition: No  
Conversion: No

701 South 4th Street, St. Charles, Kane County,  
Illinois, United States, 60174

## 6 Floor 2 - Eat-in Kitchen



Dimensions: 16'1" x 15'7"  
Area: 251 sq. ft  
Counted as living area: Yes

Heated: Yes  
Finished: Yes  
Enclosed: Yes  
Contiguous: Yes  
Permitted: Yes  
Wet space: No  
Addition: No  
Conversion: No

## 7 Floor 2 - Living Room



Dimensions: 17'9" x 22'0"  
Area: 379 sq. ft  
Counted as living area: Yes

Heated: Yes  
Finished: Yes  
Enclosed: Yes  
Contiguous: Yes  
Permitted: Yes  
Wet space: No  
Addition: No  
Conversion: No

## 8 Floor 2 - Hall



Dimensions: 5'2" x 5'6"  
Area: 29 sq. ft  
Counted as living area: Yes

Heated: Yes  
Finished: Yes  
Enclosed: Yes  
Contiguous: Yes  
Permitted: Yes  
Wet space: No  
Addition: No  
Conversion: No

701 South 4th Street, St. Charles, Kane County,  
Illinois, United States, 60174

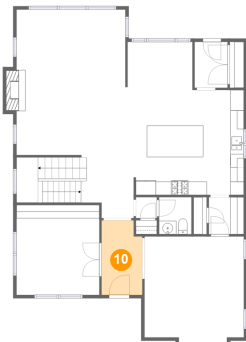
### 9 Floor 2 - Office



Dimensions: 12'4" x 13'5"  
Area: 165 sq. ft  
Counted as living area: Yes

Heated: Yes  
Finished: Yes  
Enclosed: Yes  
Contiguous: Yes  
Permitted: Yes  
Wet space: No  
Addition: No  
Conversion: No

### 10 Floor 2 - Foyer



Dimensions: 6'1" x 11'1"  
Area: 64 sq. ft  
Counted as living area: Yes

Heated: Yes  
Finished: Yes  
Enclosed: Yes  
Contiguous: Yes  
Permitted: Yes  
Wet space: No  
Addition: No  
Conversion: No

### 11 Floor 2 - Breakfast Nook



Dimensions: 9'7" x 7'2"  
Area: 69 sq. ft  
Counted as living area: Yes

Heated: Yes  
Finished: Yes  
Enclosed: Yes  
Contiguous: Yes  
Permitted: Yes  
Wet space: No  
Addition: No  
Conversion: No

701 South 4th Street, St. Charles, Kane County,  
Illinois, United States, 60174

## 12 Floor 2 - Entry



Dimensions: 4'11" x 6'9"  
Area: 33 sq. ft  
Counted as living area: Yes

Heated: Yes  
Finished: Yes  
Enclosed: Yes  
Contiguous: Yes  
Permitted: Yes  
Wet space: No  
Addition: No  
Conversion: No

## 13 Floor 2 - Hall



Dimensions: 3'1" x 3'1"  
Area: 10 sq. ft  
Counted as living area: Yes

Heated: Yes  
Finished: Yes  
Enclosed: Yes  
Contiguous: Yes  
Permitted: Yes  
Wet space: No  
Addition: No  
Conversion: No

## 14 Floor 2 - Pantry



Dimensions: 1'11" x 5'6"  
Area: 11 sq. ft  
Counted as living area: Yes

Heated: Yes  
Finished: Yes  
Enclosed: Yes  
Contiguous: Yes  
Permitted: Yes  
Wet space: No  
Addition: No  
Conversion: No

701 South 4th Street, St. Charles, Kane County,  
Illinois, United States, 60174

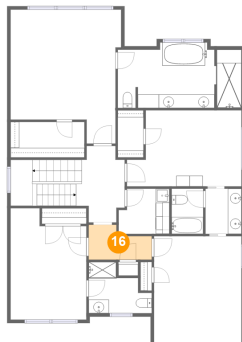
**15** Floor 2 - WC



Dimensions: 4'10" x 5'6"  
Area: 27 sq. ft  
Counted as living area: Yes

Heated: Yes  
Finished: Yes  
Enclosed: Yes  
Contiguous: Yes  
Permitted: Yes  
Wet space: Yes  
Addition: No  
Conversion: No

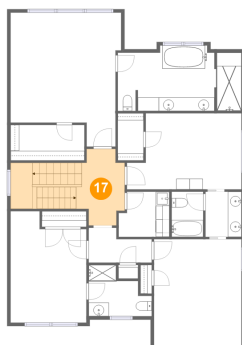
**16** Floor 3 - Hall



Dimensions: 9'3" x 5'1"  
Area: 39 sq. ft  
Counted as living area: Yes

Heated: Yes  
Finished: Yes  
Enclosed: Yes  
Contiguous: Yes  
Permitted: Yes  
Wet space: No  
Addition: No  
Conversion: No

**17** Floor 3 - Hall

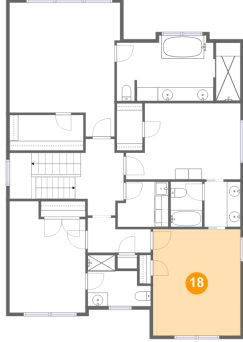


Dimensions: 7'1" x 11'3"  
Area: 132 sq. ft  
Counted as living area: Yes

Heated: Yes  
Finished: Yes  
Enclosed: Yes  
Contiguous: Yes  
Permitted: Yes  
Wet space: No  
Addition: No  
Conversion: No

701 South 4th Street, St. Charles, Kane County,  
Illinois, United States, 60174

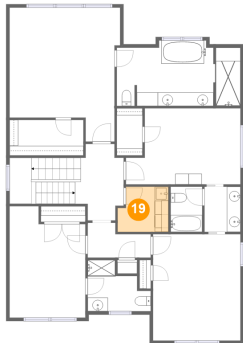
**18** Floor 3 - Bedroom



Dimensions: 12'10" x 15'7"  
Area: 200 sq. ft  
Counted as living area: Yes

Heated: Yes  
Finished: Yes  
Enclosed: Yes  
Contiguous: Yes  
Permitted: Yes  
Wet space: No  
Addition: No  
Conversion: No

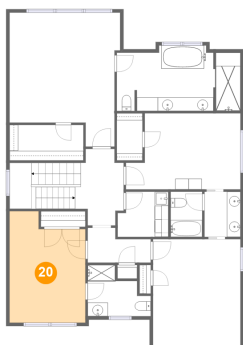
**19** Floor 3 - Laundry



Dimensions: 7'5" x 6'7"  
Area: 45 sq. ft  
Counted as living area: Yes

Heated: Yes  
Finished: Yes  
Enclosed: Yes  
Contiguous: Yes  
Permitted: Yes  
Wet space: No  
Addition: No  
Conversion: No

**20** Floor 3 - Bedroom

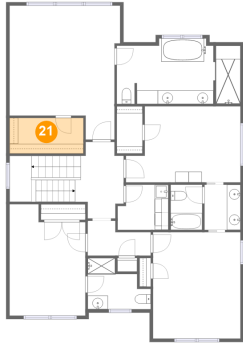


Dimensions: 11'1" x 16'4"  
Area: 163 sq. ft  
Counted as living area: Yes

Heated: Yes  
Finished: Yes  
Enclosed: Yes  
Contiguous: Yes  
Permitted: Yes  
Wet space: No  
Addition: No  
Conversion: No

701 South 4th Street, St. Charles, Kane County,  
Illinois, United States, 60174

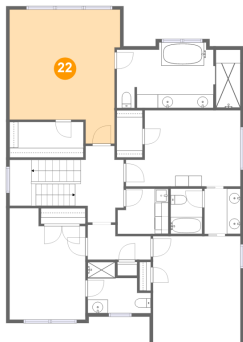
### 21 Floor 3 - W.I.C.



Dimensions: 10'10" x 5'3"  
Area: 56 sq. ft  
Counted as living area: Yes

Heated: Yes  
Finished: Yes  
Enclosed: Yes  
Contiguous: Yes  
Permitted: Yes  
Wet space: No  
Addition: No  
Conversion: No

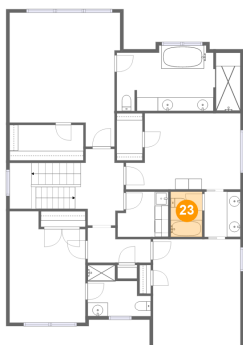
### 22 Floor 3 - Primary Bedroom



Dimensions: 16'2" x 19'7"  
Area: 267 sq. ft  
Counted as living area: Yes

Heated: Yes  
Finished: Yes  
Enclosed: Yes  
Contiguous: Yes  
Permitted: Yes  
Wet space: No  
Addition: No  
Conversion: No

### 23 Floor 3 - Bath

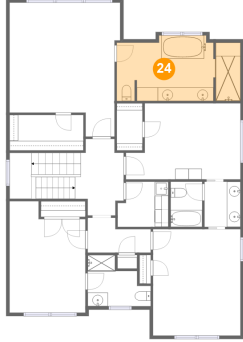


Dimensions: 4'7" x 6'7"  
Area: 31 sq. ft  
Counted as living area: Yes

Heated: Yes  
Finished: Yes  
Enclosed: Yes  
Contiguous: Yes  
Permitted: Yes  
Wet space: Yes  
Addition: No  
Conversion: No

701 South 4th Street, St. Charles, Kane County,  
Illinois, United States, 60174

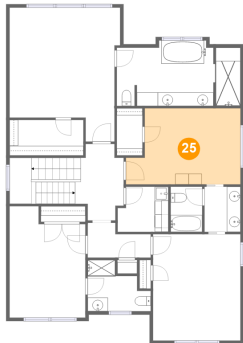
### 24 Floor 3 - Primary Bath



Dimensions: 18'2" x 9'7"  
Area: 159 sq. ft  
Counted as living area: Yes

Heated: Yes  
Finished: Yes  
Enclosed: Yes  
Contiguous: Yes  
Permitted: Yes  
Wet space: Yes  
Addition: No  
Conversion: No

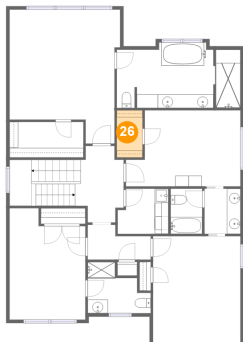
### 25 Floor 3 - Bedroom



Dimensions: 16'9" x 11'2"  
Area: 167 sq. ft  
Counted as living area: Yes

Heated: Yes  
Finished: Yes  
Enclosed: Yes  
Contiguous: Yes  
Permitted: Yes  
Wet space: No  
Addition: No  
Conversion: No

### 26 Floor 3 - W.I.C.



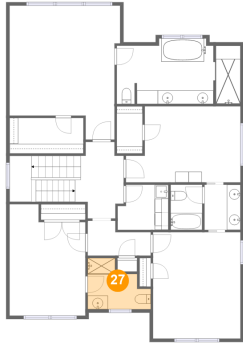
Dimensions: 3'9" x 6'11"  
Area: 26 sq. ft  
Counted as living area: Yes

Heated: Yes  
Finished: Yes  
Enclosed: Yes  
Contiguous: Yes  
Permitted: Yes  
Wet space: No  
Addition: No  
Conversion: No



701 South 4th Street, St. Charles, Kane County,  
Illinois, United States, 60174

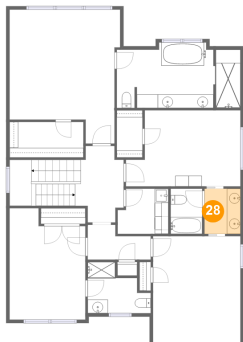
**27** Floor 3 - Bath



Dimensions: 9'3" x 7'6"  
Area: 53 sq. ft  
Counted as living area: Yes

Heated: Yes  
Finished: Yes  
Enclosed: Yes  
Contiguous: Yes  
Permitted: Yes  
Wet space: Yes  
Addition: No  
Conversion: No

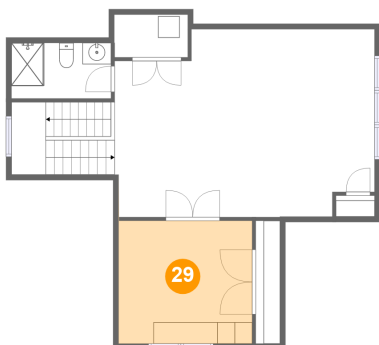
**28** Floor 3 - Bath



Dimensions: 5'3" x 6'7"  
Area: 35 sq. ft  
Counted as living area: Yes

Heated: Yes  
Finished: Yes  
Enclosed: Yes  
Contiguous: Yes  
Permitted: Yes  
Wet space: Yes  
Addition: No  
Conversion: No

**29** Floor 4 - Office

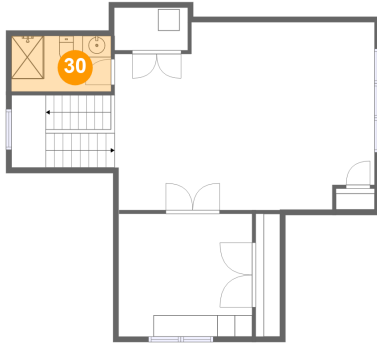


Dimensions: 12'5" x 11'5"  
Area: 143 sq. ft  
Counted as living area: Yes

Heated: Yes  
Finished: Yes  
Enclosed: Yes  
Contiguous: Yes  
Permitted: Yes  
Wet space: No  
Addition: No  
Conversion: No

701 South 4th Street, St. Charles, Kane County,  
Illinois, United States, 60174

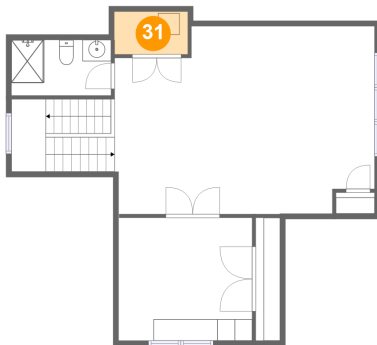
### 30 Floor 4 - Bath



Dimensions: 9'3" x 5'2"  
Area: 48 sq. ft  
Counted as living area: Yes

Heated: Yes  
Finished: Yes  
Enclosed: Yes  
Contiguous: Yes  
Permitted: Yes  
Wet space: Yes  
Addition: No  
Conversion: No

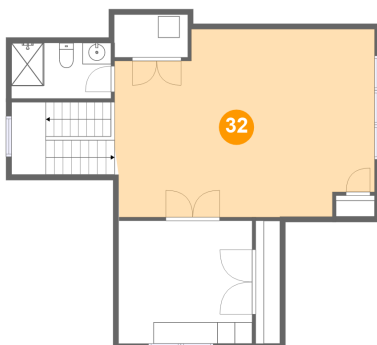
### 31 Floor 4 - Electrical Room



Dimensions: 6'10" x 4'0"  
Area: 27 sq. ft  
Counted as living area: No

Heated: No  
Finished: No  
Enclosed: Yes  
Contiguous: Yes  
Permitted: Yes  
Wet space: No  
Addition: No  
Conversion: No

### 32 Floor 4 - Family Room

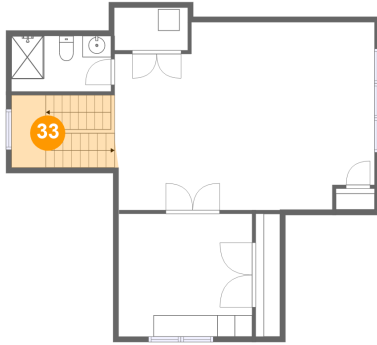


Dimensions: 24'3" x 17'6"  
Area: 391 sq. ft  
Counted as living area: Yes

Heated: Yes  
Finished: Yes  
Enclosed: Yes  
Contiguous: Yes  
Permitted: Yes  
Wet space: No  
Addition: No  
Conversion: No

701 South 4th Street, St. Charles, Kane County,  
Illinois, United States, 60174

**33** Floor 4 - Hall



Dimensions: 9'11" x 6'9"  
Area: 65 sq. ft  
Counted as living area: Yes

Heated: Yes  
Finished: Yes  
Enclosed: Yes  
Contiguous: Yes  
Permitted: Yes  
Wet space: No  
Addition: No  
Conversion: No