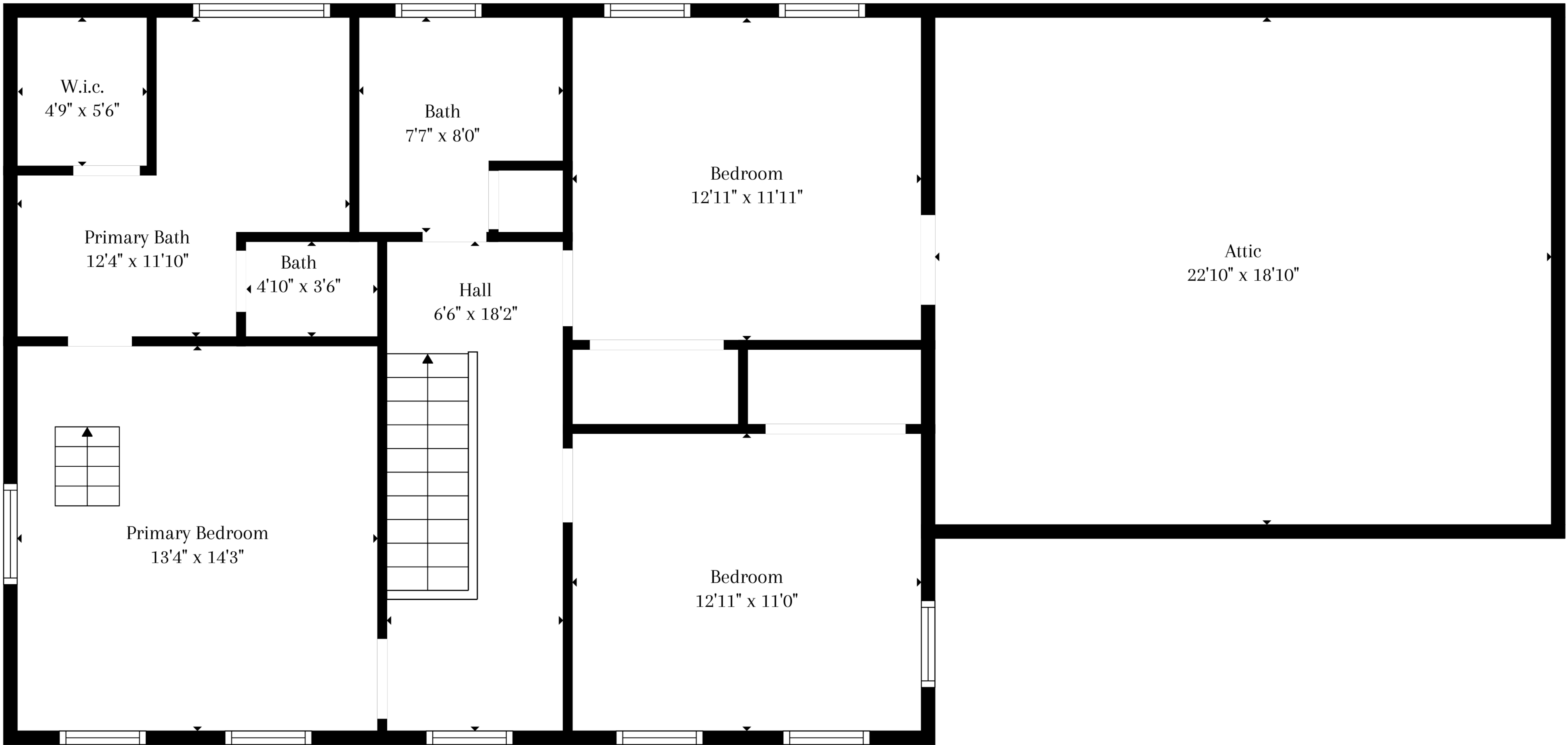
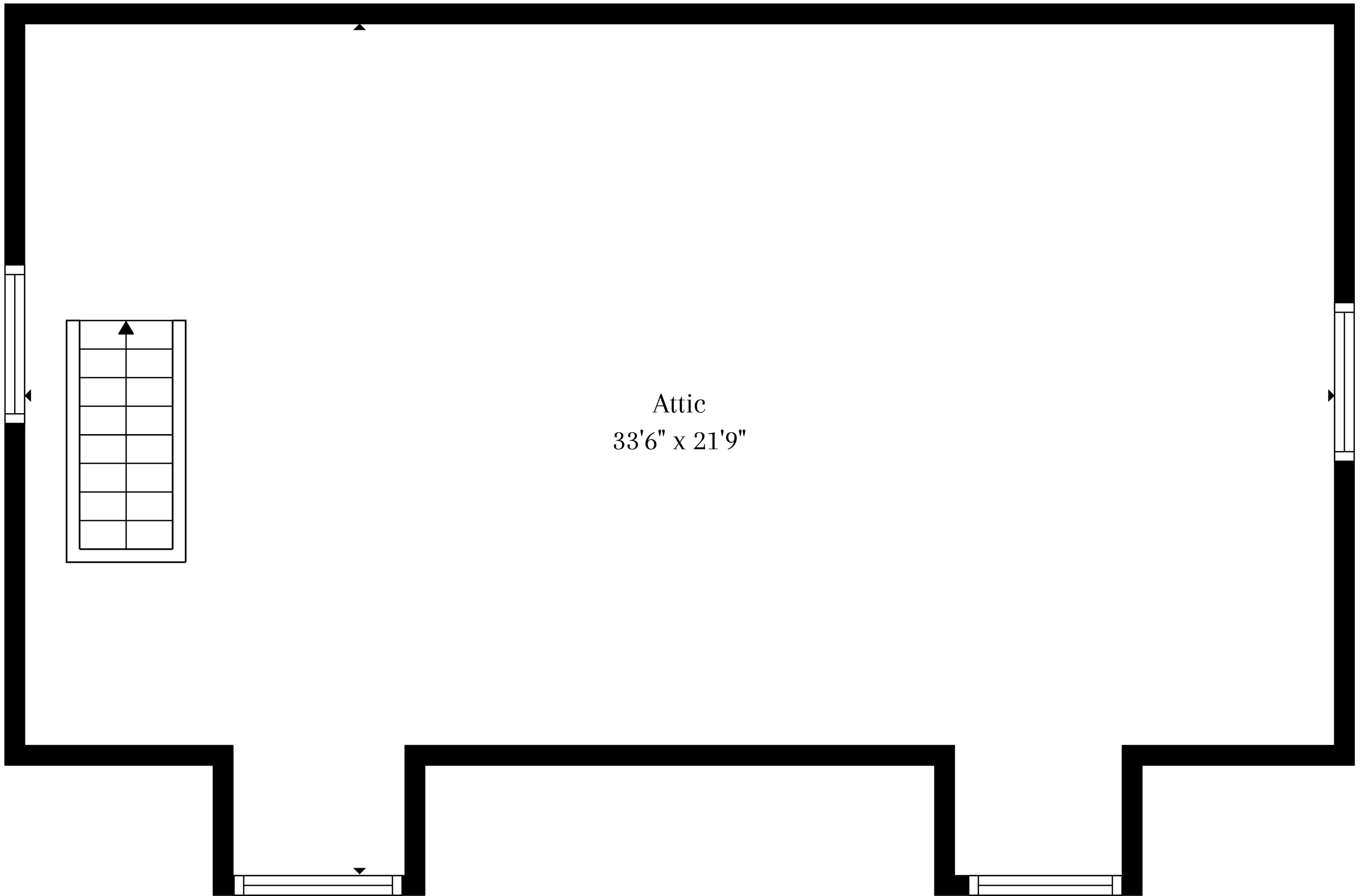


**TOTAL: 1791 sq. ft**  
 FLOOR 1: 893 sq. ft, FLOOR 2: 898 sq. ft, FLOOR 3: 0 sq. ft  
 EXCLUDED AREAS: GARAGE: 430 sq. ft, FIREPLACE: 6 sq. ft, LOW CEILING: 374 sq. ft,  
 ATTIC: 706 sq. ft



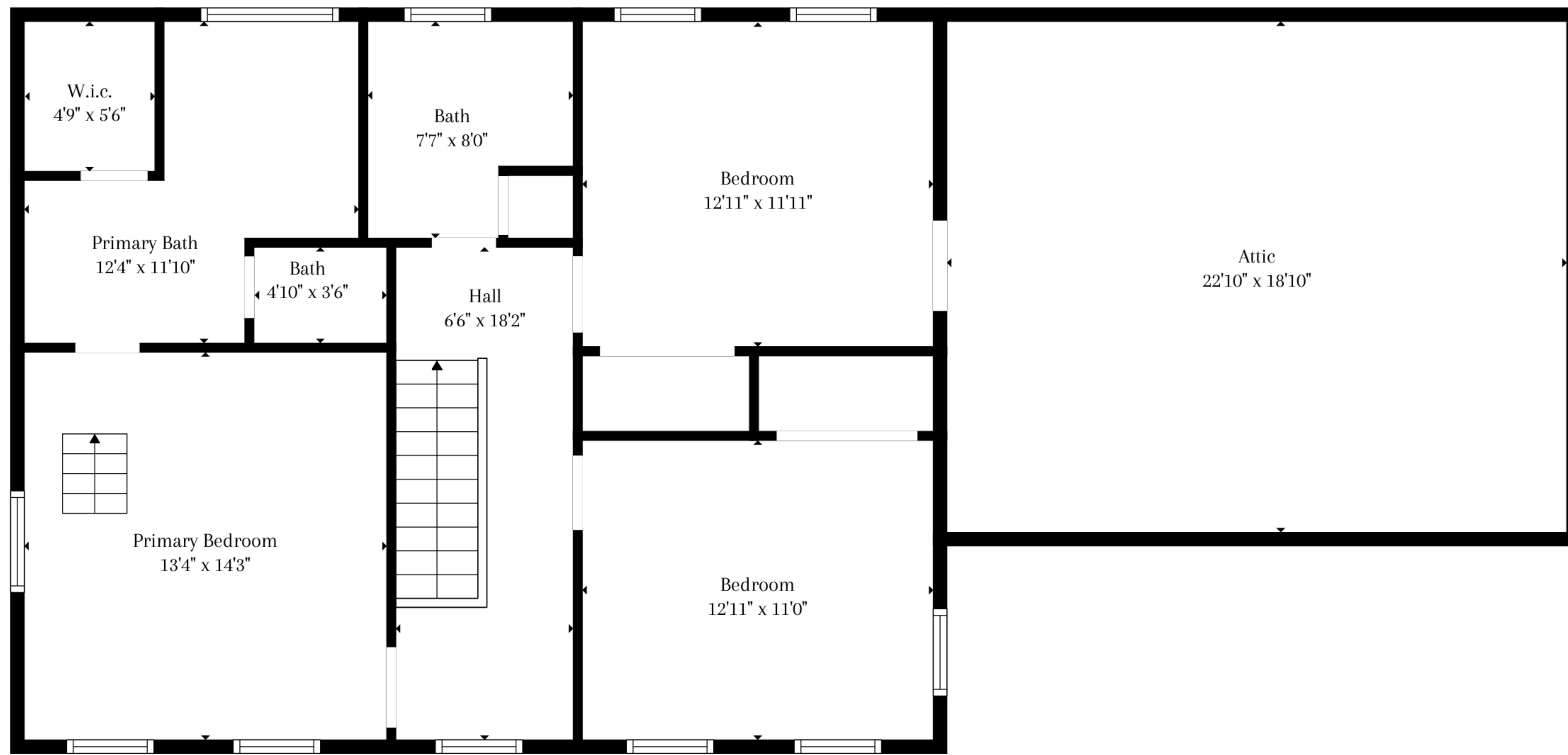
**TOTAL: 1791 sq. ft**

FLOOR 1: 893 sq. ft, FLOOR 2: 898 sq. ft, FLOOR 3: 0 sq. ft  
 EXCLUDED AREAS: GARAGE: 430 sq. ft, FIREPLACE: 6 sq. ft, LOW CEILING: 374 sq. ft,  
 ATTIC: 706 sq. ft

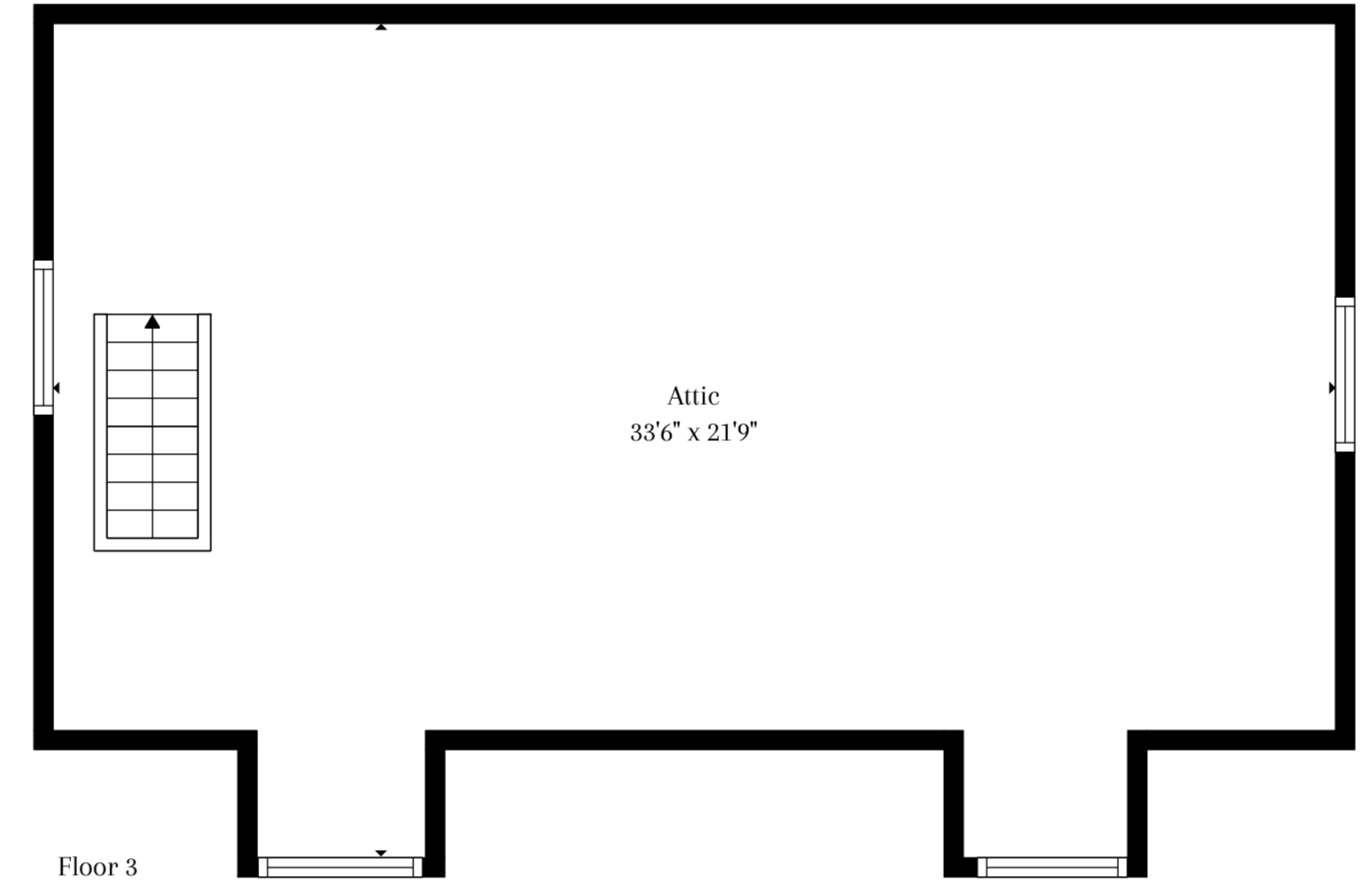


Attic  
33'6" x 21'9"

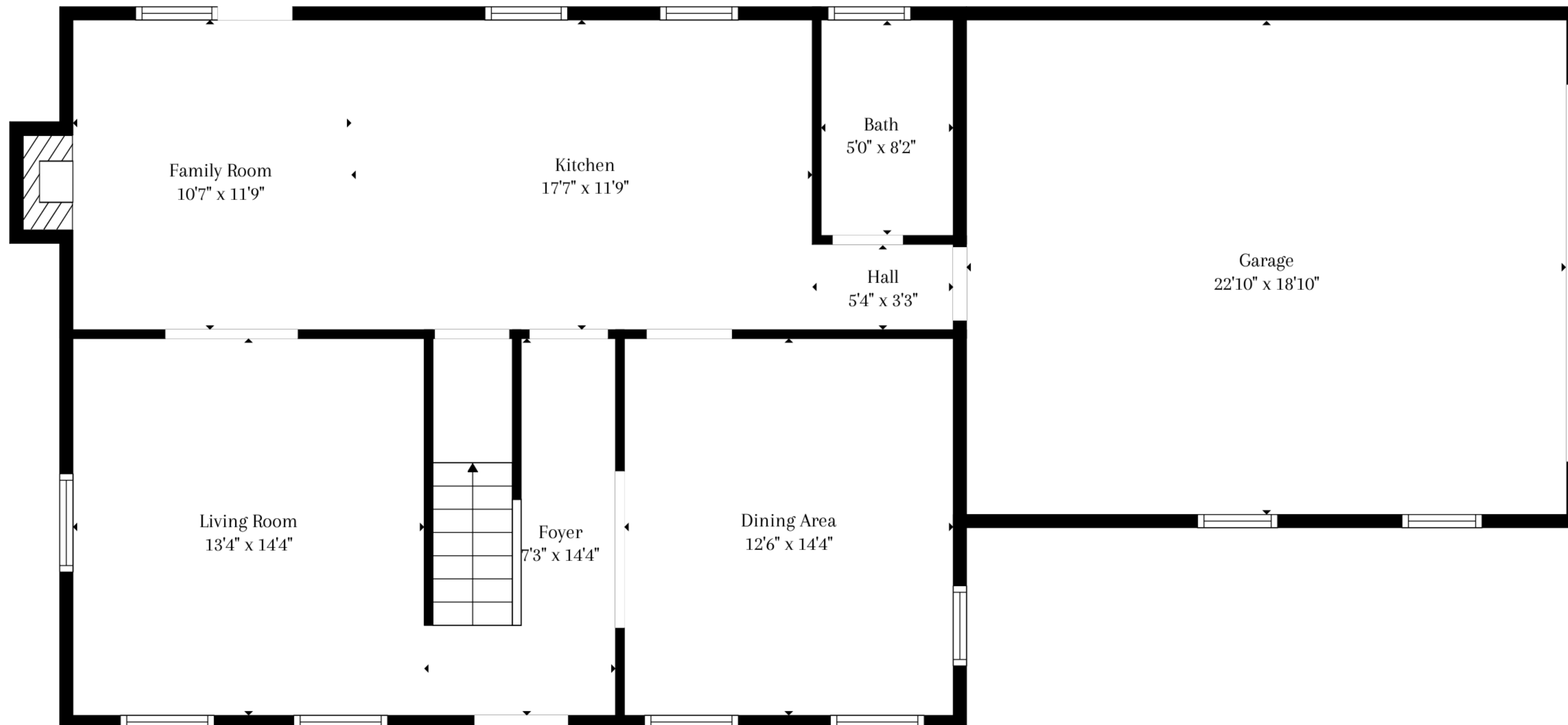
**TOTAL: 1791 sq. ft**  
FLOOR 1: 893 sq. ft, FLOOR 2: 898 sq. ft, FLOOR 3: 0 sq. ft  
EXCLUDED AREAS: GARAGE: 430 sq. ft, FIREPLACE: 6 sq. ft, LOW CEILING: 374 sq. ft,  
ATTIC: 706 sq. ft



Floor 2



Floor 3



Floor 1

**TOTAL: 1791 sq. ft**  
 FLOOR 1: 893 sq. ft, FLOOR 2: 898 sq. ft, FLOOR 3: 0 sq. ft  
 EXCLUDED AREAS: GARAGE: 430 sq. ft, FIREPLACE: 6 sq. ft, LOW CEILING: 374 sq. ft,  
 ATTIC: 706 sq. ft