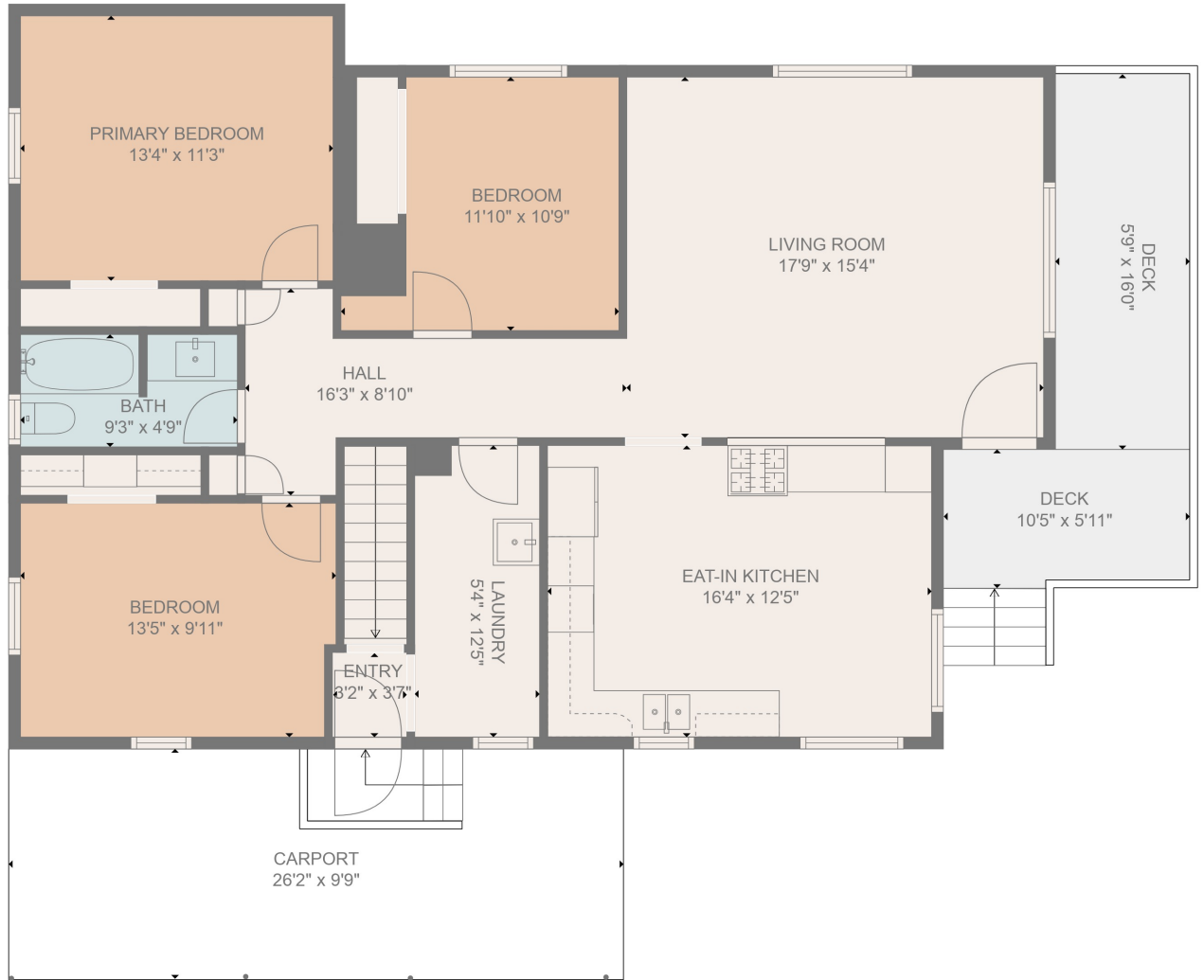


BASEMENT
17'1" x 28'8"

FLOOR 1



PRIMARY BEDROOM
13'4" x 11'3"

BEDROOM
11'10" x 10'9"

LIVING ROOM
17'9" x 15'4"

DECK
5'9" x 16'0"

HALL
16'3" x 8'10"

BATH
9'3" x 4'9"

BEDROOM
13'5" x 9'11"

LAUNDRY
5'4" x 12'5"

EAT-IN KITCHEN
16'4" x 12'5"

DECK
10'5" x 5'11"

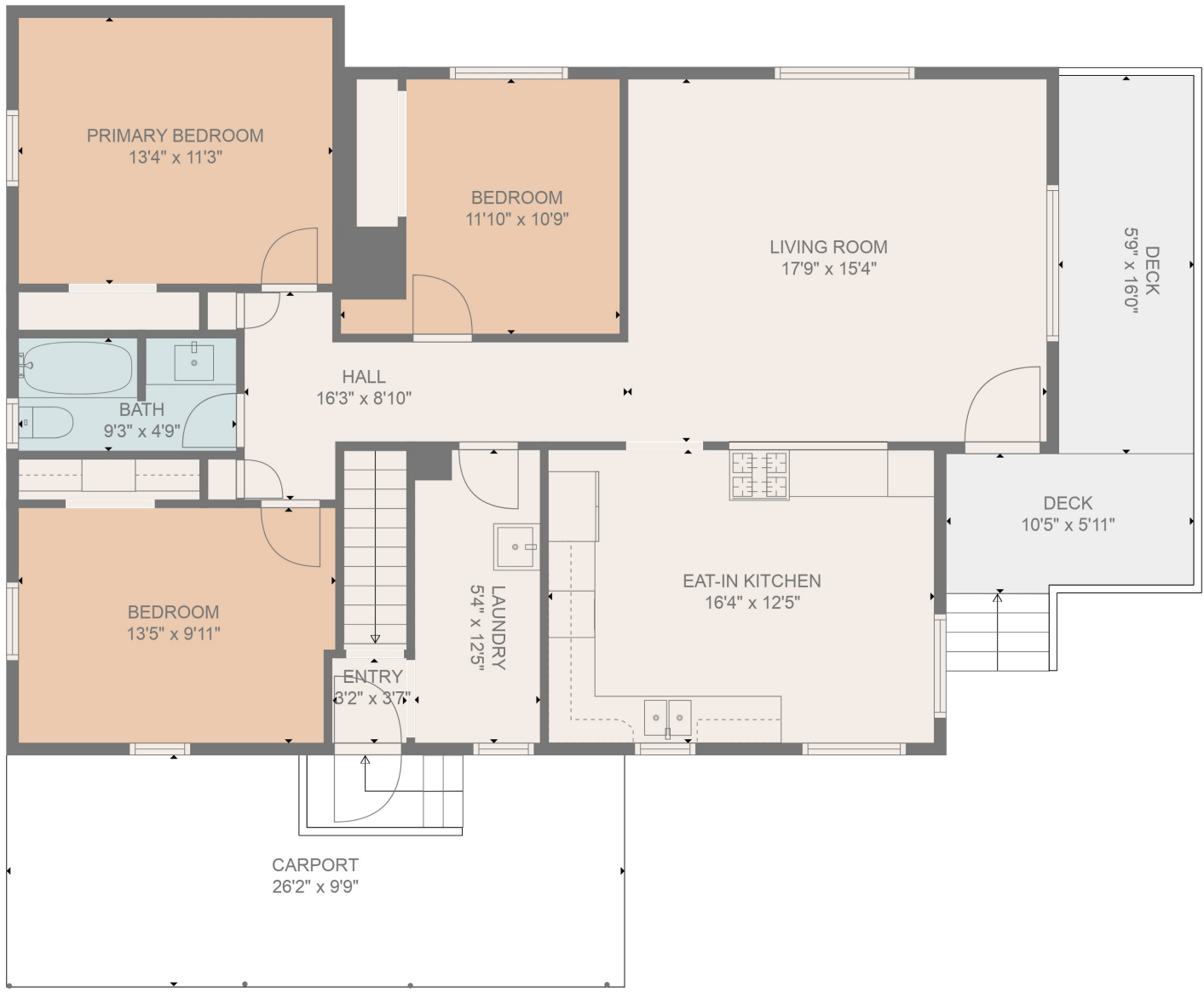
ENTRY
8'2" x 3'7"

CARPORT
26'2" x 9'9"

FLOOR 2

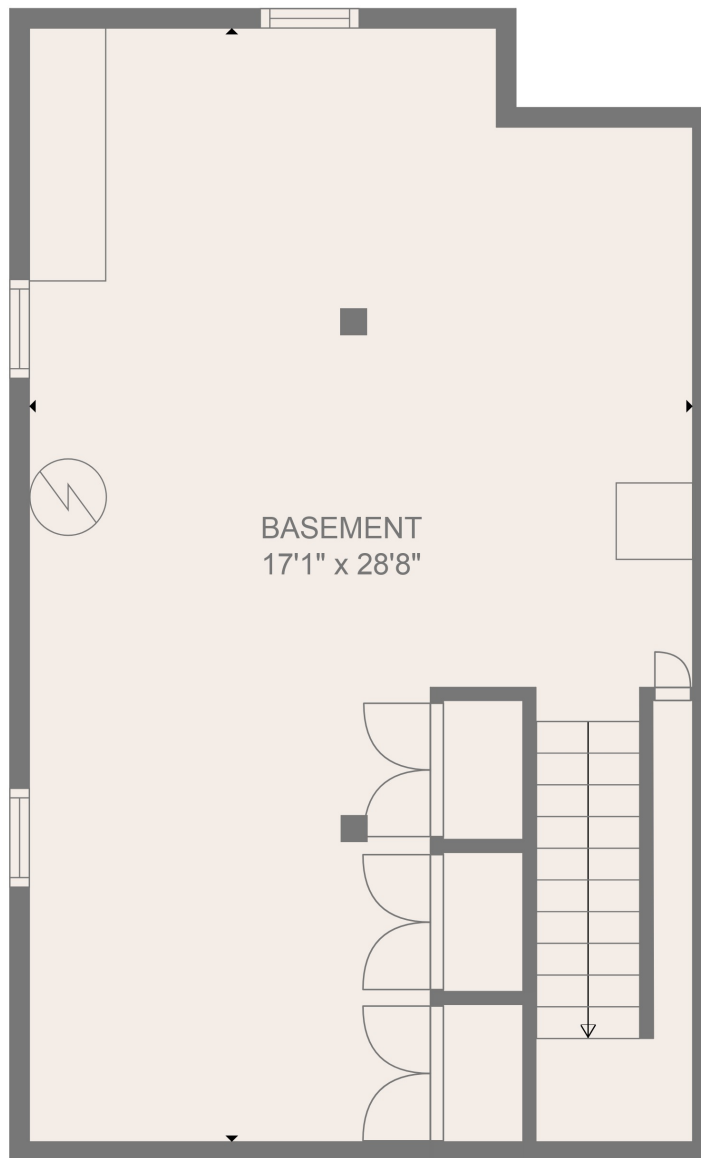
Total scanned area: 2203 sq. ft

MEASUREMENTS ARE DEEMED HIGHLY RELIABLE BUT NOT GUARANTEED



Total scanned area: 2203 sq. ft

MEASUREMENTS ARE DEEMED HIGHLY RELIABLE BUT NOT GUARANTEED



Total scanned area: 2203 sq. ft

MEASUREMENTS ARE DEEMED HIGHLY RELIABLE BUT NOT GUARANTEED