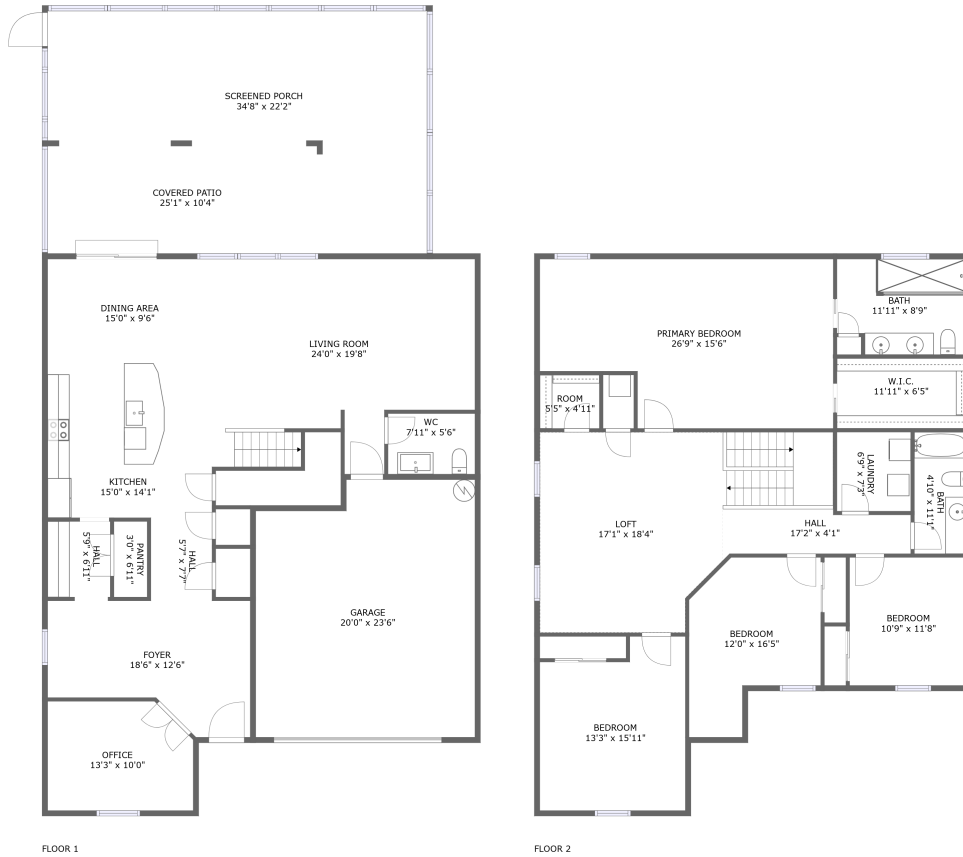


6026 100th Avenue East, Harrison Ranch, Parrish, Manatee County, Florida, United States,



Property Summary

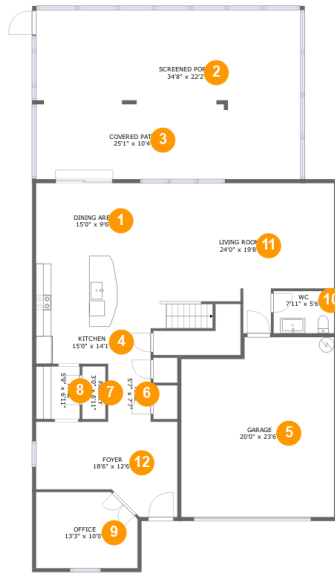
1 garages **4** bedrooms **2** bathrooms **1** half baths

2 floors

3,199 Gross Living Area sqft

4,472 total sqft

**6026 100th Avenue East, Harrison Ranch,
Parrish, Manatee County, Florida, United States,**



Room Dimensions

Floor 1

Total sqft: 2686

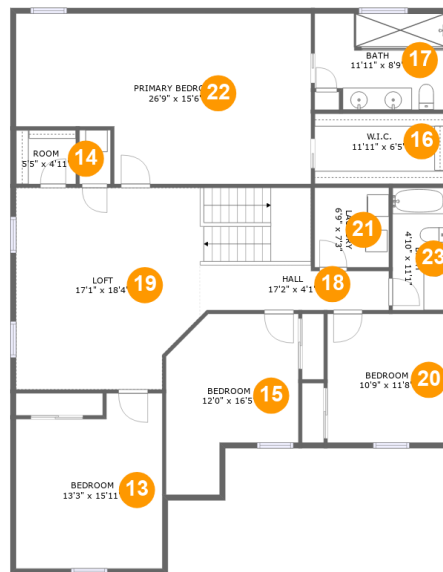
Living area: 1413

#	Room name	Dimensions	Area (sqft)	Counted as Living Area
1	Dining Area	15'0" x 9'6"	143 sq. ft	Yes
2	Screened Porch	34'8" x 22'2"	509 sq. ft	No
3	Covered Patio	25'1" x 10'4"	258 sq. ft	No
4	Kitchen	15'0" x 14'1"	211 sq. ft	Yes
5	Garage	20'0" x 23'6"	447 sq. ft	No
6	Hall	5'7" x 7'7"	42 sq. ft	Yes
7	Pantry	3'0" x 6'11"	21 sq. ft	Yes
8	Hall	5'9" x 6'11"	40 sq. ft	Yes
9	Office	13'3" x 10'0"	126 sq. ft	Yes
10	Wc	7'11" x 5'6"	44 sq. ft	Yes
11	Living Room	24'0" x 19'8"	400 sq. ft	Yes

**6026 100th Avenue East, Harrison Ranch,
Parrish, Manatee County, Florida, United States,**

#	Room name	Dimensions	Area (sqft)	Counted as Living Area
12	Foyer	18'6" x 12'6"	188 sq. ft	Yes

6026 100th Avenue East, Harrison Ranch, Parrish, Manatee County, Florida, United States,



Room Dimensions

Floor 2

Total sqft: 1786

Living area: 1786

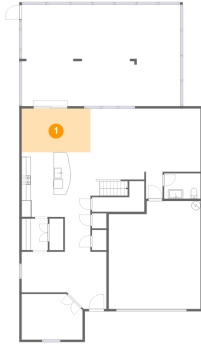
#	Room name	Dimensions	Area (sqft)	Counted as Living Area
13	Bedroom	13'3" x 15'11"	192 sq. ft	Yes
14	Room	5'5" x 4'11"	27 sq. ft	Yes
15	Bedroom	12'0" x 16'5"	156 sq. ft	Yes
16	W.i.c.	11'11" x 6'5"	76 sq. ft	Yes
17	Bath	11'11" x 8'9"	99 sq. ft	Yes
18	Hall	17'2" x 4'1"	66 sq. ft	Yes
19	Loft	17'1" x 18'4"	360 sq. ft	Yes
20	Bedroom	10'9" x 11'8"	125 sq. ft	Yes
21	Laundry	6'9" x 7'3"	49 sq. ft	Yes
22	Primary Bedroom	26'9" x 15'6"	368 sq. ft	Yes
23	Bath	4'10" x 11'1"	53 sq. ft	Yes

Scan captured on Wed, 03 Jul 2024 11:33:50 GMT

Information is calculated by CubiCasa technology; deemed highly reliable but not guaranteed.

6026 100th Avenue East, Harrison Ranch, Parrish, Manatee County, Florida, United States,

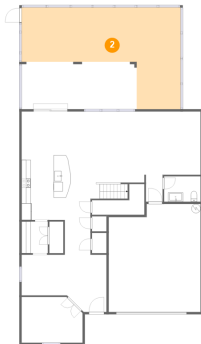
1 Floor 1 - Dining Area



Dimensions: 15'0" x 9'6"
Area: 143 sq. ft
Counted as Living Area:
Yes

Heated: Yes
Finished: Yes
Enclosed: Yes
Contiguous:
Yes
Permitted: Yes
Wet Space: No
Addition: No
Conversion: No

2 Floor 1 - Screened Porch



Dimensions: 34'8" x 22'2"
Area: 509 sq. ft
Counted as Living Area: No

Heated: No
Finished: Yes
Enclosed: No
Contiguous: Yes
Permitted: Yes
Wet Space: No
Addition: No
Conversion: No

**6026 100th Avenue East, Harrison Ranch,
Parrish, Manatee County, Florida, United States,**

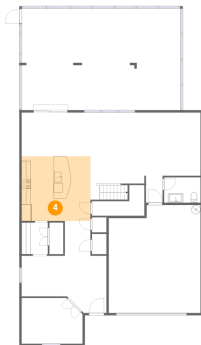
3 Floor 1 - Covered Patio



Dimensions: 25'1" x 10'4"
Area: 258 sq. ft
Counted as Living Area: No

Heated: No
Finished: Yes
Enclosed: No
Contiguous: Yes
Permitted: Yes
Wet Space: No
Addition: No
Conversion: No

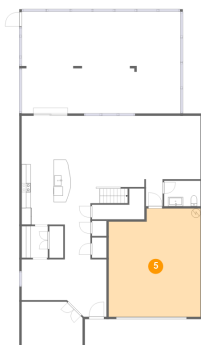
4 Floor 1 - Kitchen



Dimensions: 15'0" x 14'1"
Area: 211 sq. ft
Counted as Living Area: Yes

Heated: Yes
Finished: Yes
Enclosed: Yes
Contiguous: Yes
Permitted: Yes
Wet Space: No
Addition: No
Conversion: No

5 Floor 1 - Garage



Dimensions: 20'0" x 23'6"
Area: 447 sq. ft
Counted as Living Area: No

Heated: No
Finished: No
Enclosed: Yes
Contiguous: Yes
Permitted: Yes
Wet Space: No
Addition: No
Conversion: No

**6026 100th Avenue East, Harrison Ranch,
Parrish, Manatee County, Florida, United States,**

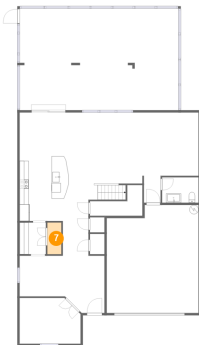
6 Floor 1 - Hall



Dimensions: 5'7" x 7'7"
Area: 42 sq. ft
Counted as Living Area:
Yes

Heated: Yes
Finished: Yes
Enclosed: Yes
Contiguous:
Yes
Permitted: Yes
Wet Space: No
Addition: No
Conversion: No

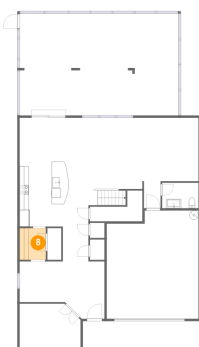
7 Floor 1 - Pantry



Dimensions: 3'0" x 6'11"
Area: 21 sq. ft
Counted as Living Area:
Yes

Heated: Yes
Finished: Yes
Enclosed: Yes
Contiguous:
Yes
Permitted: Yes
Wet Space: No
Addition: No
Conversion: No

8 Floor 1 - Hall



Dimensions: 5'9" x 6'11"
Area: 40 sq. ft
Counted as Living Area:
Yes

Heated: Yes
Finished: Yes
Enclosed: Yes
Contiguous:
Yes
Permitted: Yes
Wet Space: No
Addition: No
Conversion: No

**6026 100th Avenue East, Harrison Ranch,
Parrish, Manatee County, Florida, United States,**

9 Floor 1 - Office



Dimensions: 13'3" x 10'0"
Area: 126 sq. ft
Counted as Living Area:
Yes

Heated: Yes
Finished: Yes
Enclosed: Yes
Contiguous:
Yes
Permitted: Yes
Wet Space: No
Addition: No
Conversion: No

10 Floor 1 - Wc



Dimensions: 7'11" x 5'6"
Area: 44 sq. ft
Counted as Living Area:
Yes

Heated: Yes
Finished: Yes
Enclosed: Yes
Contiguous:
Yes
Permitted: Yes
Wet Space: Yes
Addition: No
Conversion: No

11 Floor 1 - Living Room



Dimensions: 24'0" x 19'8"
Area: 400 sq. ft
Counted as Living Area:
Yes

Heated: Yes
Finished: Yes
Enclosed: Yes
Contiguous:
Yes
Permitted: Yes
Wet Space: No
Addition: No
Conversion: No

6026 100th Avenue East, Harrison Ranch, Parrish, Manatee County, Florida, United States,

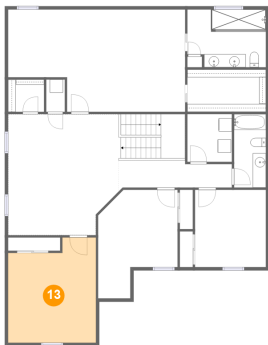
12 Floor 1 - Foyer



Dimensions: 18'6" x 12'6"
Area: 188 sq. ft
Counted as Living Area:
Yes

Heated: Yes
Finished: Yes
Enclosed: Yes
Contiguous:
Yes
Permitted: Yes
Wet Space: No
Addition: No
Conversion: No

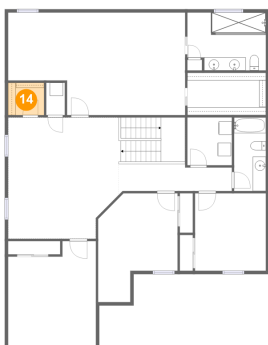
13 Floor 2 - Bedroom



Dimensions: 13'3" x 15'11"
Area: 192 sq. ft
Counted as Living Area:
Yes

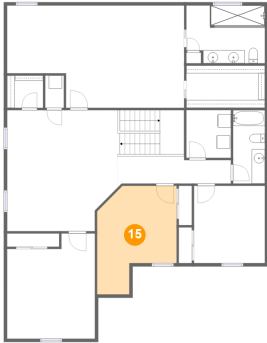
Heated: Yes
Finished: Yes
Enclosed: Yes
Contiguous:
Yes
Permitted: Yes
Wet Space: No
Addition: No
Conversion: No

14 Floor 2 - Room



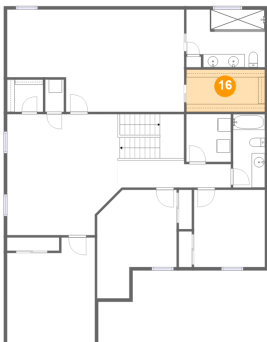
Dimensions: 5'5" x 4'11"
Area: 27 sq. ft
Counted as Living Area:
Yes

Heated: Yes
Finished: Yes
Enclosed: Yes
Contiguous:
Yes
Permitted: Yes
Wet Space: No
Addition: No
Conversion: No

**6026 100th Avenue East, Harrison Ranch,
Parrish, Manatee County, Florida, United States,****15 Floor 2 - Bedroom**

Dimensions: 12'0" x 16'5"
Area: 156 sq. ft
Counted as Living Area:
Yes

Heated: Yes
Finished: Yes
Enclosed: Yes
Contiguous:
Yes
Permitted: Yes
Wet Space: No
Addition: No
Conversion: No

16 Floor 2 - W.i.c.

Dimensions: 11'11" x 6'5"
Area: 76 sq. ft
Counted as Living Area:
Yes

Heated: Yes
Finished: Yes
Enclosed: Yes
Contiguous:
Yes
Permitted: Yes
Wet Space: No
Addition: No
Conversion: No

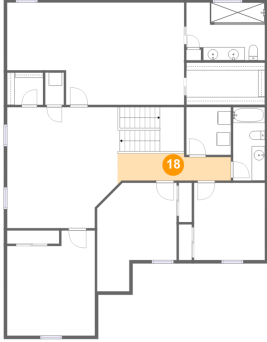
17 Floor 2 - Bath

Dimensions: 11'11" x 8'9"
Area: 99 sq. ft
Counted as Living Area:
Yes

Heated: Yes
Finished: Yes
Enclosed: Yes
Contiguous:
Yes
Permitted: Yes
Wet Space: Yes
Addition: No
Conversion: No

**6026 100th Avenue East, Harrison Ranch,
Parrish, Manatee County, Florida, United States,**

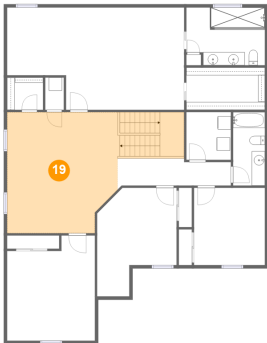
18 Floor 2 - Hall



Dimensions: 17'2" x 4'1"
Area: 66 sq. ft
Counted as Living Area:
Yes

Heated: Yes
Finished: Yes
Enclosed: Yes
Contiguous:
Yes
Permitted: Yes
Wet Space: No
Addition: No
Conversion: No

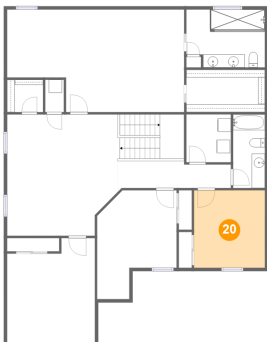
19 Floor 2 - Loft



Dimensions: 17'1" x 18'4"
Area: 360 sq. ft
Counted as Living Area:
Yes

Heated: Yes
Finished: Yes
Enclosed: Yes
Contiguous:
Yes
Permitted: Yes
Wet Space: No
Addition: No
Conversion: No

20 Floor 2 - Bedroom

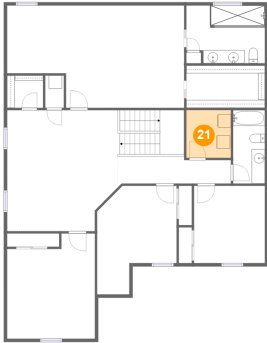


Dimensions: 10'9" x 11'8"
Area: 125 sq. ft
Counted as Living Area:
Yes

Heated: Yes
Finished: Yes
Enclosed: Yes
Contiguous:
Yes
Permitted: Yes
Wet Space: No
Addition: No
Conversion: No

**6026 100th Avenue East, Harrison Ranch,
Parrish, Manatee County, Florida, United States,**

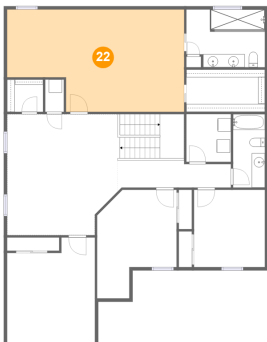
21 Floor 2 - Laundry



Dimensions: 6'9" x 7'3"
Area: 49 sq. ft
Counted as Living Area:
Yes

Heated: Yes
Finished: Yes
Enclosed: Yes
Contiguous:
Yes
Permitted: Yes
Wet Space: No
Addition: No
Conversion: No

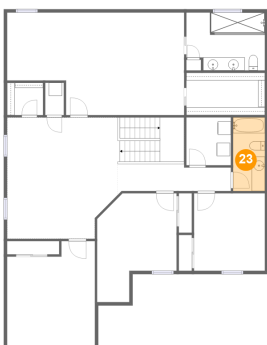
22 Floor 2 - Primary Bedroom



Dimensions: 26'9" x 15'6"
Area: 368 sq. ft
Counted as Living Area:
Yes

Heated: Yes
Finished: Yes
Enclosed: Yes
Contiguous:
Yes
Permitted: Yes
Wet Space: No
Addition: No
Conversion: No

23 Floor 2 - Bath



Dimensions: 4'10" x 11'1"
Area: 53 sq. ft
Counted as Living Area:
Yes

Heated: Yes
Finished: Yes
Enclosed: Yes
Contiguous:
Yes
Permitted: Yes
Wet Space: Yes
Addition: No
Conversion: No