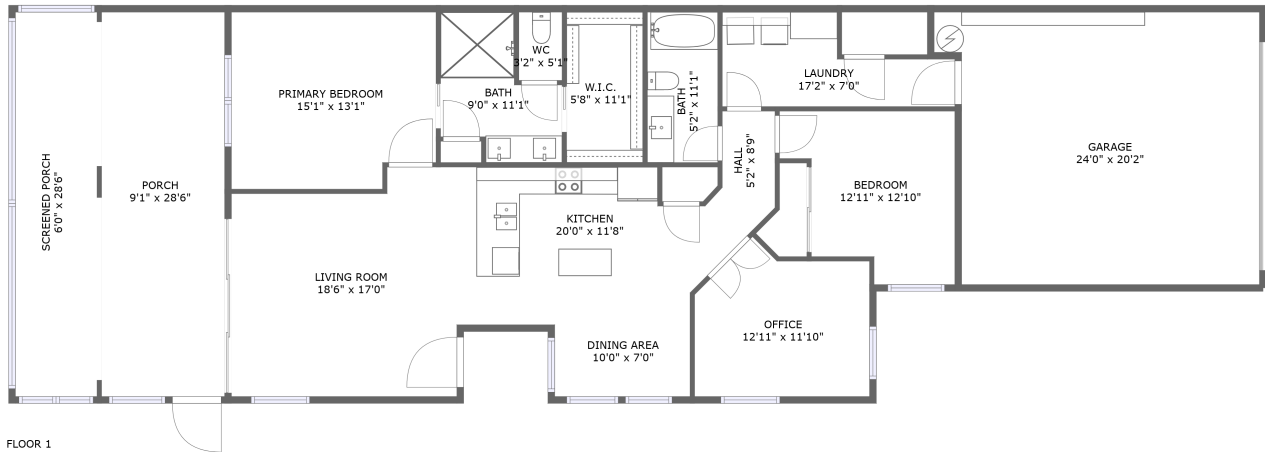



# 9523 Alister Dr, Melbourne, FL, US



## Property summary

 **1** Garages

 **2** Bedrooms

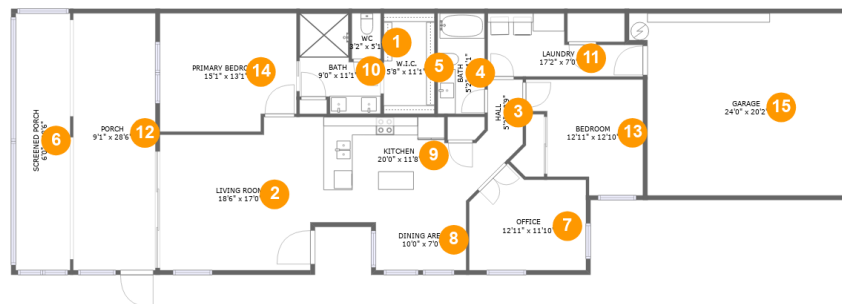
 **2** Bathrooms

 **0** Half baths

 **1** Floors

 **1,504**  
Gross living  
area sqft

 **2,437**  
Total sqft

**9523 Alister Dr, Melbourne, FL, US****Room dimensions****Floor 1****Total sqft: 2437    Living area: 1504**

#		Dimensions	sqft	Counted as living area
1	WC	3'2" x 5'1"	16 sq. ft	Yes
2	Living Room	18'6" x 17'0"	281 sq. ft	Yes
3	Hall	5'2" x 8'9"	30 sq. ft	Yes
4	Bath	5'2" x 11'1"	58 sq. ft	Yes
5	W.I.C.	5'8" x 11'1"	63 sq. ft	Yes
6	Screened Porch	6'0" x 28'6"	181 sq. ft	No
7	Office	12'11" x 11'10"	130 sq. ft	Yes
8	Dining Area	10'0" x 7'0"	70 sq. ft	Yes
9	Kitchen	20'0" x 11'8"	175 sq. ft	Yes
10	Bath	9'0" x 11'1"	74 sq. ft	Yes
11	Laundry	17'2" x 7'0"	90 sq. ft	Yes

**9523 Alister Dr, Melbourne, FL, US**

#		Dimensions	sqft	Counted as living area
12	Porch	9'1" x 28'6"	260 sq. ft	No
13	Bedroom	12'11" x 12'10"	135 sq. ft	Yes
14	Primary Bedroom	15'1" x 13'1"	190 sq. ft	Yes
15	Garage	24'0" x 20'2"	449 sq. ft	No

## 1 Floor 1 - WC



Dimensions: 3'2" x 5'1"  
Area: 16 sq. ft  
Counted as living area: Yes

Heated: Yes  
Finished: Yes  
Enclosed: Yes  
Contiguous: Yes  
Permitted: Yes  
Wet space: Yes  
Addition: No  
Conversion: No

## 2 Floor 1 - Living Room



Dimensions: 18'6" x 17'0"  
Area: 281 sq. ft  
Counted as living area: Yes

Heated: Yes  
Finished: Yes  
Enclosed: Yes  
Contiguous: Yes  
Permitted: Yes  
Wet space: No  
Addition: No  
Conversion: No

# 9523 Alister Dr, Melbourne, FL, US

## 3 Floor 1 - Hall



Dimensions: 5'2" x 8'9"  
Area: 30 sq. ft  
Counted as living area: Yes

Heated: Yes  
Finished: Yes  
Enclosed: Yes  
Contiguous: Yes  
Permitted: Yes  
Wet space: No  
Addition: No  
Conversion: No

## 4 Floor 1 - Bath



Dimensions: 5'2" x 11'1"  
Area: 58 sq. ft  
Counted as living area: Yes

Heated: Yes  
Finished: Yes  
Enclosed: Yes  
Contiguous: Yes  
Permitted: Yes  
Wet space: Yes  
Addition: No  
Conversion: No

## 5 Floor 1 - W.I.C.



Dimensions: 5'8" x 11'1"  
Area: 63 sq. ft  
Counted as living area: Yes

Heated: Yes  
Finished: Yes  
Enclosed: Yes  
Contiguous: Yes  
Permitted: Yes  
Wet space: No  
Addition: No  
Conversion: No

# 9523 Alister Dr, Melbourne, FL, US

## 6 Floor 1 - Screened Porch



Dimensions: 6'0" x 28'6"  
Area: 181 sq. ft  
Counted as living area: No

Heated: No  
Finished: Yes  
Enclosed: No  
Contiguous: Yes  
Permitted: Yes  
Wet space: No  
Addition: No  
Conversion: No

## 7 Floor 1 - Office



Dimensions: 12'11" x 11'10"  
Area: 130 sq. ft  
Counted as living area: Yes

Heated: Yes  
Finished: Yes  
Enclosed: Yes  
Contiguous: Yes  
Permitted: Yes  
Wet space: No  
Addition: No  
Conversion: No

## 8 Floor 1 - Dining Area



Dimensions: 10'0" x 7'0"  
Area: 70 sq. ft  
Counted as living area: Yes

Heated: Yes  
Finished: Yes  
Enclosed: Yes  
Contiguous: Yes  
Permitted: Yes  
Wet space: No  
Addition: No  
Conversion: No

# 9523 Alister Dr, Melbourne, FL, US

## 9 Floor 1 - Kitchen



Dimensions: 20'0" x 11'8"  
Area: 175 sq. ft  
Counted as living area: Yes

Heated: Yes  
Finished: Yes  
Enclosed: Yes  
Contiguous: Yes  
Permitted: Yes  
Wet space: No  
Addition: No  
Conversion: No

## 10 Floor 1 - Bath



Dimensions: 9'0" x 11'1"  
Area: 74 sq. ft  
Counted as living area: Yes

Heated: Yes  
Finished: Yes  
Enclosed: Yes  
Contiguous: Yes  
Permitted: Yes  
Wet space: Yes  
Addition: No  
Conversion: No

## 11 Floor 1 - Laundry



Dimensions: 17'2" x 7'0"  
Area: 90 sq. ft  
Counted as living area: Yes

Heated: Yes  
Finished: Yes  
Enclosed: Yes  
Contiguous: Yes  
Permitted: Yes  
Wet space: No  
Addition: No  
Conversion: No

# 9523 Alister Dr, Melbourne, FL, US

## 12 Floor 1 - Porch



Dimensions: 9'1" x 28'6"  
Area: 260 sq. ft  
Counted as living area: No

Heated: No  
Finished: Yes  
Enclosed: No  
Contiguous: Yes  
Permitted: Yes  
Wet space: No  
Addition: No  
Conversion: No

## 13 Floor 1 - Bedroom



Dimensions: 12'11" x 12'10"  
Area: 135 sq. ft  
Counted as living area: Yes

Heated: Yes  
Finished: Yes  
Enclosed: Yes  
Contiguous: Yes  
Permitted: Yes  
Wet space: No  
Addition: No  
Conversion: No

## 14 Floor 1 - Primary Bedroom



Dimensions: 15'1" x 13'1"  
Area: 190 sq. ft  
Counted as living area: Yes

Heated: Yes  
Finished: Yes  
Enclosed: Yes  
Contiguous: Yes  
Permitted: Yes  
Wet space: No  
Addition: No  
Conversion: No



**15** Floor 1 - Garage



**Dimensions:** 24'0" x 20'2"  
**Area:** 449 sq. ft  
**Counted as living area:** No

**Heated:** No  
**Finished:** No  
**Enclosed:** Yes  
**Contiguous:** Yes  
**Permitted:** Yes  
**Wet space:** No  
**Addition:** No  
**Conversion:** No