

Home report

2640 Union Road, Lawrence, Jefferson County, Kansas, United States, 66044



Total Area: 3109 sq. ft

Below Ground: 1126 sq. ft, Floor 2: 1313 sq. ft, Floor 3: 670 sq. ft

Excluded: Utility 104 sq. ft, Garage 591 sq. ft, Outdoor Deck 347 sq. ft, Fireplace 15 sq. ft, Walls: 258 sq. ft

Property summary

**3** Floors

**3** Bedrooms

**3** Bathrooms

Home report

2640 Union Road, Lawrence, Jefferson County, Kansas, United States, 66044



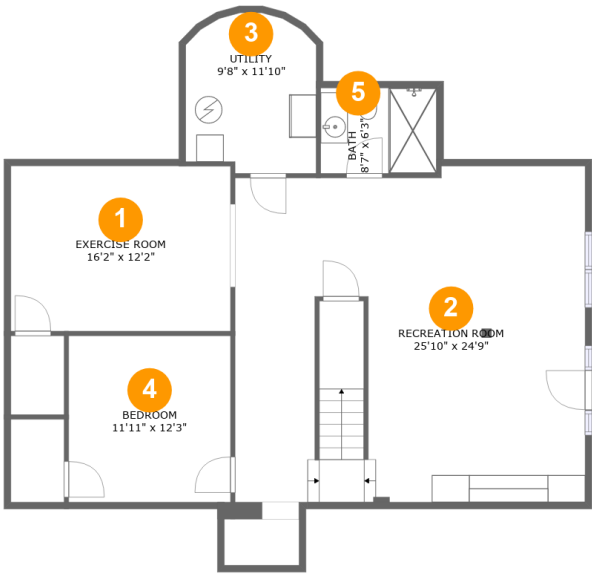
1
Half baths



1
Garages

Home report

2640 Union Road, Lawrence, Jefferson County, Kansas, United States, 66044



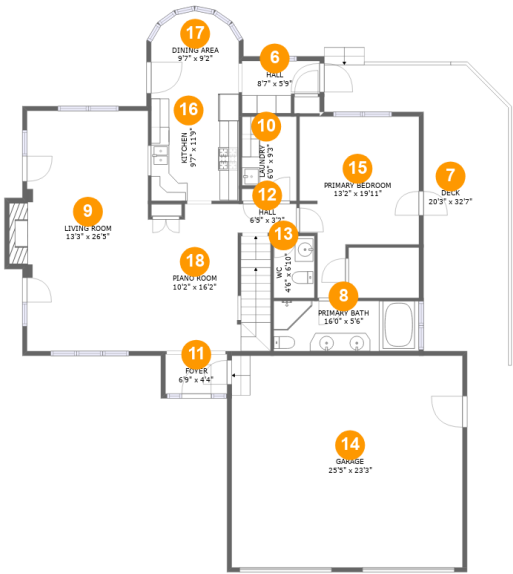
Room dimensions

Floor 1 Below ground Total:1126sqft Excluded: 104sqft

#		Max Dimensions	sqft	Included
1	Exercise Room	16'2" x 12'2"	197 sq. ft	Yes
2	Recreation Room	25'10" x 24'9"	626 sq. ft	Yes
3	Utility	9'8" x 11'10"	104 sq. ft	No
4	Bedroom	11'11" x 12'3"	146 sq. ft	Yes
5	Bath	8'7" x 6'3"	54 sq. ft	Yes

Home report

2640 Union Road, Lawrence, Jefferson County, Kansas, United States, 66044



Room dimensions

Floor 2 Total:1313sqft Excluded: 953sqft

#		Max Dimensions	sqft	Included
6	Hall	8'7" x 5'9"	43 sq. ft	Yes
7	Deck	20'3" x 32'7"	347 sq. ft	No
8	Primary Bath	16'0" x 5'6"	88 sq. ft	Yes
9	Living Room	13'3" x 26'5"	365 sq. ft	Yes
10	Laundry	6'0" x 9'3"	52 sq. ft	Yes
11	Foyer	6'9" x 4'4"	30 sq. ft	Yes
12	Hall	6'5" x 3'2"	20 sq. ft	Yes
13	WC	4'6" x 6'10"	31 sq. ft	Yes
14	Garage	25'5" x 23'3"	591 sq. ft	No
15	Primary Bedroom	13'2" x 19'11"	200 sq. ft	Yes
16	Kitchen	9'7" x 11'9"	115 sq. ft	Yes

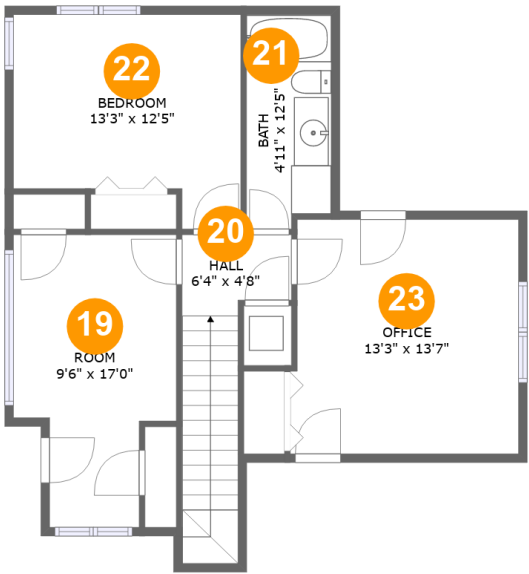
Home report

2640 Union Road, Lawrence, Jefferson County, Kansas, United States, 66044

#		Max Dimensions	sqft	Included
17	Dining Area	9'7" x 9'2"	79 sq. ft	Yes
18	Piano Room	10'2" x 16'2"	196 sq. ft	Yes

Home report

2640 Union Road, Lawrence, Jefferson County, Kansas, United States, 66044

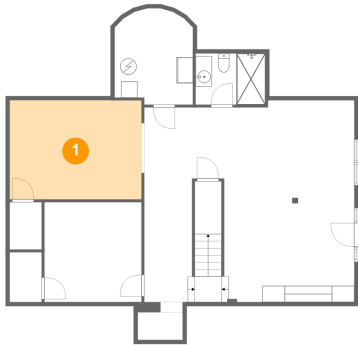


Room dimensions

Floor 3 Total:670sqft Excluded: 0sqft

#		Max Dimensions	sqft	Included
19	Room	9'6" x 17'0"	134 sq. ft	Yes
20	Hall	6'4" x 4'8"	74 sq. ft	Yes
21	Bath	4'11" x 12'5"	59 sq. ft	Yes
22	Bedroom	13'3" x 12'5"	142 sq. ft	Yes
23	Office	13'3" x 13'7"	177 sq. ft	Yes

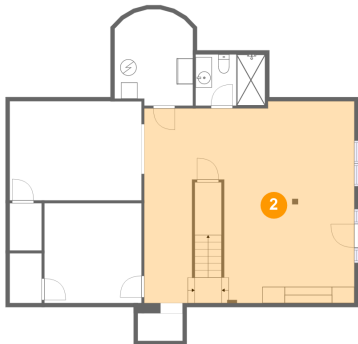
1 Floor 1 - Exercise Room



Max Dimensions: 16'2" x 12'2"
Calculated Area: 197 sq. ft
Included: Yes

Heated: Yes
Finished: Yes
Enclosed: Yes
Contiguous: Yes
Permitted: Yes
Wet space: No
Addition: No
Conversion: No

2 Floor 1 - Recreation Room

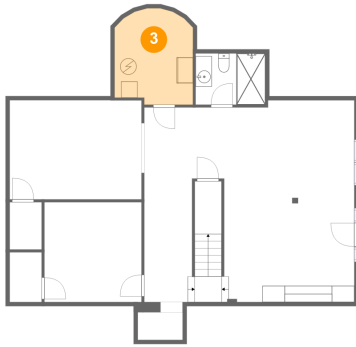


Max Dimensions: 25'10" x 24'9"
Calculated Area: 626 sq. ft
Included: Yes

Heated: Yes
Finished: Yes
Enclosed: Yes
Contiguous: Yes
Permitted: Yes
Wet space: No
Addition: No
Conversion: No

2640 Union Road, Lawrence, Jefferson County, Kansas, United States, 66044

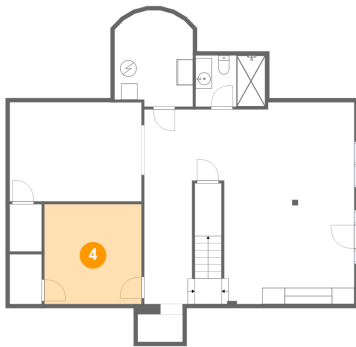
3 Floor 1 - Utility



Max Dimensions: 9'8" x 11'10"
Calculated Area: 104 sq. ft
Included: No

Heated: Yes
Finished: No
Enclosed: Yes
Contiguous: Yes
Permitted: Yes
Wet space: No
Addition: No
Conversion: No

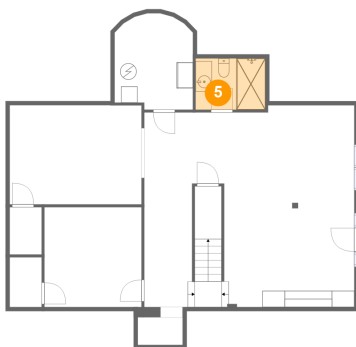
4 Floor 1 - Bedroom



Max Dimensions: 11'11" x 12'3"
Calculated Area: 146 sq. ft
Included: Yes

Heated: Yes
Finished: Yes
Enclosed: Yes
Contiguous: Yes
Permitted: Yes
Wet space: No
Addition: No
Conversion: No

5 Floor 1 - Bath

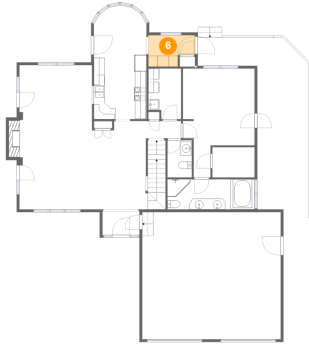


Max Dimensions: 8'7" x 6'3"
Calculated Area: 54 sq. ft
Included: Yes

Heated: Yes
Finished: Yes
Enclosed: Yes
Contiguous: Yes
Permitted: Yes
Wet space: Yes
Addition: No
Conversion: No

2640 Union Road, Lawrence, Jefferson County, Kansas, United States, 66044

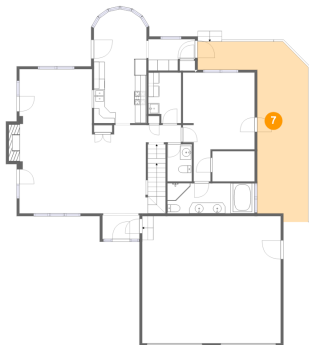
6 Floor 2 - Hall



Max Dimensions: 8'7" x 5'9"
Calculated Area: 43 sq. ft
Included: Yes

Heated: Yes
Finished: Yes
Enclosed: Yes
Contiguous: Yes
Permitted: Yes
Wet space: No
Addition: No
Conversion: No

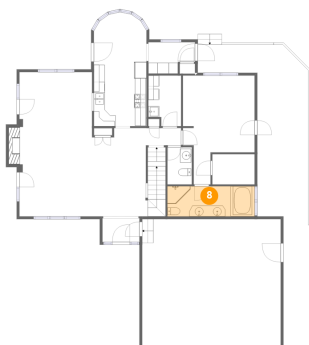
7 Floor 2 - Deck



Max Dimensions: 20'3" x 32'7"
Calculated Area: 347 sq. ft
Included: No

Heated: No
Finished: Yes
Enclosed: No
Contiguous: Yes
Permitted: Yes
Wet space: No
Addition: No
Conversion: No

8 Floor 2 - Primary Bath

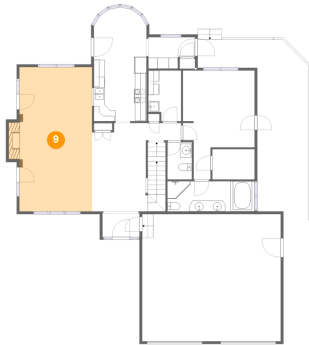


Max Dimensions: 16'0" x 5'6"
Calculated Area: 88 sq. ft
Included: Yes

Heated: Yes
Finished: Yes
Enclosed: Yes
Contiguous: Yes
Permitted: Yes
Wet space: Yes
Addition: No
Conversion: No

2640 Union Road, Lawrence, Jefferson County, Kansas, United States, 66044

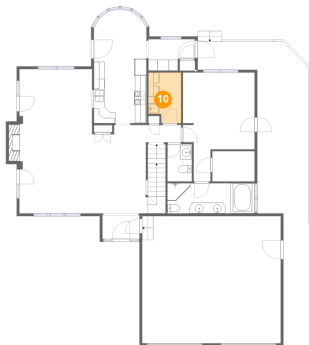
9 Floor 2 - Living Room



Max Dimensions: 13'3" x 26'5"
Calculated Area: 365 sq. ft
Included: Yes

Heated: Yes
Finished: Yes
Enclosed: Yes
Contiguous: Yes
Permitted: Yes
Wet space: No
Addition: No
Conversion: No

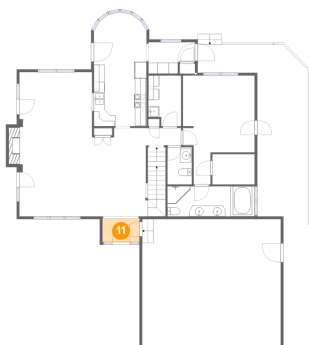
10 Floor 2 - Laundry



Max Dimensions: 6'0" x 9'3"
Calculated Area: 52 sq. ft
Included: Yes

Heated: Yes
Finished: Yes
Enclosed: Yes
Contiguous: Yes
Permitted: Yes
Wet space: No
Addition: No
Conversion: No

11 Floor 2 - Foyer



Max Dimensions: 6'9" x 4'4"
Calculated Area: 30 sq. ft
Included: Yes

Heated: Yes
Finished: Yes
Enclosed: Yes
Contiguous: Yes
Permitted: Yes
Wet space: No
Addition: No
Conversion: No

12 Floor 2 - Hall



Max Dimensions: 6'5" x 3'2"
Calculated Area: 20 sq. ft
Included: Yes

Heated: Yes
Finished: Yes
Enclosed: Yes
Contiguous: Yes
Permitted: Yes
Wet space: No
Addition: No
Conversion: No

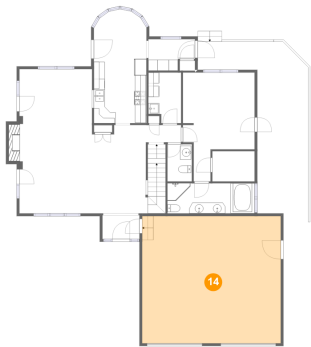
13 Floor 2 - WC



Max Dimensions: 4'6" x 6'10"
Calculated Area: 31 sq. ft
Included: Yes

Heated: Yes
Finished: Yes
Enclosed: Yes
Contiguous: Yes
Permitted: Yes
Wet space: Yes
Addition: No
Conversion: No

14 Floor 2 - Garage



Max Dimensions: 25'5" x 23'3"
Calculated Area: 591 sq. ft
Included: No

Heated: No
Finished: No
Enclosed: Yes
Contiguous: Yes
Permitted: Yes
Wet space: No
Addition: No
Conversion: No

2640 Union Road, Lawrence, Jefferson County, Kansas, United States, 66044

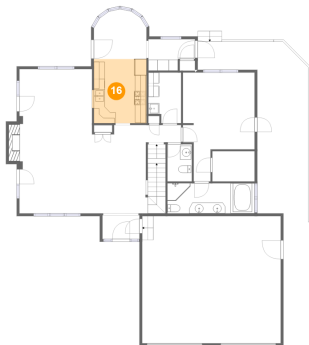
15 Floor 2 - Primary Bedroom



Max Dimensions: 13'2" x 19'11"
Calculated Area: 200 sq. ft
Included: Yes

Heated: Yes
Finished: Yes
Enclosed: Yes
Contiguous: Yes
Permitted: Yes
Wet space: No
Addition: No
Conversion: No

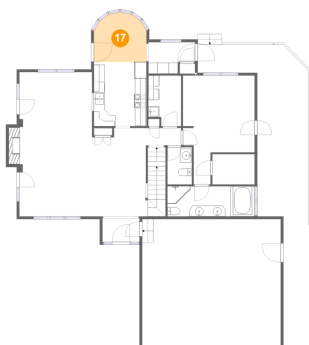
16 Floor 2 - Kitchen



Max Dimensions: 9'7" x 11'9"
Calculated Area: 115 sq. ft
Included: Yes

Heated: Yes
Finished: Yes
Enclosed: Yes
Contiguous: Yes
Permitted: Yes
Wet space: No
Addition: No
Conversion: No

17 Floor 2 - Dining Area

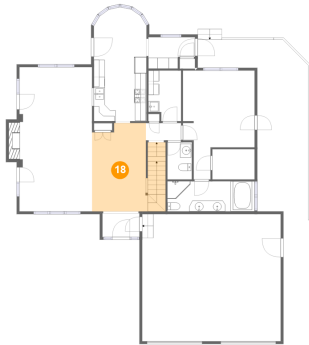


Max Dimensions: 9'7" x 9'2"
Calculated Area: 79 sq. ft
Included: Yes

Heated: Yes
Finished: Yes
Enclosed: Yes
Contiguous: Yes
Permitted: Yes
Wet space: No
Addition: No
Conversion: No

2640 Union Road, Lawrence, Jefferson County, Kansas, United States, 66044

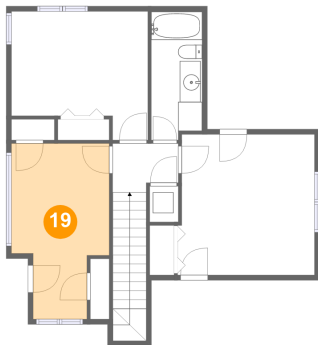
18 Floor 2 - Piano Room



Max Dimensions: 10'2" x 16'2"
Calculated Area: 196 sq. ft
Included: Yes

Heated: Yes
Finished: Yes
Enclosed: Yes
Contiguous: Yes
Permitted: Yes
Wet space: No
Addition: No
Conversion: No

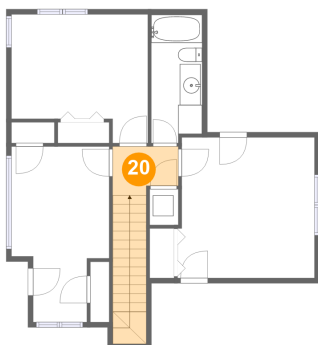
19 Floor 3 - Room



Max Dimensions: 9'6" x 17'0"
Calculated Area: 134 sq. ft
Included: Yes

Heated: Yes
Finished: Yes
Enclosed: Yes
Contiguous: Yes
Permitted: Yes
Wet space: No
Addition: No
Conversion: No

20 Floor 3 - Hall

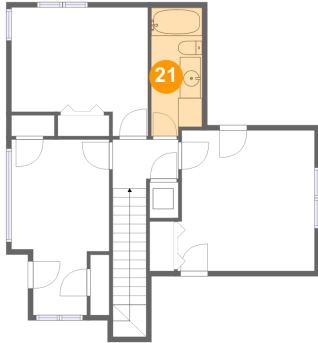


Max Dimensions: 6'4" x 4'8"
Calculated Area: 74 sq. ft
Included: Yes

Heated: Yes
Finished: Yes
Enclosed: Yes
Contiguous: Yes
Permitted: Yes
Wet space: No
Addition: No
Conversion: No

2640 Union Road, Lawrence, Jefferson County, Kansas, United States, 66044

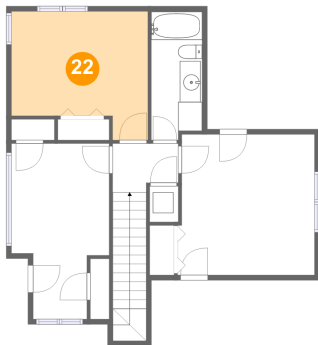
21 Floor 3 - Bath



Max Dimensions: 4'11" x 12'5"
Calculated Area: 59 sq. ft
Included: Yes

Heated: Yes
Finished: Yes
Enclosed: Yes
Contiguous: Yes
Permitted: Yes
Wet space: Yes
Addition: No
Conversion: No

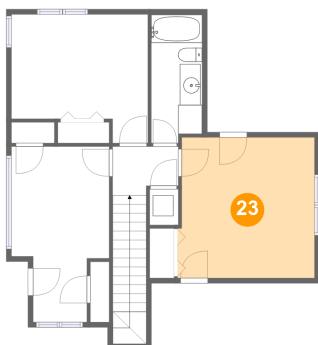
22 Floor 3 - Bedroom



Max Dimensions: 13'3" x 12'5"
Calculated Area: 142 sq. ft
Included: Yes

Heated: Yes
Finished: Yes
Enclosed: Yes
Contiguous: Yes
Permitted: Yes
Wet space: No
Addition: No
Conversion: No

23 Floor 3 - Office



Max Dimensions: 13'3" x 13'7"
Calculated Area: 177 sq. ft
Included: Yes

Heated: Yes
Finished: Yes
Enclosed: Yes
Contiguous: Yes
Permitted: Yes
Wet space: No
Addition: No
Conversion: No