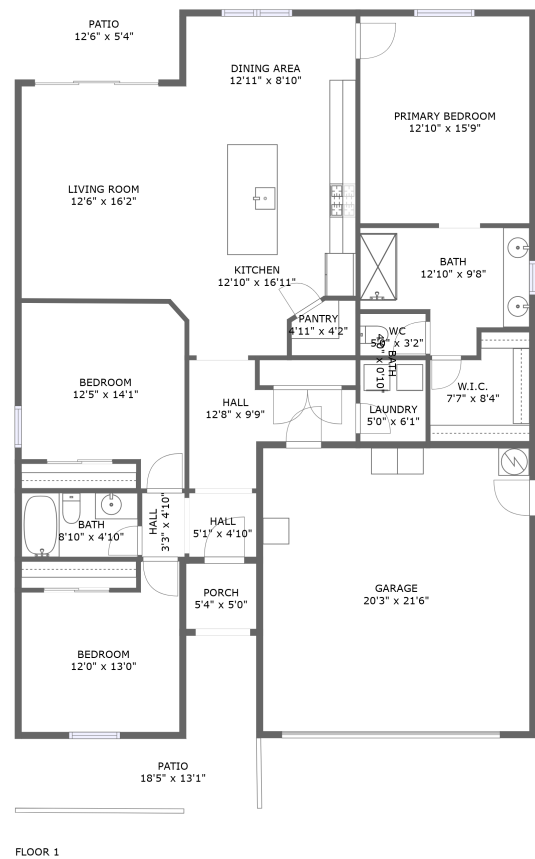




Home report


640 Wood Crest Ave, Madera, Madera County, California, United States, 93636





Property summary


 **1** Garages


 **3** Bedrooms

 **2** Bathrooms

 **0** Half baths

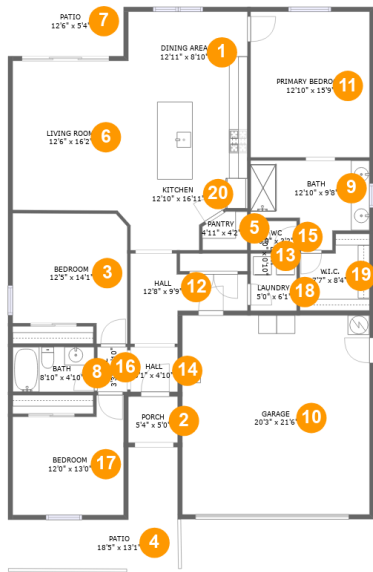
 **1** Floors

 **1,593** Gross living area sqft

 **2,289** Total sqft

Home report

640 Wood Crest Ave, Madera, Madera County, California, United States, 93636



Room dimensions

Floor 1

Total sqft: 2289 Living area: 1593

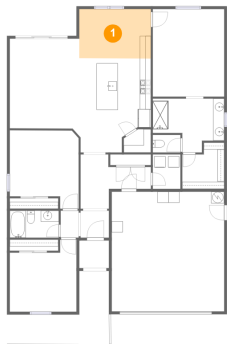
#		Dimensions	sqft	Counted as living area
1	Dining Area	12'11" x 8'10"	114 sq. ft	Yes
2	Porch	5'4" x 5'0"	27 sq. ft	No
3	Bedroom	12'5" x 14'1"	154 sq. ft	Yes
4	Patio	18'5" x 13'1"	139 sq. ft	No
5	Pantry	4'11" x 4'2"	18 sq. ft	Yes
6	Living Room	12'6" x 16'2"	202 sq. ft	Yes
7	Patio	12'6" x 5'4"	67 sq. ft	No
8	Bath	8'10" x 4'10"	43 sq. ft	Yes
9	Bath	12'10" x 9'8"	98 sq. ft	Yes
10	Garage	20'3" x 21'6"	436 sq. ft	No
11	Primary Bedroom	12'10" x 15'9"	202 sq. ft	Yes

Home report

640 Wood Crest Ave, Madera, Madera County, California, United States, 93636

#		Dimensions	sqft	Counted as living area
12	Hall	12'8" x 9'9"	79 sq. ft	Yes
13	Bath	4'0" x 0'10"	4 sq. ft	Yes
14	Hall	5'1" x 4'10"	25 sq. ft	Yes
15	WC	5'0" x 3'2"	16 sq. ft	Yes
16	Hall	3'3" x 4'10"	16 sq. ft	Yes
17	Bedroom	12'0" x 13'0"	134 sq. ft	Yes
18	Laundry	5'0" x 6'1"	27 sq. ft	Yes
19	W.I.C.	7'7" x 8'4"	55 sq. ft	Yes
20	Kitchen	12'10" x 16'11"	197 sq. ft	Yes

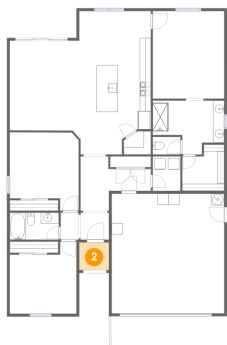
1 Floor 1 - Dining Area



Dimensions: 12'11" x 8'10"
Area: 114 sq. ft
Counted as living area: Yes

Heated: Yes
Finished: Yes
Enclosed: Yes
Contiguous: Yes
Permitted: Yes
Wet space: No
Addition: No
Conversion: No

2 Floor 1 - Porch



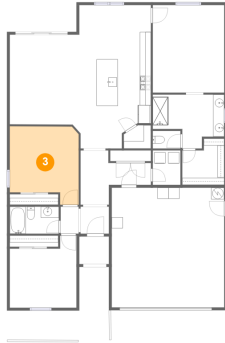
Dimensions: 5'4" x 5'0"
Area: 27 sq. ft
Counted as living area: No

Heated: No
Finished: Yes
Enclosed: No
Contiguous: Yes
Permitted: Yes
Wet space: No
Addition: No
Conversion: No

Home report

640 Wood Crest Ave, Madera, Madera County, California, United States, 93636

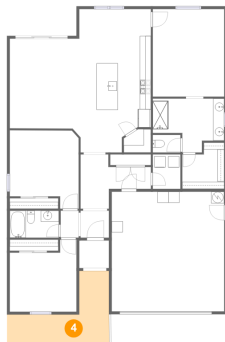
3 Floor 1 - Bedroom



Dimensions: 12'5" x 14'1"
Area: 154 sq. ft
Counted as living area: Yes

Heated: Yes
Finished: Yes
Enclosed: Yes
Contiguous: Yes
Permitted: Yes
Wet space: No
Addition: No
Conversion: No

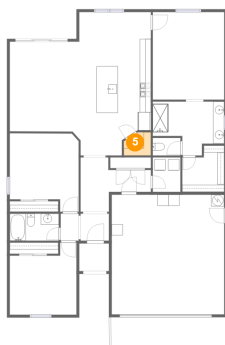
4 Floor 1 - Patio



Dimensions: 18'5" x 13'1"
Area: 139 sq. ft
Counted as living area: No

Heated: No
Finished: Yes
Enclosed: No
Contiguous: Yes
Permitted: Yes
Wet space: No
Addition: No
Conversion: No

5 Floor 1 - Pantry

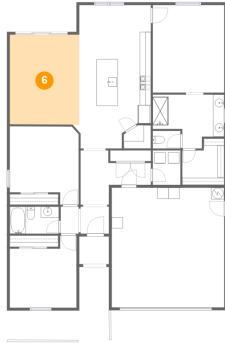


Dimensions: 4'11" x 4'2"
Area: 18 sq. ft
Counted as living area: Yes

Heated: Yes
Finished: Yes
Enclosed: Yes
Contiguous: Yes
Permitted: Yes
Wet space: No
Addition: No
Conversion: No

640 Wood Crest Ave, Madera, Madera County, California, United States, 93636

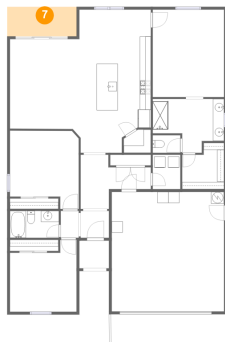
6 Floor 1 - Living Room



Dimensions: 12'6" x 16'2"
Area: 202 sq. ft
Counted as living area: Yes

Heated: Yes
Finished: Yes
Enclosed: Yes
Contiguous: Yes
Permitted: Yes
Wet space: No
Addition: No
Conversion: No

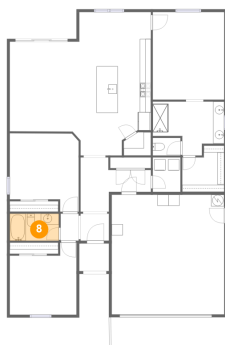
7 Floor 1 - Patio



Dimensions: 12'6" x 5'4"
Area: 67 sq. ft
Counted as living area: No

Heated: No
Finished: Yes
Enclosed: No
Contiguous: Yes
Permitted: Yes
Wet space: No
Addition: No
Conversion: No

8 Floor 1 - Bath

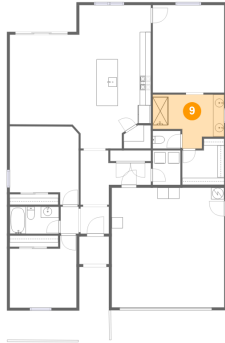


Dimensions: 8'10" x 4'10"
Area: 43 sq. ft
Counted as living area: Yes

Heated: Yes
Finished: Yes
Enclosed: Yes
Contiguous: Yes
Permitted: Yes
Wet space: Yes
Addition: No
Conversion: No

640 Wood Crest Ave, Madera, Madera County, California, United States, 93636

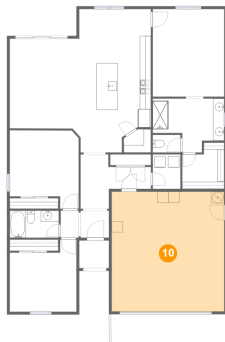
9 Floor 1 - Bath



Dimensions: 12'10" x 9'8"
Area: 98 sq. ft
Counted as living area: Yes

Heated: Yes
Finished: Yes
Enclosed: Yes
Contiguous: Yes
Permitted: Yes
Wet space: Yes
Addition: No
Conversion: No

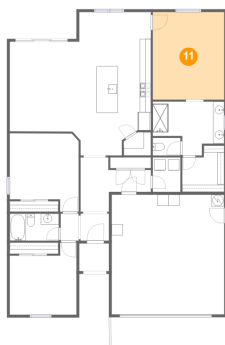
10 Floor 1 - Garage



Dimensions: 20'3" x 21'6"
Area: 436 sq. ft
Counted as living area: No

Heated: No
Finished: No
Enclosed: Yes
Contiguous: Yes
Permitted: Yes
Wet space: No
Addition: No
Conversion: No

11 Floor 1 - Primary Bedroom

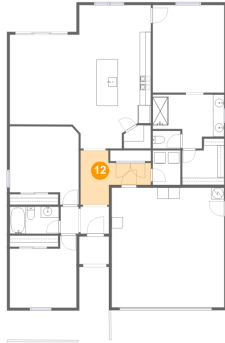


Dimensions: 12'10" x 15'9"
Area: 202 sq. ft
Counted as living area: Yes

Heated: Yes
Finished: Yes
Enclosed: Yes
Contiguous: Yes
Permitted: Yes
Wet space: No
Addition: No
Conversion: No

640 Wood Crest Ave, Madera, Madera County, California, United States, 93636

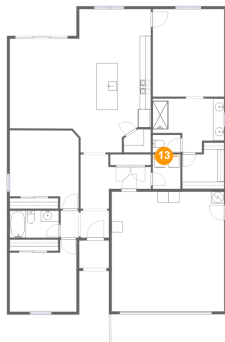
12 Floor 1 - Hall



Dimensions: 12'8" x 9'9"
Area: 79 sq. ft
Counted as living area: Yes

Heated: Yes
Finished: Yes
Enclosed: Yes
Contiguous: Yes
Permitted: Yes
Wet space: No
Addition: No
Conversion: No

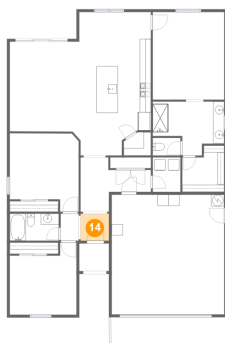
13 Floor 1 - Bath



Dimensions: 4'0" x 0'10"
Area: 4 sq. ft
Counted as living area: Yes

Heated: Yes
Finished: Yes
Enclosed: Yes
Contiguous: Yes
Permitted: Yes
Wet space: Yes
Addition: No
Conversion: No

14 Floor 1 - Hall

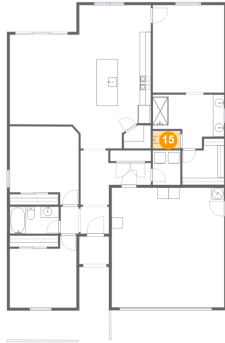


Dimensions: 5'1" x 4'10"
Area: 25 sq. ft
Counted as living area: Yes

Heated: Yes
Finished: Yes
Enclosed: Yes
Contiguous: Yes
Permitted: Yes
Wet space: No
Addition: No
Conversion: No

640 Wood Crest Ave, Madera, Madera County, California, United States, 93636

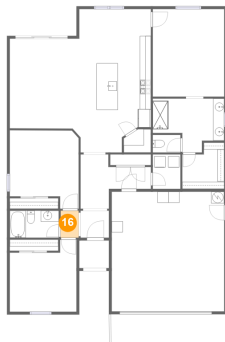
15 Floor 1 - WC



Dimensions: 5'0" x 3'2"
Area: 16 sq. ft
Counted as living area: Yes

Heated: Yes
Finished: Yes
Enclosed: Yes
Contiguous: Yes
Permitted: Yes
Wet space: Yes
Addition: No
Conversion: No

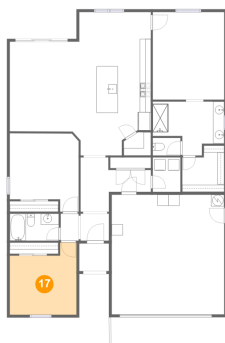
16 Floor 1 - Hall



Dimensions: 3'3" x 4'10"
Area: 16 sq. ft
Counted as living area: Yes

Heated: Yes
Finished: Yes
Enclosed: Yes
Contiguous: Yes
Permitted: Yes
Wet space: No
Addition: No
Conversion: No

17 Floor 1 - Bedroom

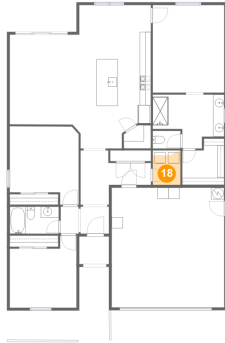


Dimensions: 12'0" x 13'0"
Area: 134 sq. ft
Counted as living area: Yes

Heated: Yes
Finished: Yes
Enclosed: Yes
Contiguous: Yes
Permitted: Yes
Wet space: No
Addition: No
Conversion: No

640 Wood Crest Ave, Madera, Madera County, California, United States, 93636

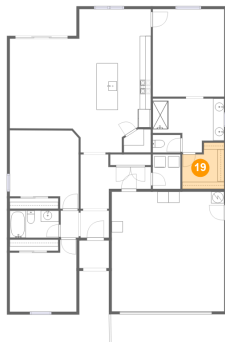
18 Floor 1 - Laundry



Dimensions: 5'0" x 6'1"
Area: 27 sq. ft
Counted as living area: Yes

Heated: Yes
Finished: Yes
Enclosed: Yes
Contiguous: Yes
Permitted: Yes
Wet space: No
Addition: No
Conversion: No

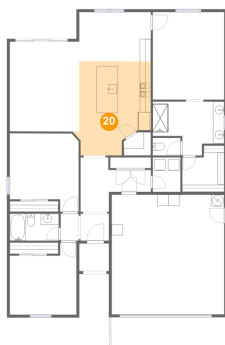
19 Floor 1 - W.I.C.



Dimensions: 7'7" x 8'4"
Area: 55 sq. ft
Counted as living area: Yes

Heated: Yes
Finished: Yes
Enclosed: Yes
Contiguous: Yes
Permitted: Yes
Wet space: No
Addition: No
Conversion: No

20 Floor 1 - Kitchen



Dimensions: 12'10" x 16'11"
Area: 197 sq. ft
Counted as living area: Yes

Heated: Yes
Finished: Yes
Enclosed: Yes
Contiguous: Yes
Permitted: Yes
Wet space: No
Addition: No
Conversion: No