



Home report


9904 Dellcastle Road, Montgomery Village, Montgomery County, Maryland, United States, 20886




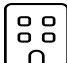
Property summary


 **1** Garages


 **5** Bedrooms

 **3** Bathrooms

 **0** Half baths

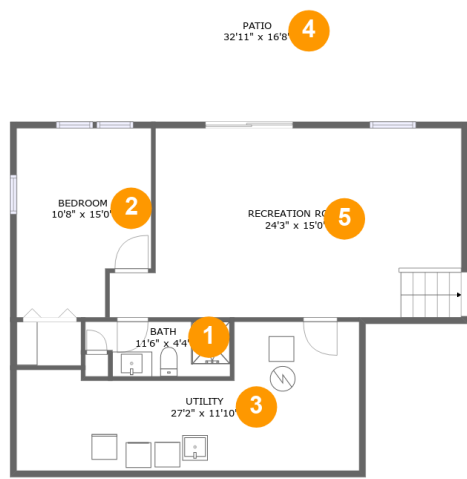
 **2** Floors

 **2,924** Gross living area sqft

 **4,282** Total sqft

Home report

9904 Dellcastle Road, Montgomery Village, Montgomery County, Maryland, United States, 20886



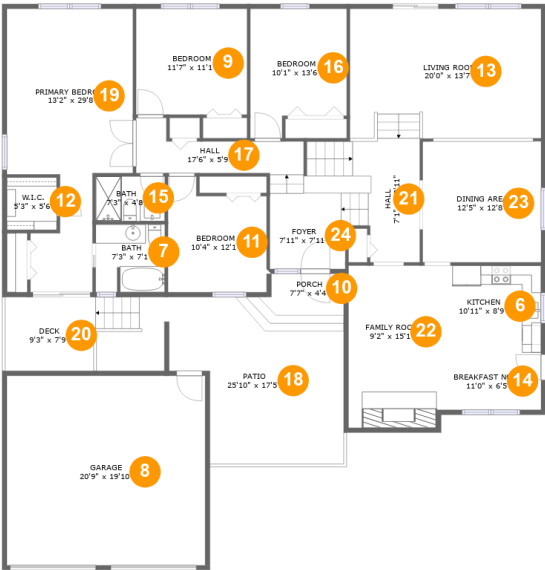
Room dimensions

Floor 1 Total sqft: 1405 Living area: 922

#		Dimensions	sqft	Counted as living area
1	Bath	11'6" x 4'4"	45 sq. ft	Yes
2	Bedroom	10'8" x 15'0"	146 sq. ft	Yes
3	Utility	27'2" x 11'10"	244 sq. ft	Yes
4	Patio	32'11" x 16'8"	483 sq. ft	No
5	Recreation Room	24'3" x 15'0"	377 sq. ft	Yes

Home report

9904 Dellcastle Road, Montgomery Village, Montgomery County, Maryland, United States, 20886



Room dimensions

Floor 2 Total sqft: 2877 Living area: 2002

#		Dimensions	sqft	Counted as living area
6	Kitchen	10'11" x 8'9"	95 sq. ft	Yes
7	Bath	7'3" x 7'1"	50 sq. ft	Yes
8	Garage	20'9" x 19'10"	411 sq. ft	No
9	Bedroom	11'7" x 11'1"	128 sq. ft	Yes
10	Porch	7'7" x 4'4"	46 sq. ft	No
11	Bedroom	10'4" x 12'1"	110 sq. ft	Yes
12	W.I.C.	5'3" x 5'6"	29 sq. ft	Yes
13	Living Room	20'0" x 13'7"	271 sq. ft	Yes
14	Breakfast Nook	11'0" x 6'5"	70 sq. ft	Yes
15	Bath	7'3" x 4'8"	34 sq. ft	Yes
16	Bedroom	10'1" x 13'6"	121 sq. ft	Yes

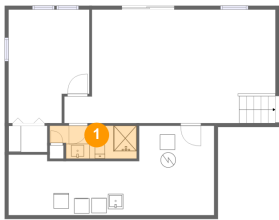
Home report

9904 Dellcastle Road, Montgomery Village, Montgomery County, Maryland, United States, 20886

#		Dimensions	sqft	Counted as living area
17	Hall	17'6" x 5'9"	73 sq. ft	Yes
18	Patio	25'10" x 17'5"	305 sq. ft	No
19	Primary Bedroom	13'2" x 29'8"	289 sq. ft	Yes
20	Deck	9'3" x 7'9"	72 sq. ft	No
21	Hall	7'1" x 12'11"	114 sq. ft	Yes
22	Family Room	9'2" x 15'1"	156 sq. ft	Yes
23	Dining Area	12'5" x 12'8"	160 sq. ft	Yes
24	Foyer	7'11" x 7'11"	63 sq. ft	Yes

9904 Dellcastle Road, Montgomery Village, Montgomery County, Maryland, United States, 20886

1 Floor 1 - Bath



Dimensions: 11'6" x 4'4"
Area: 45 sq. ft
Counted as living area: Yes

Heated: Yes
Finished: Yes
Enclosed: Yes
Contiguous: Yes
Permitted: Yes
Wet space: Yes
Addition: No
Conversion: No

2 Floor 1 - Bedroom

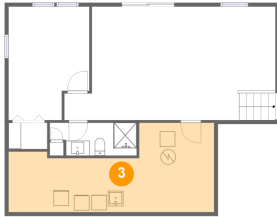


Dimensions: 10'8" x 15'0"
Area: 146 sq. ft
Counted as living area: Yes

Heated: Yes
Finished: Yes
Enclosed: Yes
Contiguous: Yes
Permitted: Yes
Wet space: No
Addition: No
Conversion: No

9904 Dellcastle Road, Montgomery Village, Montgomery
County, Maryland, United States, 20886

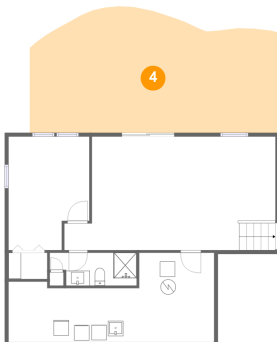
3 Floor 1 - Utility



Dimensions: 27'2" x 11'10"
Area: 244 sq. ft
Counted as living area: Yes

Heated: Yes
Finished: Yes
Enclosed: Yes
Contiguous: Yes
Permitted: Yes
Wet space: No
Addition: No
Conversion: No

4 Floor 1 - Patio



Dimensions: 32'11" x 16'8"
Area: 483 sq. ft
Counted as living area: No

Heated: No
Finished: Yes
Enclosed: No
Contiguous: Yes
Permitted: Yes
Wet space: No
Addition: No
Conversion: No

5 Floor 1 - Recreation Room



Dimensions: 24'3" x 15'0"
Area: 377 sq. ft
Counted as living area: Yes

Heated: Yes
Finished: Yes
Enclosed: Yes
Contiguous: Yes
Permitted: Yes
Wet space: No
Addition: No
Conversion: No

6 Floor 2 - Kitchen



Dimensions: 10'11" x 8'9"
Area: 95 sq. ft
Counted as living area: Yes

Heated: Yes
Finished: Yes
Enclosed: Yes
Contiguous: Yes
Permitted: Yes
Wet space: No
Addition: No
Conversion: No

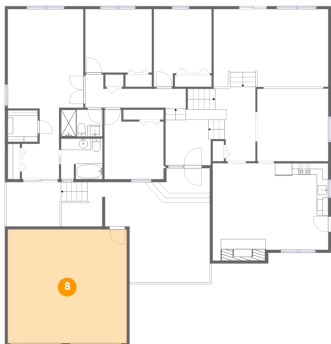
7 Floor 2 - Bath



Dimensions: 7'3" x 7'1"
Area: 50 sq. ft
Counted as living area: Yes

Heated: Yes
Finished: Yes
Enclosed: Yes
Contiguous: Yes
Permitted: Yes
Wet space: Yes
Addition: No
Conversion: No

8 Floor 2 - Garage

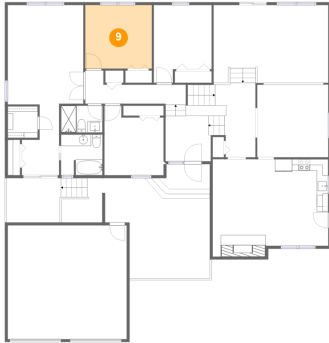


Dimensions: 20'9" x 19'10"
Area: 411 sq. ft
Counted as living area: No

Heated: No
Finished: No
Enclosed: Yes
Contiguous: Yes
Permitted: Yes
Wet space: No
Addition: No
Conversion: No

9904 Dellcastle Road, Montgomery Village, Montgomery
County, Maryland, United States, 20886

9 Floor 2 - Bedroom



Dimensions: 11'7" x 11'1"
Area: 128 sq. ft
Counted as living area: Yes

Heated: Yes
Finished: Yes
Enclosed: Yes
Contiguous: Yes
Permitted: Yes
Wet space: No
Addition: No
Conversion: No

10 Floor 2 - Porch



Dimensions: 7'7" x 4'4"
Area: 46 sq. ft
Counted as living area: No

Heated: No
Finished: Yes
Enclosed: No
Contiguous: Yes
Permitted: Yes
Wet space: No
Addition: No
Conversion: No

11 Floor 2 - Bedroom

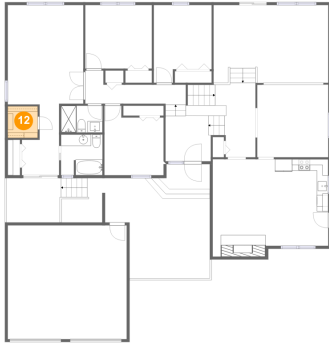


Dimensions: 10'4" x 12'1"
Area: 110 sq. ft
Counted as living area: Yes

Heated: Yes
Finished: Yes
Enclosed: Yes
Contiguous: Yes
Permitted: Yes
Wet space: No
Addition: No
Conversion: No

9904 Dellcastle Road, Montgomery Village, Montgomery
County, Maryland, United States, 20886

12 Floor 2 - W.I.C.



Dimensions: 5'3" x 5'6"
Area: 29 sq. ft
Counted as living area: Yes

Heated: Yes
Finished: Yes
Enclosed: Yes
Contiguous: Yes
Permitted: Yes
Wet space: No
Addition: No
Conversion: No

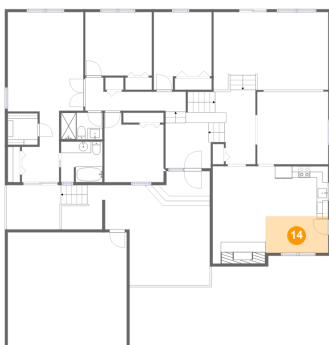
13 Floor 2 - Living Room



Dimensions: 20'0" x 13'7"
Area: 271 sq. ft
Counted as living area: Yes

Heated: Yes
Finished: Yes
Enclosed: Yes
Contiguous: Yes
Permitted: Yes
Wet space: No
Addition: No
Conversion: No

14 Floor 2 - Breakfast Nook

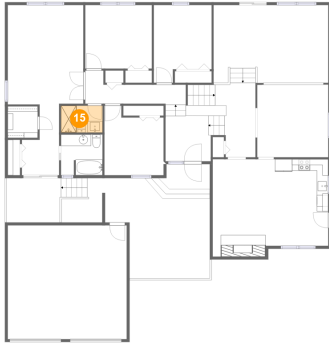


Dimensions: 11'0" x 6'5"
Area: 70 sq. ft
Counted as living area: Yes

Heated: Yes
Finished: Yes
Enclosed: Yes
Contiguous: Yes
Permitted: Yes
Wet space: No
Addition: No
Conversion: No

9904 Dellcastle Road, Montgomery Village, Montgomery
County, Maryland, United States, 20886

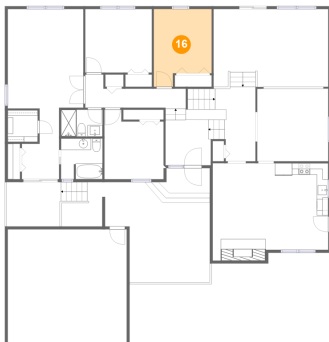
15 Floor 2 - Bath



Dimensions: 7'3" x 4'8"
Area: 34 sq. ft
Counted as living area: Yes

Heated: Yes
Finished: Yes
Enclosed: Yes
Contiguous: Yes
Permitted: Yes
Wet space: Yes
Addition: No
Conversion: No

16 Floor 2 - Bedroom



Dimensions: 10'1" x 13'6"
Area: 121 sq. ft
Counted as living area: Yes

Heated: Yes
Finished: Yes
Enclosed: Yes
Contiguous: Yes
Permitted: Yes
Wet space: No
Addition: No
Conversion: No

17 Floor 2 - Hall

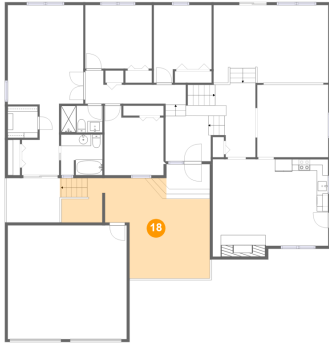


Dimensions: 17'6" x 5'9"
Area: 73 sq. ft
Counted as living area: Yes

Heated: Yes
Finished: Yes
Enclosed: Yes
Contiguous: Yes
Permitted: Yes
Wet space: No
Addition: No
Conversion: No

9904 Dellcastle Road, Montgomery Village, Montgomery
County, Maryland, United States, 20886

18 Floor 2 - Patio



Dimensions: 25'10" x 17'5"
Area: 305 sq. ft
Counted as living area: No

Heated: No
Finished: Yes
Enclosed: No
Contiguous: Yes
Permitted: Yes
Wet space: No
Addition: No
Conversion: No

19 Floor 2 - Primary Bedroom



Dimensions: 13'2" x 29'8"
Area: 289 sq. ft
Counted as living area: Yes

Heated: Yes
Finished: Yes
Enclosed: Yes
Contiguous: Yes
Permitted: Yes
Wet space: No
Addition: No
Conversion: No

20 Floor 2 - Deck

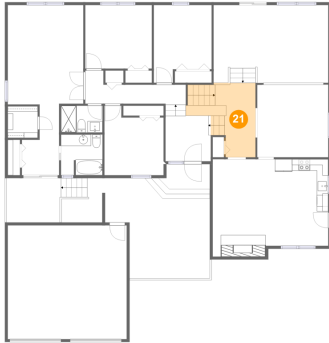


Dimensions: 9'3" x 7'9"
Area: 72 sq. ft
Counted as living area: No

Heated: No
Finished: Yes
Enclosed: No
Contiguous: Yes
Permitted: Yes
Wet space: No
Addition: No
Conversion: No

9904 Dellcastle Road, Montgomery Village, Montgomery
County, Maryland, United States, 20886

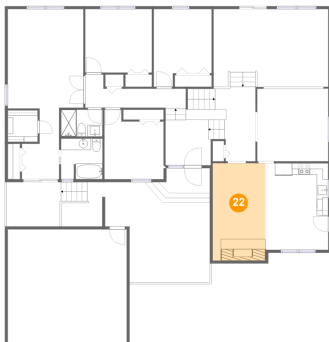
21 Floor 2 - Hall



Dimensions: 7'1" x 12'11"
Area: 114 sq. ft
Counted as living area: Yes

Heated: Yes
Finished: Yes
Enclosed: Yes
Contiguous: Yes
Permitted: Yes
Wet space: No
Addition: No
Conversion: No

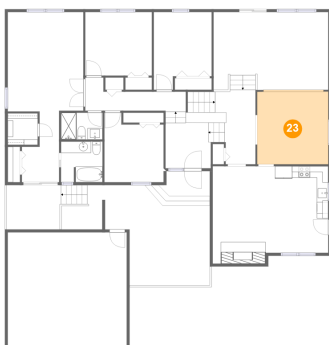
22 Floor 2 - Family Room



Dimensions: 9'2" x 15'1"
Area: 156 sq. ft
Counted as living area: Yes

Heated: Yes
Finished: Yes
Enclosed: Yes
Contiguous: Yes
Permitted: Yes
Wet space: No
Addition: No
Conversion: No

23 Floor 2 - Dining Area



Dimensions: 12'5" x 12'8"
Area: 160 sq. ft
Counted as living area: Yes

Heated: Yes
Finished: Yes
Enclosed: Yes
Contiguous: Yes
Permitted: Yes
Wet space: No
Addition: No
Conversion: No

9904 Dellcastle Road, Montgomery Village, Montgomery
County, Maryland, United States, 20886

24 Floor 2 - Foyer



Dimensions: 7'11" x 7'11"
Area: 63 sq. ft
Counted as living area: Yes

Heated: Yes
Finished: Yes
Enclosed: Yes
Contiguous: Yes
Permitted: Yes
Wet space: No
Addition: No
Conversion: No