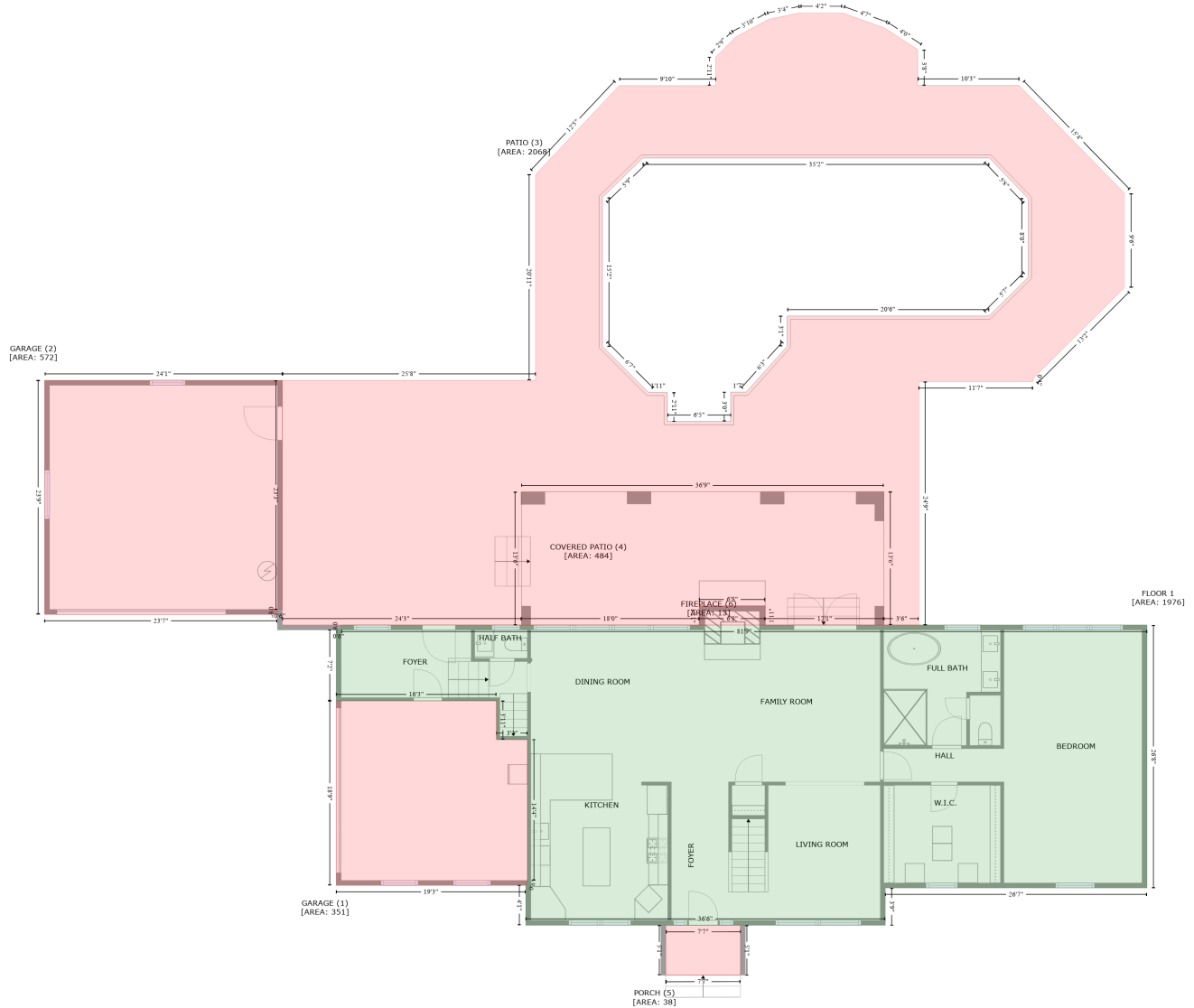


# 312 Indian Lake Rd, Hendersonville, Tennessee, United States

Gross Living Area: 3587 sq. ft



Space	Area (sq. ft)	Calculation
FLOOR 1 (Living area)	1976	Coordinate Polygon Area Algorithm using inches $-((1344.2 + 1344.2) * (670 - 990.1) + (1344.2 + 1025.5) * (990.1 - 990.1) + (1025.5 + 1025.5) * (990.1 - 1035.5) + (1025.5 + 587.8) * (1035.5 - 1035.5) + (587.8 + 587.8) * (1035.5 - 987) + (587.8 + 589.8) * (987 - 981) + (589.8 + 589.8) * (981 - 809.5) + (589.8 + 552.1) * (809.5 - 809.5) + (552.1 + 552.1) * (809.5 - 762.3) + (552.1 + 357) * (762.3 - 762.3) + (357 + 357) * (762.3 - 676) + (357 + 363) * (676 - 676) + (363 + 363) * (676 - 670) + (363 + 1344.2) * (670 - 670)) * 0.5 * 0.00694$
GARAGE (Non-living area)	351	$-((552.1 + 552.1) * (762.3 - 809.5) + (552.1 + 589.8) * (809.5 - 809.5) + (589.8 + 589.8) * (809.5 - 981) + (589.8 + 587.8) * (981 - 987) + (587.8 + 357) * (987 - 987) + (357 + 357) * (987 - 762.3) + (357 + 552.1) * (762.3 - 762.3)) * 0.5 * 0.00694$

# 312 Indian Lake Rd, Hendersonville, Tennessee, United States

Gross Living Area: 3587 sq. ft

Space	Area (sq. ft)	Calculation <small>Coordinate Polygon Area Algorithm using inches</small>
GARAGE (Non-living area)	572	$-\left((291.3 + 291.3) * (372 - 651) + (291.3 + 285.3) * (651 - 651) + (285.3 + 285.3) * (651 - 657) + (285.3 + 1.9) * (657 - 657) + (1.9 + 1.9) * (657 - 372) + (1.9 + 291.3) * (372 - 372)\right) * 0.5 * 0.00694$
PATIO (Non-living area)	2068	$-\left((972.7 + 1024.8) * (-75.7 - -57) + (1024.8 + 1065) * (-57 - -30.7) + (1065 + 1065) * (-30.7 - 12.8) + (1065 + 1188.4) * (12.8 - 12.8) + (1188.4 + 1317) * (12.8 - 144.3) + (1317 + 1317) * (144.3 - 258.7) + (1317 + 1205.3) * (258.7 - 369.9) + (1205.3 + 1205.3) * (369.9 - 373.4) + (1205.3 + 1066.3) * (373.4 - 373.4) + (1066.3 + 1066.3) * (373.4 - 670) + (1066.3 + 1023.9) * (670 - 670) + (1023.9 + 1023.8) * (670 - 507.7) + (1023.8 + 582.7) * (507.7 - 507.7) + (582.7 + 582.7) * (507.7 - 670) + (582.7 + 291.3) * (670 - 670) + (291.3 + 291.3) * (670 - 372) + (291.3 + 599.7) * (372 - 372) + (599.7 + 599.7) * (372 - 121.4) + (599.7 + 701.5) * (121.4 - 13.1) + (701.5 + 819.2) * (13.1 - 13.1) + (819.2 + 819.2) * (13.1 - -21.5) + (819.2 + 842.6) * (-21.5 - -45.5) + (842.6 + 883.2) * (-45.5 - -67.5) + (883.2 + 922.4) * (-67.5 - -75.7) + (922.4 + 972.7) * (-75.7 - -75.7)\right) * 0.5 * 0.00694 + \left((1152.3 + 730.4) * (101.2 - 101.2) + (730.4 + 681.2) * (101.2 - 149.2) + (681.2 + 681.2) * (149.2 - 330.7) + (681.2 + 737.1) * (330.7 - 386.6) + (737.1 + 760.2) * (386.6 - 386.6) + (760.2 + 760.2) * (386.6 - 422) + (760.2 + 837.3) * (422 - 422) + (837.3 + 837.3) * (422 - 386.3) + (837.3 + 856.2) * (386.3 - 386.3) + (856.2 + 906) * (386.3 - 330.6) + (906 + 906) * (330.6 - 293.7) + (906 + 1151.7) * (293.7 - 293.7) + (1151.7 + 1199.6) * (293.7 - 246.4) + (1199.6 + 1199.6) * (246.4 - 150.5) + (1199.6 + 1152.3) * (150.5 - 101.2)\right) * 0.5 * 0.00694$
COVERED PATIO (Non-living area)	484	$-\left((1023.8 + 1023.9) * (507.7 - 670) + (1023.9 + 879.3) * (670 - 670) + (879.3 + 879.3) * (670 - 646.8) + (879.3 + 799) * (646.8 - 646.8) + (799 + 799) * (646.8 - 670) + (799 + 582.7) * (670 - 670) + (582.7 + 582.7) * (670 - 507.7) + (582.7 + 1023.8) * (507.7 - 507.7)\right) * 0.5 * 0.00694$
PORCH (Non-living area)	38	$-\left((849.2 + 849.2) * (1035.5 - 1096.3) + (849.2 + 758.3) * (1096.3 - 1096.5) + (758.3 + 758.3) * (1096.5 - 1035.8) + (758.3 + 849.2) * (1035.8 - 1035.5)\right) * 0.5 * 0.00694$
FIREPLACE (Non-living area)	13	$-\left((879.3 + 879.3) * (646.8 - 670) + (879.3 + 799) * (670 - 670) + (799 + 799) * (670 - 646.8) + (799 + 879.3) * (646.8 - 646.8)\right) * 0.5 * 0.00694$

FLOOR 2  
[AREA: 183]



LOW CEILING (1)  
[AREA: 39]

Space	Area (sq. ft)	Calculation <small>Coordinate Polygon Area Algorithm using inches</small>
FLOOR 2 (Living area)	183	$-\left((495.5 + 495.5) * (834.5 - 854.8) + (495.5 + 547.6) * (854.8 - 854.8) + (547.6 + 547.6) * (854.8 - 834.5) + (547.6 + 593) * (834.5 - 834.5) + (593 + 593) * (834.5 - 1020.7) + (593 + 587) * (1020.7 - 1014.7) + (587 + 587) * (1014.7 - 1005.2) + (587 + 433.1) * (1005.2 - 1005.2) + (433.1 + 433.1) * (1005.2 - 840.5) + (433.1 + 421.4) * (840.5 - 840.5) + (421.4 + 415.4) * (840.5 - 834.5) + (415.4 + 495.5) * (834.5 - 834.5)\right) * 0.5 * 0.00694$
LOW CEILING	39	$-\left((415.4 + 421.4) * (834.5 - 840.5) + (421.4 + 433.1) * (840.5 - 840.5) + (433.1 + 433.1) * (840.5 - 840.5)\right) * 0.5 * 0.00694$

# 312 Indian Lake Rd, Hendersonville, Tennessee, United States

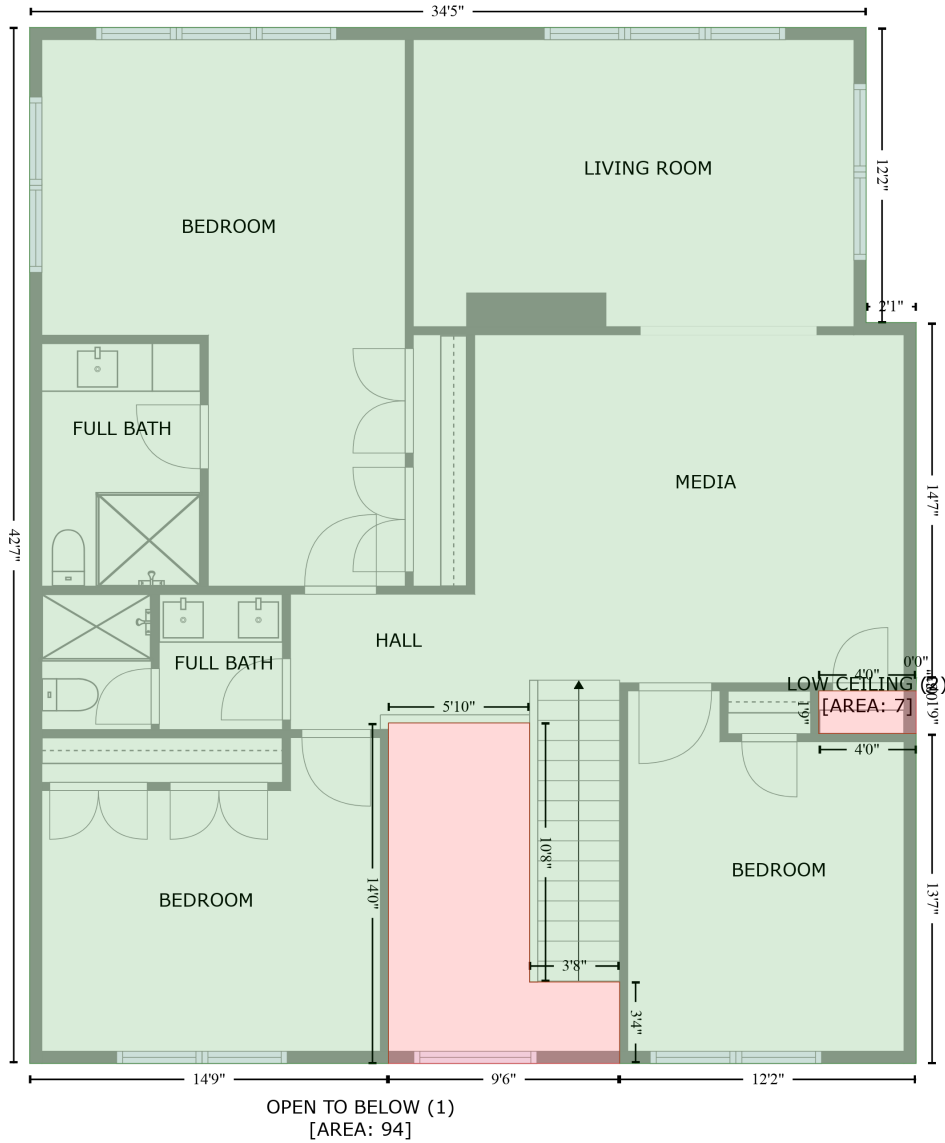
Gross Living Area: 3587 sq. ft

Space	Area (sq. ft)	Calculation <small>Coordinate Polygon Area Algorithm using inches</small>
(Non-living area)		$1005.2 + (433.1 + 587) * (1005.2 - 1005.2) + (587 + 587) * (1005.2 - 1014.7) + (587 + 593) * (1014.7 - 1020.7) + (593 + 415.4) * (1020.7 - 1020.7) + (415.4 + 415.4) * (1020.7 - 834.5) * 0.5 * 0.00694$

# 312 Indian Lake Rd, Hendersonville, Tennessee, United States

Gross Living Area: 3587 sq. ft

FLOOR 3  
[AREA: 1428]



## Space

Area (sq. ft)

Calculation Coordinate Polygon Area Algorithm using inches

FLOOR 3  
(Living area)

1428

$$\begin{aligned}
 & -((996.1 + 996.1) * (603.5 - 749.1) + (996.1 + 1020.8) * (749.1 - 749.1) + (1020.8 + 1020.8) * \\
 & (749.1 - 924.4) + (1020.8 + 1021) * (924.4 - 924.4) + (1021 + 1020.8) * (924.4 - 927.6) + (1020.8 \\
 & + 1020.8) * (927.6 - 930.9) + (1020.8 + 972.7) * (930.9 - 930.9) + (972.7 + 972.7) * (930.9 - \\
 & 951.9) + (972.7 + 1020.8) * (951.9 - 951.9) + (1020.8 + 1020.8) * (951.9 - 1114.6) + (1020.8 + \\
 & 874.4) * (1114.6 - 1114.6) + (874.4 + 874.4) * (1114.6 - 1074.5) + (874.4 + 829.9) * (1074.5 - \\
 & 1074.5) + (829.9 + 829.9) * (1074.5 - 946.6) + (829.9 + 760.2) * (946.6 - 946.6) + (760.2 + 760.2) \\
 & * (946.6 - 1114.6) + (760.2 + 583.1) * (1114.6 - 1114.6) + (583.1 + 583.1) * (1114.6 - 603.5) +
 \end{aligned}$$

# 312 Indian Lake Rd, Hendersonville, Tennessee, United States

Gross Living Area: 3587 sq. ft

Space	Area (sq. ft)	Calculation <small>Coordinate Polygon Area Algorithm using inches</small>
OPEN TO BELOW (Non-living area)	94	$(583.1 + 996.1) * (603.5 - 603.5) * 0.5 * 0.00694$ $-((829.9 + 829.9) * (946.6 - 1074.5) + (829.9 + 874.4) * (1074.5 - 1074.5) + (874.4 + 874.4) * (1074.5 - 1114.6) + (874.4 + 760.2) * (1114.6 - 1114.6) + (760.2 + 760.2) * (1114.6 - 946.6) + (760.2 + 829.9) * (946.6 - 946.6)) * 0.5 * 0.00694$
LOW CEILING (Non-living area)	7	$-((1020.8 + 1020.8) * (930.9 - 951.9) + (1020.8 + 972.7) * (951.9 - 951.9) + (972.7 + 972.7) * (951.9 - 930.9) + (972.7 + 1020.8) * (930.9 - 930.9)) * 0.5 * 0.00694$