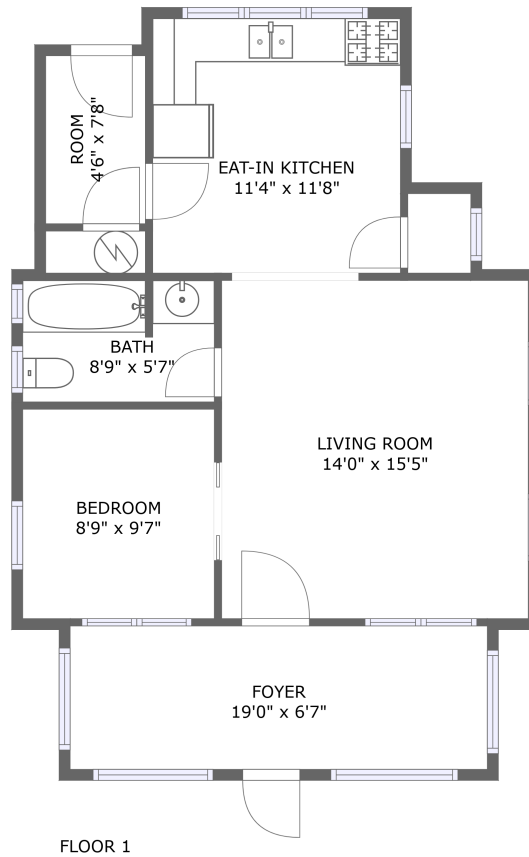


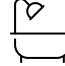
8486 Wickham Boulevard, Sodus Point, Wayne County, New York, United States, 14555



Property Summary

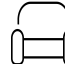
 **0** garages

 **1** bedrooms

 **1** bathrooms

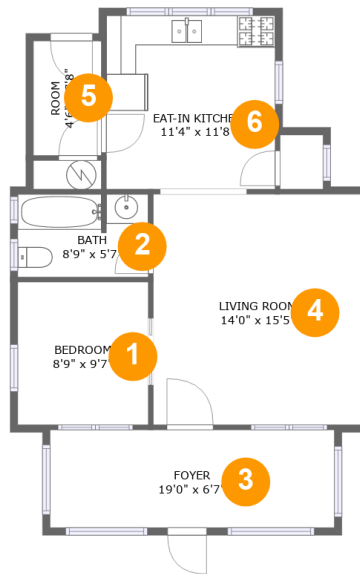
 **0** half baths

 **1** floors

 **731** Gross Living Area sqft

 **745** total sqft

8486 Wickham Boulevard, Sodus Point, Wayne County, New York, United States, 14555



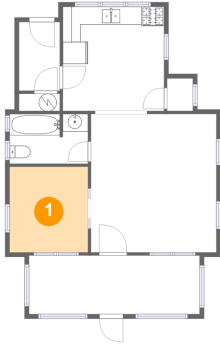
Room Dimensions

Floor 1**Total sqft: 745****Living area: 731**

#	Room name	Dimensions	Area (sqft)	Counted as Living Area
1	Bedroom	8'9" x 9'7"	84 sq. ft	Yes
2	Bath	8'9" x 5'7"	48 sq. ft	Yes
3	Foyer	19'0" x 6'7"	125 sq. ft	Yes
4	Living Room	14'0" x 15'5"	216 sq. ft	Yes
5	Room	4'6" x 7'8"	35 sq. ft	Yes
6	Eat-in Kitchen	11'4" x 11'8"	132 sq. ft	Yes

8486 Wickham Boulevard, Sodus Point, Wayne County, New York, United States, 14555

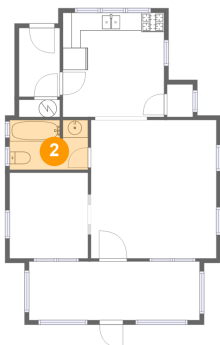
1 Floor 1 - Bedroom



Dimensions: 8'9" x 9'7"
Area: 84 sq. ft
Counted as Living Area:
Yes

Heated: Yes
Finished: Yes
Enclosed: Yes
Contiguous:
Yes
Permitted: Yes
Wet Space: No
Addition: No
Conversion: No

2 Floor 1 - Bath



Dimensions: 8'9" x 5'7"
Area: 48 sq. ft
Counted as Living Area:
Yes

Heated: Yes
Finished: Yes
Enclosed: Yes
Contiguous:
Yes
Permitted: Yes
Wet Space: Yes
Addition: No
Conversion: No

8486 Wickham Boulevard, Sodus Point, Wayne County, New York, United States, 14555

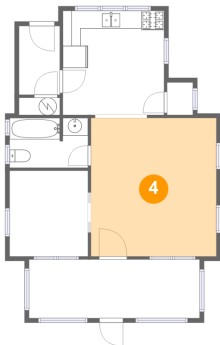
3 Floor 1 - Foyer



Dimensions: 19'0" x 6'7"
Area: 125 sq. ft
Counted as Living Area:
Yes

Heated: Yes
Finished: Yes
Enclosed: Yes
Contiguous:
Yes
Permitted: Yes
Wet Space: No
Addition: No
Conversion: No

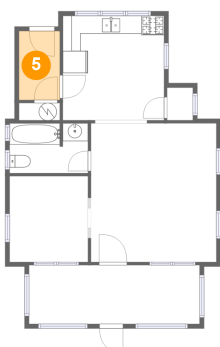
4 Floor 1 - Living Room



Dimensions: 14'0" x 15'5"
Area: 216 sq. ft
Counted as Living Area:
Yes

Heated: Yes
Finished: Yes
Enclosed: Yes
Contiguous:
Yes
Permitted: Yes
Wet Space: No
Addition: No
Conversion: No

5 Floor 1 - Room

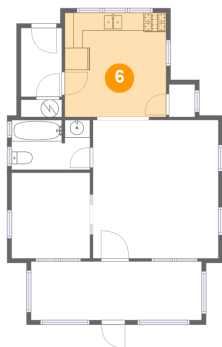


Dimensions: 4'6" x 7'8"
Area: 35 sq. ft
Counted as Living Area:
Yes

Heated: Yes
Finished: Yes
Enclosed: Yes
Contiguous:
Yes
Permitted: Yes
Wet Space: No
Addition: No
Conversion: No

8486 Wickham Boulevard, Sodus Point, Wayne County, New York, United States, 14555

6 Floor 1 - Eat-in Kitchen



Dimensions: 11'4" x 11'8"
Area: 132 sq. ft
Counted as Living Area:
Yes

Heated: Yes
Finished: Yes
Enclosed: Yes
Contiguous:
Yes
Permitted: Yes
Wet Space: No
Addition: No
Conversion: No