

Home report

6109 Colchester Road, Fairfax, Fairfax County, Virginia, United States, 22030



Total Area: 3601 sq. ft

Floor 1: 1122 sq. ft, Floor 2: 804 sq. ft, Floor 3: 1141 sq. ft, Floor 4: 534 sq. ft

Excluded: Fireplace 22 sq. ft, Garage 395 sq. ft, Porch 60 sq. ft, Embedded window 7 sq. ft, Walls: 288 sq. ft

Property summary

 **4** Floors

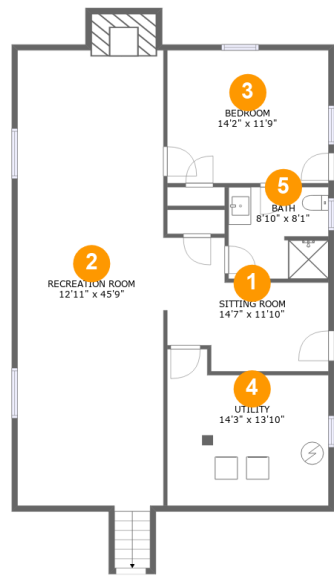
 **5** Bedrooms

 **4** Bathrooms

 **1** Garages

Home report

6109 Colchester Road, Fairfax, Fairfax County, Virginia, United States, 22030



Room dimensions

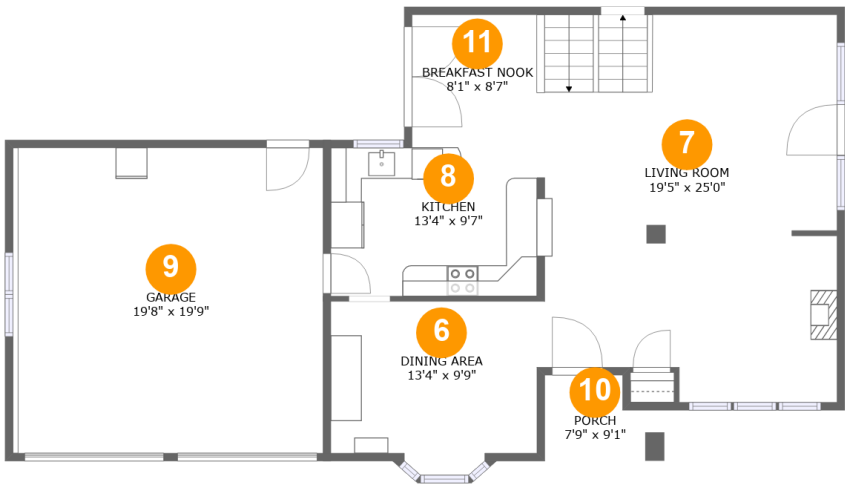
Floor 1

Total:1122sqft Excluded: 22sqft

#		Max Dimensions	sqft	Included
1	Sitting Room	14'7" x 11'10"	125 sq. ft	Yes
2	Recreation Room	12'11" x 45'9"	536 sq. ft	Yes
3	Bedroom	14'2" x 11'9"	167 sq. ft	Yes
4	Utility	14'3" x 13'10"	172 sq. ft	Yes
5	Bath	8'10" x 8'1"	70 sq. ft	Yes

Home report

6109 Colchester Road, Fairfax, Fairfax County, Virginia, United States, 22030



Room dimensions

Floor 2

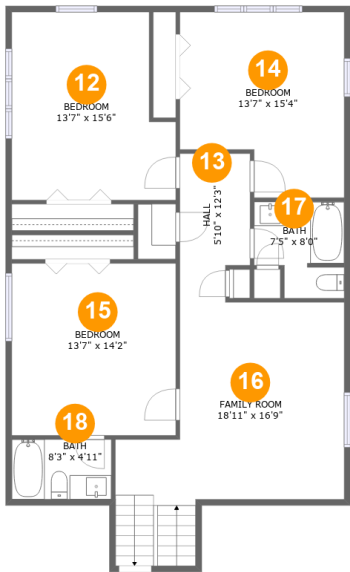
Total:804sqft

Excluded: 462sqft

#		Max Dimensions	sqft	Included
6	Dining Area	13'4" x 9'9"	131 sq. ft	Yes
7	Living Room	19'5" x 25'0"	462 sq. ft	Yes
8	Kitchen	13'4" x 9'7"	128 sq. ft	Yes
9	Garage	19'8" x 19'9"	395 sq. ft	No
10	Porch	7'9" x 9'1"	60 sq. ft	No
11	Breakfast Nook	8'1" x 8'7"	69 sq. ft	Yes

Home report

6109 Colchester Road, Fairfax, Fairfax County, Virginia, United States, 22030



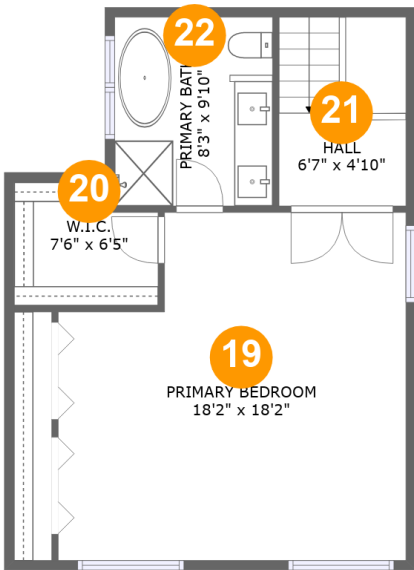
Room dimensions

Floor 3 Total:1141sqft Excluded: 0sqft

#		Max Dimensions	sqft	Included
12	Bedroom	13'7" x 15'6"	190 sq. ft	Yes
13	Hall	5'10" x 12'3"	65 sq. ft	Yes
14	Bedroom	13'7" x 15'4"	184 sq. ft	Yes
15	Bedroom	13'7" x 14'2"	192 sq. ft	Yes
16	Family Room	18'11" x 16'9"	284 sq. ft	Yes
17	Bath	7'5" x 8'0"	52 sq. ft	Yes
18	Bath	8'3" x 4'11"	41 sq. ft	Yes

Home report

6109 Colchester Road, Fairfax, Fairfax County, Virginia, United States, 22030

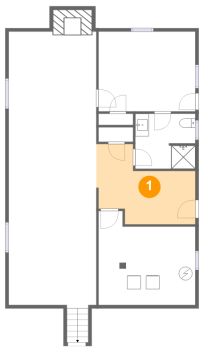


Room dimensions

Floor 4 Total:534sqft Excluded: 0sqft

#		Max Dimensions	sqft	Included
19	Primary Bedroom	18'2" x 18'2"	300 sq. ft	Yes
20	W.I.C.	7'6" x 6'5"	44 sq. ft	Yes
21	Hall	6'7" x 4'10"	65 sq. ft	Yes
22	Primary Bath	8'3" x 9'10"	81 sq. ft	Yes

1 Floor 1 - Sitting Room



Max Dimensions: 14'7" x 11'10"
Calculated Area: 125 sq. ft
Included: Yes

Heated: Yes
Finished: Yes
Enclosed: Yes
Contiguous: Yes
Permitted: Yes
Wet space: No
Addition: No
Conversion: No

2 Floor 1 - Recreation Room

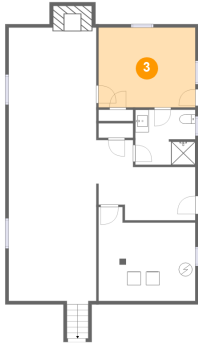


Max Dimensions: 12'11" x 45'9"
Calculated Area: 536 sq. ft
Included: Yes

Heated: Yes
Finished: Yes
Enclosed: Yes
Contiguous: Yes
Permitted: Yes
Wet space: No
Addition: No
Conversion: No

6109 Colchester Road, Fairfax, Fairfax County, Virginia, United States, 22030

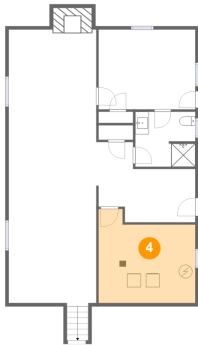
3 Floor 1 - Bedroom



Max Dimensions: 14'2" x 11'9"
Calculated Area: 167 sq. ft
Included: Yes

Heated: Yes
Finished: Yes
Enclosed: Yes
Contiguous: Yes
Permitted: Yes
Wet space: No
Addition: No
Conversion: No

4 Floor 1 - Utility



Max Dimensions: 14'3" x 13'10"
Calculated Area: 172 sq. ft
Included: Yes

Heated: Yes
Finished: Yes
Enclosed: Yes
Contiguous: Yes
Permitted: Yes
Wet space: No
Addition: No
Conversion: No

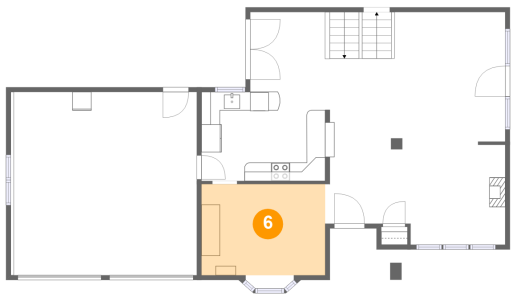
5 Floor 1 - Bath



Max Dimensions: 8'10" x 8'1"
Calculated Area: 70 sq. ft
Included: Yes

Heated: Yes
Finished: Yes
Enclosed: Yes
Contiguous: Yes
Permitted: Yes
Wet space: Yes
Addition: No
Conversion: No

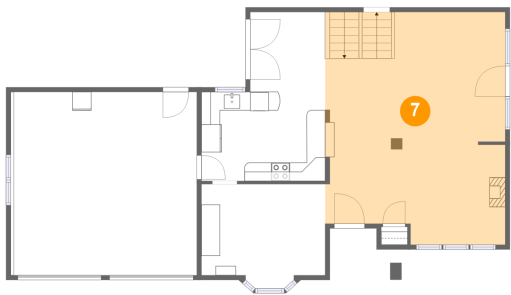
6 Floor 2 - Dining Area



Max Dimensions: 13'4" x 9'9"
Calculated Area: 131 sq. ft
Included: Yes

Heated: Yes
Finished: Yes
Enclosed: Yes
Contiguous: Yes
Permitted: Yes
Wet space: No
Addition: No
Conversion: No

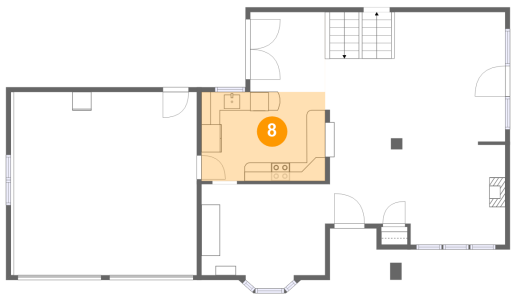
7 Floor 2 - Living Room



Max Dimensions: 19'5" x 25'0"
Calculated Area: 462 sq. ft
Included: Yes

Heated: Yes
Finished: Yes
Enclosed: Yes
Contiguous: Yes
Permitted: Yes
Wet space: No
Addition: No
Conversion: No

8 Floor 2 - Kitchen

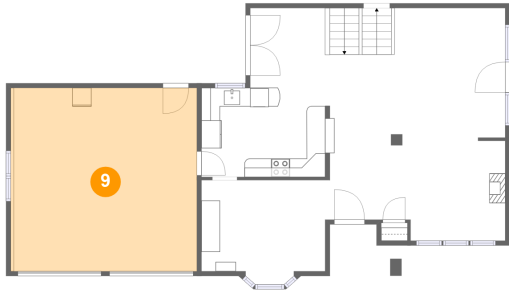


Max Dimensions: 13'4" x 9'7"
Calculated Area: 128 sq. ft
Included: Yes

Heated: Yes
Finished: Yes
Enclosed: Yes
Contiguous: Yes
Permitted: Yes
Wet space: No
Addition: No
Conversion: No

6109 Colchester Road, Fairfax, Fairfax County, Virginia, United States, 22030

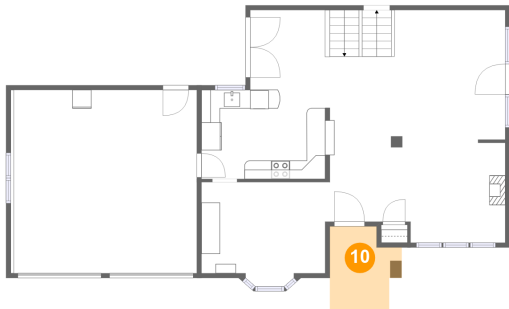
9 Floor 2 - Garage



Max Dimensions: 19'8" x 19'9"
Calculated Area: 395 sq. ft
Included: No

Heated: No
Finished: No
Enclosed: Yes
Contiguous: Yes
Permitted: Yes
Wet space: No
Addition: No
Conversion: No

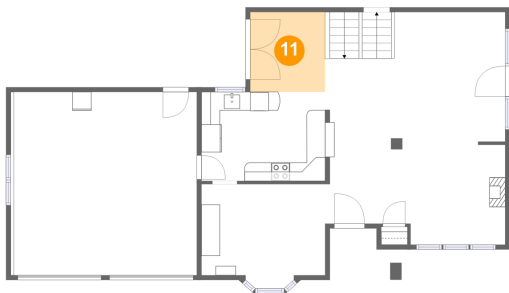
10 Floor 2 - Porch



Max Dimensions: 7'9" x 9'1"
Calculated Area: 60 sq. ft
Included: No

Heated: No
Finished: Yes
Enclosed: No
Contiguous: Yes
Permitted: Yes
Wet space: No
Addition: No
Conversion: No

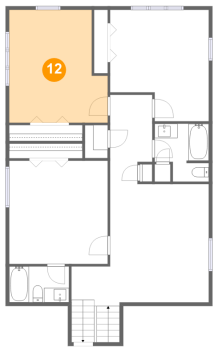
11 Floor 2 - Breakfast Nook



Max Dimensions: 8'1" x 8'7"
Calculated Area: 69 sq. ft
Included: Yes

Heated: Yes
Finished: Yes
Enclosed: Yes
Contiguous: Yes
Permitted: Yes
Wet space: No
Addition: No
Conversion: No

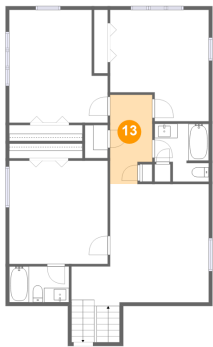
12 Floor 3 - Bedroom



Max Dimensions: 13'7" x 15'6"
Calculated Area: 190 sq. ft
Included: Yes

Heated: Yes
Finished: Yes
Enclosed: Yes
Contiguous: Yes
Permitted: Yes
Wet space: No
Addition: No
Conversion: No

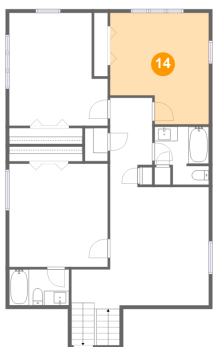
13 Floor 3 - Hall



Max Dimensions: 5'10" x 12'3"
Calculated Area: 65 sq. ft
Included: Yes

Heated: Yes
Finished: Yes
Enclosed: Yes
Contiguous: Yes
Permitted: Yes
Wet space: No
Addition: No
Conversion: No

14 Floor 3 - Bedroom

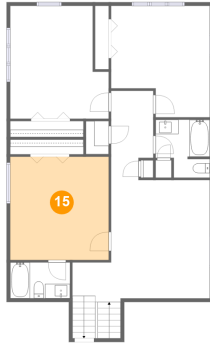


Max Dimensions: 13'7" x 15'4"
Calculated Area: 184 sq. ft
Included: Yes

Heated: Yes
Finished: Yes
Enclosed: Yes
Contiguous: Yes
Permitted: Yes
Wet space: No
Addition: No
Conversion: No

6109 Colchester Road, Fairfax, Fairfax County, Virginia, United States, 22030

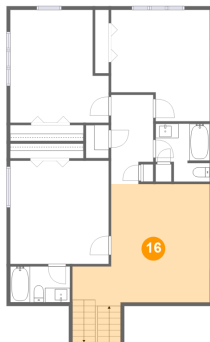
15 Floor 3 - Bedroom



Max Dimensions: 13'7" x 14'2"
Calculated Area: 192 sq. ft
Included: Yes

Heated: Yes
Finished: Yes
Enclosed: Yes
Contiguous: Yes
Permitted: Yes
Wet space: No
Addition: No
Conversion: No

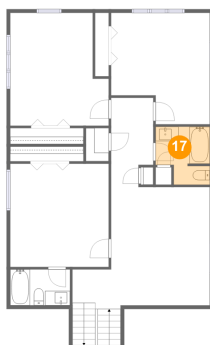
16 Floor 3 - Family Room



Max Dimensions: 18'11" x 16'9"
Calculated Area: 284 sq. ft
Included: Yes

Heated: Yes
Finished: Yes
Enclosed: Yes
Contiguous: Yes
Permitted: Yes
Wet space: No
Addition: No
Conversion: No

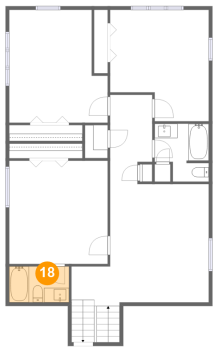
17 Floor 3 - Bath



Max Dimensions: 7'5" x 8'0"
Calculated Area: 52 sq. ft
Included: Yes

Heated: Yes
Finished: Yes
Enclosed: Yes
Contiguous: Yes
Permitted: Yes
Wet space: Yes
Addition: No
Conversion: No

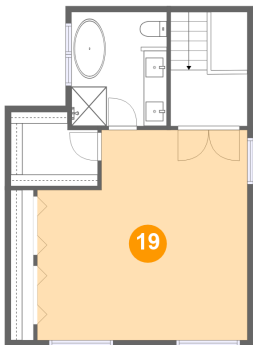
18 Floor 3 - Bath



Max Dimensions: 8'3" x 4'11"
Calculated Area: 41 sq. ft
Included: Yes

Heated: Yes
Finished: Yes
Enclosed: Yes
Contiguous: Yes
Permitted: Yes
Wet space: Yes
Addition: No
Conversion: No

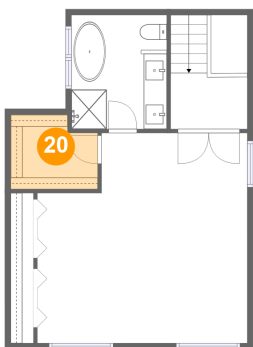
19 Floor 4 - Primary Bedroom



Max Dimensions: 18'2" x 18'2"
Calculated Area: 300 sq. ft
Included: Yes

Heated: Yes
Finished: Yes
Enclosed: Yes
Contiguous: Yes
Permitted: Yes
Wet space: No
Addition: No
Conversion: No

20 Floor 4 - W.I.C.

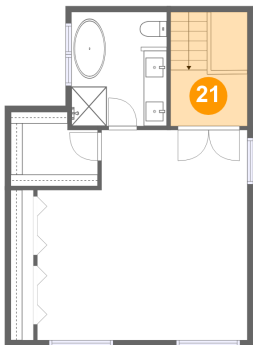


Max Dimensions: 7'6" x 6'5"
Calculated Area: 44 sq. ft
Included: Yes

Heated: Yes
Finished: Yes
Enclosed: Yes
Contiguous: Yes
Permitted: Yes
Wet space: No
Addition: No
Conversion: No

6109 Colchester Road, Fairfax, Fairfax County, Virginia, United States, 22030

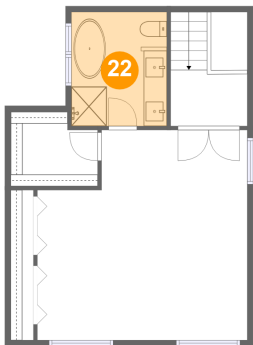
21 Floor 4 - Hall



Max Dimensions: 6'7" x 4'10"
Calculated Area: 65 sq. ft
Included: Yes

Heated: Yes
Finished: Yes
Enclosed: Yes
Contiguous: Yes
Permitted: Yes
Wet space: No
Addition: No
Conversion: No

22 Floor 4 - Primary Bath



Max Dimensions: 8'3" x 9'10"
Calculated Area: 81 sq. ft
Included: Yes

Heated: Yes
Finished: Yes
Enclosed: Yes
Contiguous: Yes
Permitted: Yes
Wet space: Yes
Addition: No
Conversion: No