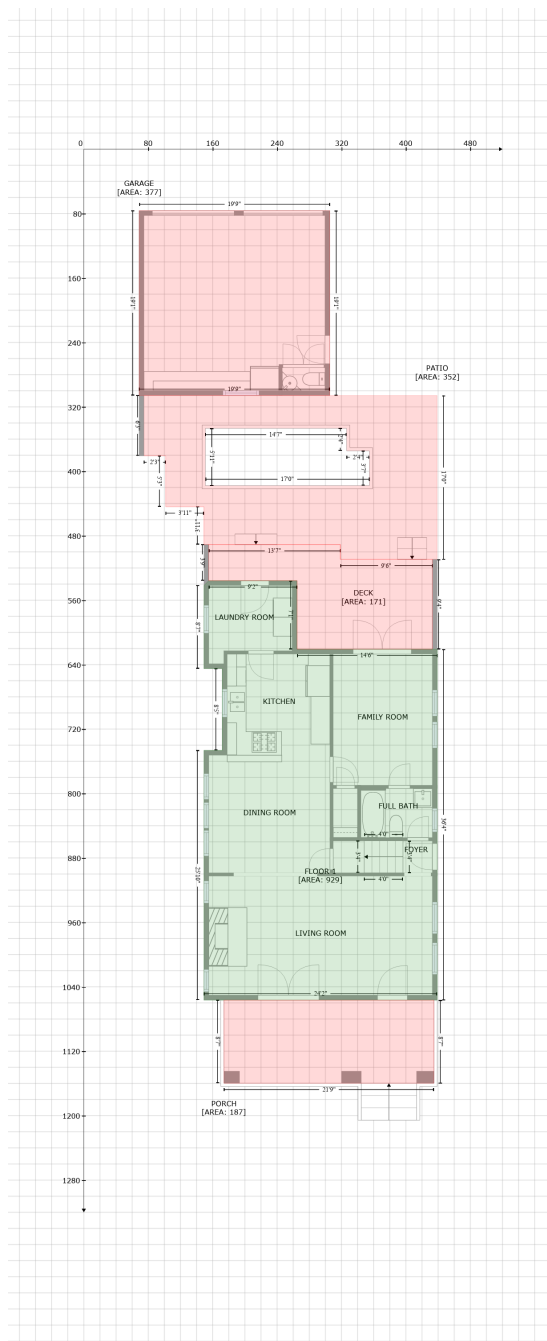


# 336 17th Ave NE, Saint Petersburg, FL, United States

Gross Living Area: 1728 sq. ft



Space	Area (sq. ft)	Calculation <small>Coordinate Polygon Area Algorithm using inches</small>
FLOOR 1 (Living area)	929	$-((264.8 + 264.8) * (535.8 - 620.8) + (264.8 + 438.9) * (620.8 - 620.8) + (438.9 + 438.9) * (620.8 - 1056.5) + (438.9 + 149.2) * (1056.5 - 1056.5) + (149.2 + 149.2) * (1056.5 - 746.4) + (149.2 + 171.9) * (746.4 - 746.4) + (171.9 + 171.9) * (746.4 - 645) + (171.9 + 149.2) * (645 - 645) + (149.2 + 149.2) * (645 - 541.8) + (149.2 + 155.2) * (541.8 - 535.8) + (155.2 + 264.8) * (535.8 - 535.8)) * 0.5 * 0.00694$
GARAGE	377	$-((305.5 + 305.5) * (76.4 - 305.8) + (305.5 + 68.7) * (305.8 - 305.8) + (68.7 + 68.7) * (305.8 -$

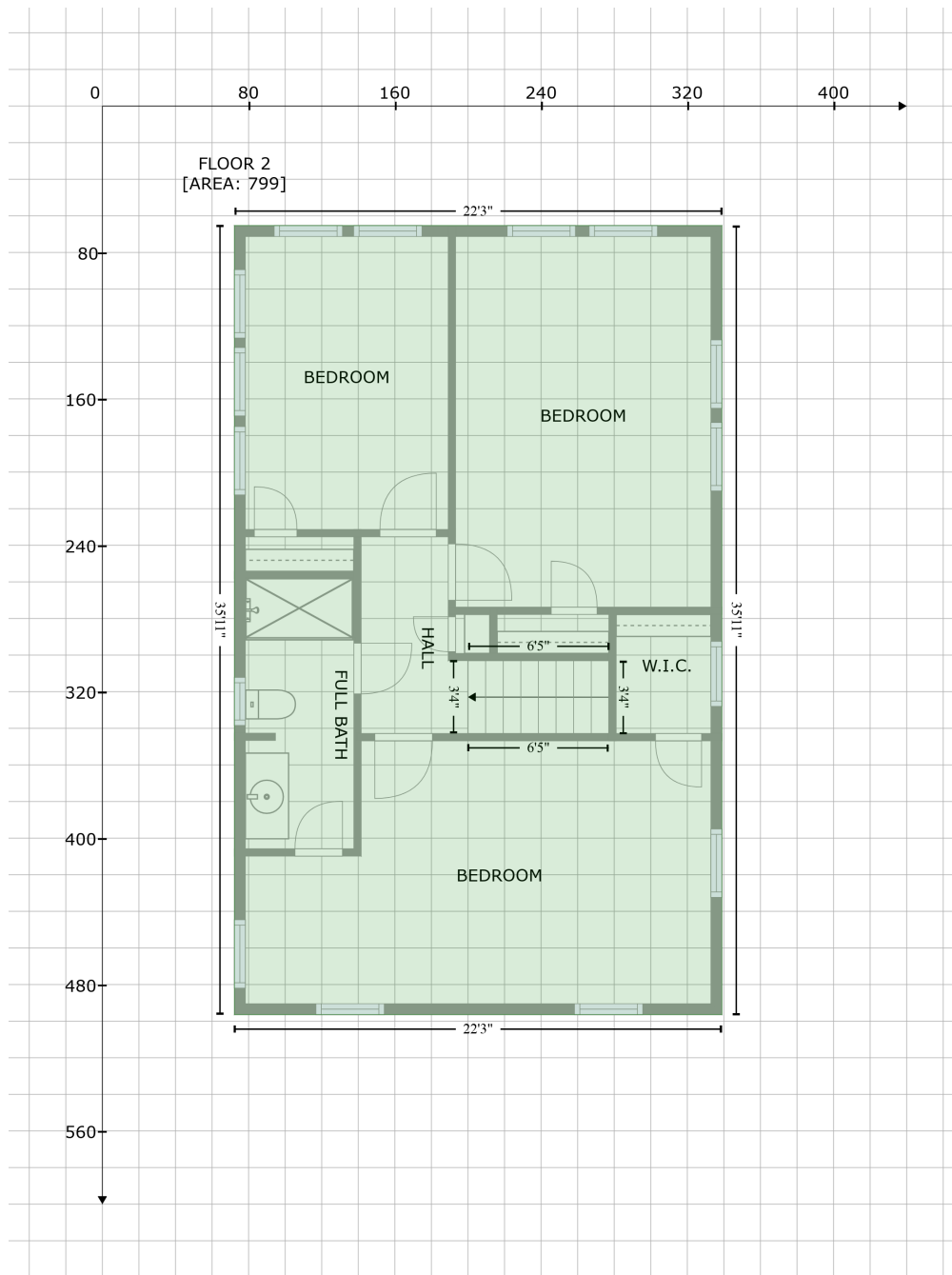
# 336 17th Ave NE, Saint Petersburg, FL, United States

Gross Living Area: 1728 sq. ft

Space	Area (sq. ft)	Calculation <small>Coordinate Polygon Area Algorithm using inches</small>
(Non-living area)		$76.4 + (68.7 + 305.5) * (76.4 - 76.4)) * 0.5 * 0.00694$
DECK (Non-living area)	171	$-((318.6 + 318.6) * (490.9 - 509.3) + (318.6 + 432.9) * (509.3 - 509.3) + (432.9 + 432.9) * (509.3 - 620.8) + (432.9 + 264.8) * (620.8 - 620.8) + (264.8 + 264.8) * (620.8 - 535.8) + (264.8 + 155.2) * (535.8 - 535.8) + (155.2 + 155.2) * (535.8 - 490.9) + (155.2 + 318.6) * (490.9 - 490.9)) * 0.5 * 0.00694$
PORCH (Non-living area)	187	$-((434.9 + 434.9) * (1056.5 - 1159.7) + (434.9 + 174) * (1159.7 - 1159.7) + (174 + 174) * (1159.7 - 1056.5) + (174 + 434.9) * (1056.5 - 1056.5)) * 0.5 * 0.00694$
PATIO (Non-living area)	352	$-((438.9 + 438.9) * (305.8 - 509.3) + (438.9 + 318.6) * (509.3 - 509.3) + (318.6 + 318.6) * (509.3 - 490.9) + (318.6 + 149.2) * (490.9 - 490.9) + (149.2 + 149.2) * (490.9 - 444) + (149.2 + 101.8) * (444 - 444) + (101.8 + 101.8) * (444 - 380.8) + (101.8 + 74.7) * (380.8 - 380.8) + (74.7 + 74.7) * (380.8 - 305.8) + (74.7 + 438.9) * (305.8 - 305.8)) * 0.5 * 0.00694 + -((326.4 + 150.9) * (346.6 - 346.6) + (150.9 + 150.9) * (346.6 - 417.7) + (150.9 + 354.7) * (417.7 - 417.7) + (354.7 + 354.7) * (417.7 - 374.6) + (354.7 + 326.4) * (374.6 - 374.6) + (326.4 + 326.4) * (374.6 - 346.6)) * 0.5 * 0.00694$

# 336 17th Ave NE, Saint Petersburg, FL, United States

Gross Living Area: 1728 sq. ft



## Space

Area (sq. ft)

Calculation Coordinate Polygon Area Algorithm using inches

FLOOR 2  
(Living area)

799

$-((338.9 + 338.9) * (65.3 - 496.5) + (338.9 + 72.2) * (496.5 - 496.5) + (72.2 + 72.2) * (496.5 - 65.3) + (72.2 + 338.9) * (65.3 - 65.3)) * 0.5 * 0.00694$