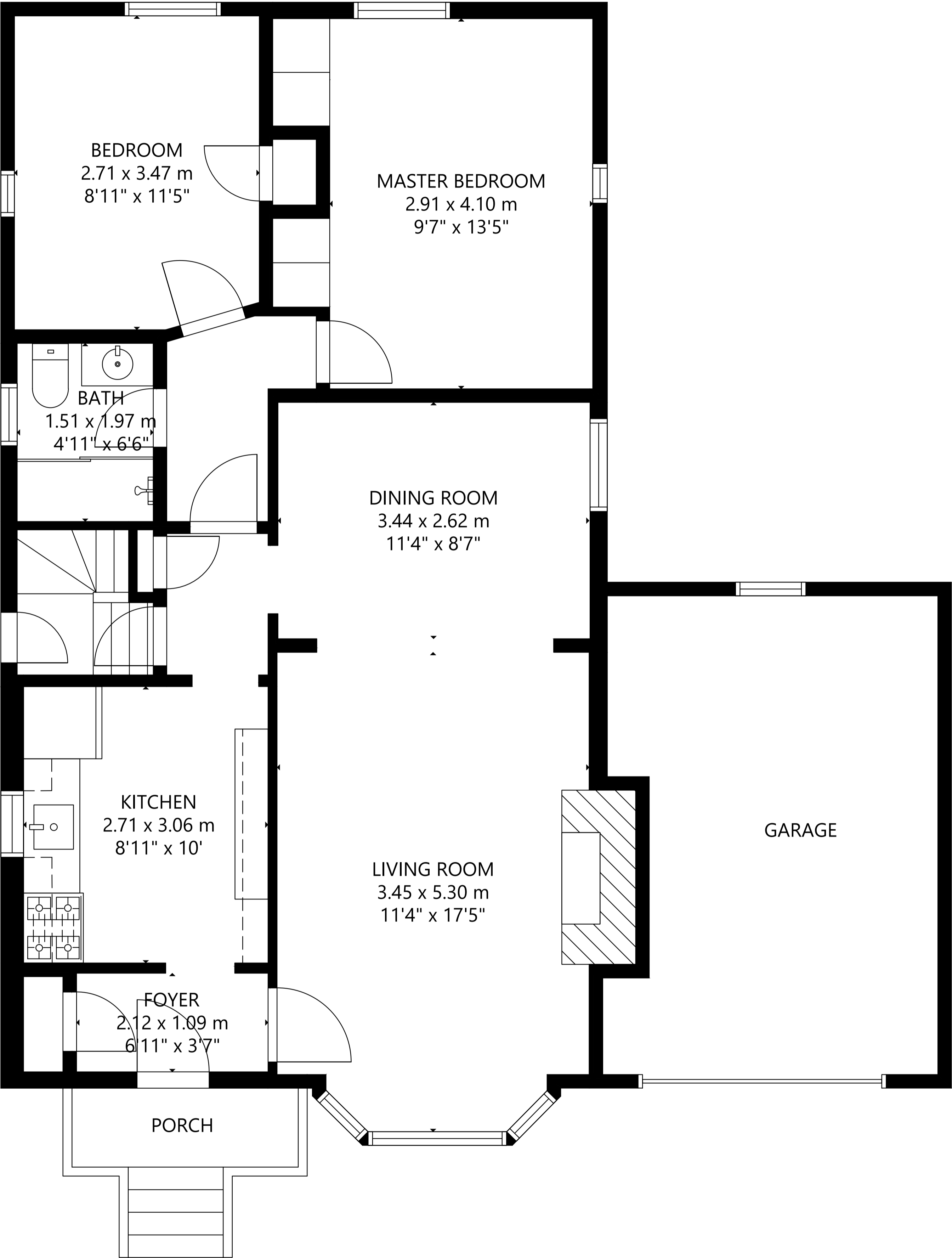
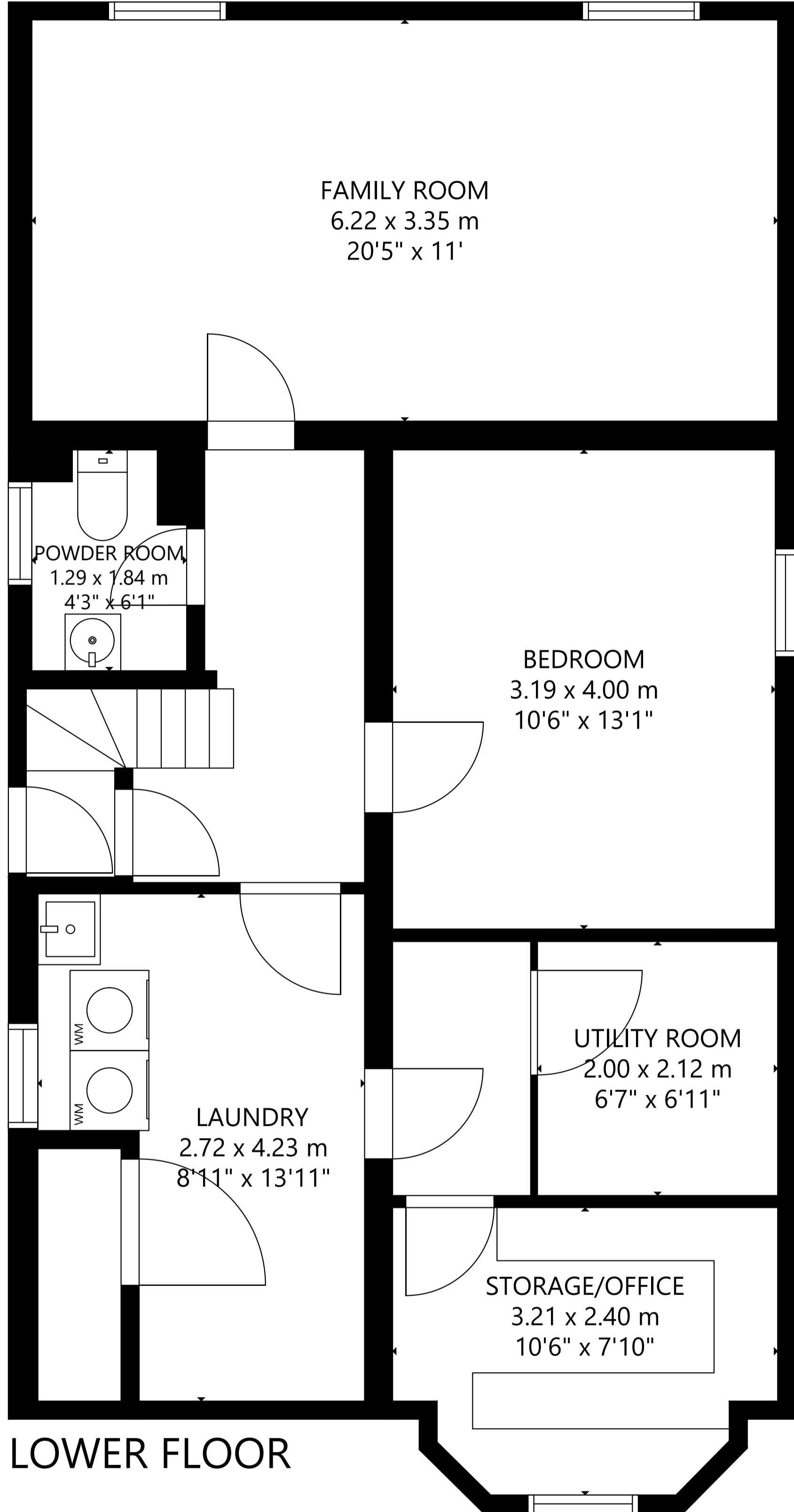


# 627 O'Connor Drive



GROSS INTERNAL AREA  
 MAIN FLOOR: 813 sq ft/ 76 m<sup>2</sup>, LOWER FLOOR: 787 sq ft/ 73 m<sup>2</sup>  
 TOTAL: 1,600 sq ft/ 149 m<sup>2</sup>  
 SIZE AND DIMENSIONS ARE APPROXIMATE, ACTUAL MAY VARY.