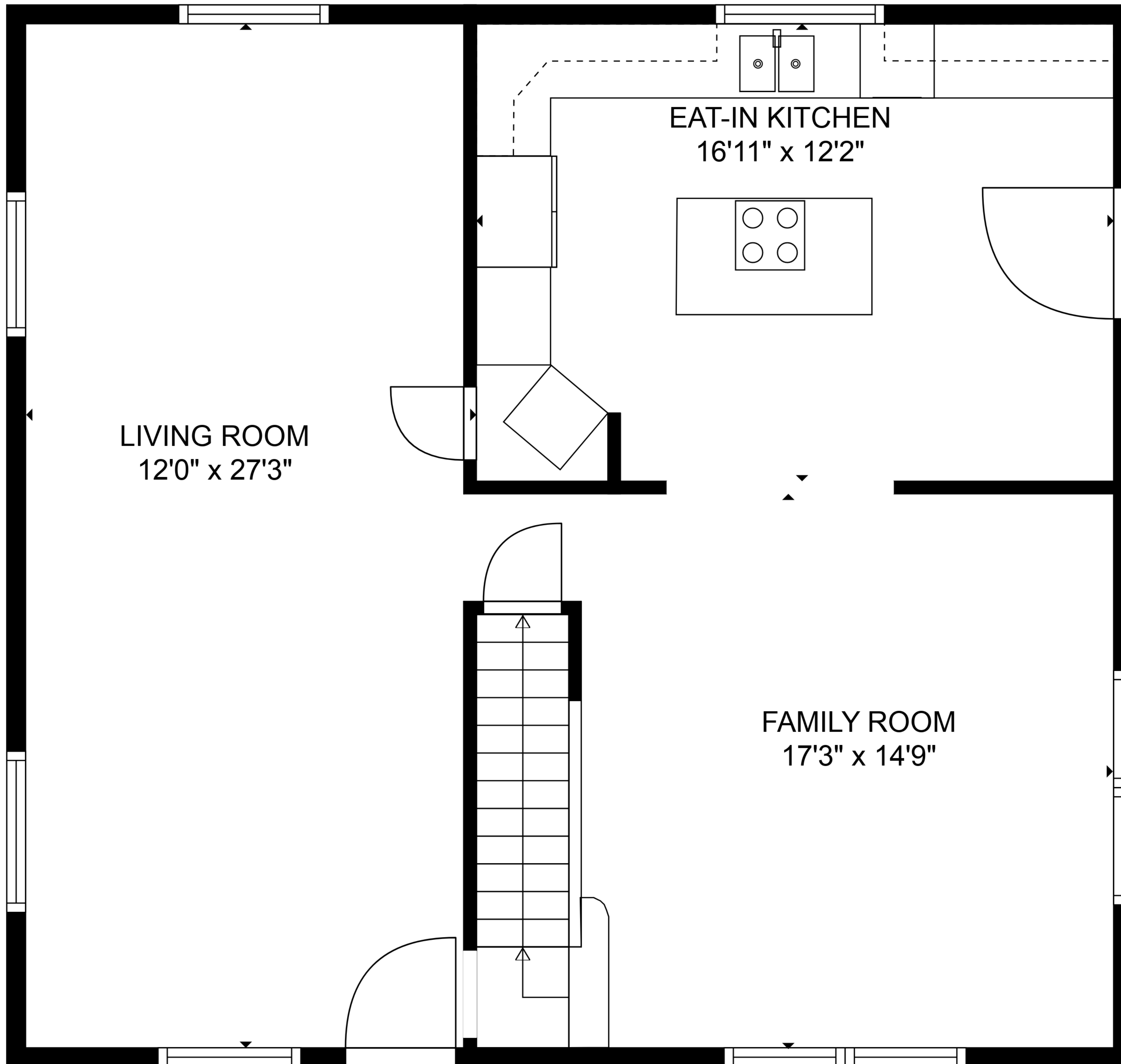


TOTAL: 1577 sq. ft

BELOW GROUND: 0 sq. ft, FLOOR 2: 789 sq. ft, FLOOR 3: 788 sq. ft, FLOOR 4: 0 sq. ft
 EXCLUDED AREAS: BASEMENT: 670 sq. ft, LAUNDRY: 70 sq. ft, LOW CEILING: 391 sq. ft,
 ATTIC: 397 sq. ft, WALLS: 226 sq. ft

MEASUREMENTS ARE DEEMED RELIABLE BUT ARE NOT GUARANTEED.



LIVING ROOM
12'0" x 27'3"

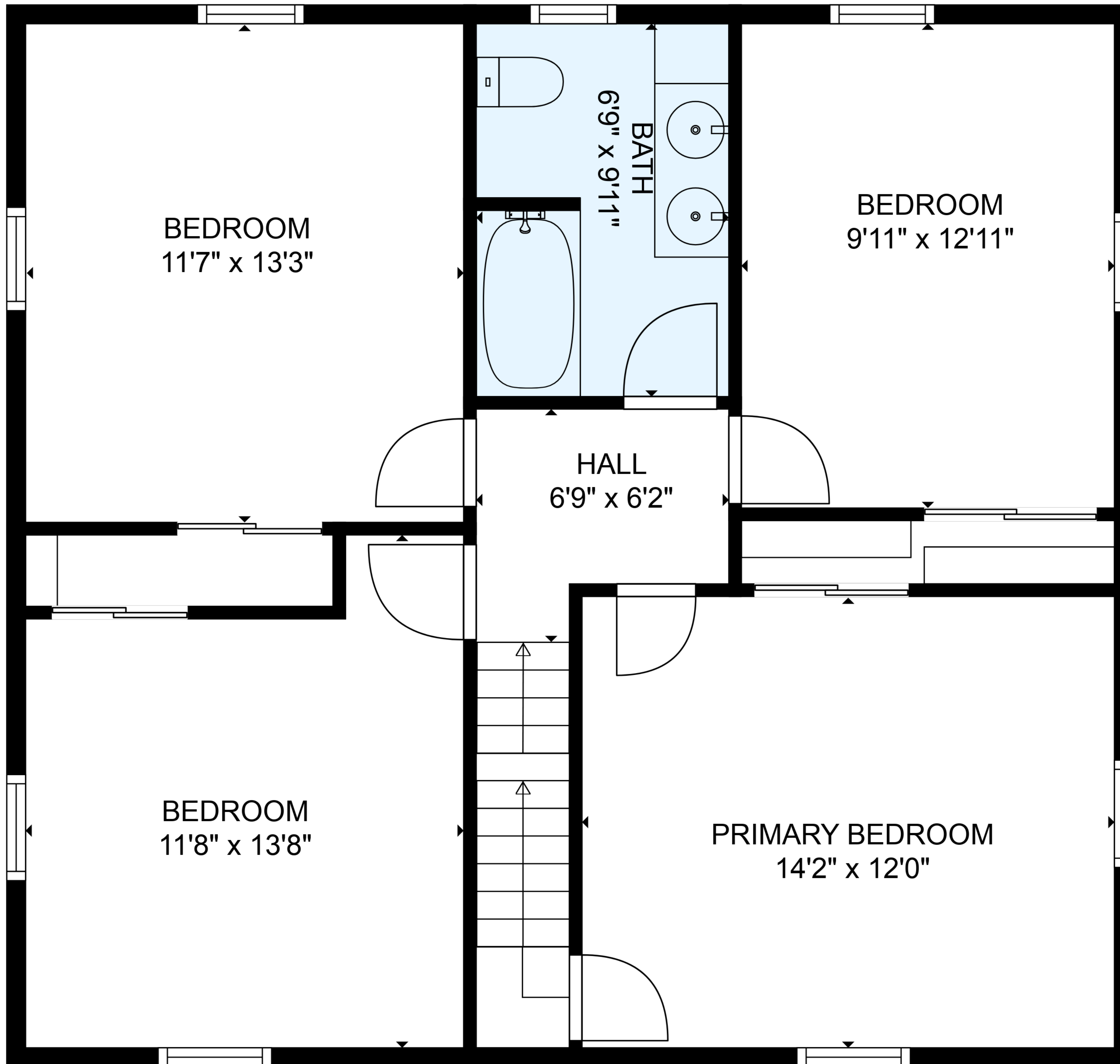
EAT-IN KITCHEN
16'11" x 12'2"

FAMILY ROOM
17'3" x 14'9"

TOTAL: 1577 sq. ft

BELOW GROUND: 0 sq. ft, FLOOR 2: 789 sq. ft, FLOOR 3: 788 sq. ft, FLOOR 4: 0 sq. ft
EXCLUDED AREAS: BASEMENT: 670 sq. ft, LAUNDRY: 70 sq. ft, LOW CEILING: 391 sq. ft,
ATTIC: 397 sq. ft, WALLS: 226 sq. ft

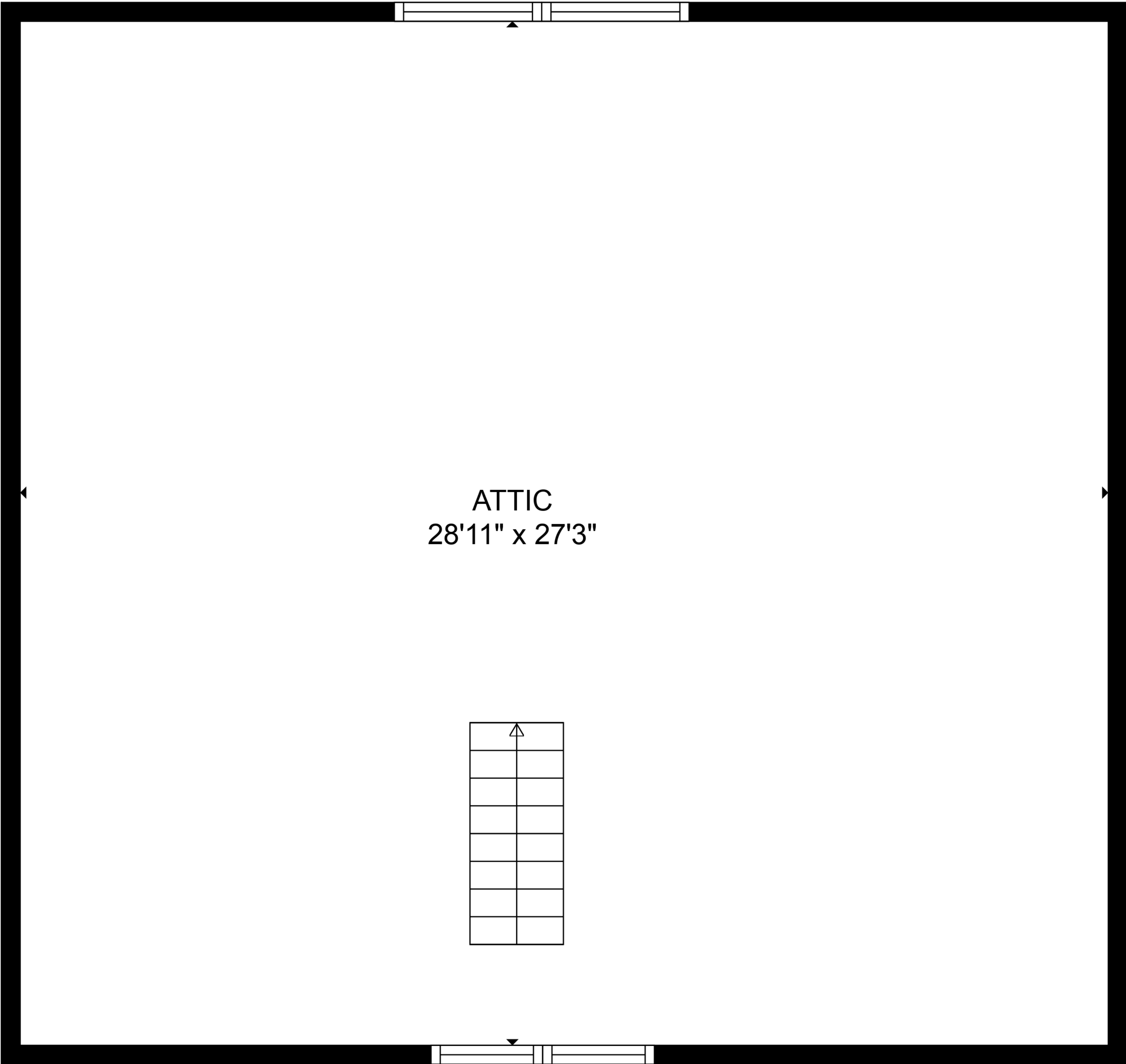
MEASUREMENTS ARE DEEMED RELIABLE BUT ARE NOT GUARANTEED.



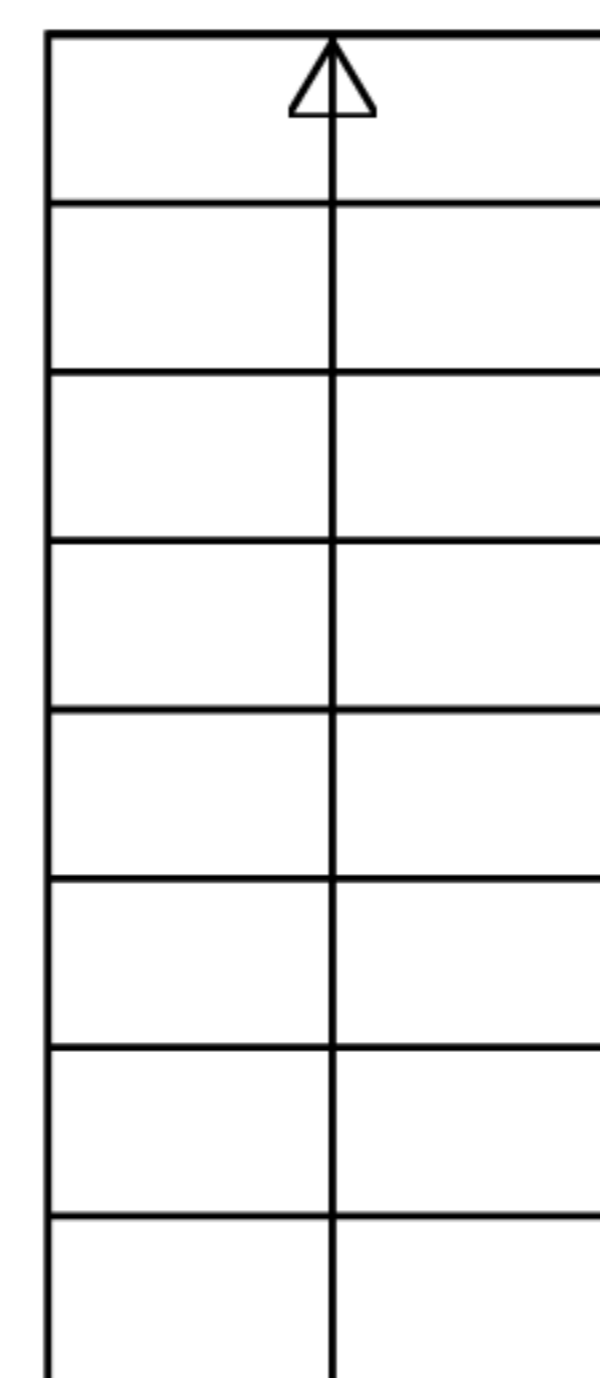
TOTAL: 1577 sq. ft

BELOW GROUND: 0 sq. ft, FLOOR 2: 789 sq. ft, FLOOR 3: 788 sq. ft, FLOOR 4: 0 sq. ft
 EXCLUDED AREAS: BASEMENT: 670 sq. ft, LAUNDRY: 70 sq. ft, LOW CEILING: 391 sq. ft,
 ATTIC: 397 sq. ft, WALLS: 226 sq. ft

MEASUREMENTS ARE DEEMED RELIABLE BUT ARE NOT GUARANTEED.



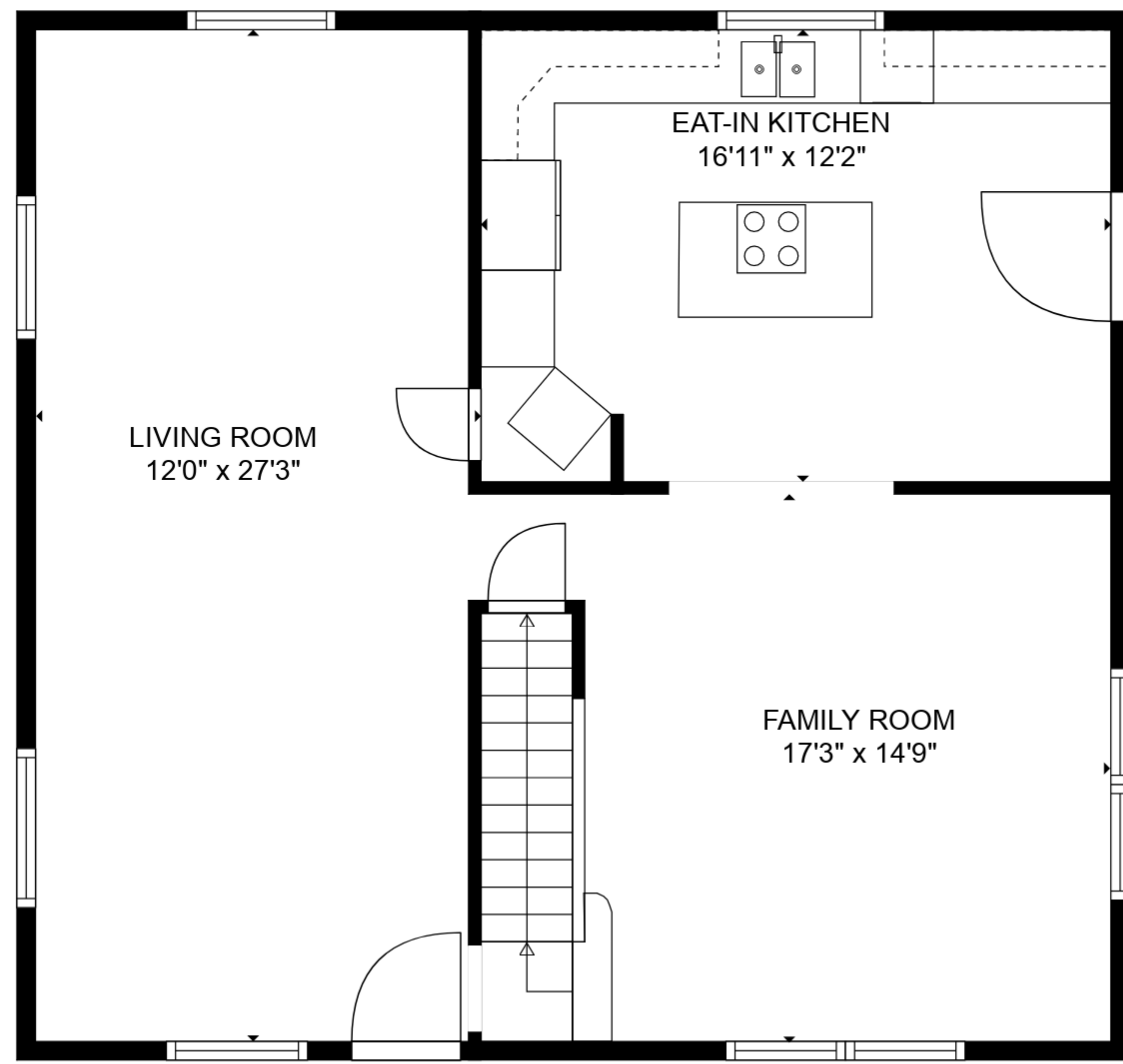
ATTIC
28'11" x 27'3"



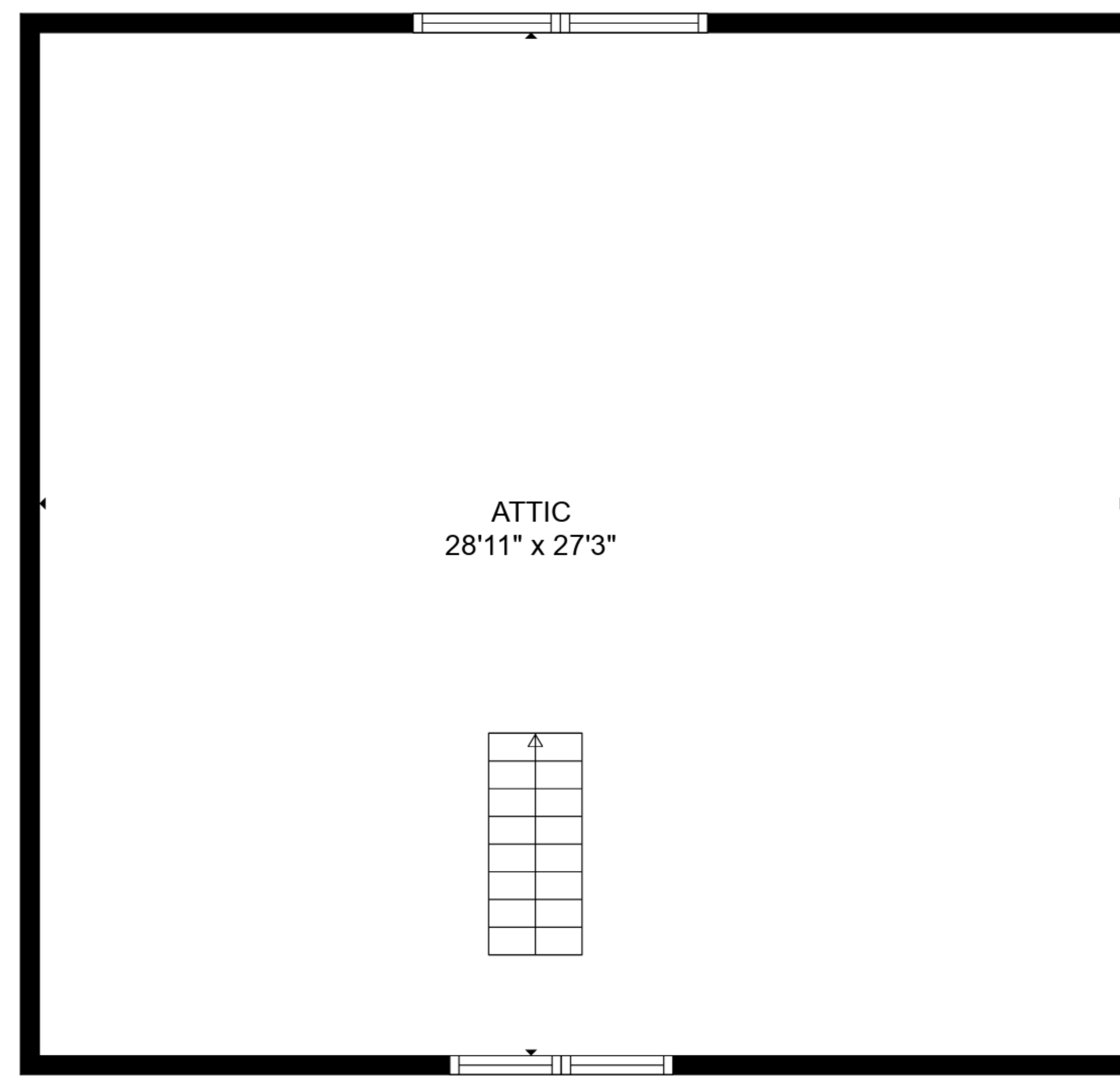
TOTAL: 1577 sq. ft

BELOW GROUND: 0 sq. ft, FLOOR 2: 789 sq. ft, FLOOR 3: 788 sq. ft, FLOOR 4: 0 sq. ft
EXCLUDED AREAS: BASEMENT: 670 sq. ft, LAUNDRY: 70 sq. ft, LOW CEILING: 391 sq. ft,
ATTIC: 397 sq. ft, WALLS: 226 sq. ft

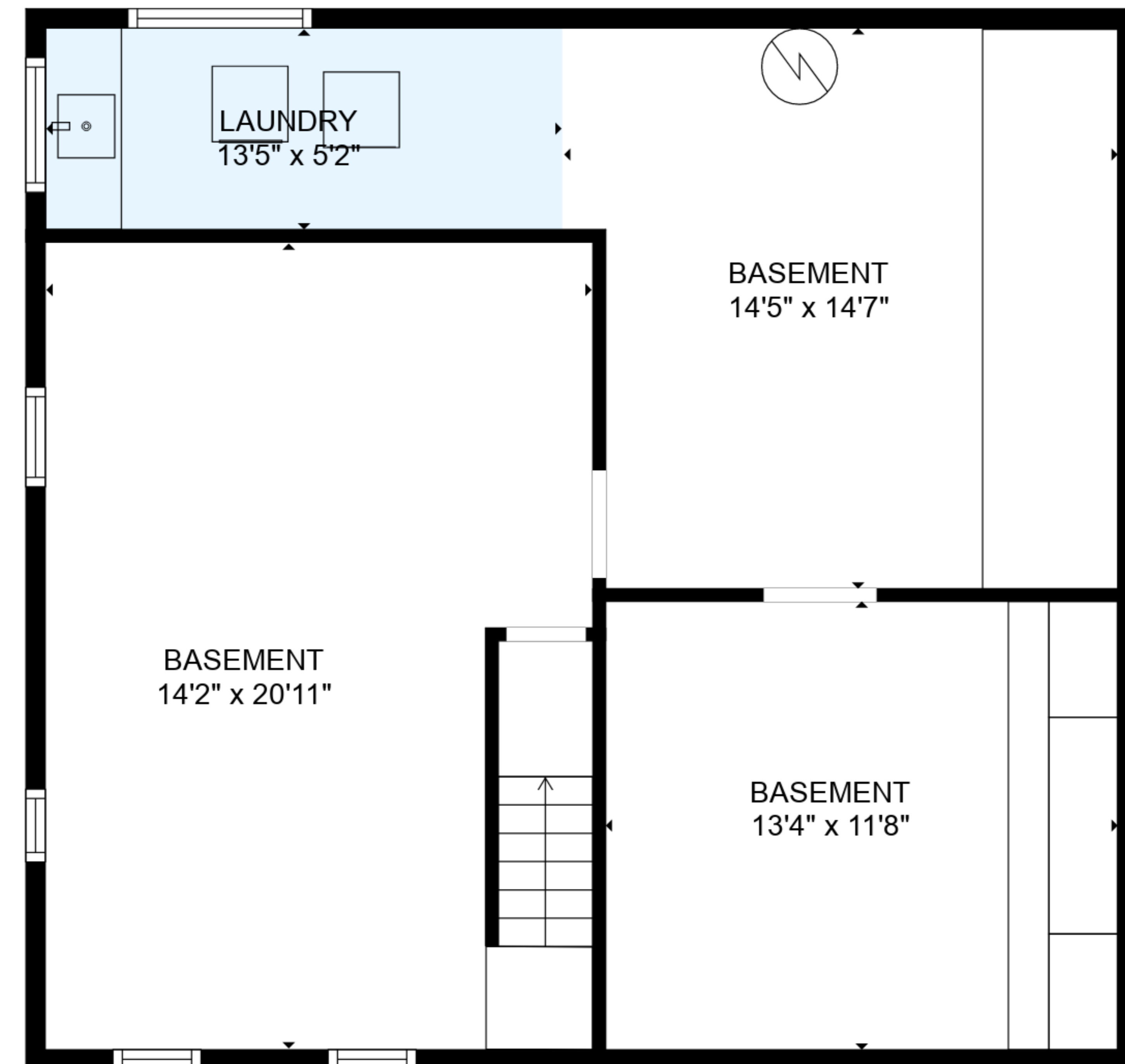
MEASUREMENTS ARE DEEMED RELIABLE BUT ARE NOT GUARANTEED.



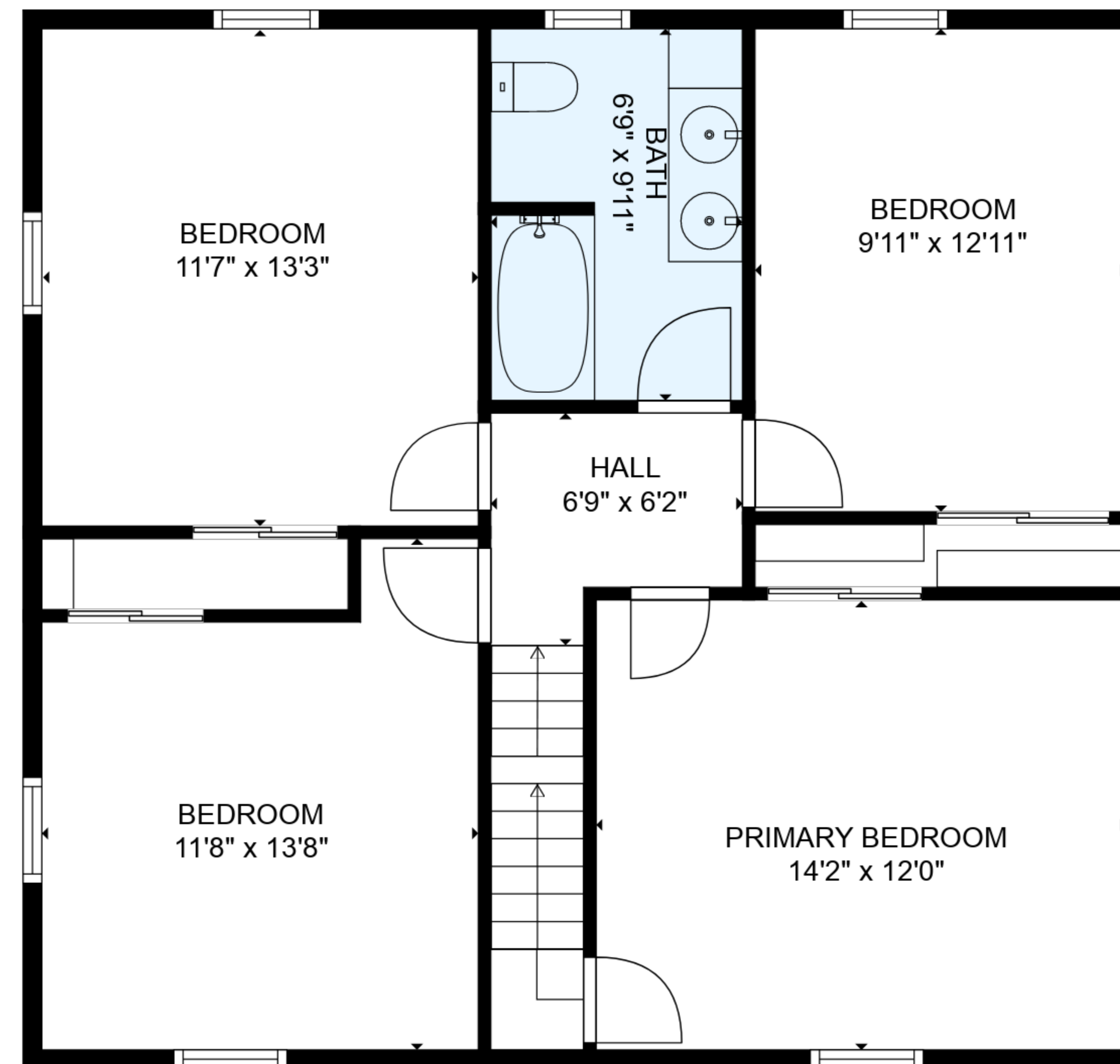
FLOOR 2



FLOOR 4



FLOOR 1



FLOOR 3

TOTAL: 1577 sq. ft
 BELOW GROUND: 0 sq. ft, FLOOR 2: 789 sq. ft, FLOOR 3: 788 sq. ft, FLOOR 4: 0 sq. ft
 EXCLUDED AREAS: BASEMENT: 670 sq. ft, LAUNDRY: 70 sq. ft, LOW CEILING: 391 sq. ft,
 ATTIC: 397 sq. ft, WALLS: 226 sq. ft

MEASUREMENTS ARE DEEMED RELIABLE BUT ARE NOT GUARANTEED.