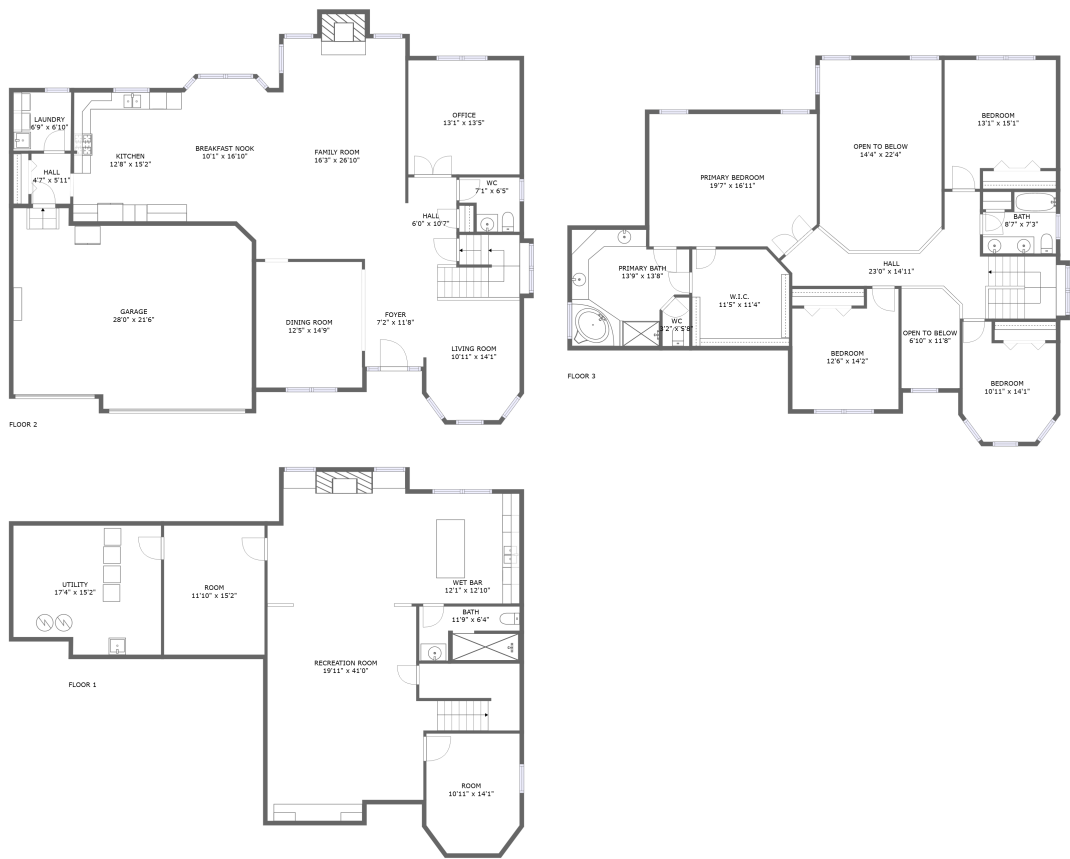




Home report


591 Cole Drive, South Elgin, Kane County, Illinois, United States, 60177





Property summary


 **1** Garages


 **4** Bedrooms

 **3** Bathrooms

 **1** Half baths

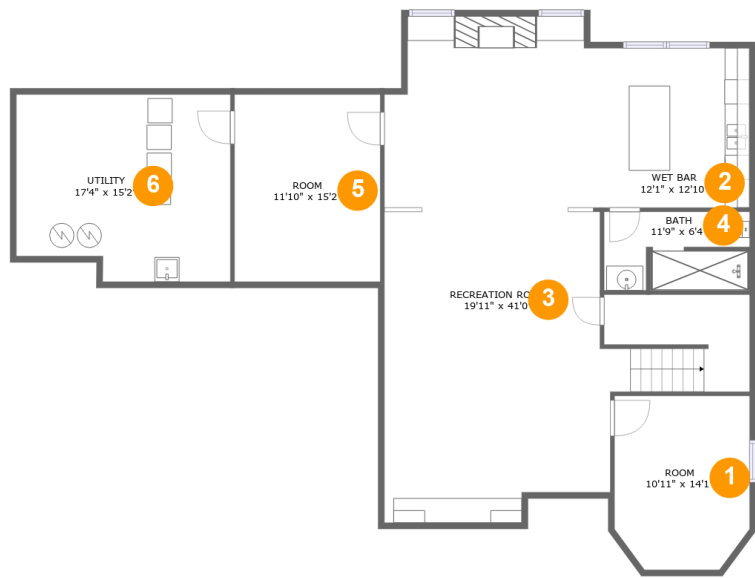
 **3** Floors

 **5,047** Gross living area sqft

 **6,089** Total sqft

Home report

591 Cole Drive, South Elgin, Kane County, Illinois, United States, 60177



Room dimensions

Floor 1 Total sqft: 1723 Living area: 1723

#		Dimensions	sqft	Counted as living area
1	Room	10'11" x 14'1"	146 sq. ft	Yes
2	Wet Bar	12'1" x 12'10"	156 sq. ft	Yes
3	Recreation Room	19'11" x 41'0"	782 sq. ft	Yes
4	Bath	11'9" x 6'4"	72 sq. ft	Yes
5	Room	11'10" x 15'2"	179 sq. ft	Yes
6	Utility	17'4" x 15'2"	248 sq. ft	Yes

Home report

591 Cole Drive, South Elgin, Kane County, Illinois, United States, 60177



Room dimensions

Floor 2

Total sqft: 2413 Living area: 1773

#		Dimensions	sqft	Counted as living area
7	Hall	6'0" x 10'7"	62 sq. ft	Yes
8	Kitchen	12'8" x 15'2"	191 sq. ft	Yes
9	Garage	28'0" x 21'6"	594 sq. ft	No
10	Laundry	6'9" x 6'10"	46 sq. ft	Yes
11	Office	13'1" x 13'5"	175 sq. ft	Yes
12	Family Room	16'3" x 26'10"	435 sq. ft	Yes
13	Dining Room	12'5" x 14'9"	183 sq. ft	Yes
14	Breakfast Nook	10'1" x 16'10"	167 sq. ft	Yes
15	Foyer	7'2" x 11'8"	83 sq. ft	Yes
16	Hall	4'7" x 5'11"	27 sq. ft	Yes
17	WC	7'1" x 6'5"	38 sq. ft	Yes

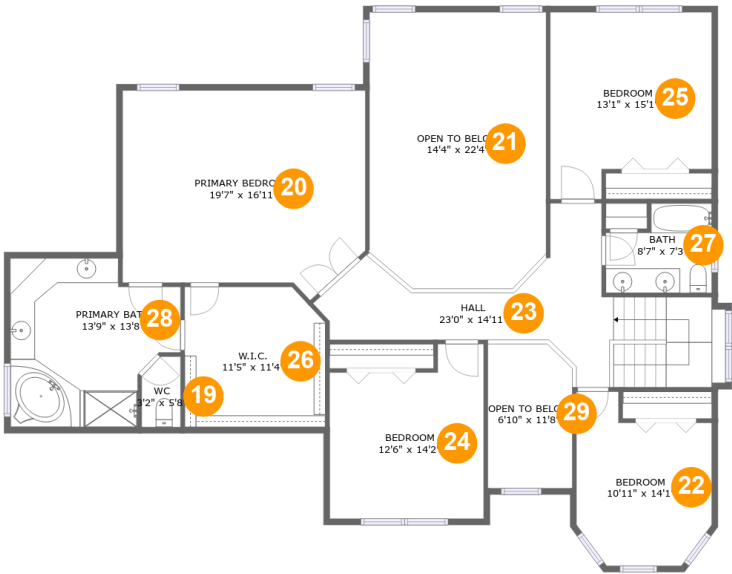
Home report

591 Cole Drive, South Elgin, Kane County, Illinois, United States, 60177

#		Dimensions	sqft	Counted as living area
18	Living Room	10'11" x 14'1"	221 sq. ft	Yes

Home report

591 Cole Drive, South Elgin, Kane County, Illinois, United States, 60177



Room dimensions

Floor 3 Total sqft: 1953 Living area: 1551

#		Dimensions	sqft	Counted as living area
19	WC	3'2" x 5'8"	17 sq. ft	Yes
20	Primary Bedroom	19'7" x 16'11"	304 sq. ft	Yes
21	Open To Below	14'4" x 22'4"	311 sq. ft	No
22	Bedroom	10'11" x 14'1"	127 sq. ft	Yes
23	Hall	23'0" x 14'11"	222 sq. ft	Yes
24	Bedroom	12'6" x 14'2"	156 sq. ft	Yes
25	Bedroom	13'1" x 15'1"	176 sq. ft	Yes
26	W.I.C.	11'5" x 11'4"	125 sq. ft	Yes
27	Bath	8'7" x 7'3"	53 sq. ft	Yes
28	Primary Bath	13'9" x 13'8"	157 sq. ft	Yes
29	Open To Below	6'10" x 11'8"	78 sq. ft	No

1 Floor 1 - Room



Dimensions: 10'11" x 14'1"
Area: 146 sq. ft
Counted as living area: Yes

Heated: Yes
Finished: Yes
Enclosed: Yes
Contiguous: Yes
Permitted: Yes
Wet space: No
Addition: No
Conversion: No

2 Floor 1 - Wet Bar

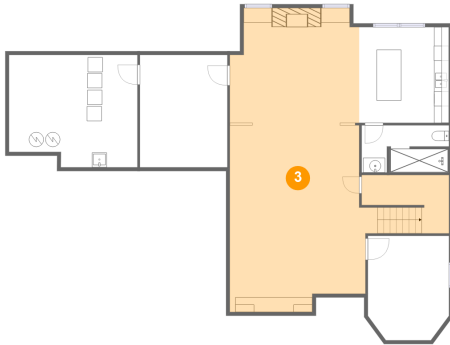


Dimensions: 12'1" x 12'10"
Area: 156 sq. ft
Counted as living area: Yes

Heated: Yes
Finished: Yes
Enclosed: Yes
Contiguous: Yes
Permitted: Yes
Wet space: No
Addition: No
Conversion: No

591 Cole Drive, South Elgin, Kane County, Illinois, United States, 60177

3 Floor 1 - Recreation Room



Dimensions: 19'11" x 41'0"
Area: 782 sq. ft
Counted as living area: Yes

Heated: Yes
Finished: Yes
Enclosed: Yes
Contiguous: Yes
Permitted: Yes
Wet space: No
Addition: No
Conversion: No

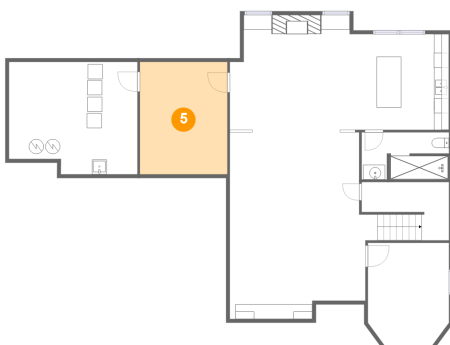
4 Floor 1 - Bath



Dimensions: 11'9" x 6'4"
Area: 72 sq. ft
Counted as living area: Yes

Heated: Yes
Finished: Yes
Enclosed: Yes
Contiguous: Yes
Permitted: Yes
Wet space: Yes
Addition: No
Conversion: No

5 Floor 1 - Room

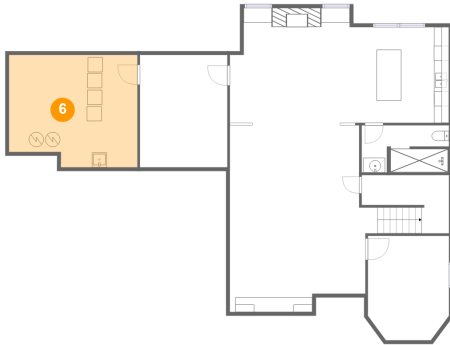


Dimensions: 11'10" x 15'2"
Area: 179 sq. ft
Counted as living area: Yes

Heated: Yes
Finished: Yes
Enclosed: Yes
Contiguous: Yes
Permitted: Yes
Wet space: No
Addition: No
Conversion: No

591 Cole Drive, South Elgin, Kane County, Illinois, United States, 60177

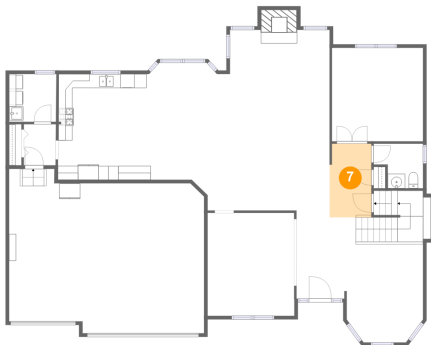
6 Floor 1 - Utility



Dimensions: 17'4" x 15'2"
Area: 248 sq. ft
Counted as living area: Yes

Heated: Yes
Finished: Yes
Enclosed: Yes
Contiguous: Yes
Permitted: Yes
Wet space: No
Addition: No
Conversion: No

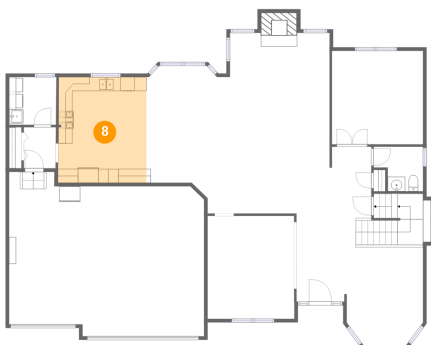
7 Floor 2 - Hall



Dimensions: 6'0" x 10'7"
Area: 62 sq. ft
Counted as living area: Yes

Heated: Yes
Finished: Yes
Enclosed: Yes
Contiguous: Yes
Permitted: Yes
Wet space: No
Addition: No
Conversion: No

8 Floor 2 - Kitchen

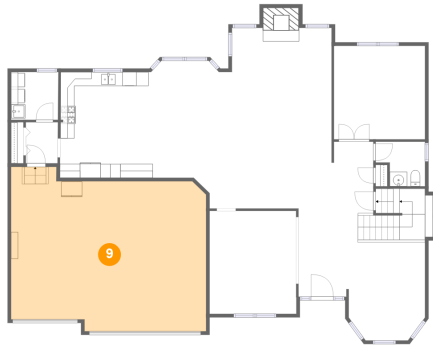


Dimensions: 12'8" x 15'2"
Area: 191 sq. ft
Counted as living area: Yes

Heated: Yes
Finished: Yes
Enclosed: Yes
Contiguous: Yes
Permitted: Yes
Wet space: No
Addition: No
Conversion: No

591 Cole Drive, South Elgin, Kane County, Illinois, United States, 60177

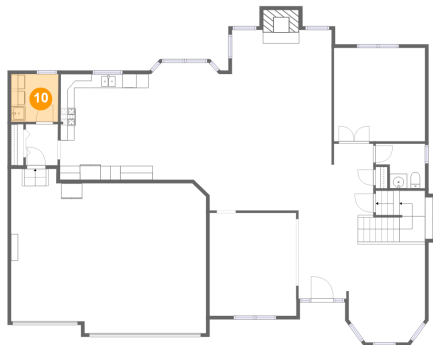
9 Floor 2 - Garage



Dimensions: 28'0" x 21'6"
Area: 594 sq. ft
Counted as living area: No

Heated: No
Finished: No
Enclosed: Yes
Contiguous: Yes
Permitted: Yes
Wet space: No
Addition: No
Conversion: No

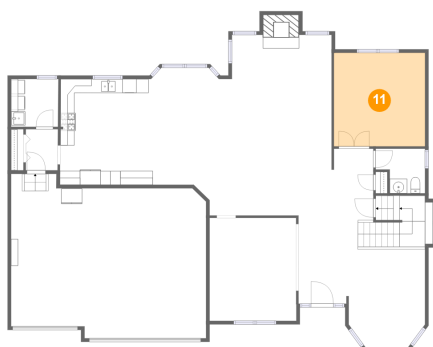
10 Floor 2 - Laundry



Dimensions: 6'9" x 6'10"
Area: 46 sq. ft
Counted as living area: Yes

Heated: Yes
Finished: Yes
Enclosed: Yes
Contiguous: Yes
Permitted: Yes
Wet space: No
Addition: No
Conversion: No

11 Floor 2 - Office

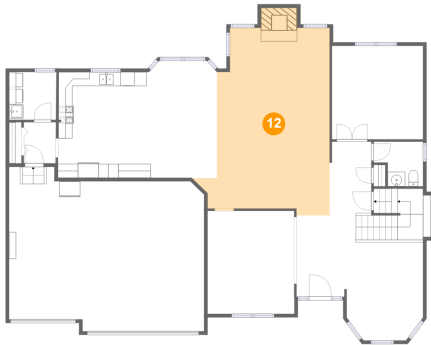


Dimensions: 13'1" x 13'5"
Area: 175 sq. ft
Counted as living area: Yes

Heated: Yes
Finished: Yes
Enclosed: Yes
Contiguous: Yes
Permitted: Yes
Wet space: No
Addition: No
Conversion: No

591 Cole Drive, South Elgin, Kane County, Illinois, United States, 60177

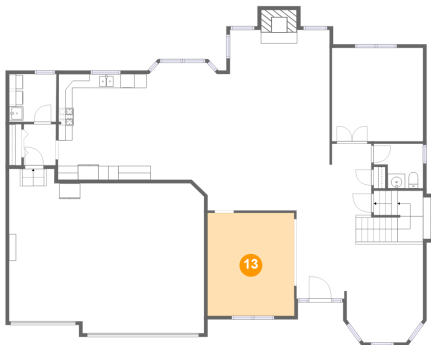
12 Floor 2 - Family Room



Dimensions: 16'3" x 26'10"
Area: 435 sq. ft
Counted as living area: Yes

Heated: Yes
Finished: Yes
Enclosed: Yes
Contiguous: Yes
Permitted: Yes
Wet space: No
Addition: No
Conversion: No

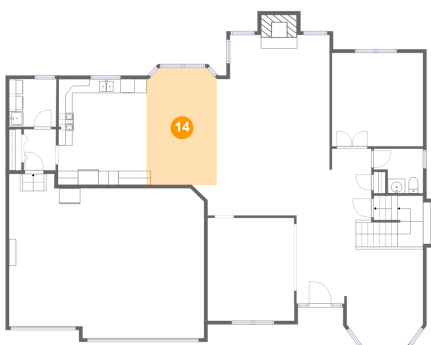
13 Floor 2 - Dining Room



Dimensions: 12'5" x 14'9"
Area: 183 sq. ft
Counted as living area: Yes

Heated: Yes
Finished: Yes
Enclosed: Yes
Contiguous: Yes
Permitted: Yes
Wet space: No
Addition: No
Conversion: No

14 Floor 2 - Breakfast Nook

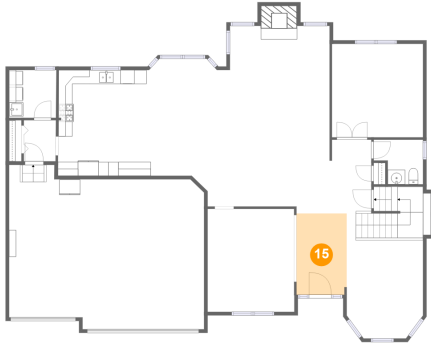


Dimensions: 10'1" x 16'10"
Area: 167 sq. ft
Counted as living area: Yes

Heated: Yes
Finished: Yes
Enclosed: Yes
Contiguous: Yes
Permitted: Yes
Wet space: No
Addition: No
Conversion: No

591 Cole Drive, South Elgin, Kane County, Illinois, United States, 60177

15 Floor 2 - Foyer



Dimensions: 7'2" x 11'8"
Area: 83 sq. ft
Counted as living area: Yes

Heated: Yes
Finished: Yes
Enclosed: Yes
Contiguous: Yes
Permitted: Yes
Wet space: No
Addition: No
Conversion: No

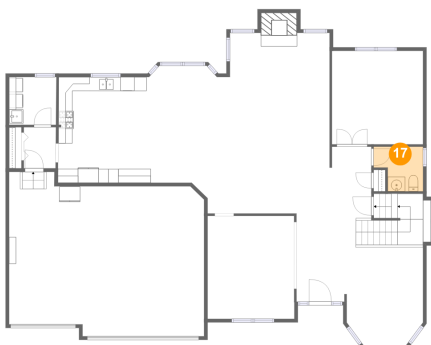
16 Floor 2 - Hall



Dimensions: 4'7" x 5'11"
Area: 27 sq. ft
Counted as living area: Yes

Heated: Yes
Finished: Yes
Enclosed: Yes
Contiguous: Yes
Permitted: Yes
Wet space: No
Addition: No
Conversion: No

17 Floor 2 - WC

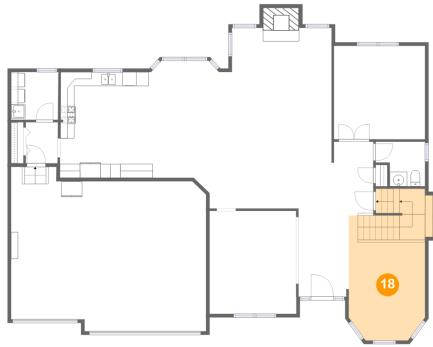


Dimensions: 7'1" x 6'5"
Area: 38 sq. ft
Counted as living area: Yes

Heated: Yes
Finished: Yes
Enclosed: Yes
Contiguous: Yes
Permitted: Yes
Wet space: Yes
Addition: No
Conversion: No

591 Cole Drive, South Elgin, Kane County, Illinois, United States,
60177

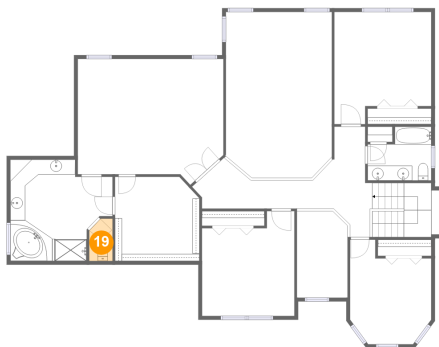
18 Floor 2 - Living Room



Dimensions: 10'11" x 14'1"
Area: 221 sq. ft
Counted as living area: Yes

Heated: Yes
Finished: Yes
Enclosed: Yes
Contiguous: Yes
Permitted: Yes
Wet space: No
Addition: No
Conversion: No

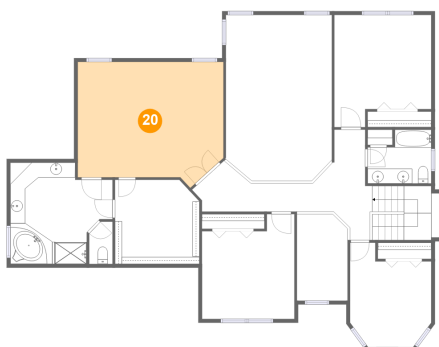
19 Floor 3 - WC



Dimensions: 3'2" x 5'8"
Area: 17 sq. ft
Counted as living area: Yes

Heated: Yes
Finished: Yes
Enclosed: Yes
Contiguous: Yes
Permitted: Yes
Wet space: Yes
Addition: No
Conversion: No

20 Floor 3 - Primary Bedroom

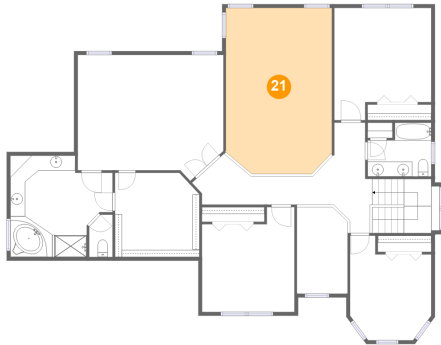


Dimensions: 19'7" x 16'11"
Area: 304 sq. ft
Counted as living area: Yes

Heated: Yes
Finished: Yes
Enclosed: Yes
Contiguous: Yes
Permitted: Yes
Wet space: No
Addition: No
Conversion: No

591 Cole Drive, South Elgin, Kane County, Illinois, United States, 60177

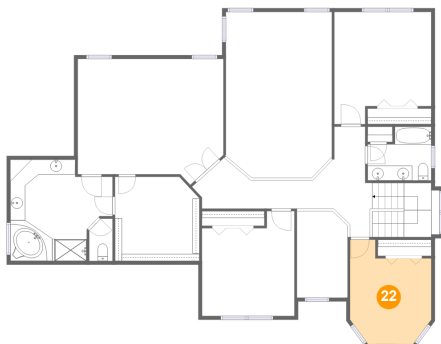
21 Floor 3 - Open To Below



Dimensions: 14'4" x 22'4"
Area: 311 sq. ft
Counted as living area: No

Heated: No
Finished: No
Enclosed: No
Contiguous: Yes
Permitted: No
Wet space: No
Addition: No
Conversion: No

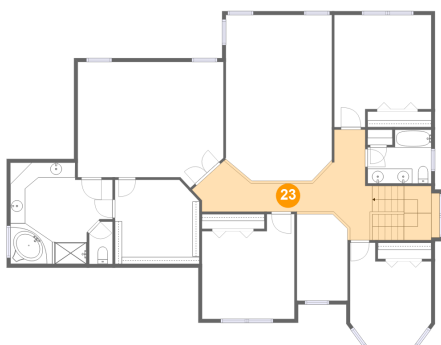
22 Floor 3 - Bedroom



Dimensions: 10'11" x 14'1"
Area: 127 sq. ft
Counted as living area: Yes

Heated: Yes
Finished: Yes
Enclosed: Yes
Contiguous: Yes
Permitted: Yes
Wet space: No
Addition: No
Conversion: No

23 Floor 3 - Hall

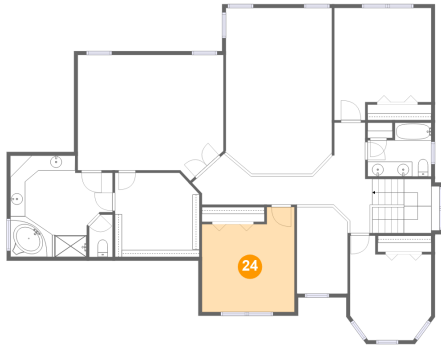


Dimensions: 23'0" x 14'11"
Area: 222 sq. ft
Counted as living area: Yes

Heated: Yes
Finished: Yes
Enclosed: Yes
Contiguous: Yes
Permitted: Yes
Wet space: No
Addition: No
Conversion: No

591 Cole Drive, South Elgin, Kane County, Illinois, United States, 60177

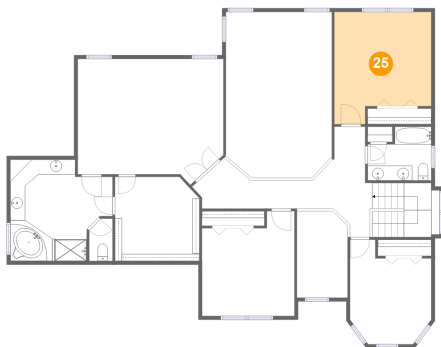
24 Floor 3 - Bedroom



Dimensions: 12'6" x 14'2"
Area: 156 sq. ft
Counted as living area: Yes

Heated: Yes
Finished: Yes
Enclosed: Yes
Contiguous: Yes
Permitted: Yes
Wet space: No
Addition: No
Conversion: No

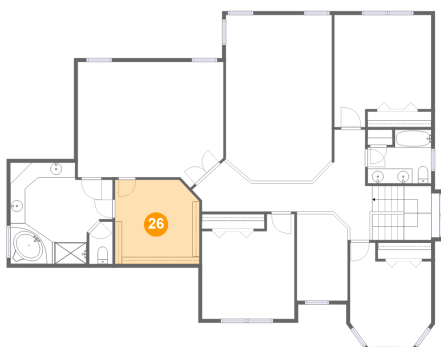
25 Floor 3 - Bedroom



Dimensions: 13'1" x 15'1"
Area: 176 sq. ft
Counted as living area: Yes

Heated: Yes
Finished: Yes
Enclosed: Yes
Contiguous: Yes
Permitted: Yes
Wet space: No
Addition: No
Conversion: No

26 Floor 3 - W.I.C.

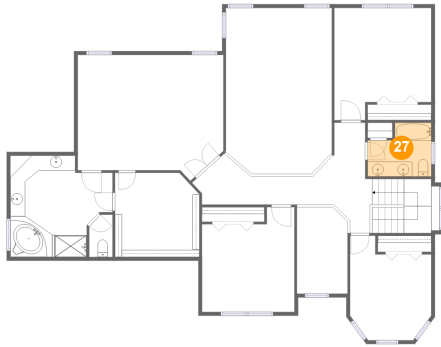


Dimensions: 11'5" x 11'4"
Area: 125 sq. ft
Counted as living area: Yes

Heated: Yes
Finished: Yes
Enclosed: Yes
Contiguous: Yes
Permitted: Yes
Wet space: No
Addition: No
Conversion: No

591 Cole Drive, South Elgin, Kane County, Illinois, United States, 60177

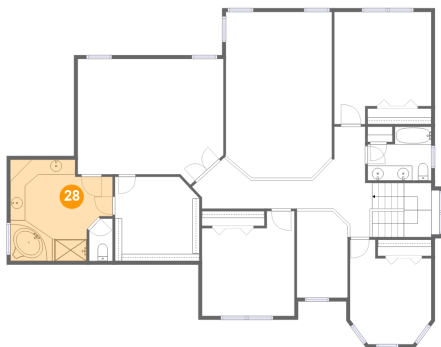
27 Floor 3 - Bath



Dimensions: 8'7" x 7'3"
Area: 53 sq. ft
Counted as living area: Yes

Heated: Yes
Finished: Yes
Enclosed: Yes
Contiguous: Yes
Permitted: Yes
Wet space: Yes
Addition: No
Conversion: No

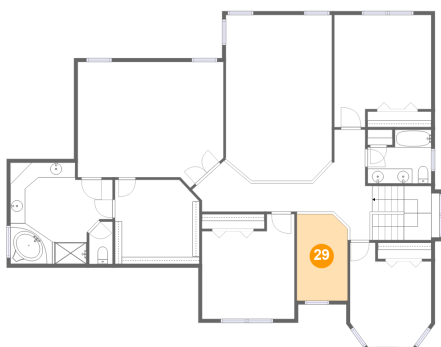
28 Floor 3 - Primary Bath



Dimensions: 13'9" x 13'8"
Area: 157 sq. ft
Counted as living area: Yes

Heated: Yes
Finished: Yes
Enclosed: Yes
Contiguous: Yes
Permitted: Yes
Wet space: Yes
Addition: No
Conversion: No

29 Floor 3 - Open To Below



Dimensions: 6'10" x 11'8"
Area: 78 sq. ft
Counted as living area: No

Heated: No
Finished: No
Enclosed: No
Contiguous: Yes
Permitted: No
Wet space: No
Addition: No
Conversion: No