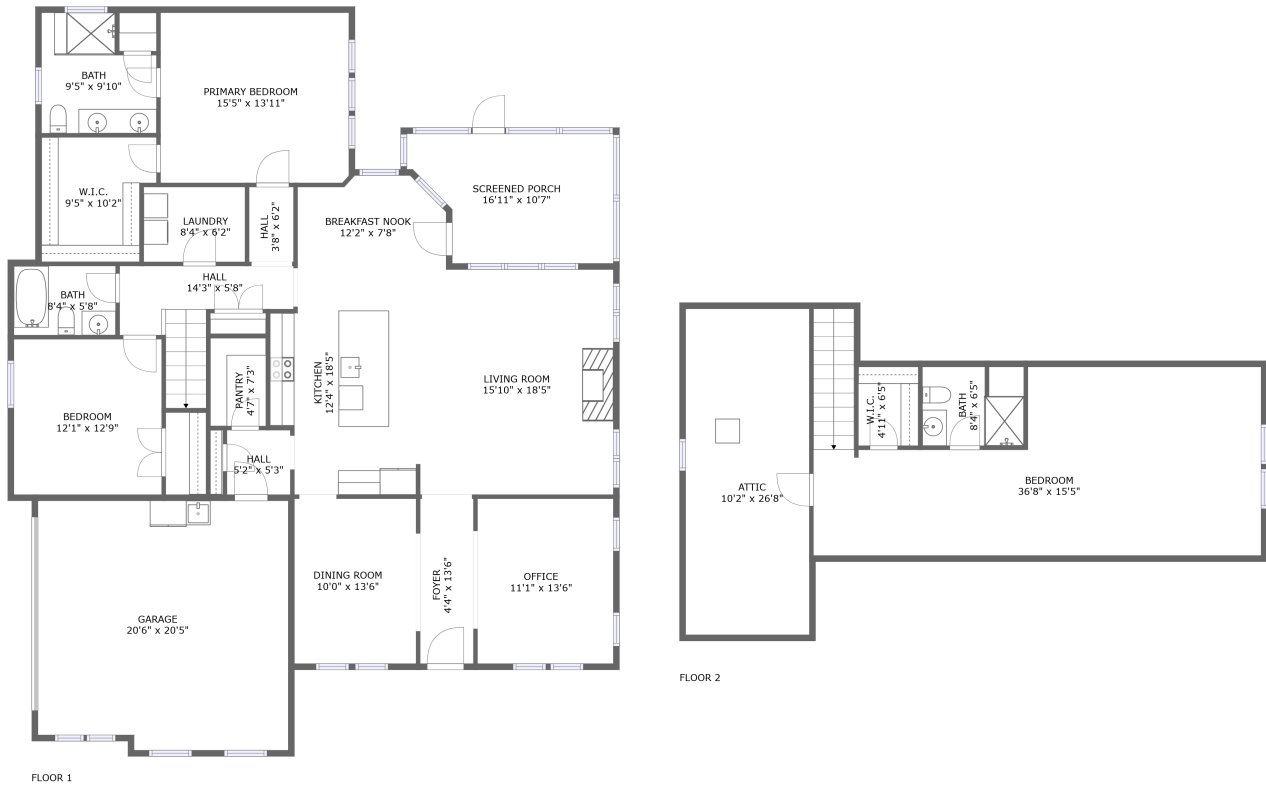


6700 Liege HI, Moseley, VA, US



Property summary


 **1** Garages

 **3** Bedrooms

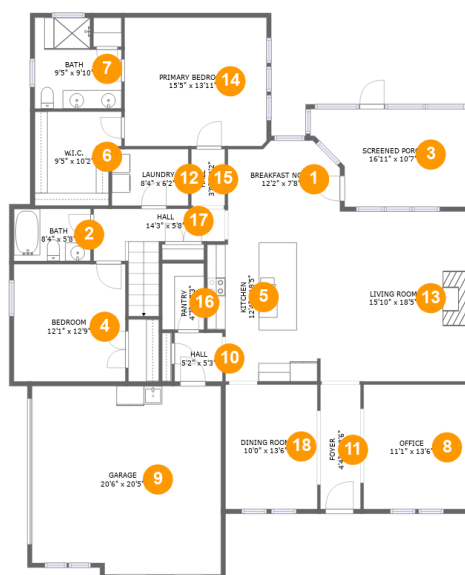
 **3** Bathrooms

 **0** Half baths

 **2** Floors

 **2,593** Gross living area sqft

 **3,495** Total sqft

6700 Liege HI, Moseley, VA, US**Room dimensions****Floor 1****Total sqft: 2561 Living area: 1956**

#		Dimensions	sqft	Counted as living area
1	Breakfast Nook	12'2" x 7'8"	85 sq. ft	Yes
2	Bath	8'4" x 5'8"	47 sq. ft	Yes
3	Screened Porch	16'11" x 10'7"	156 sq. ft	No
4	Bedroom	12'1" x 12'9"	154 sq. ft	Yes
5	Kitchen	12'4" x 18'5"	207 sq. ft	Yes
6	W.I.C.	9'5" x 10'2"	87 sq. ft	Yes
7	Bath	9'5" x 9'10"	81 sq. ft	Yes
8	Office	11'1" x 13'6"	150 sq. ft	Yes
9	Garage	20'6" x 20'5"	409 sq. ft	No
10	Hall	5'2" x 5'3"	27 sq. ft	Yes
11	Foyer	4'4" x 13'6"	59 sq. ft	Yes

6700 Liege HI,Moseley,VA,US

#		Dimensions	sqft	Counted as living area
12	Laundry	8'4" x 6'2"	51 sq. ft	Yes
13	Living Room	15'10" x 18'5"	292 sq. ft	Yes
14	Primary Bedroom	15'5" x 13'11"	215 sq. ft	Yes
15	Hall	3'8" x 6'2"	22 sq. ft	Yes
16	Pantry	4'7" x 7'3"	33 sq. ft	Yes
17	Hall	14'3" x 5'8"	85 sq. ft	Yes
18	Dining Room	10'0" x 13'6"	135 sq. ft	Yes

6700 Liege HI, Moseley, VA, US**Room dimensions**

Floor 2

Total sqft: 934 Living area: 637

#		Dimensions	sqft	Counted as living area
19	Bath	8'4" x 6'5"	53 sq. ft	Yes
20	W.I.C.	4'11" x 6'5"	32 sq. ft	Yes
21	Attic	10'2" x 26'8"	184 sq. ft	No
22	Bedroom	36'8" x 15'5"	486 sq. ft	Yes

6700 Liege HI, Moseley, VA, US

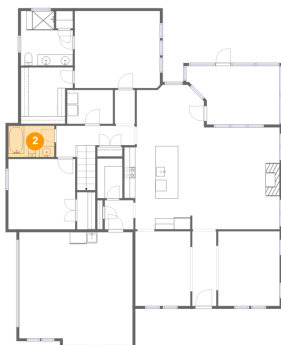
1 Floor 1 - Breakfast Nook



Dimensions: 12'2" x 7'8"
Area: 85 sq. ft
Counted as living area: Yes

Heated: Yes
Finished: Yes
Enclosed: Yes
Contiguous: Yes
Permitted: Yes
Wet space: No
Addition: No
Conversion: No

2 Floor 1 - Bath



Dimensions: 8'4" x 5'8"
Area: 47 sq. ft
Counted as living area: Yes

Heated: Yes
Finished: Yes
Enclosed: Yes
Contiguous: Yes
Permitted: Yes
Wet space: Yes
Addition: No
Conversion: No

6700 Liege HI, Moseley, VA, US

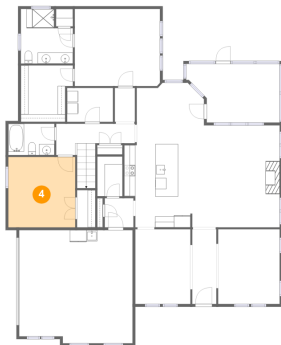
3 Floor 1 - Screened Porch



Dimensions: 16'11" x 10'7"
Area: 156 sq. ft
Counted as living area: No

Heated: No
Finished: Yes
Enclosed: No
Contiguous: Yes
Permitted: Yes
Wet space: No
Addition: No
Conversion: No

4 Floor 1 - Bedroom



Dimensions: 12'1" x 12'9"
Area: 154 sq. ft
Counted as living area: Yes

Heated: Yes
Finished: Yes
Enclosed: Yes
Contiguous: Yes
Permitted: Yes
Wet space: No
Addition: No
Conversion: No

5 Floor 1 - Kitchen



Dimensions: 12'4" x 18'5"
Area: 207 sq. ft
Counted as living area: Yes

Heated: Yes
Finished: Yes
Enclosed: Yes
Contiguous: Yes
Permitted: Yes
Wet space: No
Addition: No
Conversion: No

6700 Liege HI, Moseley, VA, US

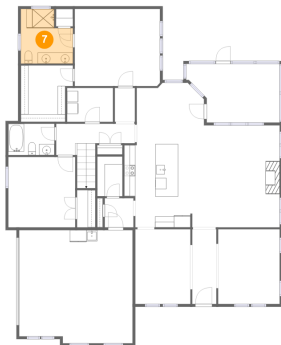
6 Floor 1 - W.I.C.



Dimensions: 9'5" x 10'2"
Area: 87 sq. ft
Counted as living area: Yes

Heated: Yes
Finished: Yes
Enclosed: Yes
Contiguous: Yes
Permitted: Yes
Wet space: No
Addition: No
Conversion: No

7 Floor 1 - Bath



Dimensions: 9'5" x 9'10"
Area: 81 sq. ft
Counted as living area: Yes

Heated: Yes
Finished: Yes
Enclosed: Yes
Contiguous: Yes
Permitted: Yes
Wet space: Yes
Addition: No
Conversion: No

8 Floor 1 - Office



Dimensions: 11'1" x 13'6"
Area: 150 sq. ft
Counted as living area: Yes

Heated: Yes
Finished: Yes
Enclosed: Yes
Contiguous: Yes
Permitted: Yes
Wet space: No
Addition: No
Conversion: No

6700 Liege HI, Moseley, VA, US**9 Floor 1 - Garage**

Dimensions: 20'6" x 20'5"
Area: 409 sq. ft
Counted as living area: No

Heated: No
Finished: No
Enclosed: Yes
Contiguous: Yes
Permitted: Yes
Wet space: No
Addition: No
Conversion: No

10 Floor 1 - Hall

Dimensions: 5'2" x 5'3"
Area: 27 sq. ft
Counted as living area: Yes

Heated: Yes
Finished: Yes
Enclosed: Yes
Contiguous: Yes
Permitted: Yes
Wet space: No
Addition: No
Conversion: No

11 Floor 1 - Foyer

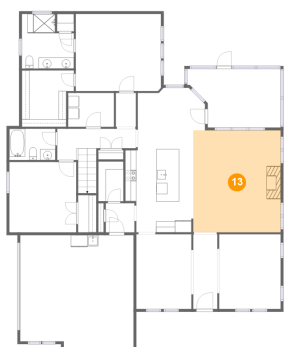
Dimensions: 4'4" x 13'6"
Area: 59 sq. ft
Counted as living area: Yes

Heated: Yes
Finished: Yes
Enclosed: Yes
Contiguous: Yes
Permitted: Yes
Wet space: No
Addition: No
Conversion: No

6700 Liege HI, Moseley, VA, US**12 Floor 1 - Laundry**

Dimensions: 8'4" x 6'2"
Area: 51 sq. ft
Counted as living area: Yes

Heated: Yes
Finished: Yes
Enclosed: Yes
Contiguous: Yes
Permitted: Yes
Wet space: No
Addition: No
Conversion: No

13 Floor 1 - Living Room

Dimensions: 15'10" x 18'5"
Area: 292 sq. ft
Counted as living area: Yes

Heated: Yes
Finished: Yes
Enclosed: Yes
Contiguous: Yes
Permitted: Yes
Wet space: No
Addition: No
Conversion: No

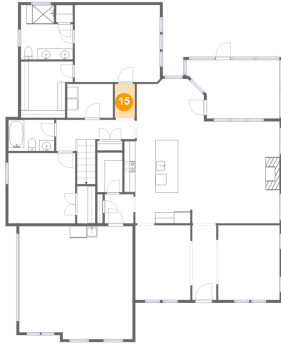
14 Floor 1 - Primary Bedroom

Dimensions: 15'5" x 13'11"
Area: 215 sq. ft
Counted as living area: Yes

Heated: Yes
Finished: Yes
Enclosed: Yes
Contiguous: Yes
Permitted: Yes
Wet space: No
Addition: No
Conversion: No

6700 Liege HI, Moseley, VA, US

15 Floor 1 - Hall



Dimensions: 3'8" x 6'2"
Area: 22 sq. ft
Counted as living area: Yes

Heated: Yes
Finished: Yes
Enclosed: Yes
Contiguous: Yes
Permitted: Yes
Wet space: No
Addition: No
Conversion: No

16 Floor 1 - Pantry



Dimensions: 4'7" x 7'3"
Area: 33 sq. ft
Counted as living area: Yes

Heated: Yes
Finished: Yes
Enclosed: Yes
Contiguous: Yes
Permitted: Yes
Wet space: No
Addition: No
Conversion: No

17 Floor 1 - Hall



Dimensions: 14'3" x 5'8"
Area: 85 sq. ft
Counted as living area: Yes

Heated: Yes
Finished: Yes
Enclosed: Yes
Contiguous: Yes
Permitted: Yes
Wet space: No
Addition: No
Conversion: No

6700 Liege HI, Moseley, VA, US

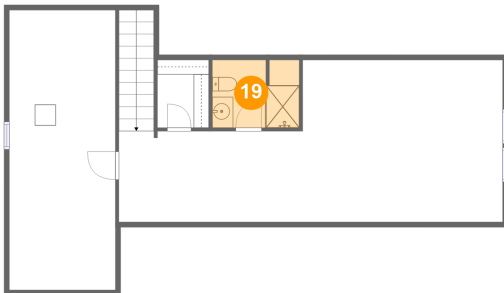
18 Floor 1 - Dining Room



Dimensions: 10'0" x 13'6"
Area: 135 sq. ft
Counted as living area: Yes

Heated: Yes
Finished: Yes
Enclosed: Yes
Contiguous: Yes
Permitted: Yes
Wet space: No
Addition: No
Conversion: No

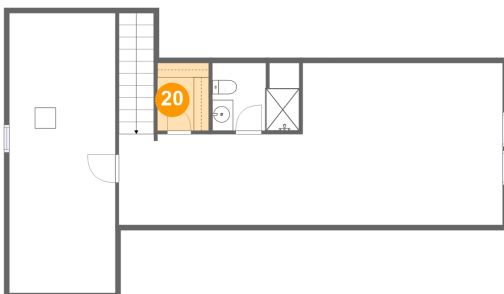
19 Floor 2 - Bath



Dimensions: 8'4" x 6'5"
Area: 53 sq. ft
Counted as living area: Yes

Heated: Yes
Finished: Yes
Enclosed: Yes
Contiguous: Yes
Permitted: Yes
Wet space: Yes
Addition: No
Conversion: No

20 Floor 2 - W.I.C.

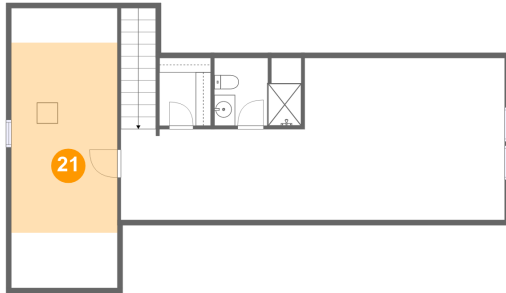


Dimensions: 4'11" x 6'5"
Area: 32 sq. ft
Counted as living area: Yes

Heated: Yes
Finished: Yes
Enclosed: Yes
Contiguous: Yes
Permitted: Yes
Wet space: No
Addition: No
Conversion: No

6700 Liege HI, Moseley, VA, US

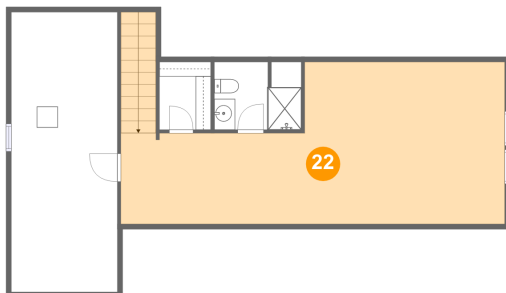
21 Floor 2 - Attic



Dimensions: 10'2" x 26'8"
Area: 184 sq. ft
Counted as living area: No

Heated: No
Finished: No
Enclosed: Yes
Contiguous: Yes
Permitted: Yes
Wet space: No
Addition: No
Conversion: No

22 Floor 2 - Bedroom



Dimensions: 36'8" x 15'5"
Area: 486 sq. ft
Counted as living area: Yes

Heated: Yes
Finished: Yes
Enclosed: Yes
Contiguous: Yes
Permitted: Yes
Wet space: No
Addition: No
Conversion: No