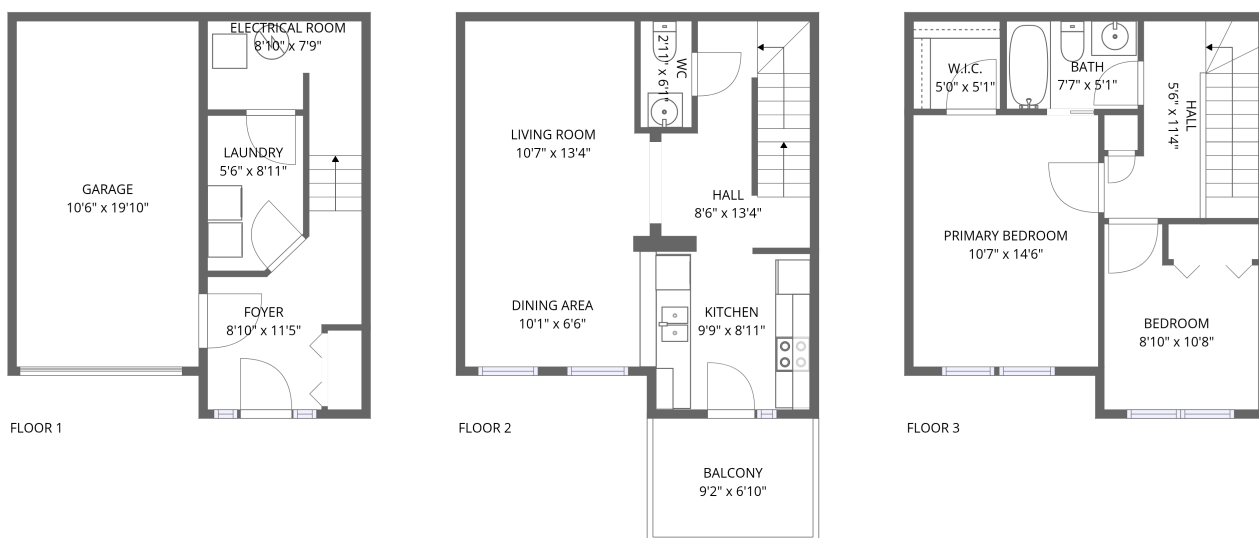


Home report

150 Langlois Way, Stonebridge, Saskatoon, Saskatchewan,  
Canada, S7T 0K8, 553



**Total GLA: 894 sq. ft**

Below Ground: 151 sq. ft, Floor 2: 447 sq. ft, Floor 3: 447 sq. ft

Excluded: Garage 226 sq. ft, Electrical room 70 sq. ft, Balcony 63 sq. ft

## Property summary

 **3** Floors

 **2** Bedrooms

 **1** Bathrooms

Home report

**150 Langlois Way, Stonebridge, Saskatoon, Saskatchewan,  
Canada, S7T 0K8, 553**



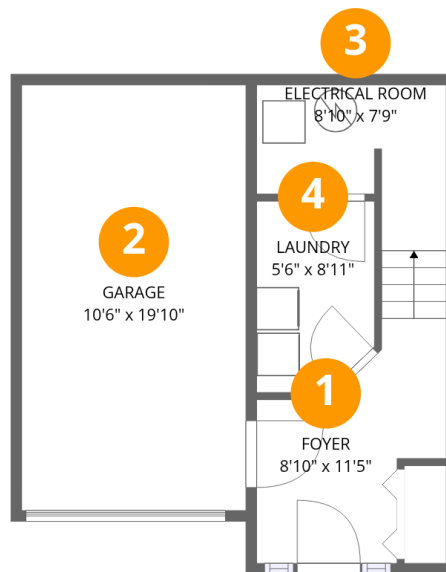
**1**  
Half baths



**1**  
Garages

Home report

150 Langlois Way, Stonebridge, Saskatoon, Saskatchewan,  
Canada, S7T 0K8, 553



## Room dimensions

Floor 1 Below ground

Total:151sqft

Excluded: 296sqft

#		Max Dimensions	sqft	Included
1	Foyer	8'10" x 11'5"	71 sq. ft	Yes
2	Garage	10'6" x 19'10"	208 sq. ft	No
3	Electrical Room	8'10" x 7'9"	62 sq. ft	No
4	Laundry	5'6" x 8'11"	47 sq. ft	Yes

Home report

150 Langlois Way, Stonebridge, Saskatoon, Saskatchewan,  
Canada, S7T 0K8, 553



## Room dimensions

Floor 2

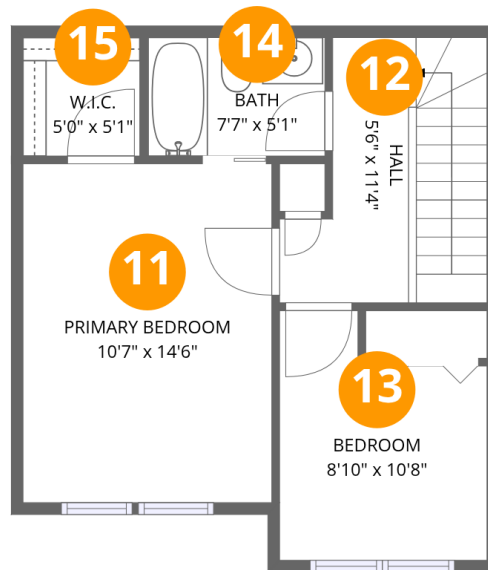
Total:447sqft

Excluded: 63sqft

#		Max Dimensions	sqft	Included
5	Living Room	10'7" x 13'4"	135 sq. ft	Yes
6	Kitchen	9'9" x 8'11"	85 sq. ft	Yes
7	Hall	8'6" x 13'4"	98 sq. ft	Yes
8	WC	2'11" x 6'1"	18 sq. ft	Yes
9	Dining Area	10'1" x 6'6"	65 sq. ft	Yes
10	Balcony	9'2" x 6'10"	63 sq. ft	No

Home report

150 Langlois Way, Stonebridge, Saskatoon, Saskatchewan,  
Canada, S7T 0K8, 553



## Room dimensions

Floor 3

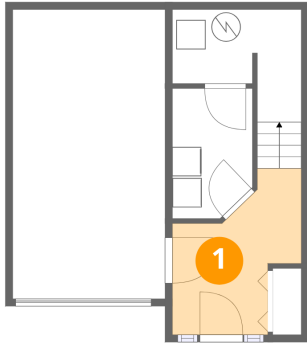
Total:447sqft

Excluded: 0sqft

#		Max Dimensions	sqft	Included
11	Primary Bedroom	10'7" x 14'6"	154 sq. ft	Yes
12	Hall	5'6" x 11'4"	83 sq. ft	Yes
13	Bedroom	8'10" x 10'8"	81 sq. ft	Yes
14	Bath	7'7" x 5'1"	38 sq. ft	Yes
15	W.I.C.	5'0" x 5'1"	25 sq. ft	Yes

150 Langlois Way, Stonebridge, Saskatoon, Saskatchewan,  
Canada, S7T 0K8, 553

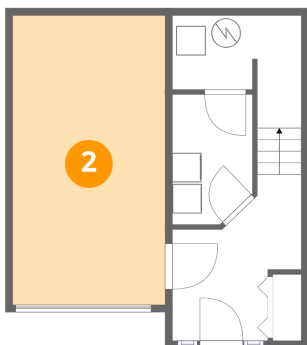
## 1 Floor 1 - Foyer



Max Dimensions: 8'10" x  
11'5"  
Calculated Area: 71 sq. ft  
Included: Yes

Heated: Yes  
Finished: Yes  
Enclosed: Yes  
Contiguous:  
Yes  
Permitted: Yes  
Wet space: No  
Addition: No  
Conversion: No

## 2 Floor 1 - Garage

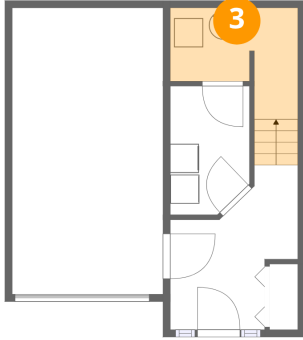


Max Dimensions: 10'6" x  
19'10"  
Calculated Area: 208 sq. ft  
Included: No

Heated: No  
Finished: No  
Enclosed: Yes  
Contiguous:  
Yes  
Permitted: Yes  
Wet space: No  
Addition: No  
Conversion: No

150 Langlois Way, Stonebridge, Saskatoon, Saskatchewan,  
Canada, S7T 0K8, 553

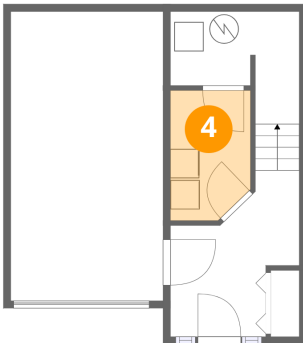
### 3 Floor 1 - Electrical Room



Max Dimensions: 8'10" x 7'9"  
Calculated Area: 62 sq. ft  
Included: No

Heated: No  
Finished: No  
Enclosed: Yes  
Contiguous: Yes  
Permitted: Yes  
Wet space: No  
Addition: No  
Conversion: No

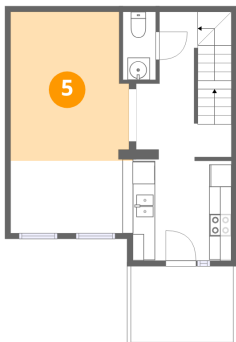
### 4 Floor 1 - Laundry



Max Dimensions: 5'6" x 8'11"  
Calculated Area: 47 sq. ft  
Included: Yes

Heated: Yes  
Finished: Yes  
Enclosed: Yes  
Contiguous: Yes  
Permitted: Yes  
Wet space: No  
Addition: No  
Conversion: No

### 5 Floor 2 - Living Room

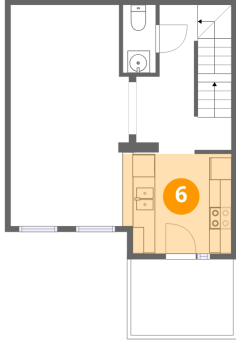


Max Dimensions: 10'7" x 13'4"  
Calculated Area: 135 sq. ft  
Included: Yes

Heated: Yes  
Finished: Yes  
Enclosed: Yes  
Contiguous: Yes  
Permitted: Yes  
Wet space: No  
Addition: No  
Conversion: No

150 Langlois Way, Stonebridge, Saskatoon, Saskatchewan,  
Canada, S7T 0K8, 553

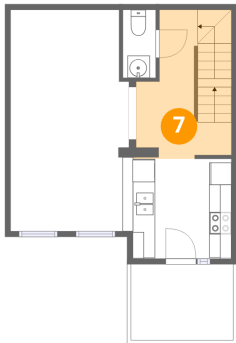
## 6 Floor 2 - Kitchen



Max Dimensions: 9'9" x 8'11"  
Calculated Area: 85 sq. ft  
Included: Yes

Heated: Yes  
Finished: Yes  
Enclosed: Yes  
Contiguous: Yes  
Permitted: Yes  
Wet space: No  
Addition: No  
Conversion: No

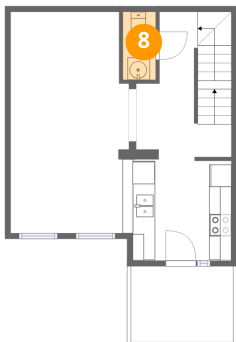
## 7 Floor 2 - Hall



Max Dimensions: 8'6" x 13'4"  
Calculated Area: 98 sq. ft  
Included: Yes

Heated: Yes  
Finished: Yes  
Enclosed: Yes  
Contiguous: Yes  
Permitted: Yes  
Wet space: No  
Addition: No  
Conversion: No

## 8 Floor 2 - WC

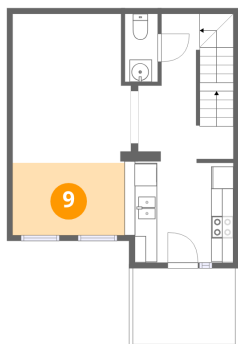


Max Dimensions: 2'11" x 6'1"  
Calculated Area: 18 sq. ft  
Included: Yes

Heated: Yes  
Finished: Yes  
Enclosed: Yes  
Contiguous: Yes  
Permitted: Yes  
Wet space: Yes  
Addition: No  
Conversion: No

150 Langlois Way, Stonebridge, Saskatoon, Saskatchewan,  
Canada, S7T 0K8, 553

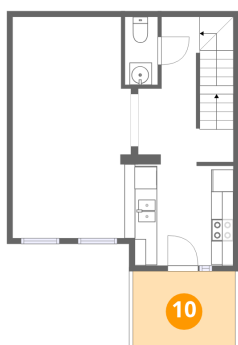
## 9 Floor 2 - Dining Area



Max Dimensions: 10'1" x 6'6"  
Calculated Area: 65 sq. ft  
Included: Yes

Heated: Yes  
Finished: Yes  
Enclosed: Yes  
Contiguous: Yes  
Permitted: Yes  
Wet space: No  
Addition: No  
Conversion: No

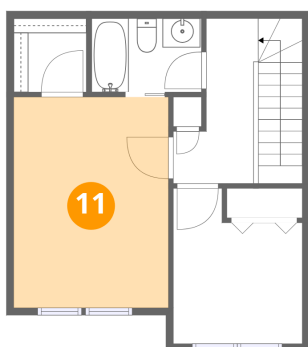
## 10 Floor 2 - Balcony



Max Dimensions: 9'2" x 6'10"  
Calculated Area: 63 sq. ft  
Included: No

Heated: No  
Finished: No  
Enclosed: No  
Contiguous: Yes  
Permitted: Yes  
Wet space: No  
Addition: No  
Conversion: No

## 11 Floor 3 - Primary Bedroom

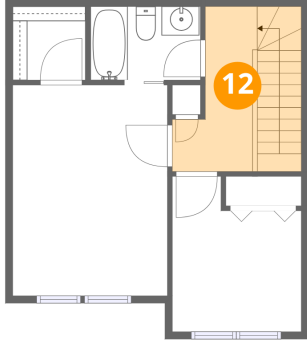


Max Dimensions: 10'7" x 14'6"  
Calculated Area: 154 sq. ft  
Included: Yes

Heated: Yes  
Finished: Yes  
Enclosed: Yes  
Contiguous: Yes  
Permitted: Yes  
Wet space: No  
Addition: No  
Conversion: No

150 Langlois Way, Stonebridge, Saskatoon, Saskatchewan,  
Canada, S7T 0K8, 553

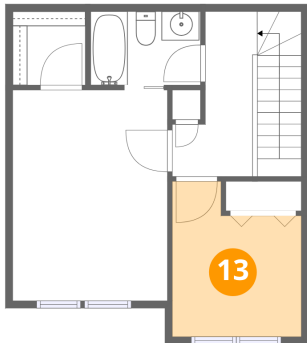
**12** Floor 3 - Hall



Max Dimensions: 5'6" x 11'4"  
Calculated Area: 83 sq. ft  
Included: Yes

Heated: Yes  
Finished: Yes  
Enclosed: Yes  
Contiguous: Yes  
Permitted: Yes  
Wet space: No  
Addition: No  
Conversion: No

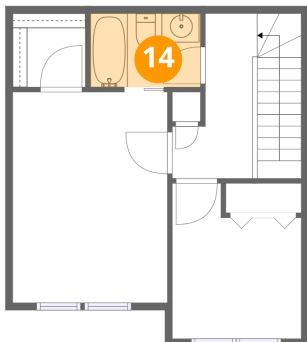
**13** Floor 3 - Bedroom



Max Dimensions: 8'10" x 10'8"  
Calculated Area: 81 sq. ft  
Included: Yes

Heated: Yes  
Finished: Yes  
Enclosed: Yes  
Contiguous: Yes  
Permitted: Yes  
Wet space: No  
Addition: No  
Conversion: No

**14** Floor 3 - Bath



Max Dimensions: 7'7" x 5'1"  
Calculated Area: 38 sq. ft  
Included: Yes

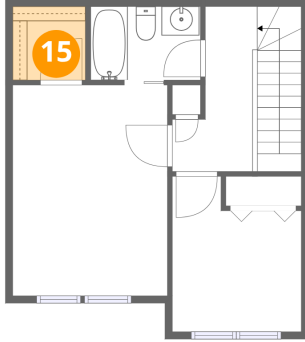
Heated: Yes  
Finished: Yes  
Enclosed: Yes  
Contiguous: Yes  
Permitted: Yes  
Wet space: Yes  
Addition: No  
Conversion: No

Home report

150 Langlois Way, Stonebridge, Saskatoon, Saskatchewan,  
Canada, S7T 0K8, 553

**15** Floor 3 - W.I.C.

---



Max Dimensions: 5'0" x 5'1"  
Calculated Area: 25 sq. ft  
Included: Yes

Heated: Yes  
Finished: Yes  
Enclosed: Yes  
Contiguous: Yes  
Permitted: Yes  
Wet space: No  
Addition: No  
Conversion: No