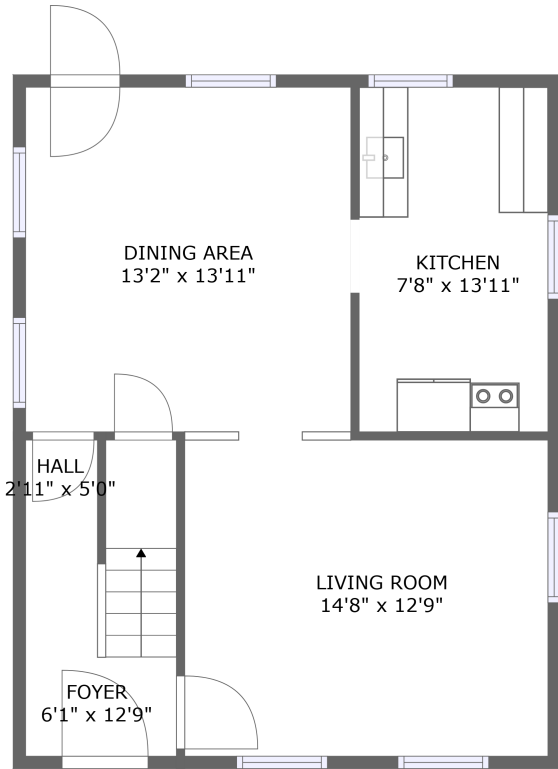
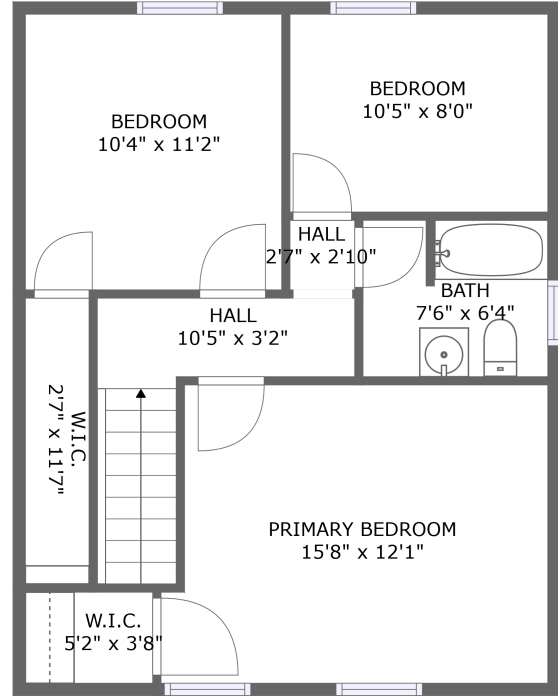


# 8 Beech Street, Caryville, Bellingham, Norfolk County, Massachusetts, United States, 02019



FLOOR 1



FLOOR 2

## Property Summary

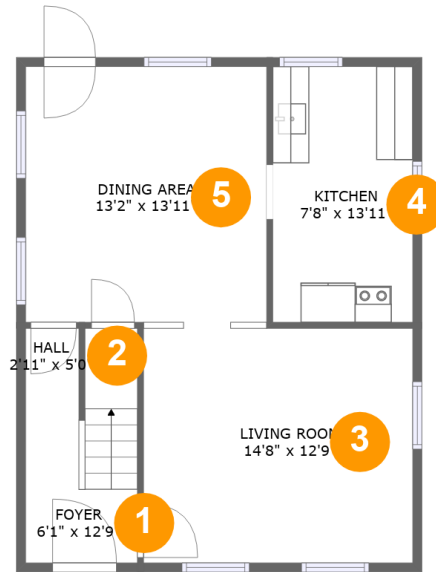
**0** garages    **3** bedrooms    **1** bathrooms    **0** half baths

**2** floors

**1,131** Gross Living Area sqft

**1,242** total sqft

# 8 Beech Street, Caryville, Bellingham, Norfolk County, Massachusetts, United States, 02019



## Room Dimensions

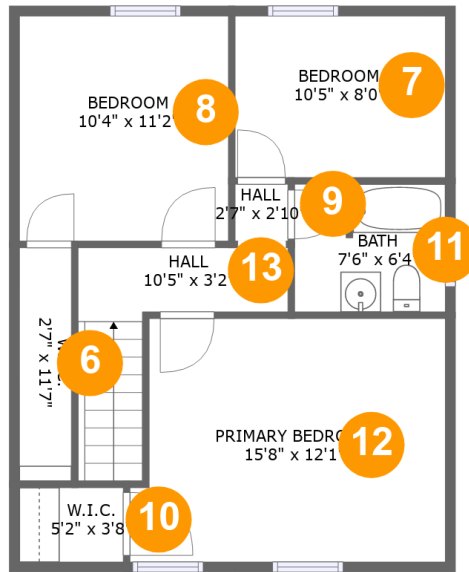
Floor 1

Total sqft: 621

Living area: 621

#	Room name	Dimensions	Area (sqft)	Counted as Living Area
1	Foyer	6'1" x 12'9"	62 sq. ft	Yes
2	Hall	2'11" x 5'0"	15 sq. ft	Yes
3	Living Room	14'8" x 12'9"	190 sq. ft	Yes
4	Kitchen	7'8" x 13'11"	107 sq. ft	Yes
5	Dining Area	13'2" x 13'11"	183 sq. ft	Yes

# 8 Beech Street, Caryville, Bellingham, Norfolk County, Massachusetts, United States, 02019



## Room Dimensions

Floor 2

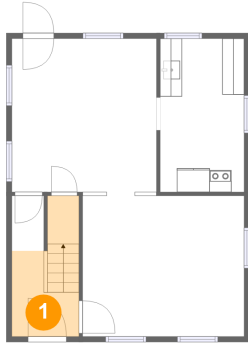
Total sqft: 621

Living area: 510

#	Room name	Dimensions	Area (sqft)	Counted as Living Area
6	W.i.c.	2'7" x 11'7"	30 sq. ft	No
7	Bedroom	10'5" x 8'0"	83 sq. ft	Yes
8	Bedroom	10'4" x 11'2"	116 sq. ft	Yes
9	Hall	2'7" x 2'10"	7 sq. ft	Yes
10	W.i.c.	5'2" x 3'8"	19 sq. ft	No
11	Bath	7'6" x 6'4"	46 sq. ft	No
12	Primary Bedroom	15'8" x 12'1"	181 sq. ft	Yes
13	Hall	10'5" x 3'2"	60 sq. ft	Yes

# 8 Beech Street, Caryville, Bellingham, Norfolk County, Massachusetts, United States, 02019

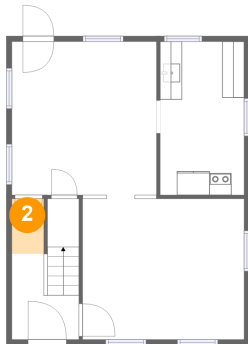
## 1 Floor 1 - Foyer



Dimensions: 6'1" x 12'9"  
Area: 62 sq. ft  
Counted as Living Area:  
Yes

Heated: Yes  
Finished: Yes  
Enclosed: Yes  
Contiguous:  
Yes  
Permitted: Yes  
Wet Space: No  
Addition: No  
Conversion: No

## 2 Floor 1 - Hall

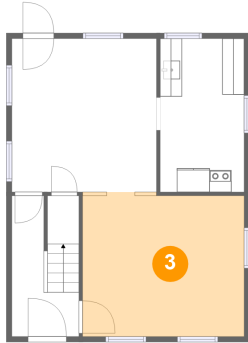


Dimensions: 2'11" x 5'0"  
Area: 15 sq. ft  
Counted as Living Area:  
Yes

Heated: Yes  
Finished: Yes  
Enclosed: Yes  
Contiguous:  
Yes  
Permitted: Yes  
Wet Space: No  
Addition: No  
Conversion: No

# 8 Beech Street, Caryville, Bellingham, Norfolk County, Massachusetts, United States, 02019

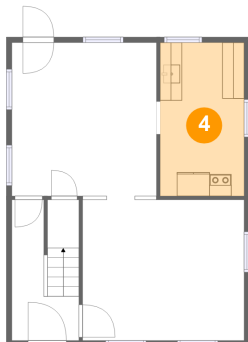
## 3 Floor 1 - Living Room



Dimensions: 14'8" x 12'9"  
Area: 190 sq. ft  
Counted as Living Area:  
Yes

Heated: Yes  
Finished: Yes  
Enclosed: Yes  
Contiguous:  
Yes  
Permitted: Yes  
Wet Space: No  
Addition: No  
Conversion: No

## 4 Floor 1 - Kitchen



Dimensions: 7'8" x 13'11"  
Area: 107 sq. ft  
Counted as Living Area:  
Yes

Heated: Yes  
Finished: Yes  
Enclosed: Yes  
Contiguous:  
Yes  
Permitted: Yes  
Wet Space: No  
Addition: No  
Conversion: No

## 5 Floor 1 - Dining Area

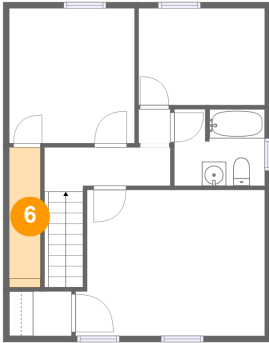


Dimensions: 13'2" x 13'11"  
Area: 183 sq. ft  
Counted as Living Area:  
Yes

Heated: Yes  
Finished: Yes  
Enclosed: Yes  
Contiguous:  
Yes  
Permitted: Yes  
Wet Space: No  
Addition: No  
Conversion: No

# 8 Beech Street, Caryville, Bellingham, Norfolk County, Massachusetts, United States, 02019

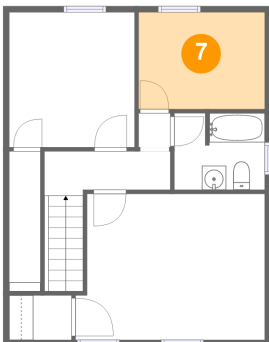
## 6 Floor 2 - W.i.c.



Dimensions: 2'7" x 11'7"  
Area: 30 sq. ft  
Counted as Living Area: No

Heated: Yes  
Finished: Yes  
Enclosed: Yes  
Contiguous: Yes  
Permitted: Yes  
Wet Space: No  
Addition: No  
Conversion: No

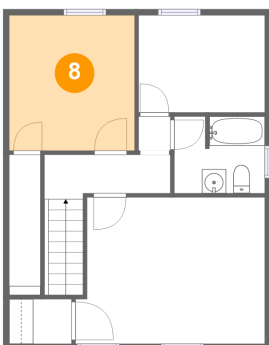
## 7 Floor 2 - Bedroom



Dimensions: 10'5" x 8'0"  
Area: 83 sq. ft  
Counted as Living Area: Yes

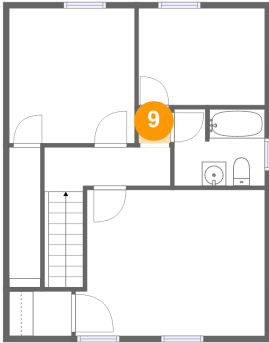
Heated: Yes  
Finished: Yes  
Enclosed: Yes  
Contiguous: Yes  
Permitted: Yes  
Wet Space: No  
Addition: No  
Conversion: No

## 8 Floor 2 - Bedroom



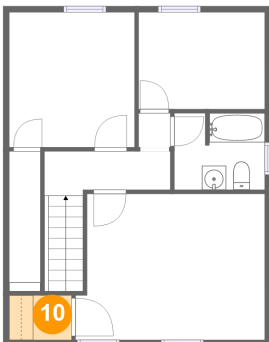
Dimensions: 10'4" x 11'2"  
Area: 116 sq. ft  
Counted as Living Area: Yes

Heated: Yes  
Finished: Yes  
Enclosed: Yes  
Contiguous: Yes  
Permitted: Yes  
Wet Space: No  
Addition: No  
Conversion: No

**8 Beech Street, Caryville, Bellingham, Norfolk  
County, Massachusetts, United States, 02019****9 Floor 2 - Hall**

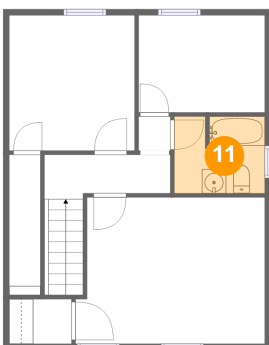
Dimensions: 2'7" x 2'10"  
Area: 7 sq. ft  
Counted as Living Area:  
Yes

Heated: Yes  
Finished: Yes  
Enclosed: Yes  
Contiguous:  
Yes  
Permitted: Yes  
Wet Space: No  
Addition: No  
Conversion: No

**10 Floor 2 - W.i.c.**

Dimensions: 5'2" x 3'8"  
Area: 19 sq. ft  
Counted as Living Area: No

Heated: Yes  
Finished: Yes  
Enclosed: Yes  
Contiguous: Yes  
Permitted: Yes  
Wet Space: No  
Addition: No  
Conversion: No

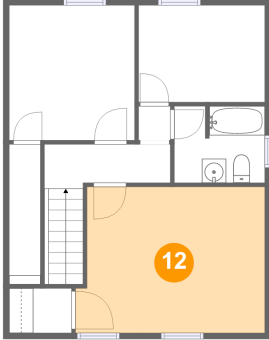
**11 Floor 2 - Bath**

Dimensions: 7'6" x 6'4"  
Area: 46 sq. ft  
Counted as Living Area: No

Heated: Yes  
Finished: Yes  
Enclosed: Yes  
Contiguous: Yes  
Permitted: Yes  
Wet Space: Yes  
Addition: No  
Conversion: No

# 8 Beech Street, Caryville, Bellingham, Norfolk County, Massachusetts, United States, 02019

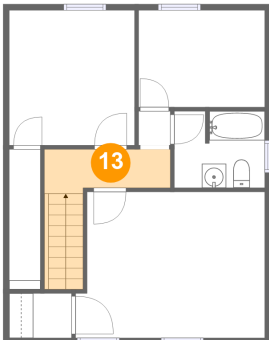
## 12 Floor 2 - Primary Bedroom



Dimensions: 15'8" x 12'1"  
Area: 181 sq. ft  
Counted as Living Area:  
Yes

Heated: Yes  
Finished: Yes  
Enclosed: Yes  
Contiguous:  
Yes  
Permitted: Yes  
Wet Space: No  
Addition: No  
Conversion: No

## 13 Floor 2 - Hall



Dimensions: 10'5" x 3'2"  
Area: 60 sq. ft  
Counted as Living Area:  
Yes

Heated: Yes  
Finished: Yes  
Enclosed: Yes  
Contiguous:  
Yes  
Permitted: Yes  
Wet Space: No  
Addition: No  
Conversion: No