

Home report

500 Kinsman Road, Greene Township, Jamestown, Mercer
County, Pennsylvania, United States, 16134



Total Area: 2377 sq. ft

Below Ground: 0 sq. ft, Floor 2: 1833 sq. ft, Floor 3: 0 sq. ft, Floor 4: 0 sq. ft, Floor 5: 0 sq. ft, Floor 6: 544 sq. ft

Excluded: Bedroom 99 sq. ft, Basement 729 sq. ft, Room 390 sq. ft, Utility 32 sq. ft, Garage 1325 sq. ft, Outdoor Porch 270 sq. ft, Outdoor Deck 99 sq. ft, Outdoor Patio 39 sq. ft, Fireplace 14 sq. ft, Stable 347 sq. ft, Outdoor Patio Covered 573 sq. ft, Storage Shed 188 sq. ft, Low Ceiling 24 sq. ft, Walls: 383 sq. ft

Property summary


Home report

500 Kinsman Road, Greene Township, Jamestown, Mercer
County, Pennsylvania, United States, 16134

**6**
Floors

**5**
Bedrooms

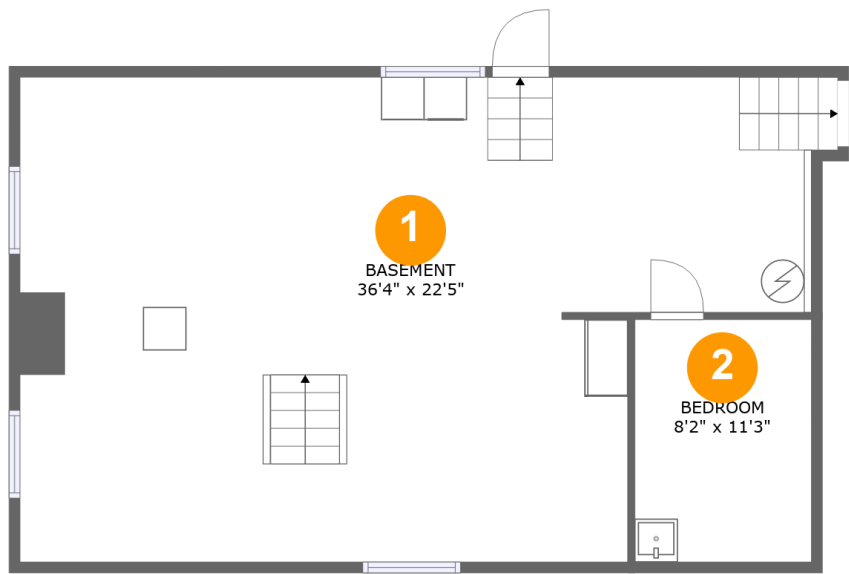
**2**
Bathrooms

**1**
Half baths

**2**
Garages

Home report

500 Kinsman Road, Greene Township, Jamestown, Mercer
County, Pennsylvania, United States, 16134



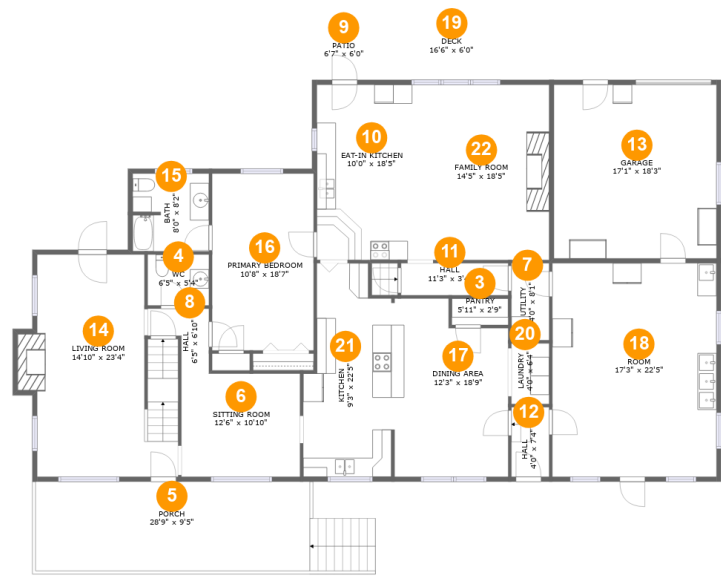
Room dimensions

Floor 1 Below ground Total:0sqft Excluded: 828sqft

#		Max Dimensions	sqft	Included
1	Basement	36'4" x 22'5"	727 sq. ft	No
2	Bedroom	8'2" x 11'3"	92 sq. ft	No

Home report

500 Kinsman Road, Greene Township, Jamestown, Mercer
County, Pennsylvania, United States, 16134



Room dimensions

Floor 2 Total:1833sqft Excluded: 1156sqft

#		Max Dimensions	sqft	Included
3	Pantry	5'11" x 2'9"	16 sq. ft	Yes
4	WC	6'5" x 5'4"	34 sq. ft	Yes
5	Porch	28'9" x 9'5"	270 sq. ft	No
6	Sitting Room	12'6" x 10'10"	135 sq. ft	Yes
7	Utility	4'0" x 8'1"	32 sq. ft	No
8	Hall	6'5" x 6'10"	30 sq. ft	Yes
9	Patio	6'7" x 6'0"	39 sq. ft	No
10	Eat-in Kitchen	10'0" x 18'5"	184 sq. ft	Yes
11	Hall	11'3" x 3'4"	38 sq. ft	Yes
12	Hall	4'0" x 7'4"	29 sq. ft	Yes
13	Garage	17'1" x 18'3"	312 sq. ft	No

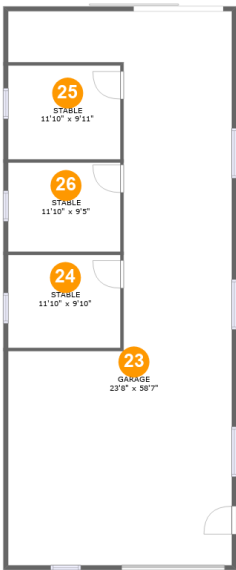
Home report

500 Kinsman Road, Greene Township, Jamestown, Mercer County, Pennsylvania, United States, 16134

#		Max Dimensions	sqft	Included
14	Living Room	14'10" x 23'4"	325 sq. ft	Yes
15	Bath	8'0" x 8'2"	65 sq. ft	Yes
16	Primary Bedroom	10'8" x 18'7"	198 sq. ft	Yes
17	Dining Area	12'3" x 18'9"	209 sq. ft	Yes
18	Room	17'3" x 22'5"	387 sq. ft	No
19	Deck	16'6" x 6'0"	99 sq. ft	No
20	Laundry	4'0" x 6'4"	25 sq. ft	Yes
21	Kitchen	9'3" x 22'5"	182 sq. ft	Yes
22	Family Room	14'5" x 18'5"	265 sq. ft	Yes

Home report

500 Kinsman Road, Greene Township, Jamestown, Mercer
County, Pennsylvania, United States, 16134



Room dimensions

Floor 3 Total:0sqft Excluded: 1360sqft

#		Max Dimensions	sqft	Included
23	Garage	23'8" x 58'7"	1013 sq. ft	No
24	Stable	11'10" x 9'10"	117 sq. ft	No
25	Stable	11'10" x 9'11"	118 sq. ft	No
26	Stable	11'10" x 9'5"	112 sq. ft	No

Home report

500 Kinsman Road, Greene Township, Jamestown, Mercer
County, Pennsylvania, United States, 16134



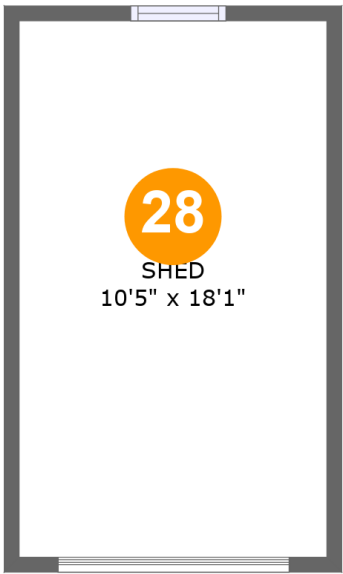
Room dimensions

Floor 4 Total:0sqft Excluded: 573sqft

#		Max Dimensions	sqft	Included
27	Covered Patio	16'7" x 34'6"	573 sq. ft	No

Home report

500 Kinsman Road, Greene Township, Jamestown, Mercer
County, Pennsylvania, United States, 16134



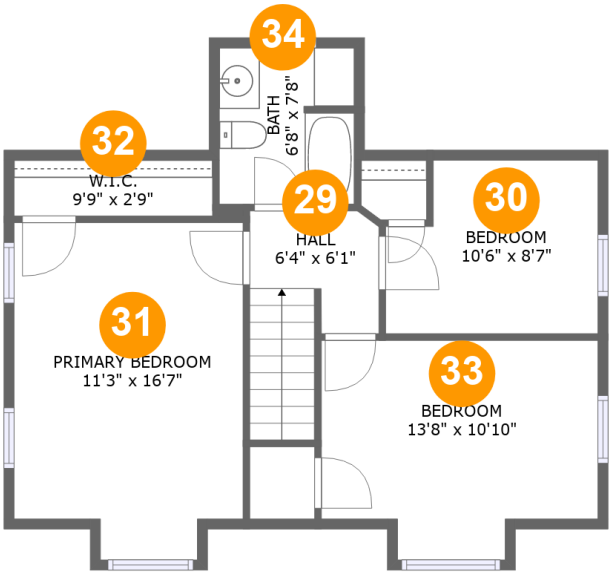
Room dimensions

Floor 5 Total:0sqft Excluded: 188sqft

#		Max Dimensions	sqft	Included
28	Shed	10'5" x 18'1"	188 sq. ft	No

Home report

500 Kinsman Road, Greene Township, Jamestown, Mercer
County, Pennsylvania, United States, 16134

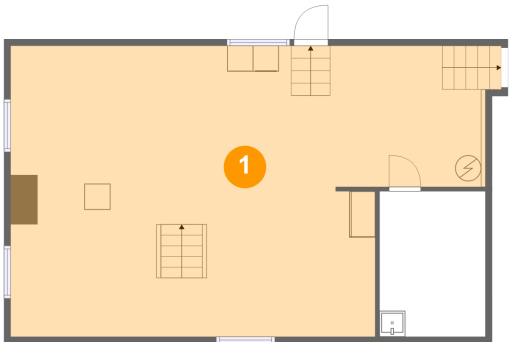


Room dimensions

Floor 6 Total:544sqft Excluded: 24sqft

#		Max Dimensions	sqft	Included
29	Hall	6'4" x 6'1"	54 sq. ft	Yes
30	Bedroom	10'6" x 8'7"	77 sq. ft	Yes
31	Primary Bedroom	11'3" x 16'7"	170 sq. ft	Yes
32	W.I.C.	9'9" x 2'9"	21 sq. ft	Yes
33	Bedroom	13'8" x 10'10"	125 sq. ft	Yes
34	Bath	6'8" x 7'8"	50 sq. ft	Yes

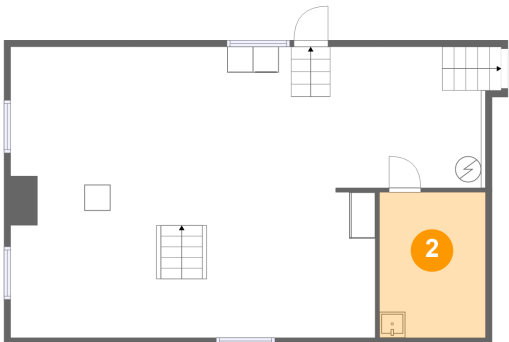
1 Floor 1 - Basement



Max Dimensions: 36'4" x 22'5"
Calculated Area: 727 sq. ft
Included: No

Heated: Yes
Finished: No
Enclosed: Yes
Contiguous: Yes
Permitted: Yes
Wet space: No
Addition: No
Conversion: No

2 Floor 1 - Bedroom



Max Dimensions: 8'2" x 11'3"
Calculated Area: 92 sq. ft
Included: No

Heated: Yes
Finished: No
Enclosed: Yes
Contiguous: Yes
Permitted: Yes
Wet space: No
Addition: No
Conversion: No

3 Floor 2 - Pantry



Max Dimensions: 5'11" x 2'9"
Calculated Area: 16 sq. ft
Included: Yes

Heated: Yes
Finished: Yes
Enclosed: Yes
Contiguous: Yes
Permitted: Yes
Wet space: No
Addition: No
Conversion: No

4 Floor 2 - WC



Max Dimensions: 6'5" x 5'4"
Calculated Area: 34 sq. ft
Included: Yes

Heated: Yes
Finished: Yes
Enclosed: Yes
Contiguous: Yes
Permitted: Yes
Wet space: No
Addition: No
Conversion: No

5 Floor 2 - Porch



Max Dimensions: 28'9" x 9'5"
Calculated Area: 270 sq. ft
Included: No

Heated: No
Finished: Yes
Enclosed: No
Contiguous: Yes
Permitted: Yes
Wet space: No
Addition: No
Conversion: No

6 Floor 2 - Sitting Room



Max Dimensions: 12'6" x 10'10"
Calculated Area: 135 sq. ft
Included: Yes

Heated: Yes
Finished: Yes
Enclosed: Yes
Contiguous: Yes
Permitted: Yes
Wet space: No
Addition: No
Conversion: No

7 Floor 2 - Utility



Max Dimensions: 4'0" x 8'1"
Calculated Area: 32 sq. ft
Included: No

Heated: Yes
Finished: No
Enclosed: Yes
Contiguous: Yes
Permitted: Yes
Wet space: No
Addition: No
Conversion: No

8 Floor 2 - Hall

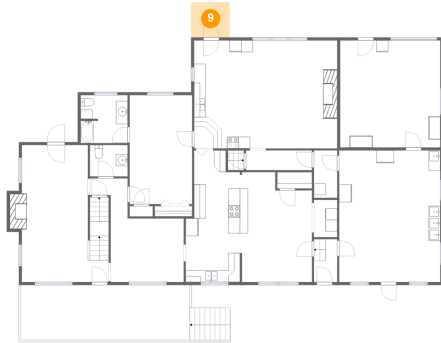


Max Dimensions: 6'5" x 6'10"
Calculated Area: 30 sq. ft
Included: Yes

Heated: Yes
Finished: Yes
Enclosed: Yes
Contiguous: Yes
Permitted: Yes
Wet space: No
Addition: No
Conversion: No

500 Kinsman Road, Greene Township, Jamestown, Mercer
County, Pennsylvania, United States, 16134

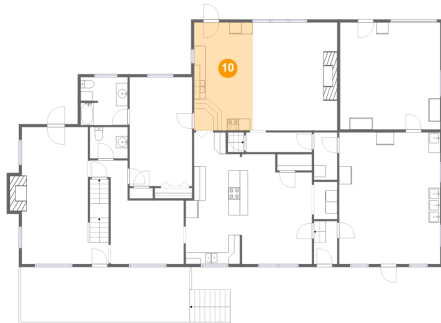
9 Floor 2 - Patio



Max Dimensions: 6'7" x 6'0"
Calculated Area: 39 sq. ft
Included: No

Heated: No
Finished: Yes
Enclosed: No
Contiguous: Yes
Permitted: Yes
Wet space: No
Addition: No
Conversion: No

10 Floor 2 - Eat-in Kitchen



Max Dimensions: 10'0" x
18'5"
Calculated Area: 184 sq. ft
Included: Yes

Heated: Yes
Finished: Yes
Enclosed: Yes
Contiguous:
Yes
Permitted: Yes
Wet space: No
Addition: No
Conversion: No

11 Floor 2 - Hall



Max Dimensions: 11'3" x
3'4"
Calculated Area: 38 sq. ft
Included: Yes

Heated: Yes
Finished: Yes
Enclosed: Yes
Contiguous:
Yes
Permitted: Yes
Wet space: No
Addition: No
Conversion: No

12 Floor 2 - Hall



Max Dimensions: 4'0" x 7'4"
Calculated Area: 29 sq. ft
Included: Yes

Heated: Yes
Finished: Yes
Enclosed: Yes
Contiguous: Yes
Permitted: Yes
Wet space: No
Addition: No
Conversion: No

13 Floor 2 - Garage



Max Dimensions: 17'1" x 18'3"
Calculated Area: 312 sq. ft
Included: No

Heated: No
Finished: No
Enclosed: Yes
Contiguous: Yes
Permitted: Yes
Wet space: No
Addition: No
Conversion: No

14 Floor 2 - Living Room



Max Dimensions: 14'10" x 23'4"
Calculated Area: 325 sq. ft
Included: Yes

Heated: Yes
Finished: Yes
Enclosed: Yes
Contiguous: Yes
Permitted: Yes
Wet space: No
Addition: No
Conversion: No

500 Kinsman Road, Greene Township, Jamestown, Mercer
County, Pennsylvania, United States, 16134

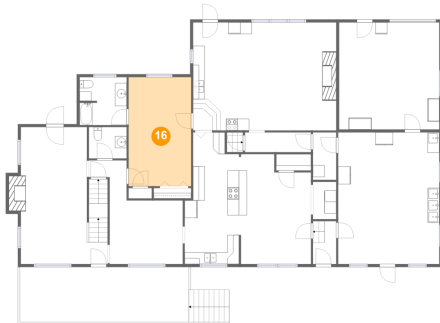
15 Floor 2 - Bath



Max Dimensions: 8'0" x 8'2"
Calculated Area: 65 sq. ft
Included: Yes

Heated: Yes
Finished: Yes
Enclosed: Yes
Contiguous: Yes
Permitted: Yes
Wet space: Yes
Addition: No
Conversion: No

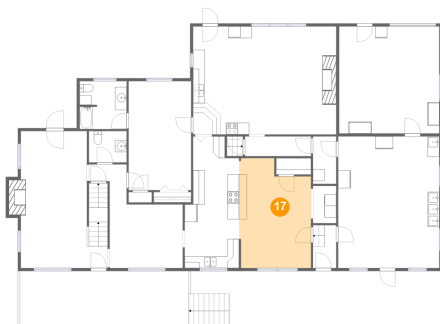
16 Floor 2 - Primary Bedroom



Max Dimensions: 10'8" x 18'7"
Calculated Area: 198 sq. ft
Included: Yes

Heated: Yes
Finished: Yes
Enclosed: Yes
Contiguous: Yes
Permitted: Yes
Wet space: No
Addition: No
Conversion: No

17 Floor 2 - Dining Area



Max Dimensions: 12'3" x 18'9"
Calculated Area: 209 sq. ft
Included: Yes

Heated: Yes
Finished: Yes
Enclosed: Yes
Contiguous: Yes
Permitted: Yes
Wet space: No
Addition: No
Conversion: No

500 Kinsman Road, Greene Township, Jamestown, Mercer
County, Pennsylvania, United States, 16134

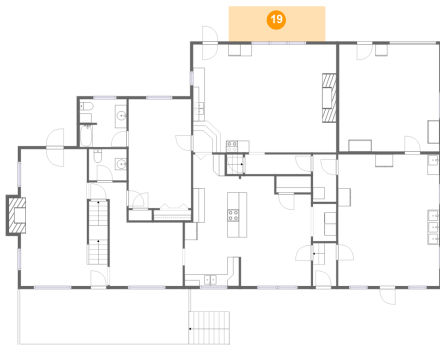
18 Floor 2 - Room



Max Dimensions: 17'3" x 22'5"
Calculated Area: 387 sq. ft
Included: No

Heated: Yes
Finished: No
Enclosed: Yes
Contiguous: Yes
Permitted: Yes
Wet space: No
Addition: No
Conversion: No

19 Floor 2 - Deck



Max Dimensions: 16'6" x 6'0"
Calculated Area: 99 sq. ft
Included: No

Heated: No
Finished: Yes
Enclosed: No
Contiguous: Yes
Permitted: Yes
Wet space: No
Addition: No
Conversion: No

20 Floor 2 - Laundry



Max Dimensions: 4'0" x 6'4"
Calculated Area: 25 sq. ft
Included: Yes

Heated: Yes
Finished: Yes
Enclosed: Yes
Contiguous: Yes
Permitted: Yes
Wet space: No
Addition: No
Conversion: No

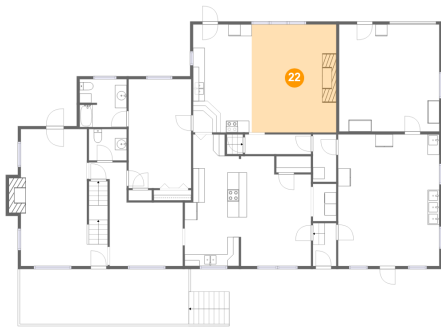
21 Floor 2 - Kitchen



Max Dimensions: 9'3" x 22'5"
Calculated Area: 182 sq. ft
Included: Yes

Heated: Yes
Finished: Yes
Enclosed: Yes
Contiguous: Yes
Permitted: Yes
Wet space: No
Addition: No
Conversion: No

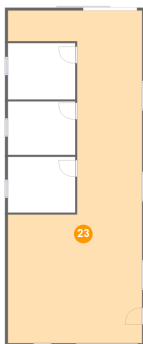
22 Floor 2 - Family Room



Max Dimensions: 14'5" x 18'5"
Calculated Area: 265 sq. ft
Included: Yes

Heated: Yes
Finished: Yes
Enclosed: Yes
Contiguous: Yes
Permitted: Yes
Wet space: No
Addition: No
Conversion: No

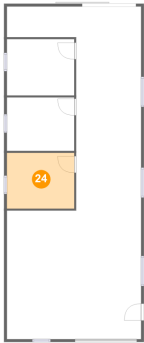
23 Floor 3 - Garage



Max Dimensions: 23'8" x 58'7"
Calculated Area: 1013 sq. ft
Included: No

Heated: No
Finished: No
Enclosed: Yes
Contiguous: Yes
Permitted: Yes
Wet space: No
Addition: No
Conversion: No

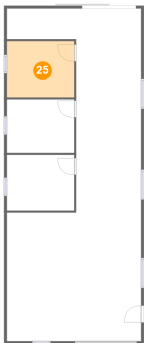
24 Floor 3 - Stable



Max Dimensions: 11'10" x 9'10"
Calculated Area: 117 sq. ft
Included: No

Heated: No
Finished: No
Enclosed: No
Contiguous: Yes
Permitted: Yes
Wet space: No
Addition: No
Conversion: No

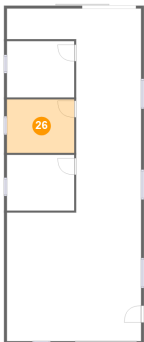
25 Floor 3 - Stable



Max Dimensions: 11'10" x 9'11"
Calculated Area: 118 sq. ft
Included: No

Heated: No
Finished: No
Enclosed: No
Contiguous: Yes
Permitted: Yes
Wet space: No
Addition: No
Conversion: No

26 Floor 3 - Stable



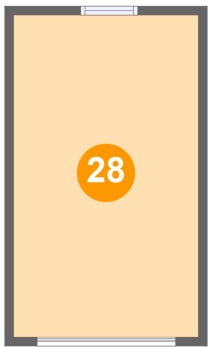
Max Dimensions: 11'10" x 9'5"
Calculated Area: 112 sq. ft
Included: No

Heated: No
Finished: No
Enclosed: No
Contiguous: Yes
Permitted: Yes
Wet space: No
Addition: No
Conversion: No

27 Floor 4 - Covered Patio

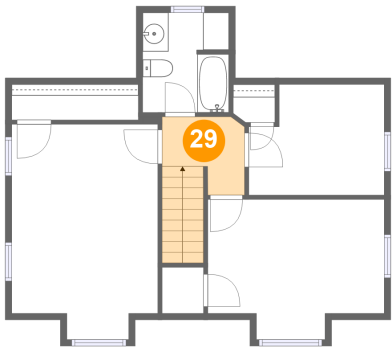
Max Dimensions: 16'7" x 34'6"	Heated: No
Calculated Area: 573 sq. ft	Finished: Yes
Included: No	Enclosed: No
	Contiguous: Yes
	Permitted: Yes
	Wet space: No
	Addition: No
	Conversion: No

28 Floor 5 - Shed



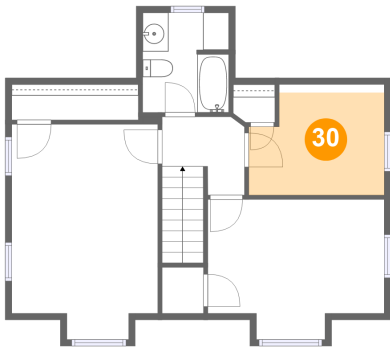
Max Dimensions: 10'5" x 18'1"	Heated: No
Calculated Area: 188 sq. ft	Finished: No
Included: No	Enclosed: No
	Contiguous: Yes
	Permitted: Yes
	Wet space: No
	Addition: No
	Conversion: No

29 Floor 6 - Hall



Max Dimensions: 6'4" x 6'1"	Heated: Yes
Calculated Area: 54 sq. ft	Finished: Yes
Included: Yes	Enclosed: Yes
	Contiguous: Yes
	Permitted: Yes
	Wet space: No
	Addition: No
	Conversion: No

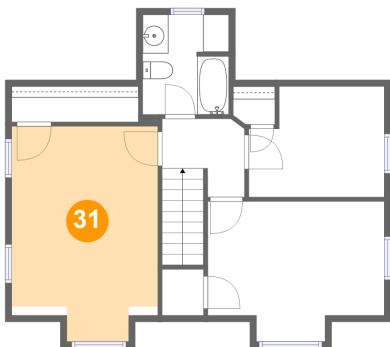
30 Floor 6 - Bedroom



Max Dimensions: 10'6" x 8'7"
Calculated Area: 77 sq. ft
Included: Yes

Heated: Yes
Finished: Yes
Enclosed: Yes
Contiguous: Yes
Permitted: Yes
Wet space: No
Addition: No
Conversion: No

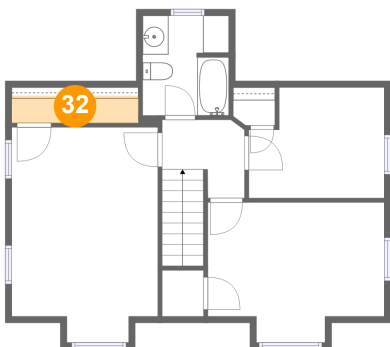
31 Floor 6 - Primary Bedroom



Max Dimensions: 11'3" x 16'7"
Calculated Area: 170 sq. ft
Included: Yes

Heated: Yes
Finished: Yes
Enclosed: Yes
Contiguous: Yes
Permitted: Yes
Wet space: No
Addition: No
Conversion: No

32 Floor 6 - W.I.C.

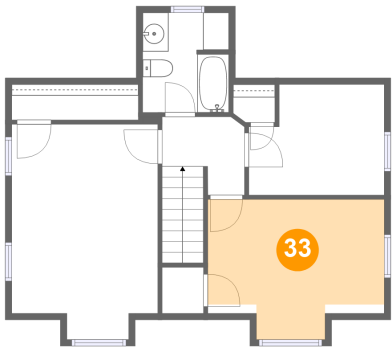


Max Dimensions: 9'9" x 2'9"
Calculated Area: 21 sq. ft
Included: Yes

Heated: Yes
Finished: Yes
Enclosed: Yes
Contiguous: Yes
Permitted: Yes
Wet space: No
Addition: No
Conversion: No

500 Kinsman Road, Greene Township, Jamestown, Mercer
County, Pennsylvania, United States, 16134

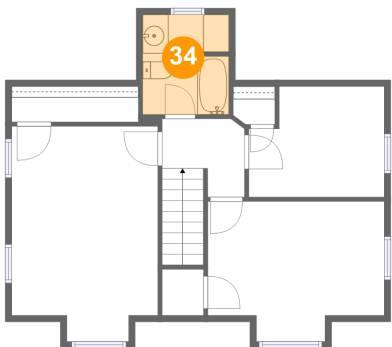
33 Floor 6 - Bedroom



Max Dimensions: 13'8" x 10'10"
Calculated Area: 125 sq. ft
Included: Yes

Heated: Yes
Finished: Yes
Enclosed: Yes
Contiguous: Yes
Permitted: Yes
Wet space: No
Addition: No
Conversion: No

34 Floor 6 - Bath



Max Dimensions: 6'8" x 7'8"
Calculated Area: 50 sq. ft
Included: Yes

Heated: Yes
Finished: Yes
Enclosed: Yes
Contiguous: Yes
Permitted: Yes
Wet space: Yes
Addition: No
Conversion: No