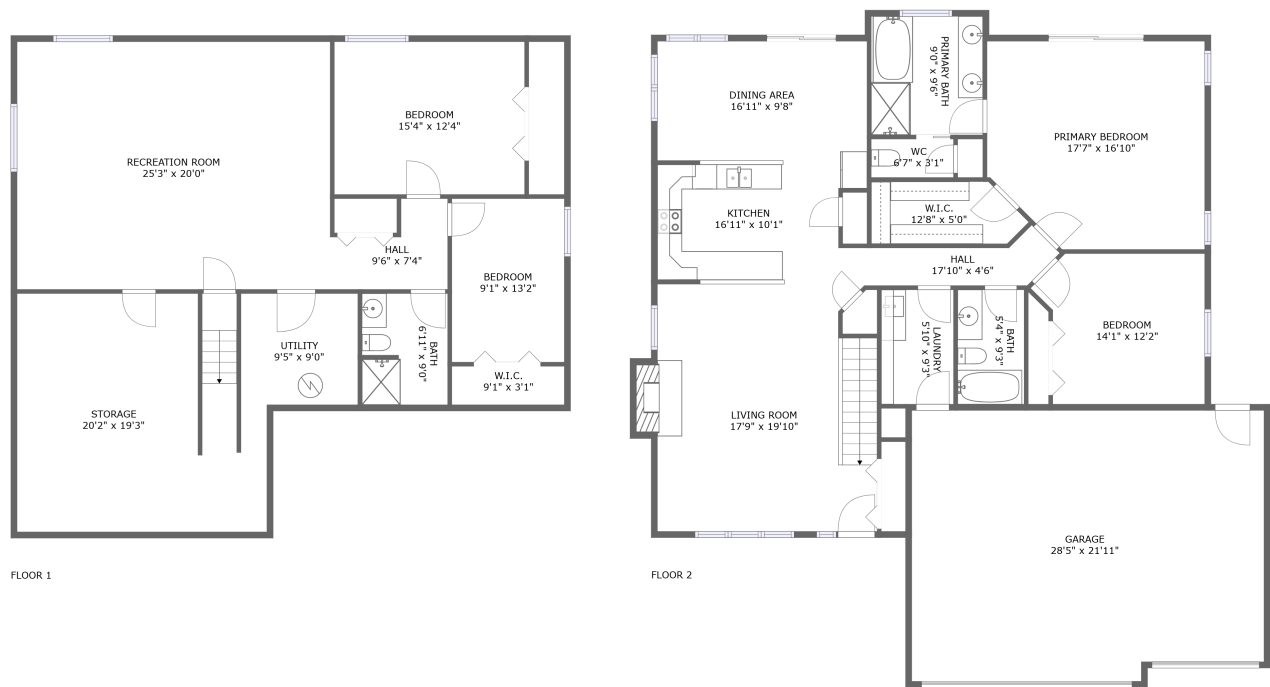




Home report


4928 Topaz Dr,Cheyenne,WY,US




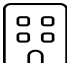
Property summary


**1** Garages


**4** Bedrooms

**3** Bathrooms

**0** Half baths

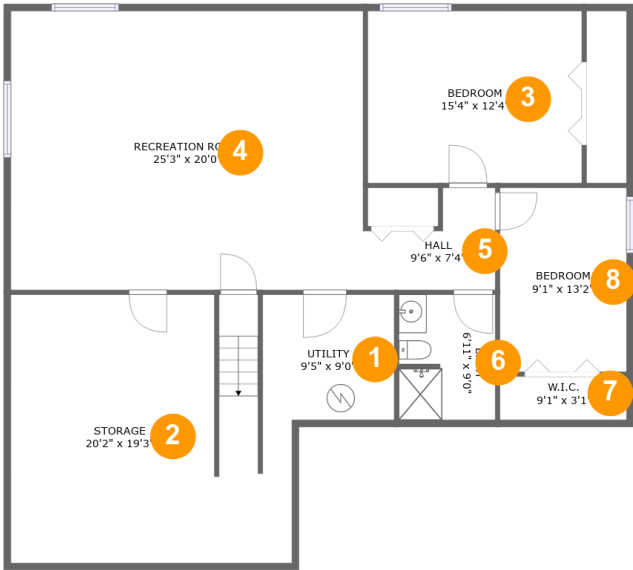
**2** Floors

**2,711** Gross living area sqft

**3,846** Total sqft

Home report

4928 Topaz Dr,Cheyenne,WY,US



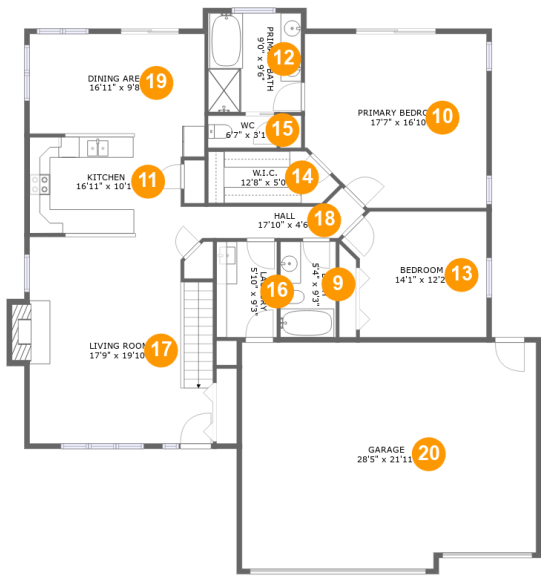
Room dimensions

Floor 1 Total sqft: 1588 Living area: 1105

| # | | Dimensions | sqft | Counted as living area |
|---|-----------------|---------------|------------|------------------------|
| 1 | Utility | 9'5" x 9'0" | 85 sq. ft | No |
| 2 | Storage | 20'2" x 19'3" | 361 sq. ft | No |
| 3 | Bedroom | 15'4" x 12'4" | 190 sq. ft | Yes |
| 4 | Recreation Room | 25'3" x 20'0" | 506 sq. ft | Yes |
| 5 | Hall | 9'6" x 7'4" | 52 sq. ft | Yes |
| 6 | Bath | 6'11" x 9'0" | 61 sq. ft | Yes |
| 7 | W.I.C. | 9'1" x 3'1" | 28 sq. ft | Yes |
| 8 | Bedroom | 9'1" x 13'2" | 120 sq. ft | Yes |

Home report

4928 Topaz Dr,Cheyenne,WY,US



Room dimensions

Floor 2 Total sqft: 2258 Living area: 1606

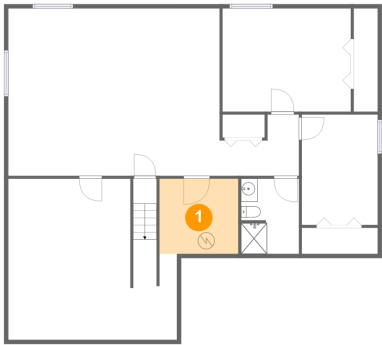
| # | | Dimensions | sqft | Counted as living area |
|----|-----------------|----------------|------------|------------------------|
| 9 | Bath | 5'4" x 9'3" | 50 sq. ft | Yes |
| 10 | Primary Bedroom | 17'7" x 16'10" | 277 sq. ft | Yes |
| 11 | Kitchen | 16'11" x 10'1" | 151 sq. ft | Yes |
| 12 | Primary Bath | 9'0" x 9'6" | 86 sq. ft | Yes |
| 13 | Bedroom | 14'1" x 12'2" | 152 sq. ft | Yes |
| 14 | W.I.C. | 12'8" x 5'0" | 57 sq. ft | Yes |
| 15 | WC | 6'7" x 3'1" | 21 sq. ft | Yes |
| 16 | Laundry | 5'10" x 9'3" | 54 sq. ft | Yes |
| 17 | Living Room | 17'9" x 19'10" | 351 sq. ft | Yes |
| 18 | Hall | 17'10" x 4'6" | 54 sq. ft | Yes |
| 19 | Dining Area | 16'11" x 9'8" | 163 sq. ft | Yes |

Home report

4928 Topaz Dr,Cheyenne,WY,US

| # | | Dimensions | sqft | Counted as living area |
|----|--------|----------------|------------|------------------------|
| 20 | Garage | 28'5" x 21'11" | 607 sq. ft | No |

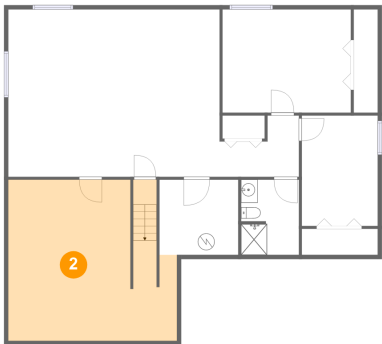
1 Floor 1 - Utility



Dimensions: 9'5" x 9'0"
Area: 85 sq. ft
Counted as living area: No

Heated: Yes
Finished: No
Enclosed: Yes
Contiguous: Yes
Permitted: Yes
Wet space: No
Addition: No
Conversion: No

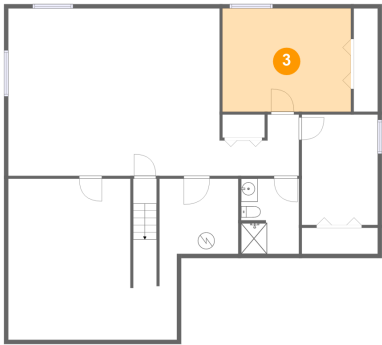
2 Floor 1 - Storage



Dimensions: 20'2" x 19'3"
Area: 361 sq. ft
Counted as living area: No

Heated: No
Finished: No
Enclosed: No
Contiguous: Yes
Permitted: Yes
Wet space: No
Addition: No
Conversion: No

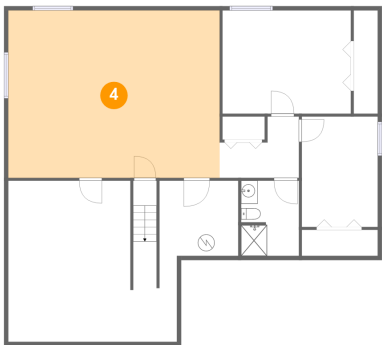
3 Floor 1 - Bedroom



Dimensions: 15'4" x 12'4"
Area: 190 sq. ft
Counted as living area: Yes

Heated: Yes
Finished: Yes
Enclosed: Yes
Contiguous: Yes
Permitted: Yes
Wet space: No
Addition: No
Conversion: No

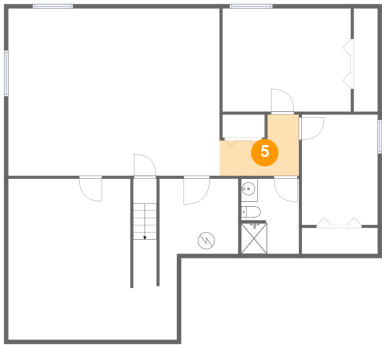
4 Floor 1 - Recreation Room



Dimensions: 25'3" x 20'0"
Area: 506 sq. ft
Counted as living area: Yes

Heated: Yes
Finished: Yes
Enclosed: Yes
Contiguous: Yes
Permitted: Yes
Wet space: No
Addition: No
Conversion: No

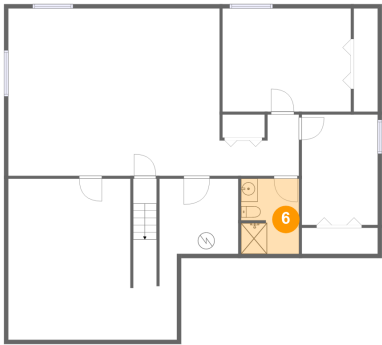
5 Floor 1 - Hall



Dimensions: 9'6" x 7'4"
Area: 52 sq. ft
Counted as living area: Yes

Heated: Yes
Finished: Yes
Enclosed: Yes
Contiguous: Yes
Permitted: Yes
Wet space: No
Addition: No
Conversion: No

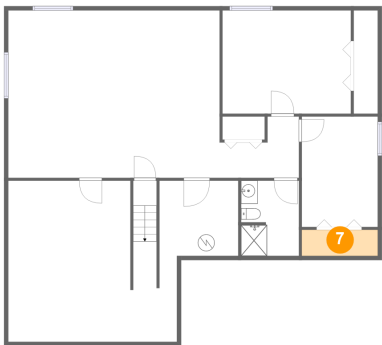
6 Floor 1 - Bath



Dimensions: 6'11" x 9'0"
Area: 61 sq. ft
Counted as living area: Yes

Heated: Yes
Finished: Yes
Enclosed: Yes
Contiguous: Yes
Permitted: Yes
Wet space: Yes
Addition: No
Conversion: No

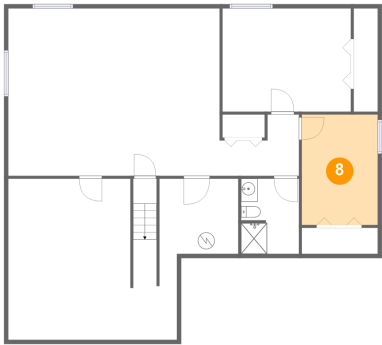
7 Floor 1 - W.I.C.



Dimensions: 9'1" x 3'1"
Area: 28 sq. ft
Counted as living area: Yes

Heated: Yes
Finished: Yes
Enclosed: Yes
Contiguous: Yes
Permitted: Yes
Wet space: No
Addition: No
Conversion: No

8 Floor 1 - Bedroom



Dimensions: 9'1" x 13'2"
Area: 120 sq. ft
Counted as living area: Yes

Heated: Yes
Finished: Yes
Enclosed: Yes
Contiguous: Yes
Permitted: Yes
Wet space: No
Addition: No
Conversion: No

9 Floor 2 - Bath



Dimensions: 5'4" x 9'3"
Area: 50 sq. ft
Counted as living area: Yes

Heated: Yes
Finished: Yes
Enclosed: Yes
Contiguous: Yes
Permitted: Yes
Wet space: Yes
Addition: No
Conversion: No

10 Floor 2 - Primary Bedroom



Dimensions: 17'7" x 16'10"
Area: 277 sq. ft
Counted as living area: Yes

Heated: Yes
Finished: Yes
Enclosed: Yes
Contiguous: Yes
Permitted: Yes
Wet space: No
Addition: No
Conversion: No

11 Floor 2 - Kitchen



Dimensions: 16'11" x 10'1"
Area: 151 sq. ft
Counted as living area: Yes

Heated: Yes
Finished: Yes
Enclosed: Yes
Contiguous: Yes
Permitted: Yes
Wet space: No
Addition: No
Conversion: No

12 Floor 2 - Primary Bath



Dimensions: 9'0" x 9'6"
Area: 86 sq. ft
Counted as living area: Yes

Heated: Yes
Finished: Yes
Enclosed: Yes
Contiguous: Yes
Permitted: Yes
Wet space: Yes
Addition: No
Conversion: No

13 Floor 2 - Bedroom



Dimensions: 14'1" x 12'2"
Area: 152 sq. ft
Counted as living area: Yes

Heated: Yes
Finished: Yes
Enclosed: Yes
Contiguous: Yes
Permitted: Yes
Wet space: No
Addition: No
Conversion: No

14 Floor 2 - W.I.C.



Dimensions: 12'8" x 5'0"
Area: 57 sq. ft
Counted as living area: Yes

Heated: Yes
Finished: Yes
Enclosed: Yes
Contiguous: Yes
Permitted: Yes
Wet space: No
Addition: No
Conversion: No

15 Floor 2 - WC



Dimensions: 6'7" x 3'1"
Area: 21 sq. ft
Counted as living area: Yes

Heated: Yes
Finished: Yes
Enclosed: Yes
Contiguous: Yes
Permitted: Yes
Wet space: Yes
Addition: No
Conversion: No

16 Floor 2 - Laundry



Dimensions: 5'10" x 9'3"
Area: 54 sq. ft
Counted as living area: Yes

Heated: Yes
Finished: Yes
Enclosed: Yes
Contiguous: Yes
Permitted: Yes
Wet space: No
Addition: No
Conversion: No

17 Floor 2 - Living Room



Dimensions: 17'9" x 19'10"
Area: 351 sq. ft
Counted as living area: Yes

Heated: Yes
Finished: Yes
Enclosed: Yes
Contiguous: Yes
Permitted: Yes
Wet space: No
Addition: No
Conversion: No

18 Floor 2 - Hall



Dimensions: 17'10" x 4'6"
Area: 54 sq. ft
Counted as living area: Yes

Heated: Yes
Finished: Yes
Enclosed: Yes
Contiguous: Yes
Permitted: Yes
Wet space: No
Addition: No
Conversion: No

19 Floor 2 - Dining Area



Dimensions: 16'11" x 9'8"
Area: 163 sq. ft
Counted as living area: Yes

Heated: Yes
Finished: Yes
Enclosed: Yes
Contiguous: Yes
Permitted: Yes
Wet space: No
Addition: No
Conversion: No

20 Floor 2 - Garage



Dimensions: 28'5" x 21'11"
Area: 607 sq. ft
Counted as living area: No

Heated: No
Finished: No
Enclosed: Yes
Contiguous: Yes
Permitted: Yes
Wet space: No
Addition: No
Conversion: No