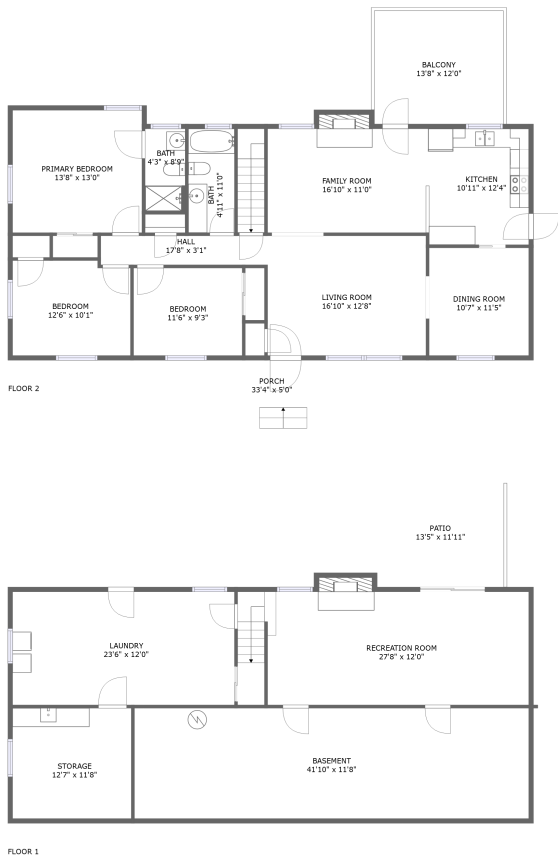


Home report

380 Lakeshore Terrace Road, Hardy, Franklin County, Virginia,
United States, 24101



Total Area: 1832 sq. ft

Below Ground: 407 sq. ft, Floor 2: 1425 sq. ft

Excluded: Basement 524 sq. ft, Storage 164 sq. ft, Utility Laundry 301 sq. ft, Outdoor
Patio 160 sq. ft, Fireplace 19 sq. ft, Outdoor Balcony 165 sq. ft, Outdoor Porch 167 sq. ft

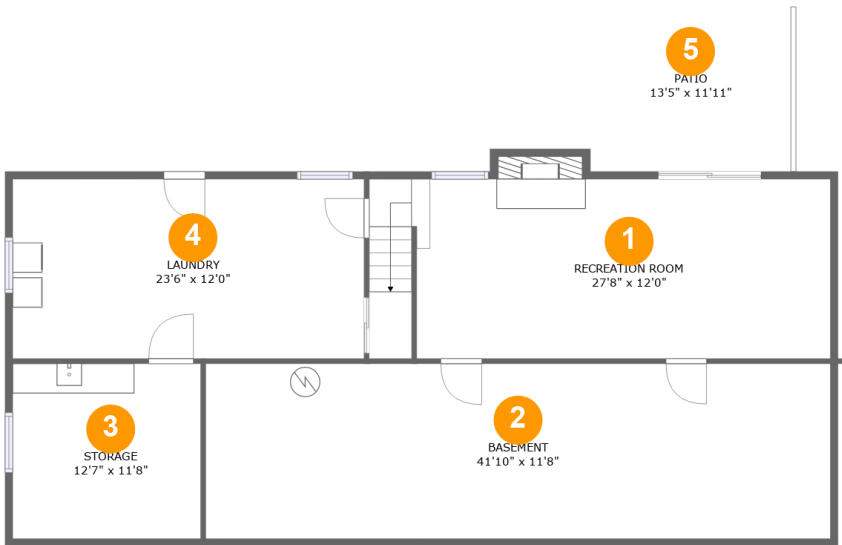
Property summary

 **2**
Floors

 **3**
Bedrooms

 **2**
Bathrooms

380 Lakeshore Terrace Road, Hardy, Franklin County, Virginia,
United States, 24101

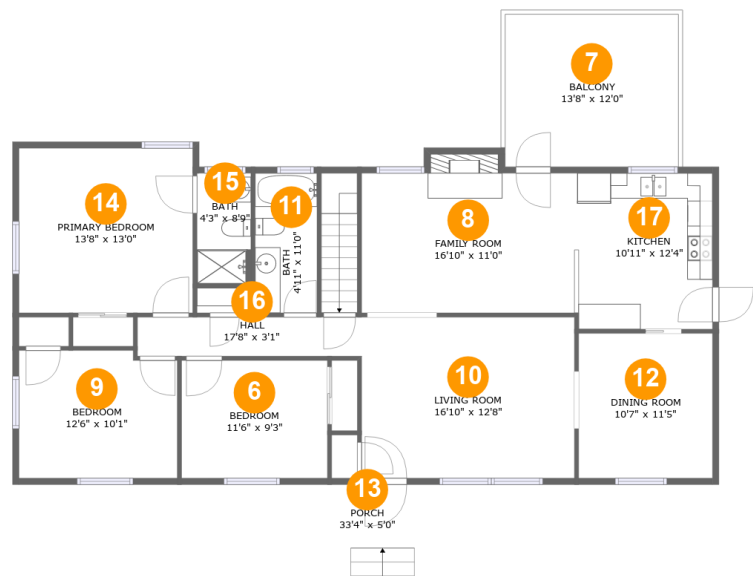


Room dimensions

Floor 1 Below ground Total:407sqft Excluded: 1159sqft

#		Max Dimensions	sqft	Included
1	Recreation Room	27'8" x 12'0"	376 sq. ft	Yes
2	Basement	41'10" x 11'8"	489 sq. ft	No
3	Storage	12'7" x 11'8"	147 sq. ft	No
4	Laundry	23'6" x 12'0"	282 sq. ft	No
5	Patio	13'5" x 11'11"	160 sq. ft	No

380 Lakeshore Terrace Road, Hardy, Franklin County, Virginia,
United States, 24101



Room dimensions

Floor 2 Total:1425sqft Excluded: 341sqft

#		Max Dimensions	sqft	Included
6	Bedroom	11'6" x 9'3"	107 sq. ft	Yes
7	Balcony	13'8" x 12'0"	164 sq. ft	No
8	Family Room	16'10" x 11'0"	193 sq. ft	Yes
9	Bedroom	12'6" x 10'1"	123 sq. ft	Yes
10	Living Room	16'10" x 12'8"	213 sq. ft	Yes
11	Bath	4'11" x 11'0"	54 sq. ft	Yes
12	Dining Room	10'7" x 11'5"	121 sq. ft	Yes
13	Porch	33'4" x 5'0"	167 sq. ft	No
14	Primary Bedroom	13'8" x 13'0"	178 sq. ft	Yes
15	Bath	4'3" x 8'9"	37 sq. ft	Yes
16	Hall	17'8" x 3'1"	54 sq. ft	Yes

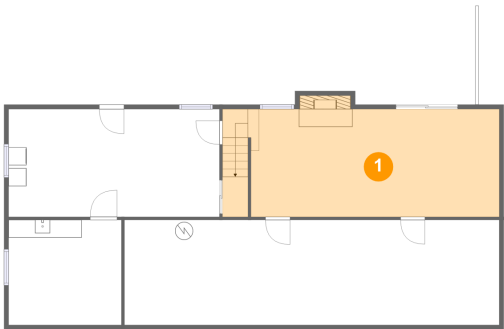
Home report

380 Lakeshore Terrace Road, Hardy, Franklin County, Virginia,
United States, 24101

#		Max Dimensions	sqft	Included
17	Kitchen	10'11" x 12'4"	134 sq. ft	Yes

380 Lakeshore Terrace Road, Hardy, Franklin County, Virginia,
United States, 24101

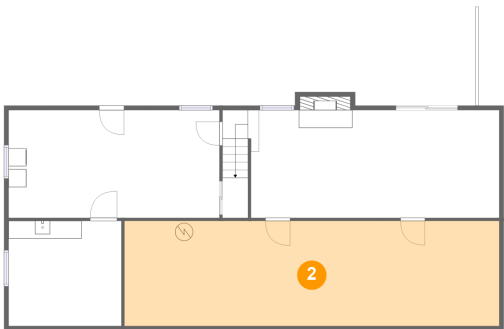
1 Floor 1 - Recreation Room



Max Dimensions: 27'8" x 12'0"
Calculated Area: 376 sq. ft
Included: Yes

Heated: Yes
Finished: Yes
Enclosed: Yes
Contiguous: Yes
Permitted: Yes
Wet space: No
Addition: No
Conversion: No

2 Floor 1 - Basement



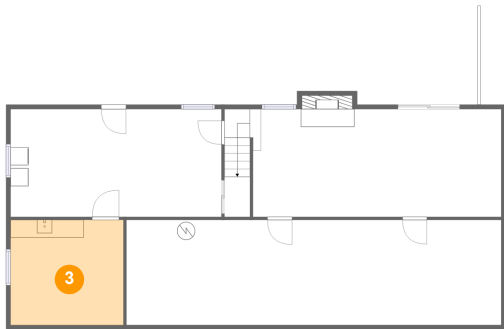
Max Dimensions: 41'10" x 11'8"
Calculated Area: 489 sq. ft
Included: No

Heated: Yes
Finished: No
Enclosed: Yes
Contiguous: Yes
Permitted: Yes
Wet space: No
Addition: No
Conversion: No

Home report

380 Lakeshore Terrace Road, Hardy, Franklin County, Virginia,
United States, 24101

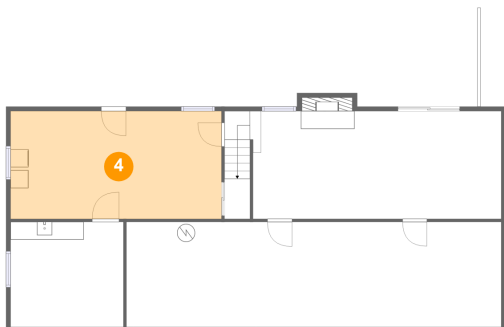
3 Floor 1 - Storage



Max Dimensions: 12'7" x 11'8"
Calculated Area: 147 sq. ft
Included: No

Heated: No
Finished: No
Enclosed: No
Contiguous: Yes
Permitted: Yes
Wet space: No
Addition: No
Conversion: No

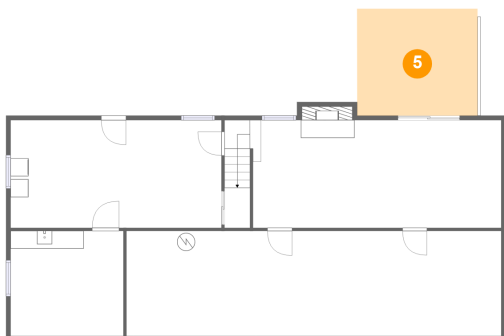
4 Floor 1 - Laundry



Max Dimensions: 23'6" x 12'0"
Calculated Area: 282 sq. ft
Included: No

Heated: Yes
Finished: No
Enclosed: Yes
Contiguous: Yes
Permitted: Yes
Wet space: No
Addition: No
Conversion: No

5 Floor 1 - Patio

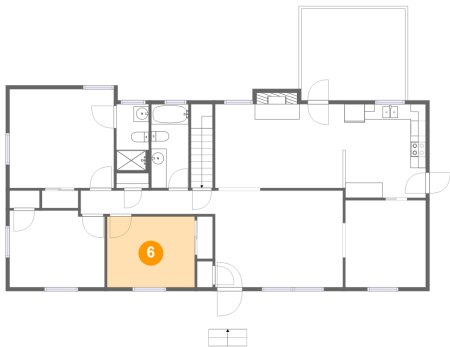


Max Dimensions: 13'5" x 11'11"
Calculated Area: 160 sq. ft
Included: No

Heated: No
Finished: Yes
Enclosed: No
Contiguous: Yes
Permitted: Yes
Wet space: No
Addition: No
Conversion: No

380 Lakeshore Terrace Road, Hardy, Franklin County, Virginia,
United States, 24101

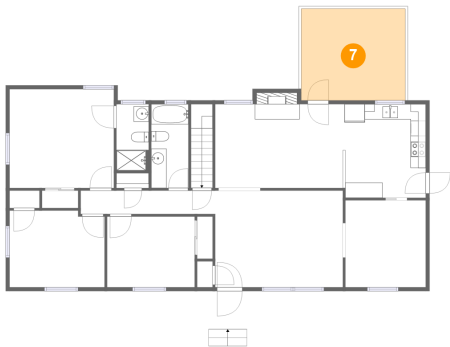
6 Floor 2 - Bedroom



Max Dimensions: 11'6" x 9'3"
Calculated Area: 107 sq. ft
Included: Yes

Heated: Yes
Finished: Yes
Enclosed: Yes
Contiguous: Yes
Permitted: Yes
Wet space: No
Addition: No
Conversion: No

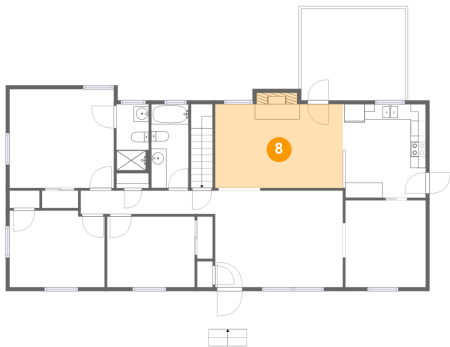
7 Floor 2 - Balcony



Max Dimensions: 13'8" x 12'0"
Calculated Area: 164 sq. ft
Included: No

Heated: No
Finished: Yes
Enclosed: No
Contiguous: Yes
Permitted: Yes
Wet space: No
Addition: No
Conversion: No

8 Floor 2 - Family Room

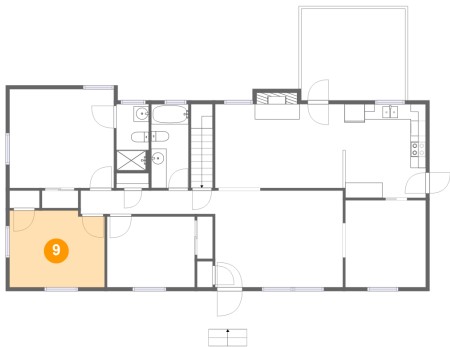


Max Dimensions: 16'10" x 11'0"
Calculated Area: 193 sq. ft
Included: Yes

Heated: Yes
Finished: Yes
Enclosed: Yes
Contiguous: Yes
Permitted: Yes
Wet space: No
Addition: No
Conversion: No

380 Lakeshore Terrace Road, Hardy, Franklin County, Virginia,
United States, 24101

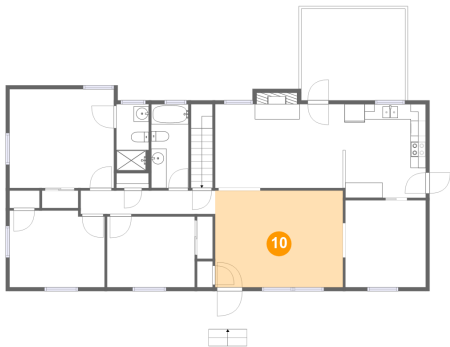
9 Floor 2 - Bedroom



Max Dimensions: 12'6" x 10'1"
Calculated Area: 123 sq. ft
Included: Yes

Heated: Yes
Finished: Yes
Enclosed: Yes
Contiguous: Yes
Permitted: Yes
Wet space: No
Addition: No
Conversion: No

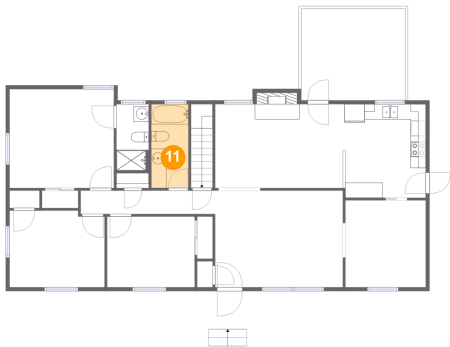
10 Floor 2 - Living Room



Max Dimensions: 16'10" x 12'8"
Calculated Area: 213 sq. ft
Included: Yes

Heated: Yes
Finished: Yes
Enclosed: Yes
Contiguous: Yes
Permitted: Yes
Wet space: No
Addition: No
Conversion: No

11 Floor 2 - Bath

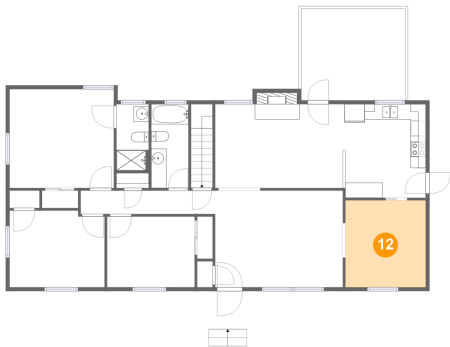


Max Dimensions: 4'11" x 11'0"
Calculated Area: 54 sq. ft
Included: Yes

Heated: Yes
Finished: Yes
Enclosed: Yes
Contiguous: Yes
Permitted: Yes
Wet space: Yes
Addition: No
Conversion: No

380 Lakeshore Terrace Road, Hardy, Franklin County, Virginia,
United States, 24101

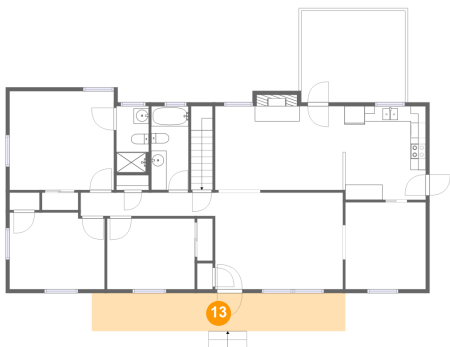
12 Floor 2 - Dining Room



Max Dimensions: 10'7" x 11'5"
Calculated Area: 121 sq. ft
Included: Yes

Heated: Yes
Finished: Yes
Enclosed: Yes
Contiguous: Yes
Permitted: Yes
Wet space: No
Addition: No
Conversion: No

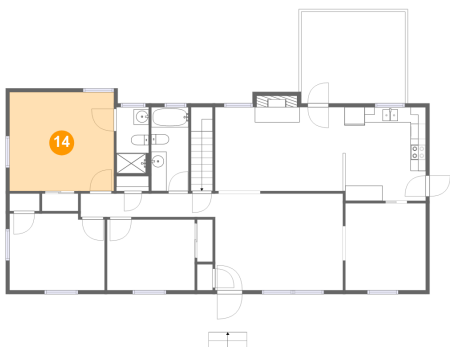
13 Floor 2 - Porch



Max Dimensions: 33'4" x 5'0"
Calculated Area: 167 sq. ft
Included: No

Heated: No
Finished: Yes
Enclosed: No
Contiguous: Yes
Permitted: Yes
Wet space: No
Addition: No
Conversion: No

14 Floor 2 - Primary Bedroom

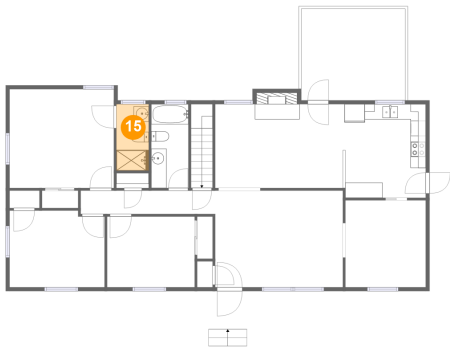


Max Dimensions: 13'8" x 13'0"
Calculated Area: 178 sq. ft
Included: Yes

Heated: Yes
Finished: Yes
Enclosed: Yes
Contiguous: Yes
Permitted: Yes
Wet space: No
Addition: No
Conversion: No

380 Lakeshore Terrace Road, Hardy, Franklin County, Virginia,
United States, 24101

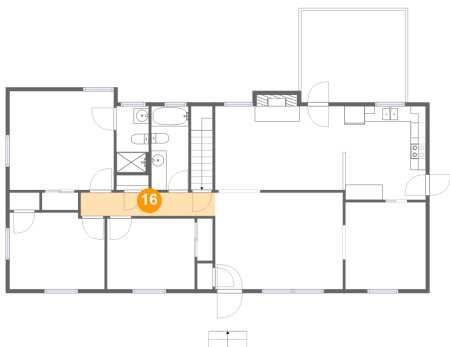
15 Floor 2 - Bath



Max Dimensions: 4'3" x 8'9"
Calculated Area: 37 sq. ft
Included: Yes

Heated: Yes
Finished: Yes
Enclosed: Yes
Contiguous: Yes
Permitted: Yes
Wet space: Yes
Addition: No
Conversion: No

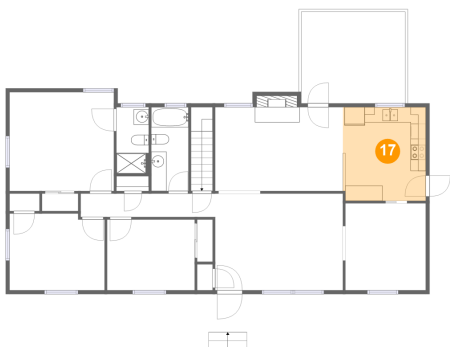
16 Floor 2 - Hall



Max Dimensions: 17'8" x 3'1"
Calculated Area: 54 sq. ft
Included: Yes

Heated: Yes
Finished: Yes
Enclosed: Yes
Contiguous: Yes
Permitted: Yes
Wet space: No
Addition: No
Conversion: No

17 Floor 2 - Kitchen



Max Dimensions: 10'11" x 12'4"
Calculated Area: 134 sq. ft
Included: Yes

Heated: Yes
Finished: Yes
Enclosed: Yes
Contiguous: Yes
Permitted: Yes
Wet space: No
Addition: No
Conversion: No