

89 Anne Blvd, Milton, ON

Main Building: Total Exterior Area Above Grade 2391.95 sq ft



Main Floor
Exterior Area 2391.95 sq ft

Basement (Below Grade)
Exterior Area 2413.01 sq ft



PREPARED: 2023.08.09



While regions are excluded from total floor area in iGUIDE floor plans, all room dimensions and floor areas must be considered approximate and are subject to independent verification.



**90% OF MY LISTINGS
GET ASKING, OVER ASKING
OR RECORD SALES!**



Christopher Higashi AMP
Sales Representative

Direct: (416) 892-7586
Office: (905) 878-7777

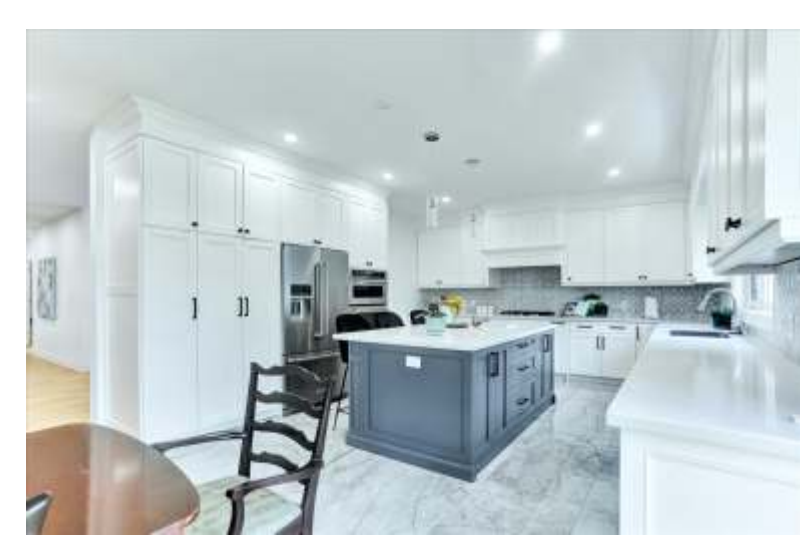


www.higashihomes.com
chigashi@trebnet.com

89 Anne Boulevard

Milton, Ontario

Presented by Christopher Higashi



This absolutely stunning 4 Bedroom, 3 Washroom 2500+ sq. ft. custom raised bungalow in the heart of Old Milton has outstanding curb appeal derived from a well-designed mix of exterior stone & stucco facias and boasts open concept living with 10 ft ceilings, wide plank beechwood flooring throughout, 4 spacious bedrooms, upgraded vanities, LED pot lights, designer electrical/light fixtures, California shutters, coffered ceilings, accent walls, iron spindled stair-cases, fully fenced yard and 5 car parking. The crowning jewel of this Old Milton area gem can be found in its massive all-white designer kitchen with quartz countertops, matching backsplash, extended soft-close cabinets, undermount lighting, fully warrantied Kitchen-aide appliances, double oven, gas-stove cooktop, built-in ducted -overhead range hood, deep basin sink, 5-seater kitchen island, 2 x 2 tiling and so much more. This beauty is centrally located in the heart of Milton's popular Old Milton district that is walking distance to various schools, trails, parks, plazas, amenities, boutique shops, public transit, Milton's historical downtown core, and minutes to Milton Go Station, HWYs 401/407/403 and so much more.

