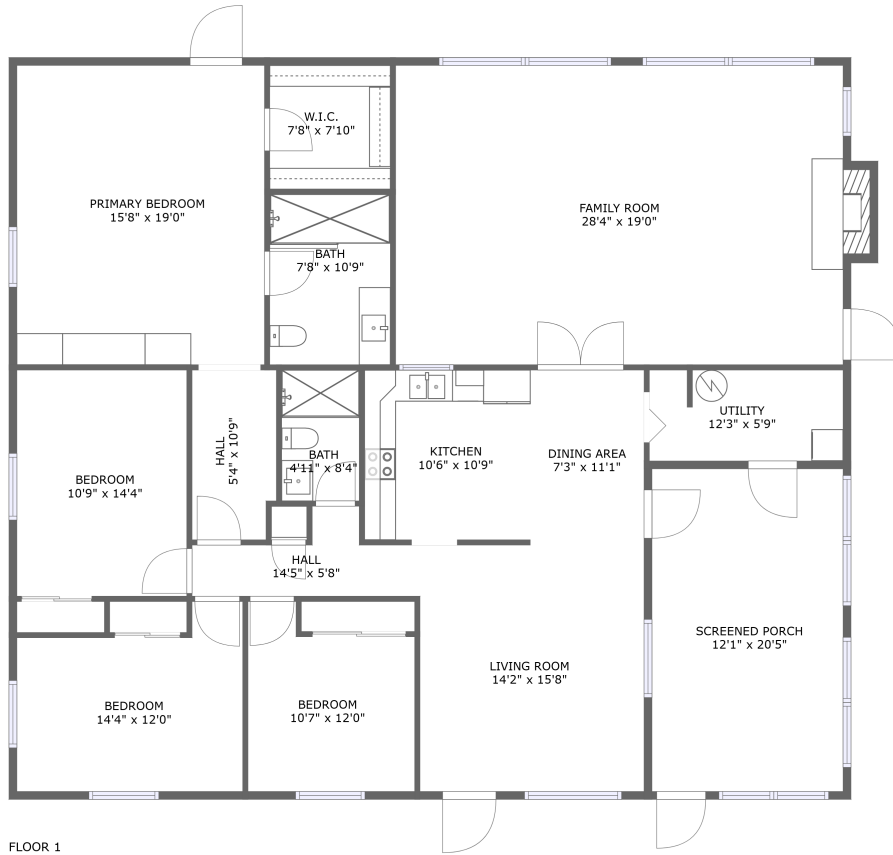


3805 61st Street East, Palmetto, Manatee County, Florida, United States, 34221

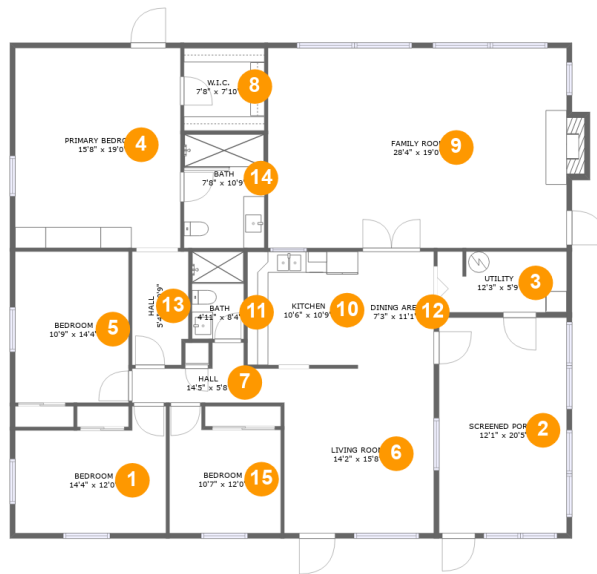


Property Summary

0 garages **4** bedrooms **2** bathrooms **0** half baths

1 floors **2,242** Gross Living Area sqft **2,517** total sqft

3805 61st Street East, Palmetto, Manatee County, Florida, United States, 34221



Room Dimensions

Floor 1

Total sqft: 2517

Living area: 2242

#	Room name	Dimensions	Area (sqft)	Counted as Living Area
1	Bedroom	14'4" x 12'0"	147 sq. ft	Yes
2	Screened Porch	12'1" x 20'5"	247 sq. ft	No
3	Utility	12'3" x 5'9"	70 sq. ft	Yes
4	Primary Bedroom	15'8" x 19'0"	297 sq. ft	Yes
5	Bedroom	10'9" x 14'4"	154 sq. ft	Yes
6	Living Room	14'2" x 15'8"	222 sq. ft	Yes
7	Hall	14'5" x 5'8"	55 sq. ft	Yes
8	W.i.c.	7'8" x 7'10"	60 sq. ft	Yes
9	Family Room	28'4" x 19'0"	547 sq. ft	Yes
10	Kitchen	10'6" x 10'9"	113 sq. ft	Yes
11	Bath	4'11" x 8'4"	41 sq. ft	Yes

Scan captured on Thu, 29 Aug 2024 20:06:18 GMT

Information is calculated by CubiCasa technology; deemed highly reliable but not guaranteed.

**3805 61st Street East, Palmetto, Manatee
County, Florida, United States, 34221**

#	Room name	Dimensions	Area (sqft)	Counted as Living Area
12	Dining Area	7'3" x 11'1"	80 sq. ft	Yes
13	Hall	5'4" x 10'9"	56 sq. ft	Yes
14	Bath	7'8" x 10'9"	82 sq. ft	Yes
15	Bedroom	10'7" x 12'0"	110 sq. ft	Yes

3805 61st Street East, Palmetto, Manatee County, Florida, United States, 34221

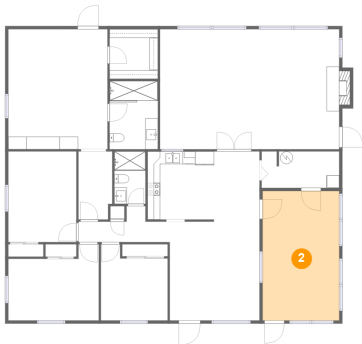
1 Floor 1 - Bedroom



Dimensions: 14'4" x 12'0"
Area: 147 sq. ft
Counted as Living Area:
Yes

Heated: Yes
Finished: Yes
Enclosed: Yes
Contiguous:
Yes
Permitted: Yes
Wet Space: No
Addition: No
Conversion: No

2 Floor 1 - Screened Porch



Dimensions: 12'1" x 20'5"
Area: 247 sq. ft
Counted as Living Area: No

Heated: No
Finished: Yes
Enclosed: No
Contiguous: Yes
Permitted: Yes
Wet Space: No
Addition: No
Conversion: No

3805 61st Street East, Palmetto, Manatee County, Florida, United States, 34221

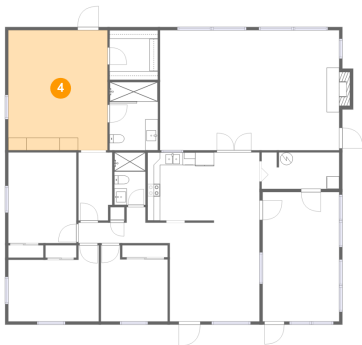
3 Floor 1 - Utility



Dimensions: 12'3" x 5'9"
Area: 70 sq. ft
Counted as Living Area:
Yes

Heated: Yes
Finished: Yes
Enclosed: Yes
Contiguous:
Yes
Permitted: Yes
Wet Space: No
Addition: No
Conversion: No

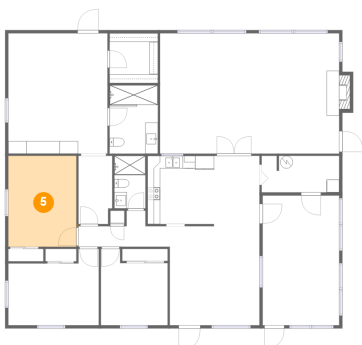
4 Floor 1 - Primary Bedroom



Dimensions: 15'8" x 19'0"
Area: 297 sq. ft
Counted as Living Area:
Yes

Heated: Yes
Finished: Yes
Enclosed: Yes
Contiguous:
Yes
Permitted: Yes
Wet Space: No
Addition: No
Conversion: No

5 Floor 1 - Bedroom

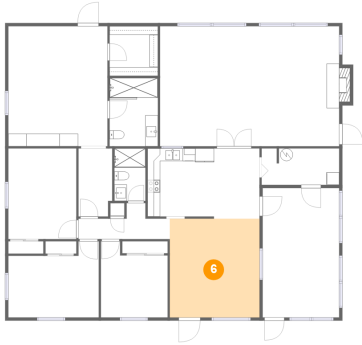


Dimensions: 10'9" x 14'4"
Area: 154 sq. ft
Counted as Living Area:
Yes

Heated: Yes
Finished: Yes
Enclosed: Yes
Contiguous:
Yes
Permitted: Yes
Wet Space: No
Addition: No
Conversion: No

3805 61st Street East, Palmetto, Manatee County, Florida, United States, 34221

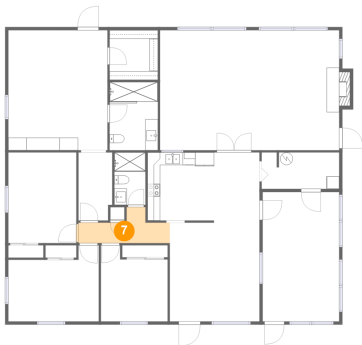
6 Floor 1 - Living Room



Dimensions: 14'2" x 15'8"
Area: 222 sq. ft
Counted as Living Area:
Yes

Heated: Yes
Finished: Yes
Enclosed: Yes
Contiguous:
Yes
Permitted: Yes
Wet Space: No
Addition: No
Conversion: No

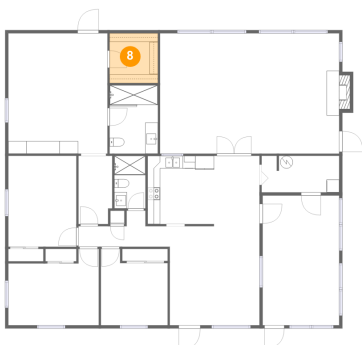
7 Floor 1 - Hall



Dimensions: 14'5" x 5'8"
Area: 55 sq. ft
Counted as Living Area:
Yes

Heated: Yes
Finished: Yes
Enclosed: Yes
Contiguous:
Yes
Permitted: Yes
Wet Space: No
Addition: No
Conversion: No

8 Floor 1 - W.i.c.

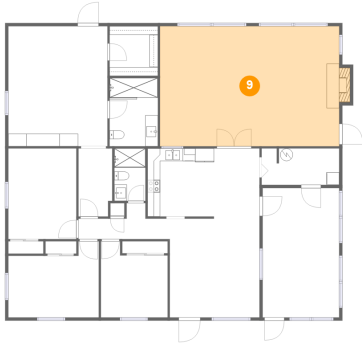


Dimensions: 7'8" x 7'10"
Area: 60 sq. ft
Counted as Living Area:
Yes

Heated: Yes
Finished: Yes
Enclosed: Yes
Contiguous:
Yes
Permitted: Yes
Wet Space: No
Addition: No
Conversion: No

3805 61st Street East, Palmetto, Manatee County, Florida, United States, 34221

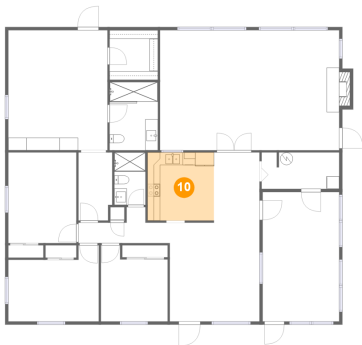
9 Floor 1 - Family Room



Dimensions: 28'4" x 19'0"
Area: 547 sq. ft
Counted as Living Area:
Yes

Heated: Yes
Finished: Yes
Enclosed: Yes
Contiguous:
Yes
Permitted: Yes
Wet Space: No
Addition: No
Conversion: No

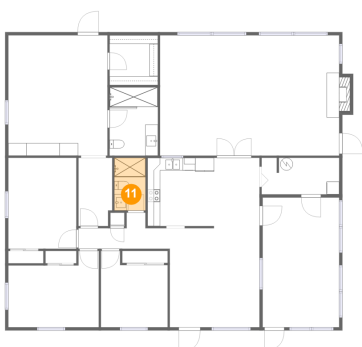
10 Floor 1 - Kitchen



Dimensions: 10'6" x 10'9"
Area: 113 sq. ft
Counted as Living Area:
Yes

Heated: Yes
Finished: Yes
Enclosed: Yes
Contiguous:
Yes
Permitted: Yes
Wet Space: No
Addition: No
Conversion: No

11 Floor 1 - Bath

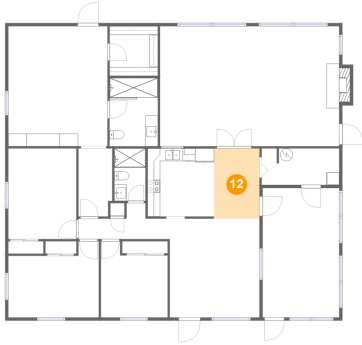


Dimensions: 4'11" x 8'4"
Area: 41 sq. ft
Counted as Living Area:
Yes

Heated: Yes
Finished: Yes
Enclosed: Yes
Contiguous:
Yes
Permitted: Yes
Wet Space: Yes
Addition: No
Conversion: No

3805 61st Street East, Palmetto, Manatee County, Florida, United States, 34221

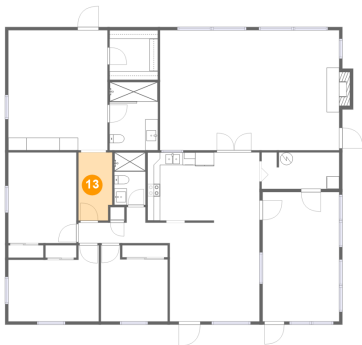
12 Floor 1 - Dining Area



Dimensions: 7'3" x 11'1"
Area: 80 sq. ft
Counted as Living Area:
Yes

Heated: Yes
Finished: Yes
Enclosed: Yes
Contiguous:
Yes
Permitted: Yes
Wet Space: No
Addition: No
Conversion: No

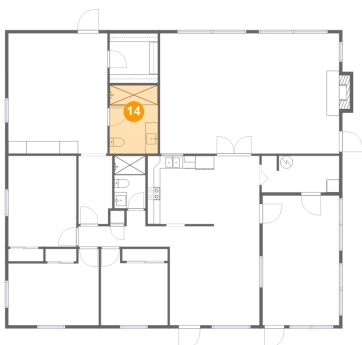
13 Floor 1 - Hall



Dimensions: 5'4" x 10'9"
Area: 56 sq. ft
Counted as Living Area:
Yes

Heated: Yes
Finished: Yes
Enclosed: Yes
Contiguous:
Yes
Permitted: Yes
Wet Space: No
Addition: No
Conversion: No

14 Floor 1 - Bath

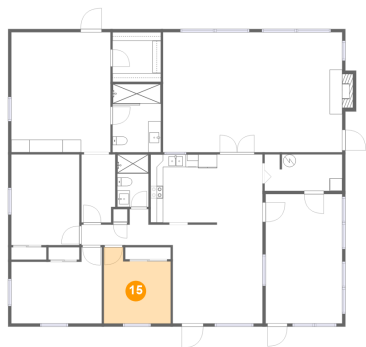


Dimensions: 7'8" x 10'9"
Area: 82 sq. ft
Counted as Living Area:
Yes

Heated: Yes
Finished: Yes
Enclosed: Yes
Contiguous:
Yes
Permitted: Yes
Wet Space: Yes
Addition: No
Conversion: No

3805 61st Street East, Palmetto, Manatee County, Florida, United States, 34221

15 Floor 1 - Bedroom



Dimensions: 10'7" x 12'0"
Area: 110 sq. ft
Counted as Living Area:
Yes

Heated: Yes
Finished: Yes
Enclosed: Yes
Contiguous:
Yes
Permitted: Yes
Wet Space: No
Addition: No
Conversion: No