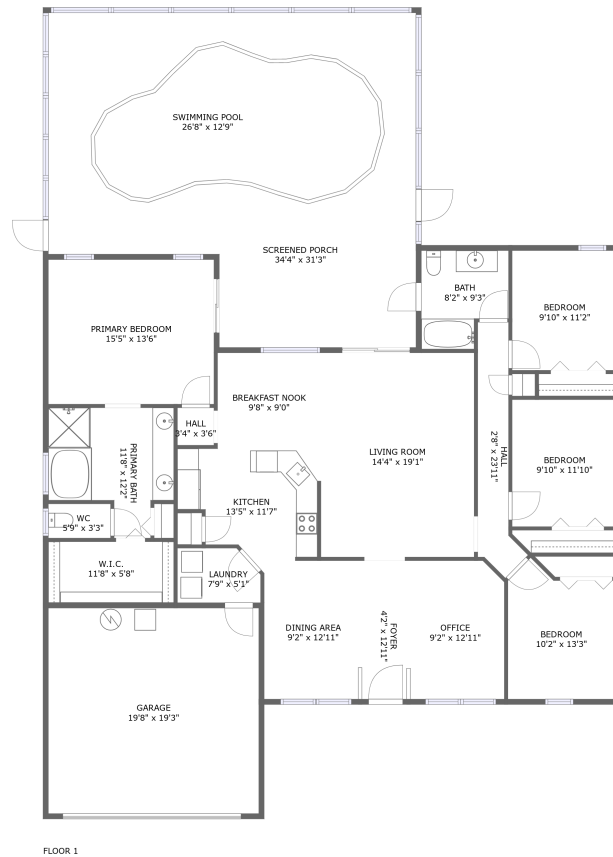



4287 Tremblay Way, East Lake, Palm Harbor, Pinellas County, Florida, United States, 34685



Property summary

 **1** Garages

 **4** Bedrooms

 **2** Bathrooms

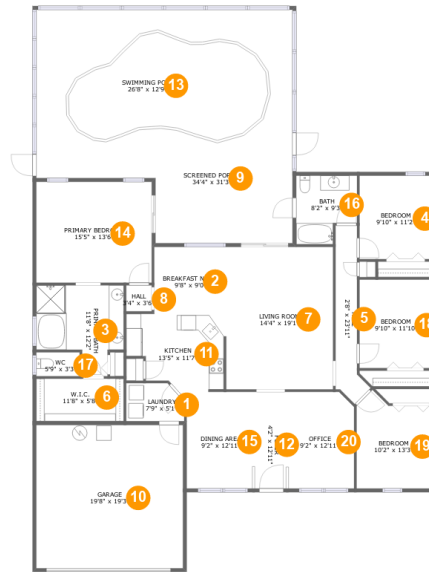
 **0** Half baths

 **1** Floors

 **1,957** Gross living area sqft

 **3,053** Total sqft

4287 Tremblay Way, East Lake, Palm Harbor, Pinellas County, Florida, United States, 34685



Room dimensions

Floor 1

Total sqft: 3053 Living area: 1957

#		Dimensions	sqft	Counted as living area
1	Utility	7'9" x 5'1"	37 sq. ft	Yes
2	Nook	9'8" x 9'0"	87 sq. ft	Yes
3	Bath	11'8" x 12'2"	114 sq. ft	Yes
4	Bedroom	9'10" x 11'2"	110 sq. ft	Yes
5	Hall	2'8" x 23'11"	69 sq. ft	Yes
6	Cl	11'8" x 5'8"	67 sq. ft	Yes
7	Living Room	14'4" x 19'1"	274 sq. ft	Yes
8	Hall	3'4" x 3'6"	12 sq. ft	Yes
9	Outdoor	34'4" x 31'3"	937 sq. ft	No
10	Garage	19'8" x 19'3"	378 sq. ft	No
11	Kitchen	13'5" x 11'7"	121 sq. ft	Yes

**4287 Tremblay Way, East Lake, Palm Harbor, Pinellas
County, Florida, United States, 34685**

#		Dimensions	sqft	Counted as living area
12	Entry	4'2" x 12'11"	54 sq. ft	Yes
13	Swimming Pool	26'8" x 12'9"	284 sq. ft	No
14	Bedroom	15'5" x 13'6"	209 sq. ft	Yes
15	Dining Room	9'2" x 12'11"	117 sq. ft	Yes
16	Bath	8'2" x 9'3"	66 sq. ft	Yes
17	Bath	5'9" x 3'3"	19 sq. ft	Yes
18	Bedroom	9'10" x 11'10"	117 sq. ft	Yes
19	Bedroom	10'2" x 13'3"	118 sq. ft	Yes
20	Office	9'2" x 12'11"	116 sq. ft	Yes

4287 Tremblay Way, East Lake, Palm Harbor, Pinellas County, Florida, United States, 34685

1 Floor 1 - Utility



Dimensions: 7'9" x 5'1"
Area: 37 sq. ft
Counted as living area: Yes

Heated: Yes
Finished: Yes
Enclosed: Yes
Contiguous: Yes
Permitted: Yes
Wet space: No
Addition: No
Conversion: No

2 Floor 1 - Nook

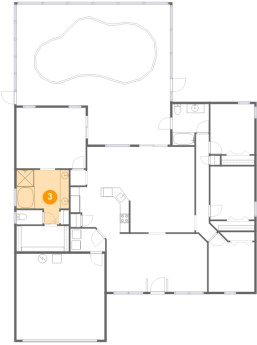


Dimensions: 9'8" x 9'0"
Area: 87 sq. ft
Counted as living area: Yes

Heated: Yes
Finished: Yes
Enclosed: Yes
Contiguous: Yes
Permitted: Yes
Wet space: No
Addition: No
Conversion: No

4287 Tremblay Way, East Lake, Palm Harbor, Pinellas County, Florida, United States, 34685

3 Floor 1 - Bath



Dimensions: 11'8" x 12'2"
Area: 114 sq. ft
Counted as living area: Yes

Heated: Yes
Finished: Yes
Enclosed: Yes
Contiguous: Yes
Permitted: Yes
Wet space: Yes
Addition: No
Conversion: No

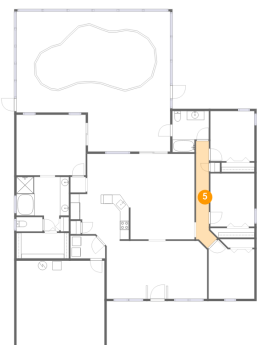
4 Floor 1 - Bedroom



Dimensions: 9'10" x 11'2"
Area: 110 sq. ft
Counted as living area: Yes

Heated: Yes
Finished: Yes
Enclosed: Yes
Contiguous: Yes
Permitted: Yes
Wet space: No
Addition: No
Conversion: No

5 Floor 1 - Hall



Dimensions: 2'8" x 23'11"
Area: 69 sq. ft
Counted as living area: Yes

Heated: Yes
Finished: Yes
Enclosed: Yes
Contiguous: Yes
Permitted: Yes
Wet space: No
Addition: No
Conversion: No

4287 Tremblay Way, East Lake, Palm Harbor, Pinellas County, Florida, United States, 34685

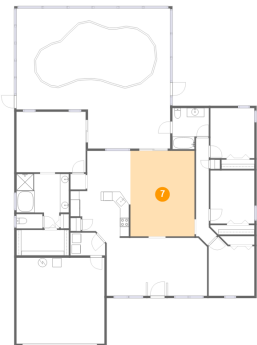
6 Floor 1 - Cl



Dimensions: 11'8" x 5'8"
Area: 67 sq. ft
Counted as living area: Yes

Heated: Yes
Finished: Yes
Enclosed: Yes
Contiguous: Yes
Permitted: Yes
Wet space: No
Addition: No
Conversion: No

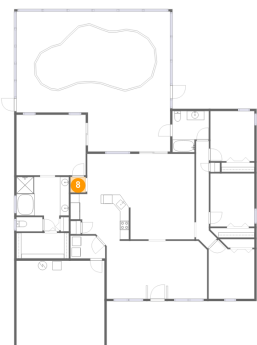
7 Floor 1 - Living Room



Dimensions: 14'4" x 19'1"
Area: 274 sq. ft
Counted as living area: Yes

Heated: Yes
Finished: Yes
Enclosed: Yes
Contiguous: Yes
Permitted: Yes
Wet space: No
Addition: No
Conversion: No

8 Floor 1 - Hall

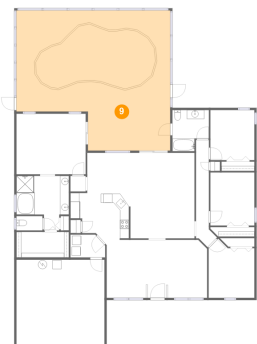


Dimensions: 3'4" x 3'6"
Area: 12 sq. ft
Counted as living area: Yes

Heated: Yes
Finished: Yes
Enclosed: Yes
Contiguous: Yes
Permitted: Yes
Wet space: No
Addition: No
Conversion: No

4287 Tremblay Way, East Lake, Palm Harbor, Pinellas County, Florida, United States, 34685

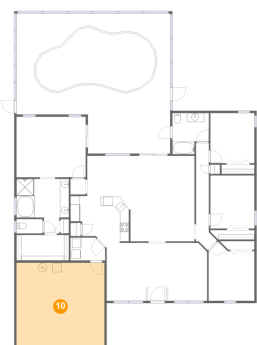
9 Floor 1 - Outdoor



Dimensions: 34'4" x 31'3"
Area: 937 sq. ft
Counted as living area: No

Heated: No
Finished: Yes
Enclosed: No
Contiguous: Yes
Permitted: Yes
Wet space: No
Addition: No
Conversion: No

10 Floor 1 - Garage



Dimensions: 19'8" x 19'3"
Area: 378 sq. ft
Counted as living area: No

Heated: No
Finished: No
Enclosed: Yes
Contiguous: Yes
Permitted: Yes
Wet space: No
Addition: No
Conversion: No

11 Floor 1 - Kitchen



Dimensions: 13'5" x 11'7"
Area: 121 sq. ft
Counted as living area: Yes

Heated: Yes
Finished: Yes
Enclosed: Yes
Contiguous: Yes
Permitted: Yes
Wet space: No
Addition: No
Conversion: No

4287 Tremblay Way, East Lake, Palm Harbor, Pinellas County, Florida, United States, 34685

12 Floor 1 - Entry



Dimensions: 4'2" x 12'11"
Area: 54 sq. ft
Counted as living area: Yes

Heated: Yes
Finished: Yes
Enclosed: Yes
Contiguous: Yes
Permitted: Yes
Wet space: No
Addition: No
Conversion: No

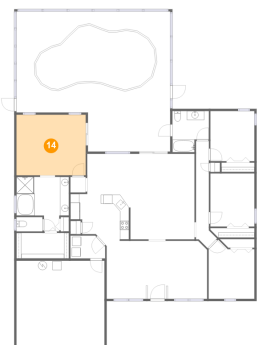
13 Floor 1 - Swimming Pool



Dimensions: 26'8" x 12'9"
Area: 284 sq. ft
Counted as living area: No

Heated: No
Finished: No
Enclosed: No
Contiguous: Yes
Permitted: No
Wet space: No
Addition: No
Conversion: No

14 Floor 1 - Bedroom



Dimensions: 15'5" x 13'6"
Area: 209 sq. ft
Counted as living area: Yes

Heated: Yes
Finished: Yes
Enclosed: Yes
Contiguous: Yes
Permitted: Yes
Wet space: No
Addition: No
Conversion: No

4287 Tremblay Way, East Lake, Palm Harbor, Pinellas County, Florida, United States, 34685

15 Floor 1 - Dining Room



Dimensions: 9'2" x 12'11"
Area: 117 sq. ft
Counted as living area: Yes

Heated: Yes
Finished: Yes
Enclosed: Yes
Contiguous: Yes
Permitted: Yes
Wet space: No
Addition: No
Conversion: No

16 Floor 1 - Bath



Dimensions: 8'2" x 9'3"
Area: 66 sq. ft
Counted as living area: Yes

Heated: Yes
Finished: Yes
Enclosed: Yes
Contiguous: Yes
Permitted: Yes
Wet space: Yes
Addition: No
Conversion: No

17 Floor 1 - Bath



Dimensions: 5'9" x 3'3"
Area: 19 sq. ft
Counted as living area: Yes

Heated: Yes
Finished: Yes
Enclosed: Yes
Contiguous: Yes
Permitted: Yes
Wet space: Yes
Addition: No
Conversion: No

4287 Tremblay Way, East Lake, Palm Harbor, Pinellas County, Florida, United States, 34685

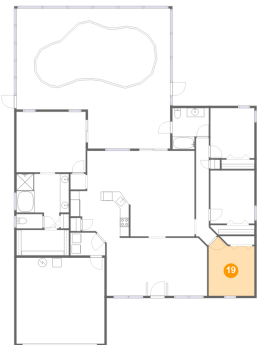
18 Floor 1 - Bedroom



Dimensions: 9'10" x 11'10"
Area: 117 sq. ft
Counted as living area: Yes

Heated: Yes
Finished: Yes
Enclosed: Yes
Contiguous: Yes
Permitted: Yes
Wet space: No
Addition: No
Conversion: No

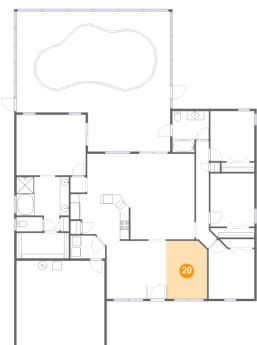
19 Floor 1 - Bedroom



Dimensions: 10'2" x 13'3"
Area: 118 sq. ft
Counted as living area: Yes

Heated: Yes
Finished: Yes
Enclosed: Yes
Contiguous: Yes
Permitted: Yes
Wet space: No
Addition: No
Conversion: No

20 Floor 1 - Office



Dimensions: 9'2" x 12'11"
Area: 116 sq. ft
Counted as living area: Yes

Heated: Yes
Finished: Yes
Enclosed: Yes
Contiguous: Yes
Permitted: Yes
Wet space: No
Addition: No
Conversion: No