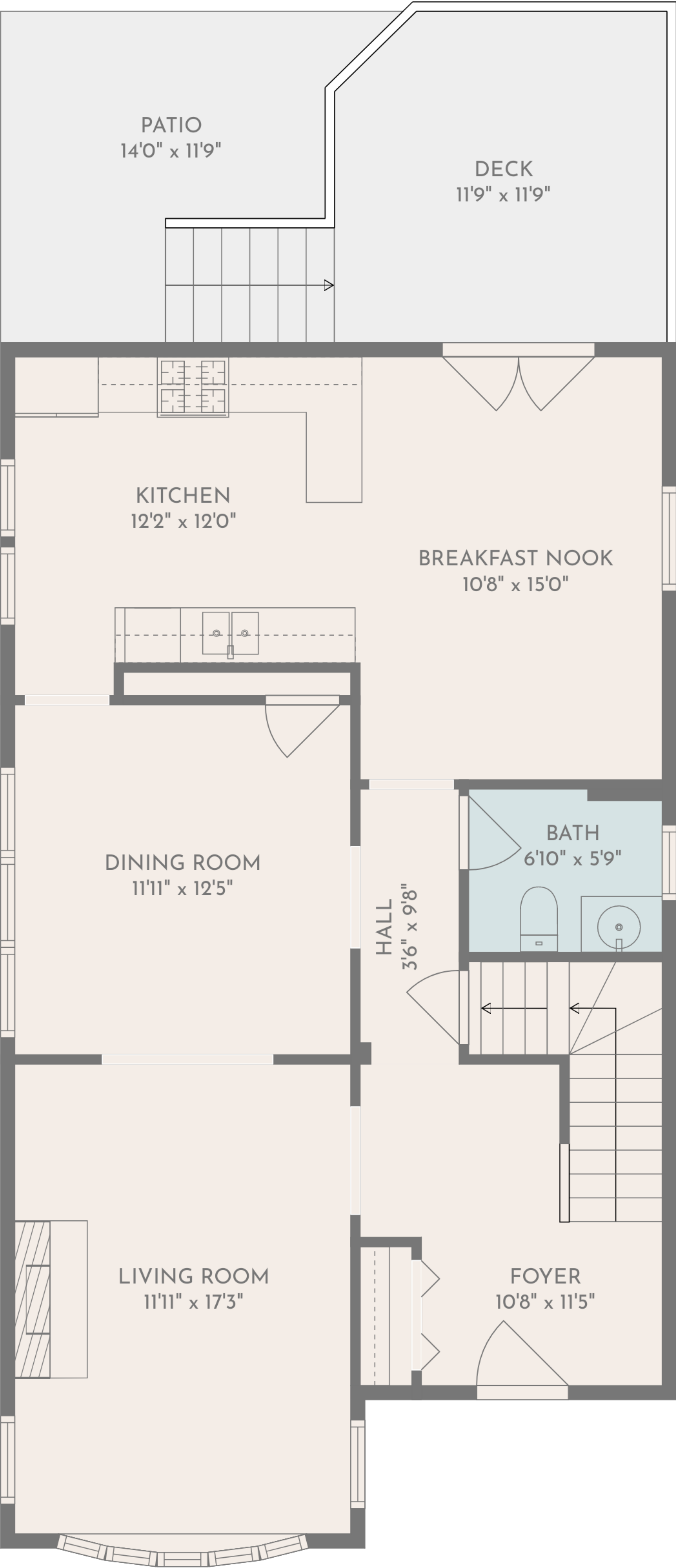


**TOTAL: 2929 sq. ft**  
BELOW GROUND: 455 sq. ft, FLOOR 2: 901 sq. ft, FLOOR 3: 1104 sq. ft, FLOOR 4: 36 sq. ft, FLOOR 5: 433 sq. ft  
EXCLUDED AREAS: STORAGE: 57 sq. ft, BASEMENT: 443 sq. ft, DECK: 158 sq. ft,  
PATIO: 125 sq. ft, GARAGE: 552 sq. ft, WALLS: 303 sq. ft

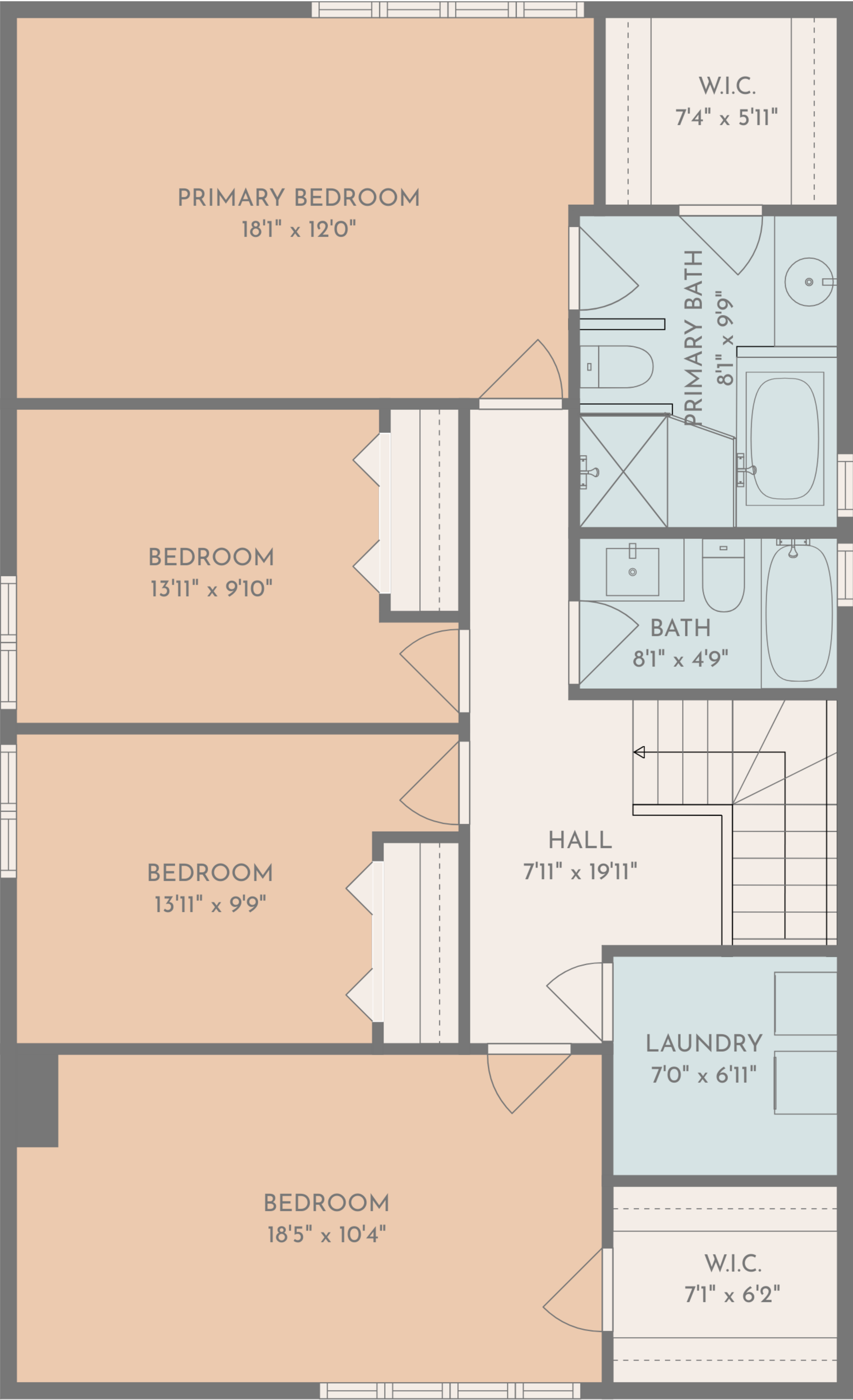


**TOTAL: 2929 sq. ft**

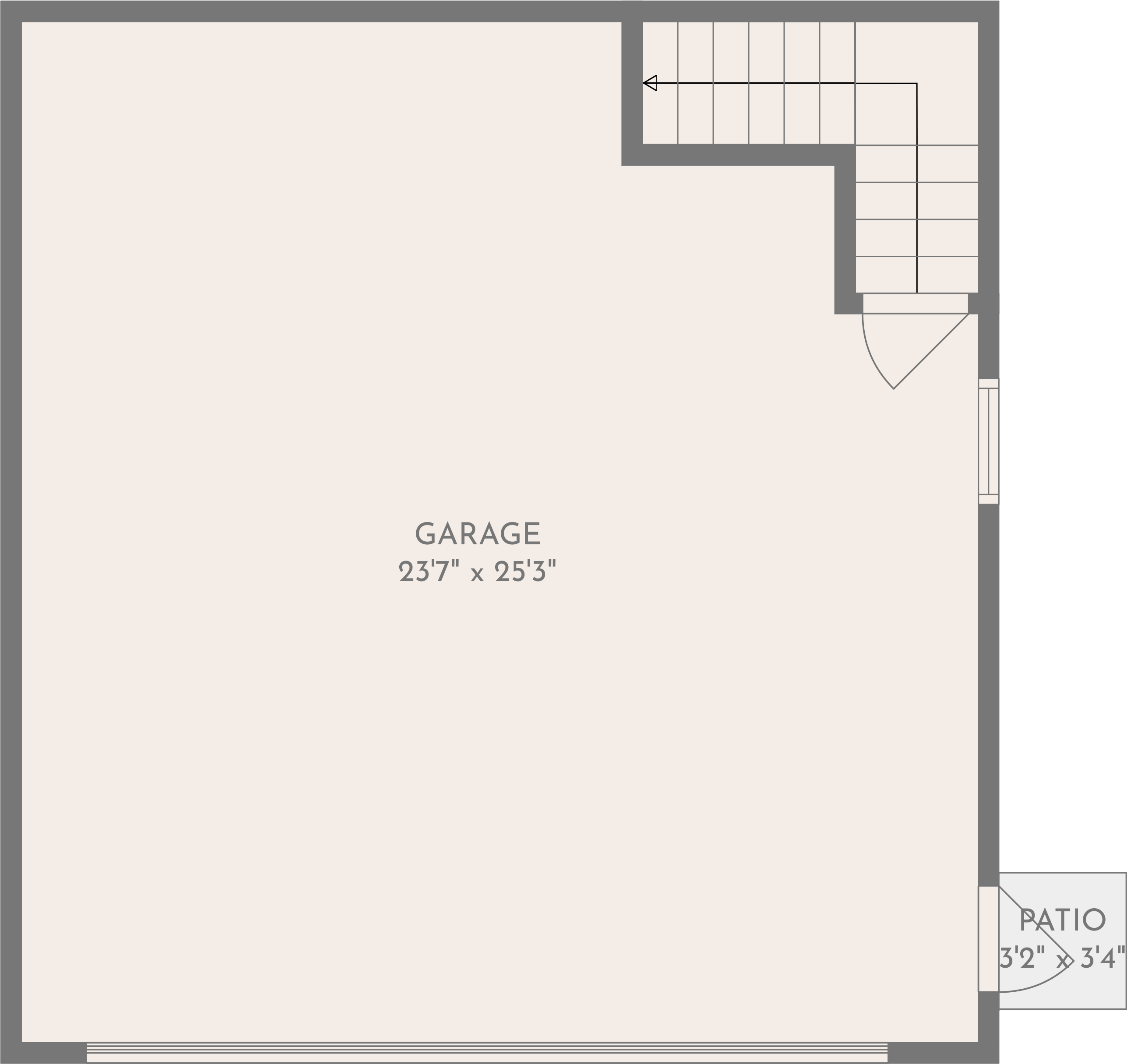
BELOW GROUND: 455 sq. ft, FLOOR 2: 901 sq. ft, FLOOR 3: 1104 sq. ft, FLOOR 4: 36 sq. ft, FLOOR 5: 433 sq. ft  
EXCLUDED AREAS: STORAGE: 57 sq. ft, BASEMENT: 443 sq. ft, DECK: 158 sq. ft,  
PATIO: 125 sq. ft, GARAGE: 552 sq. ft, WALLS: 303 sq. ft

FLOOR PLAN CREATED BY CUBICASA APP. MEASUREMENTS DEEMED HIGHLY RELIABLE BUT NOT GUARANTEED.



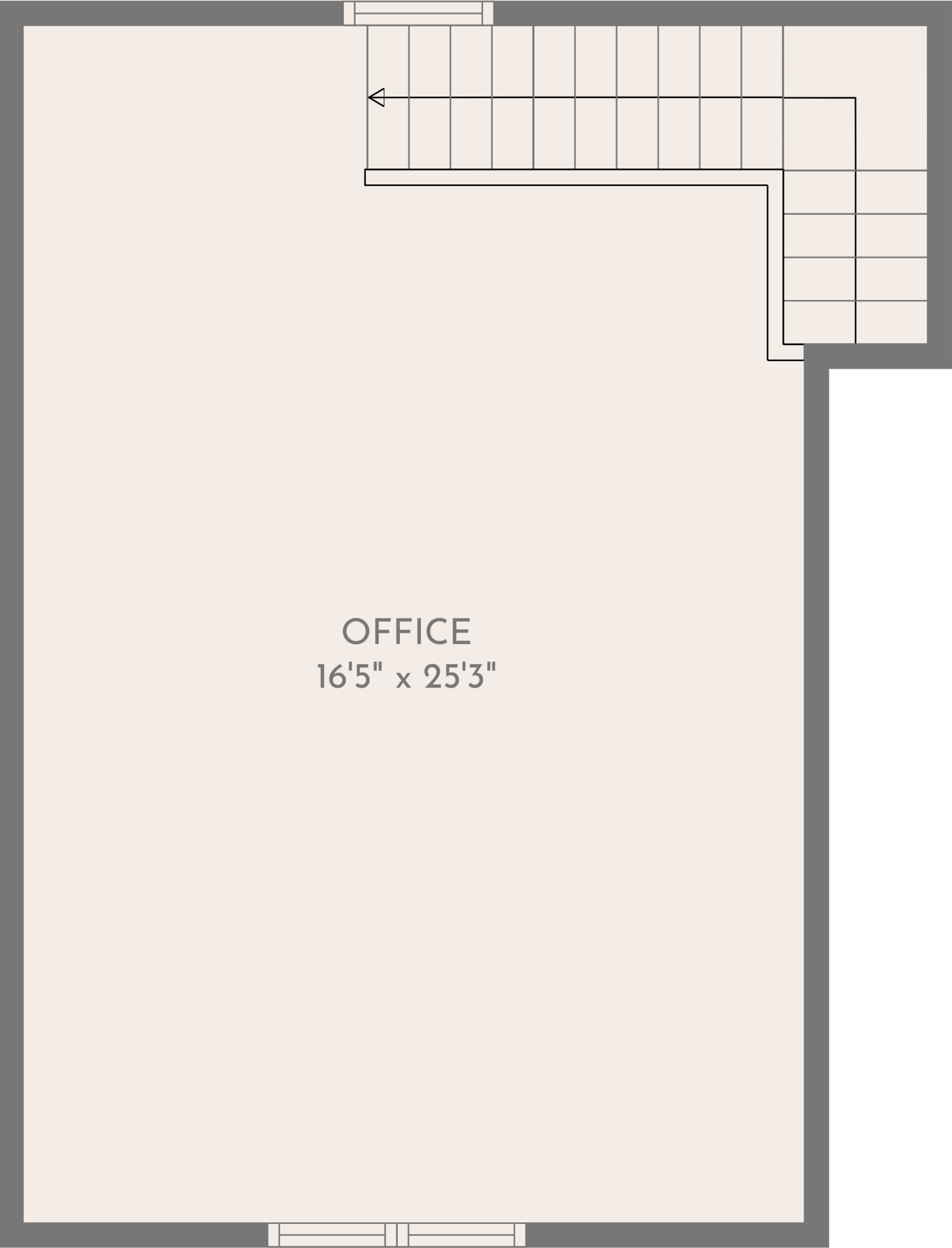


**TOTAL: 2929 sq. ft**  
BELOW GROUND: 455 sq. ft, FLOOR 2: 901 sq. ft, FLOOR 3: 1104 sq. ft, FLOOR 4: 36 sq. ft, FLOOR 5: 433 sq. ft  
EXCLUDED AREAS: STORAGE: 57 sq. ft, BASEMENT: 443 sq. ft, DECK: 158 sq. ft,  
PATIO: 125 sq. ft, GARAGE: 552 sq. ft, WALLS: 303 sq. ft



**TOTAL: 2929 sq. ft**

BELOW GROUND: 455 sq. ft, FLOOR 2: 901 sq. ft, FLOOR 3: 1104 sq. ft, FLOOR 4: 36 sq. ft, FLOOR 5: 433 sq. ft  
EXCLUDED AREAS: STORAGE: 57 sq. ft, BASEMENT: 443 sq. ft, DECK: 158 sq. ft,  
PATIO: 125 sq. ft, GARAGE: 552 sq. ft, WALLS: 303 sq. ft

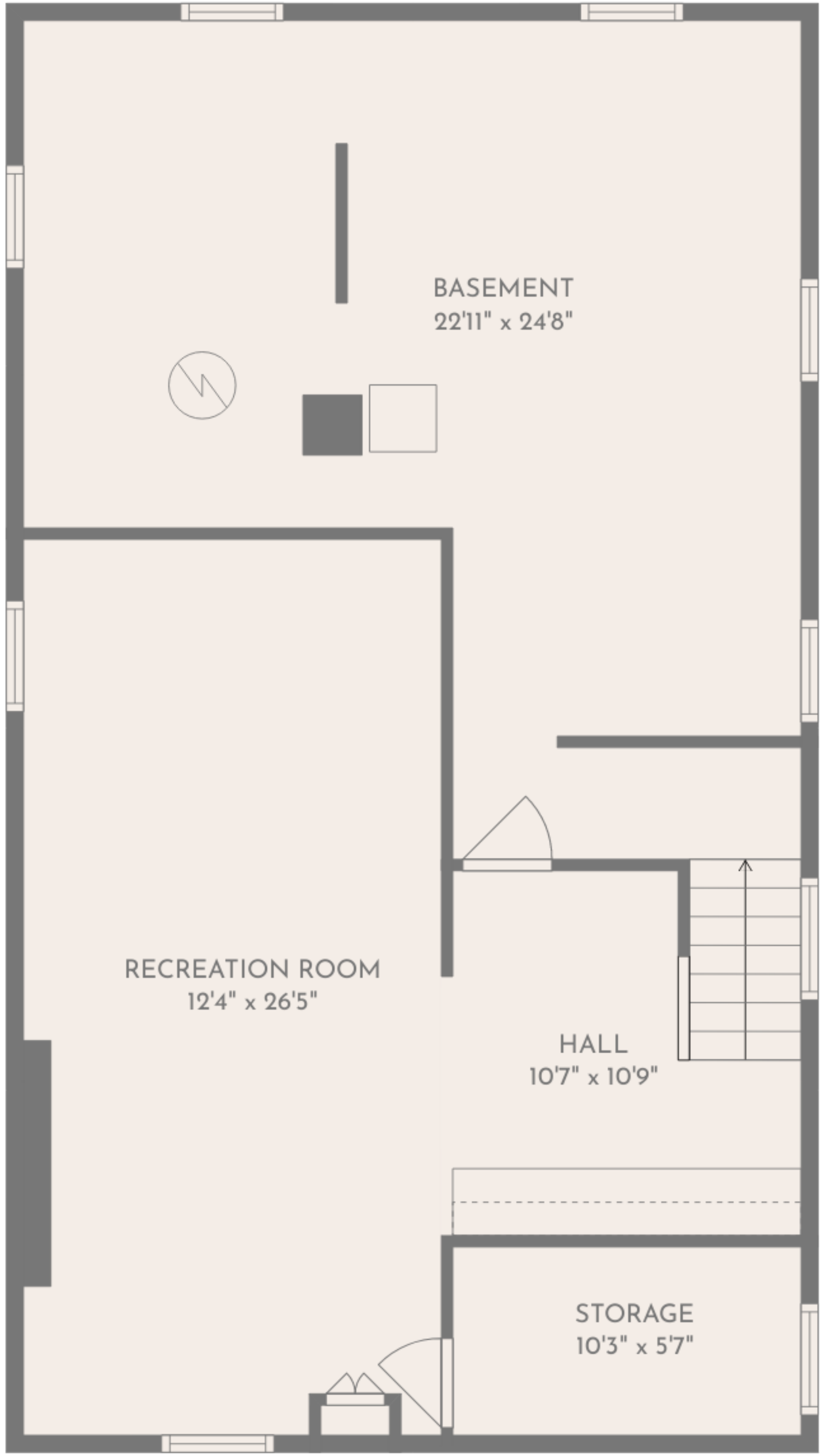


**TOTAL: 2929 sq. ft**

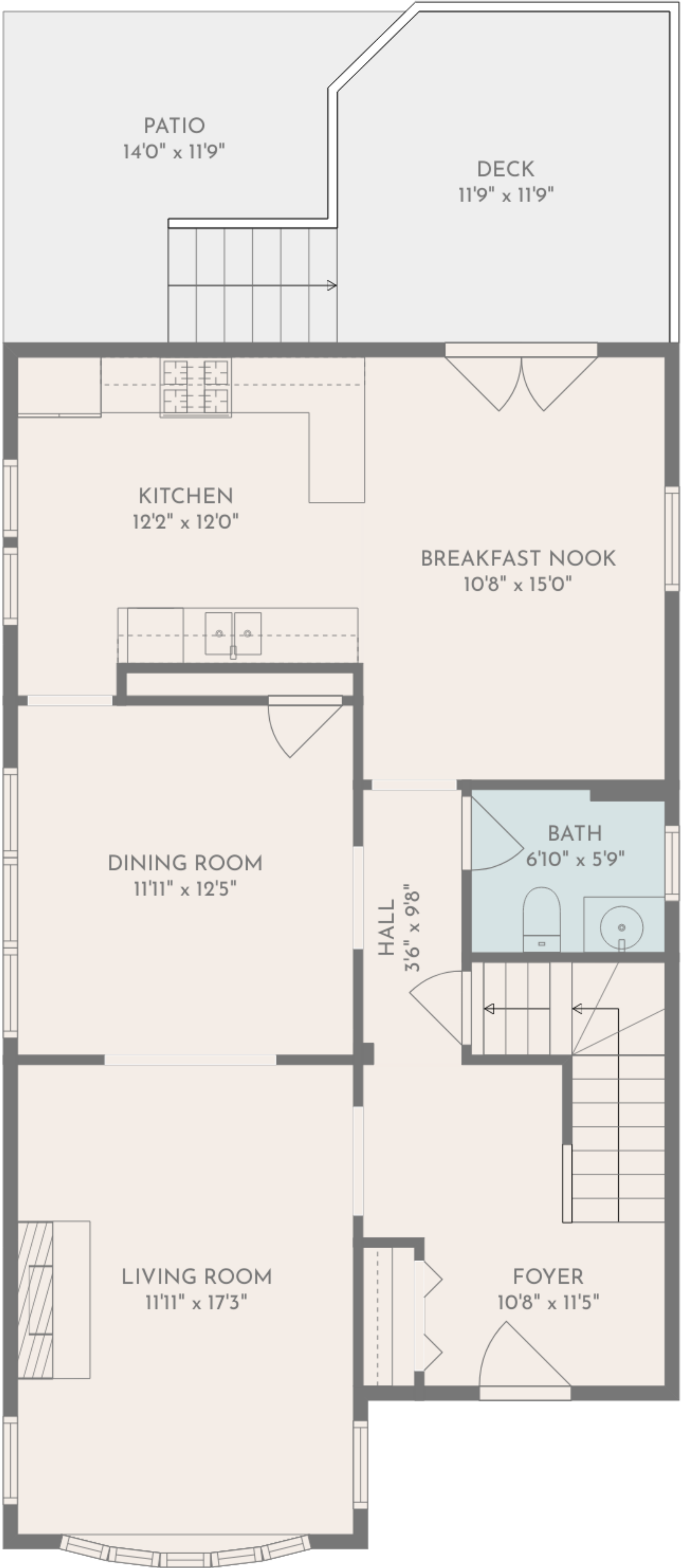
BELOW GROUND: 455 sq. ft, FLOOR 2: 901 sq. ft, FLOOR 3: 1104 sq. ft, FLOOR 4: 36 sq. ft, FLOOR 5: 433 sq. ft  
EXCLUDED AREAS: STORAGE: 57 sq. ft, BASEMENT: 443 sq. ft, DECK: 158 sq. ft,  
PATIO: 125 sq. ft, GARAGE: 552 sq. ft, WALLS: 303 sq. ft

FLOOR PLAN CREATED BY CUBICASA APP. MEASUREMENTS DEEMED HIGHLY RELIABLE BUT NOT GUARANTEED.

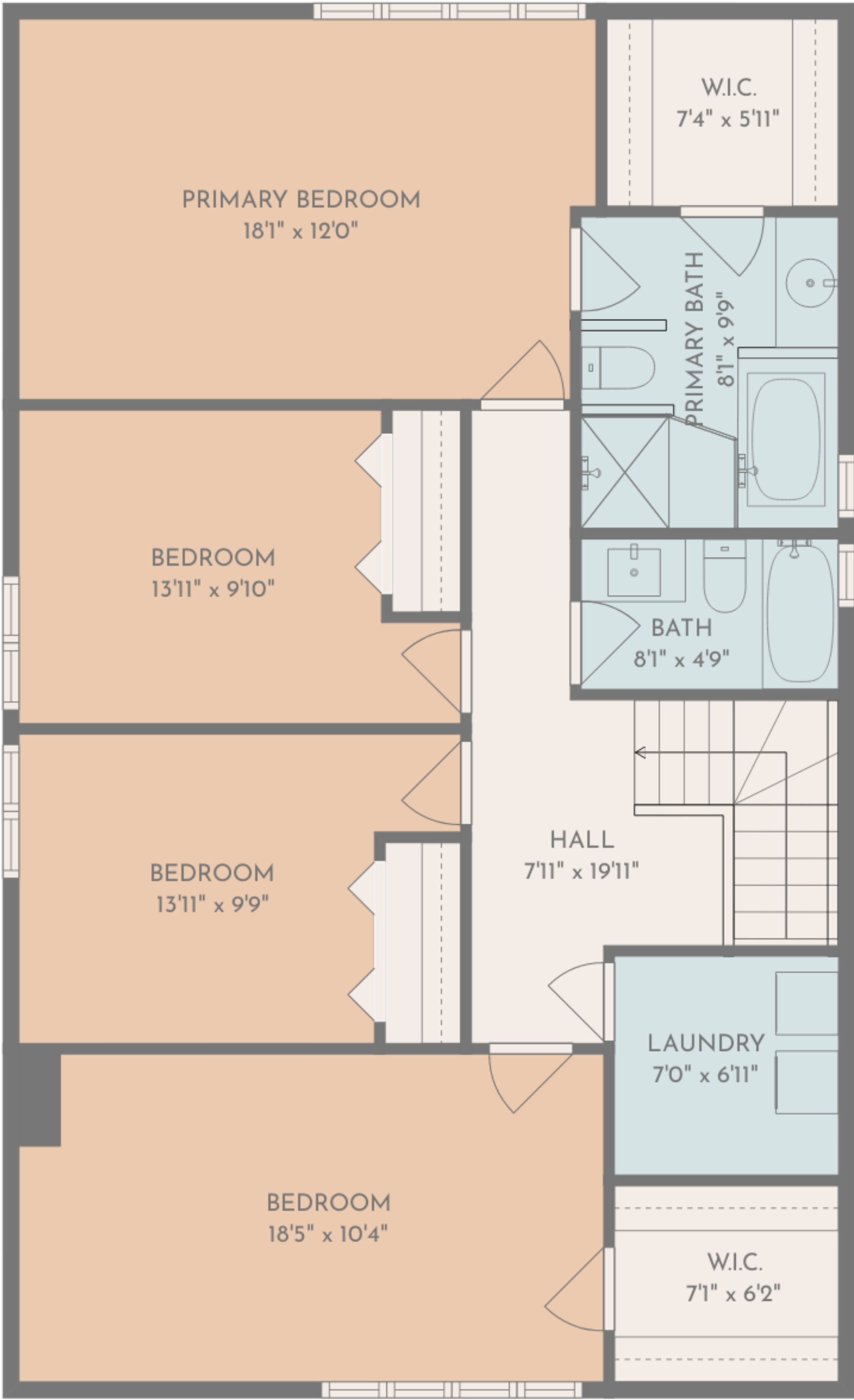




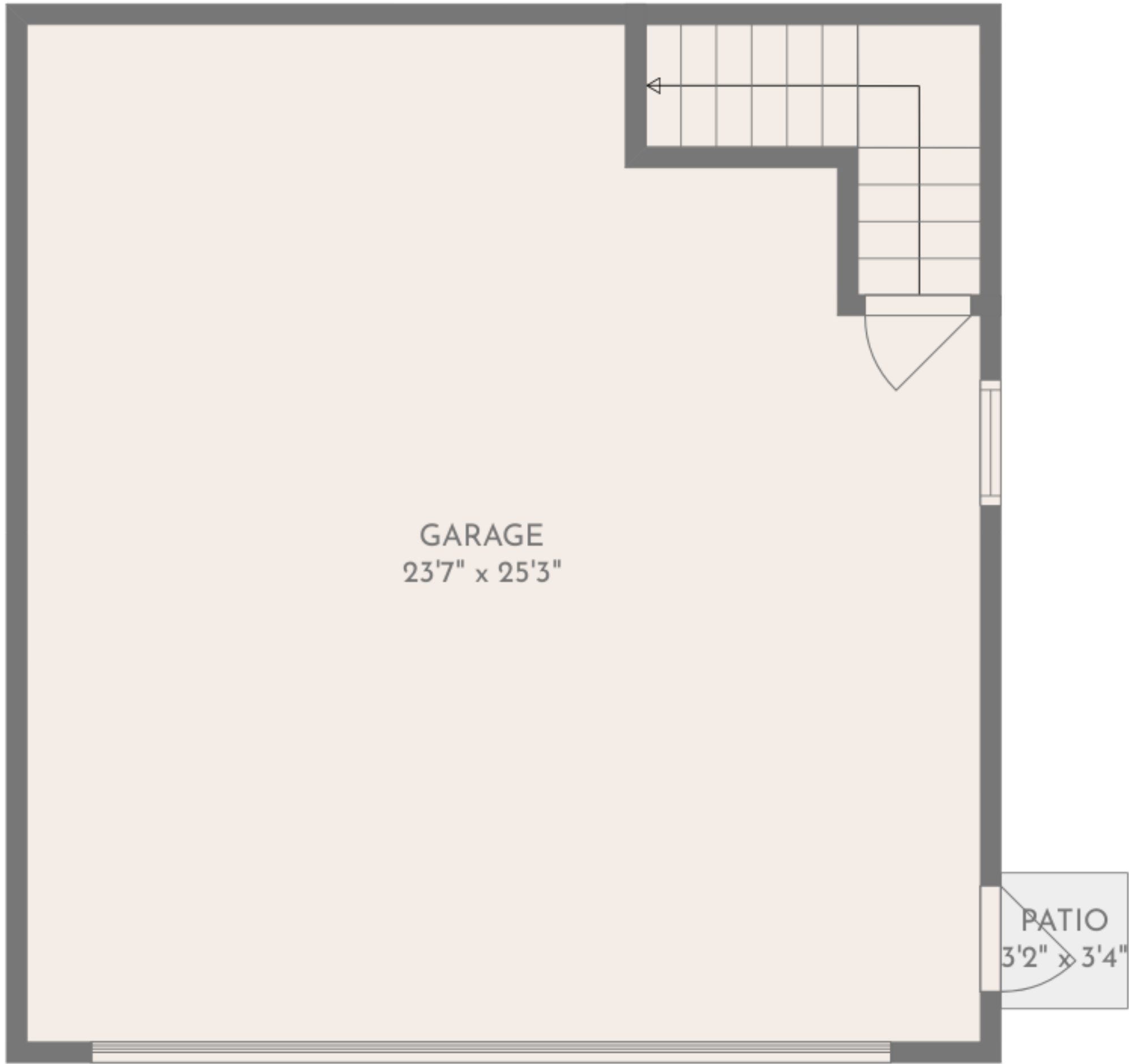
FLOOR 1



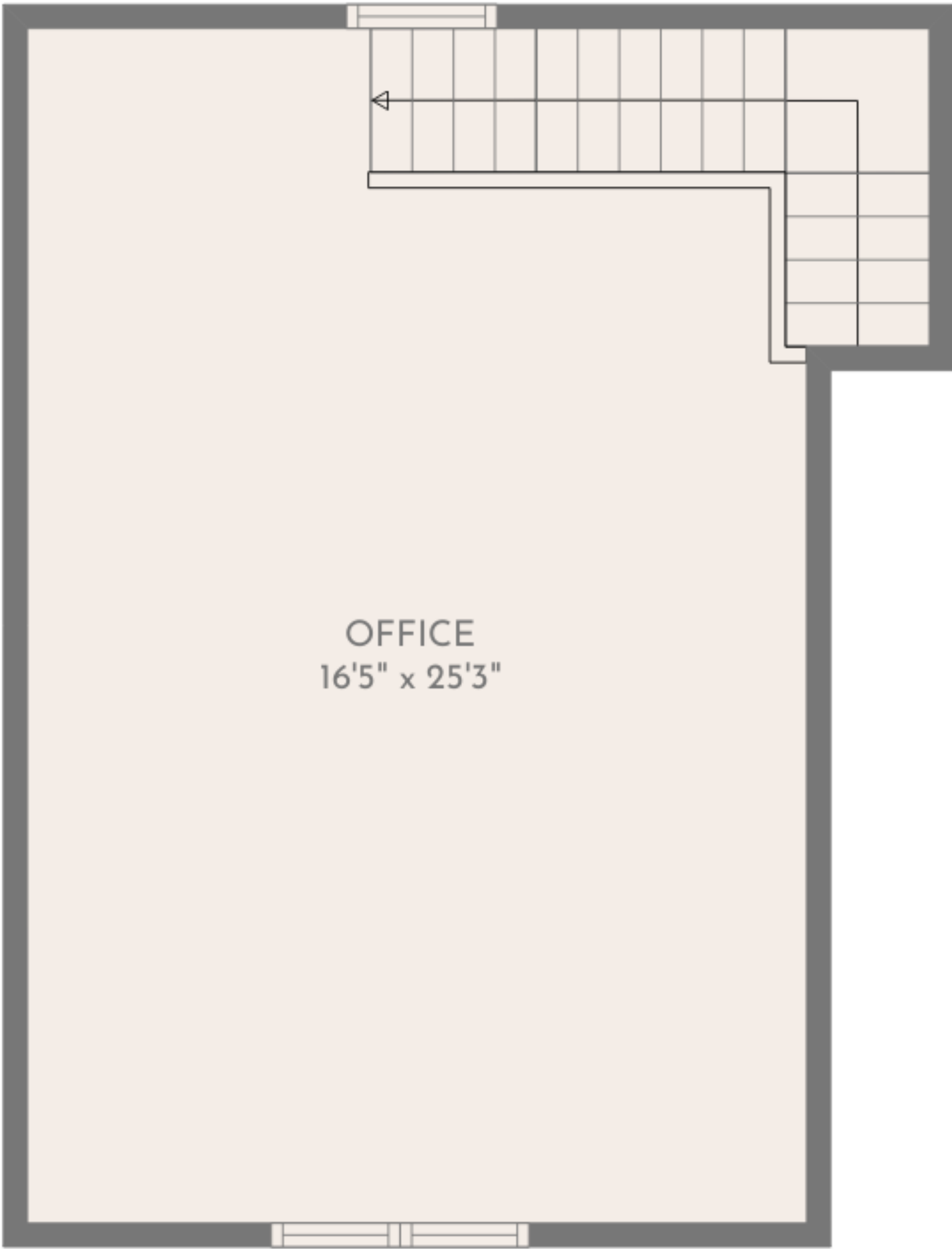
FLOOR 2



FLOOR 3



FLOOR 4



FLOOR 5

**TOTAL: 2929 sq. ft**  
BELOW GROUND: 455 sq. ft, FLOOR 2: 901 sq. ft, FLOOR 3: 1104 sq. ft, FLOOR 4: 36 sq. ft, FLOOR 5: 433 sq. ft  
EXCLUDED AREAS: STORAGE: 57 sq. ft, BASEMENT: 443 sq. ft, DECK: 158 sq. ft,  
PATIO: 125 sq. ft, GARAGE: 552 sq. ft, WALLS: 303 sq. ft