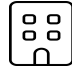




3632 Kenwick Trail, Kenwick Place, Cave Spring, Roanoke, Roanoke County, Virginia, United

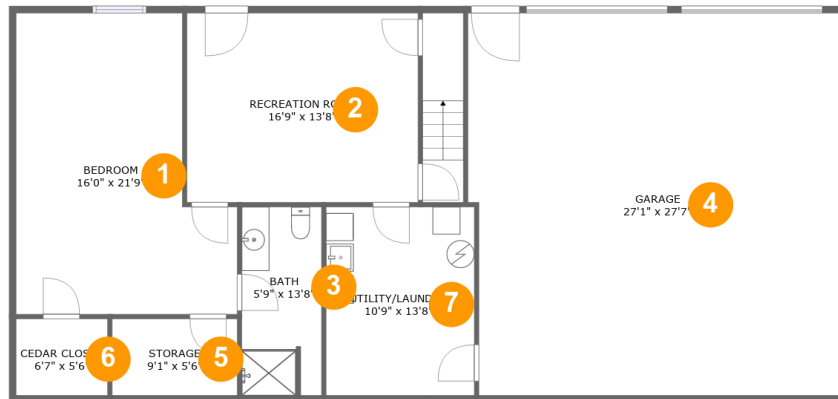


Property Summary

 **1** garages  **4** bedrooms  **3** bathrooms  **0** half baths

 **2** floors  **2,455** Gross Living Area sqft  **3,905** total sqft

3632 Kenwick Trail, Kenwick Place, Cave Spring, Roanoke, Roanoke County, Virginia, United



Room Dimensions

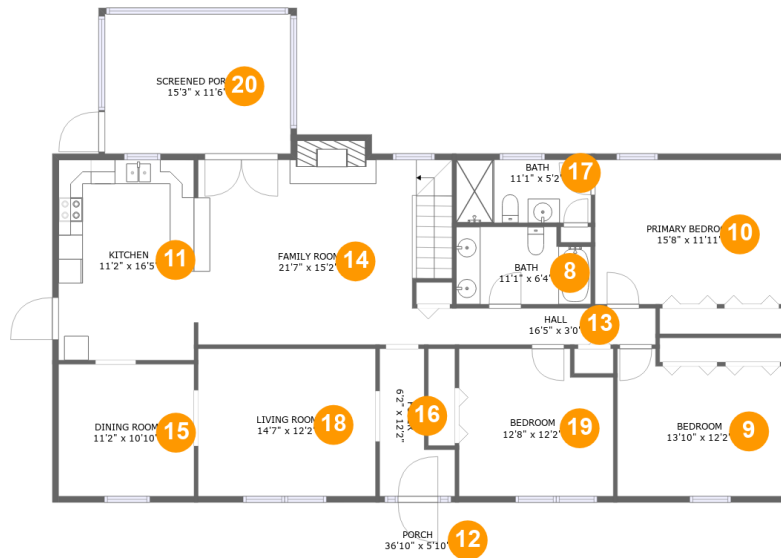
Floor 1

Total sqft: 1742

Living area: 707

#	Room name	Dimensions	Area (sqft)	Counted as Living Area
1	Bedroom	16'0" x 21'9"	293 sq. ft	Yes
2	Recreation Room	16'9" x 13'8"	229 sq. ft	Yes
3	Bath	5'9" x 13'8"	77 sq. ft	Yes
4	Garage	27'1" x 27'7"	737 sq. ft	No
5	Storage	9'1" x 5'6"	50 sq. ft	No
6	Cedar Closet	6'7" x 5'6"	37 sq. ft	No
7	UTILITY/LAUNDRY	10'9" x 13'8"	146 sq. ft	No

3632 Kenwick Trail, Kenwick Place, Cave Spring, Roanoke, Roanoke County, Virginia, United



Room Dimensions

Floor 2

Total sqft: 2163

Living area: 1748

#	Room name	Dimensions	Area (sqft)	Counted as Living Area
8	Bath	11'1" x 6'4"	66 sq. ft	Yes
9	Bedroom	13'10" x 12'2"	152 sq. ft	Yes
10	Primary Bedroom	15'8" x 11'11"	186 sq. ft	Yes
11	Kitchen	11'2" x 16'5"	184 sq. ft	Yes
12	Porch	36'10" x 5'10"	217 sq. ft	No
13	Hall	16'5" x 3'0"	49 sq. ft	Yes
14	Family Room	21'7" x 15'2"	323 sq. ft	Yes
15	Dining Room	11'2" x 10'10"	121 sq. ft	Yes
16	Foyer	6'2" x 12'2"	54 sq. ft	Yes
17	Bath	11'1" x 5'2"	57 sq. ft	Yes
18	Living Room	14'7" x 12'2"	177 sq. ft	Yes

Scan captured on Thu, 05 Sep 2024 19:07:37 GMT

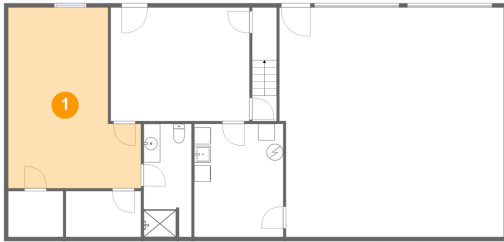
Information is calculated by CubiCasa technology; deemed highly reliable but not guaranteed.

**3632 Kenwick Trail, Kenwick Place, Cave Spring,
Roanoke, Roanoke County, Virginia, United**

#	Room name	Dimensions	Area (sqft)	Counted as Living Area
19	Bedroom	12'8" x 12'2"	146 sq. ft	Yes
20	Screened Porch	15'3" x 11'6"	175 sq. ft	No

3632 Kenwick Trail, Kenwick Place, Cave Spring, Roanoke, Roanoke County, Virginia, United

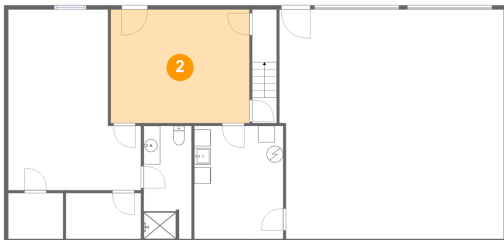
1 Floor 1 - Bedroom



Dimensions: 16'0" x 21'9"
Area: 293 sq. ft
Counted as Living Area:
Yes

Heated: Yes
Finished: Yes
Enclosed: Yes
Contiguous:
Yes
Permitted: Yes
Wet Space: No
Addition: No
Conversion: No

2 Floor 1 - Recreation Room

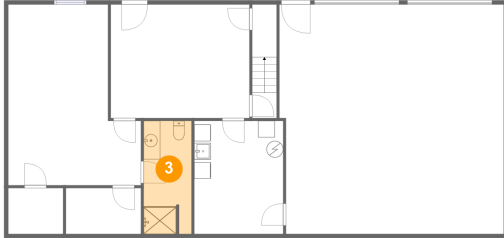


Dimensions: 16'9" x 13'8"
Area: 229 sq. ft
Counted as Living Area:
Yes

Heated: Yes
Finished: Yes
Enclosed: Yes
Contiguous:
Yes
Permitted: Yes
Wet Space: No
Addition: No
Conversion: No

3632 Kenwick Trail, Kenwick Place, Cave Spring, Roanoke, Roanoke County, Virginia, United

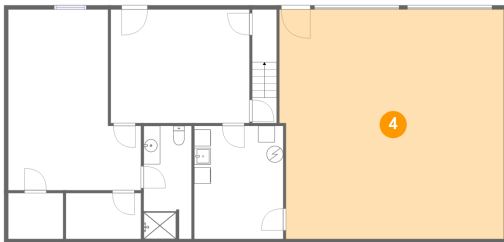
3 Floor 1 - Bath



Dimensions: 5'9" x 13'8"
Area: 77 sq. ft
Counted as Living Area:
Yes

Heated: Yes
Finished: Yes
Enclosed: Yes
Contiguous:
Yes
Permitted: Yes
Wet Space: Yes
Addition: No
Conversion: No

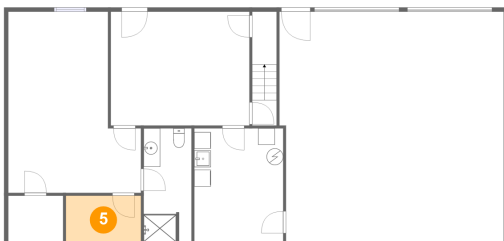
4 Floor 1 - Garage



Dimensions: 27'1" x 27'7"
Area: 737 sq. ft
Counted as Living Area: No

Heated: No
Finished: No
Enclosed: Yes
Contiguous: Yes
Permitted: Yes
Wet Space: No
Addition: No
Conversion: No

5 Floor 1 - Storage

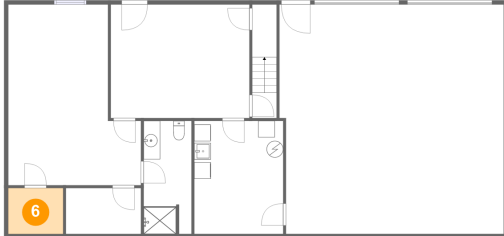


Dimensions: 9'1" x 5'6"
Area: 50 sq. ft
Counted as Living Area: No

Heated: No
Finished: No
Enclosed: No
Contiguous: Yes
Permitted: Yes
Wet Space: No
Addition: No
Conversion: No

3632 Kenwick Trail, Kenwick Place, Cave Spring, Roanoke, Roanoke County, Virginia, United

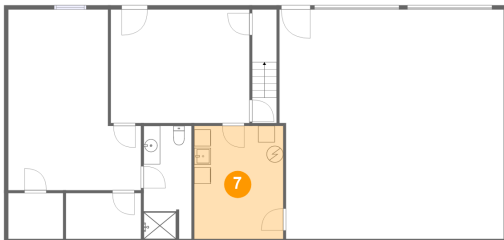
6 Floor 1 - Cedar Closet



Dimensions: 6'7" x 5'6"
Area: 37 sq. ft
Counted as Living Area: No

Heated: No
Finished: No
Enclosed: No
Contiguous: Yes
Permitted: Yes
Wet Space: No
Addition: No
Conversion: No

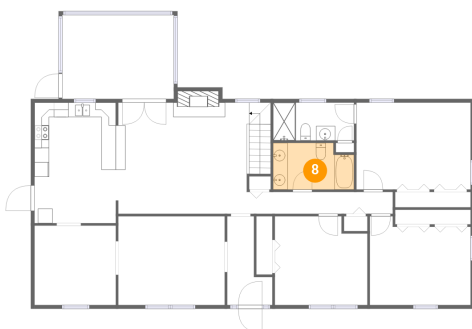
7 Floor 1 - UTILITY/LAUNDRY



Dimensions: 10'9" x 13'8"
Area: 146 sq. ft
Counted as Living Area: No

Heated: No
Finished: No
Enclosed: Yes
Contiguous: Yes
Permitted: Yes
Wet Space: No
Addition: No
Conversion: No

8 Floor 2 - Bath

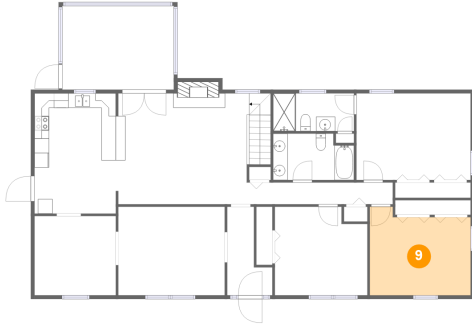


Dimensions: 11'1" x 6'4"
Area: 66 sq. ft
Counted as Living Area:
Yes

Heated: Yes
Finished: Yes
Enclosed: Yes
Contiguous:
Yes
Permitted: Yes
Wet Space: Yes
Addition: No
Conversion: No

3632 Kenwick Trail, Kenwick Place, Cave Spring, Roanoke, Roanoke County, Virginia, United

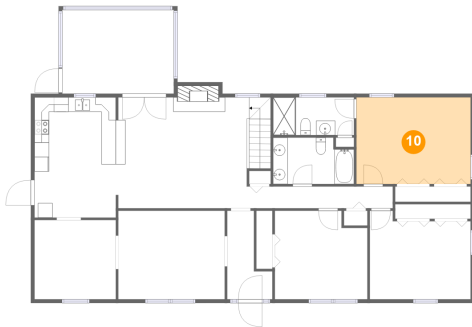
9 Floor 2 - Bedroom



Dimensions: 13'10" x 12'2"
Area: 152 sq. ft
Counted as Living Area:
Yes

Heated: Yes
Finished: Yes
Enclosed: Yes
Contiguous:
Yes
Permitted: Yes
Wet Space: No
Addition: No
Conversion: No

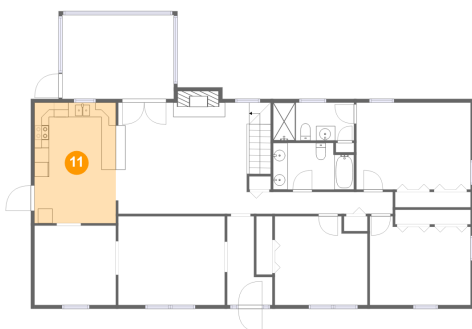
10 Floor 2 - Primary Bedroom



Dimensions: 15'8" x 11'11"
Area: 186 sq. ft
Counted as Living Area:
Yes

Heated: Yes
Finished: Yes
Enclosed: Yes
Contiguous:
Yes
Permitted: Yes
Wet Space: No
Addition: No
Conversion: No

11 Floor 2 - Kitchen

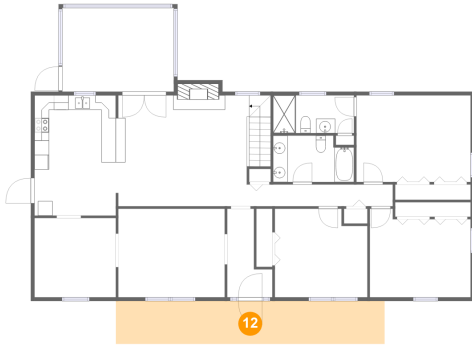


Dimensions: 11'2" x 16'5"
Area: 184 sq. ft
Counted as Living Area:
Yes

Heated: Yes
Finished: Yes
Enclosed: Yes
Contiguous:
Yes
Permitted: Yes
Wet Space: No
Addition: No
Conversion: No

3632 Kenwick Trail, Kenwick Place, Cave Spring, Roanoke, Roanoke County, Virginia, United

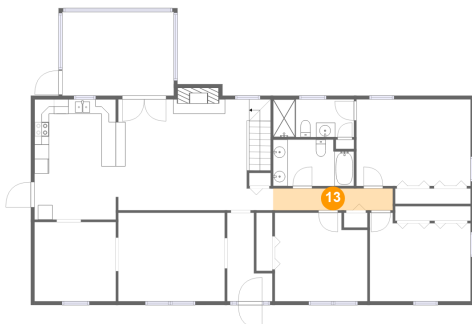
12 Floor 2 - Porch



Dimensions: 36'10" x 5'10"
Area: 217 sq. ft
Counted as Living Area: No

Heated: No
Finished: Yes
Enclosed: No
Contiguous: Yes
Permitted: Yes
Wet Space: No
Addition: No
Conversion: No

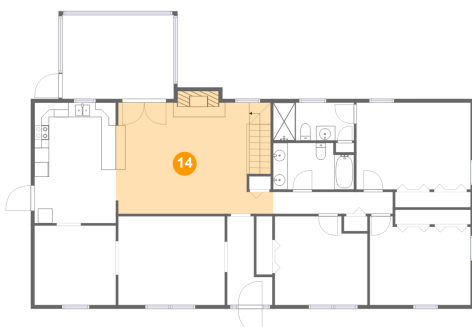
13 Floor 2 - Hall



Dimensions: 16'5" x 3'0"
Area: 49 sq. ft
Counted as Living Area:
Yes

Heated: Yes
Finished: Yes
Enclosed: Yes
Contiguous:
Yes
Permitted: Yes
Wet Space: No
Addition: No
Conversion: No

14 Floor 2 - Family Room

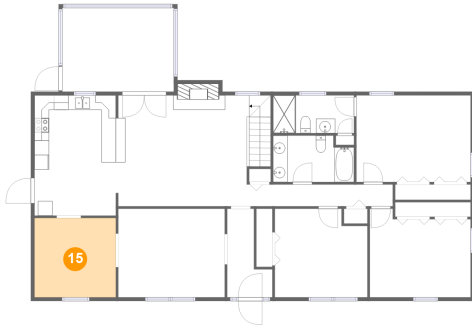


Dimensions: 21'7" x 15'2"
Area: 323 sq. ft
Counted as Living Area:
Yes

Heated: Yes
Finished: Yes
Enclosed: Yes
Contiguous:
Yes
Permitted: Yes
Wet Space: No
Addition: No
Conversion: No

3632 Kenwick Trail, Kenwick Place, Cave Spring, Roanoke, Roanoke County, Virginia, United

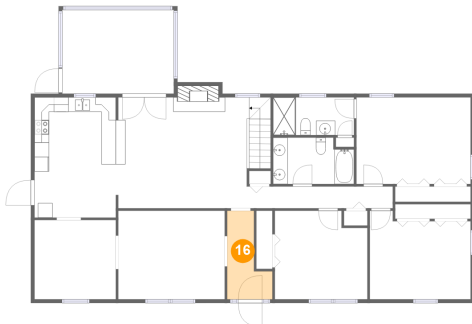
15 Floor 2 - Dining Room



Dimensions: 11'2" x 10'10"
Area: 121 sq. ft
Counted as Living Area:
Yes

Heated: Yes
Finished: Yes
Enclosed: Yes
Contiguous:
Yes
Permitted: Yes
Wet Space: No
Addition: No
Conversion: No

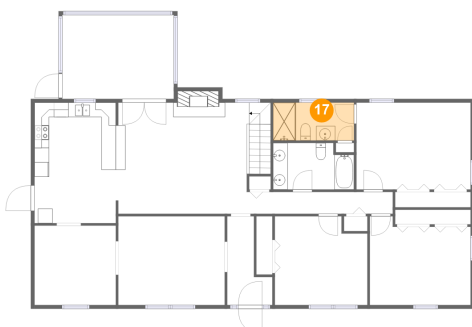
16 Floor 2 - Foyer



Dimensions: 6'2" x 12'2"
Area: 54 sq. ft
Counted as Living Area:
Yes

Heated: Yes
Finished: Yes
Enclosed: Yes
Contiguous:
Yes
Permitted: Yes
Wet Space: No
Addition: No
Conversion: No

17 Floor 2 - Bath

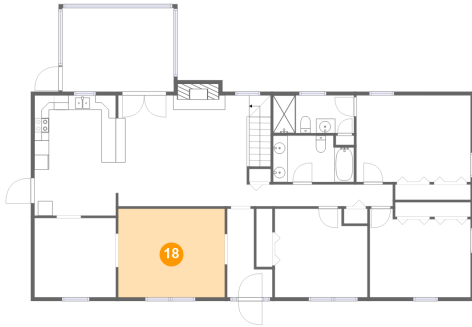


Dimensions: 11'1" x 5'2"
Area: 57 sq. ft
Counted as Living Area:
Yes

Heated: Yes
Finished: Yes
Enclosed: Yes
Contiguous:
Yes
Permitted: Yes
Wet Space: Yes
Addition: No
Conversion: No

3632 Kenwick Trail, Kenwick Place, Cave Spring, Roanoke, Roanoke County, Virginia, United

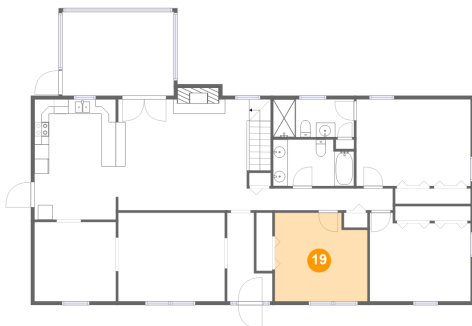
18 Floor 2 - Living Room



Dimensions: 14'7" x 12'2"
Area: 177 sq. ft
Counted as Living Area:
Yes

Heated: Yes
Finished: Yes
Enclosed: Yes
Contiguous:
Yes
Permitted: Yes
Wet Space: No
Addition: No
Conversion: No

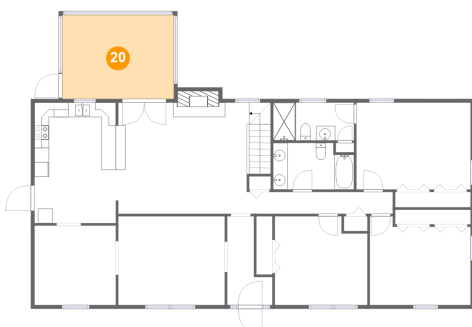
19 Floor 2 - Bedroom



Dimensions: 12'8" x 12'2"
Area: 146 sq. ft
Counted as Living Area:
Yes

Heated: Yes
Finished: Yes
Enclosed: Yes
Contiguous:
Yes
Permitted: Yes
Wet Space: No
Addition: No
Conversion: No

20 Floor 2 - Screened Porch



Dimensions: 15'3" x 11'6"
Area: 175 sq. ft
Counted as Living Area: No

Heated: No
Finished: Yes
Enclosed: No
Contiguous: Yes
Permitted: Yes
Wet Space: No
Addition: No
Conversion: No