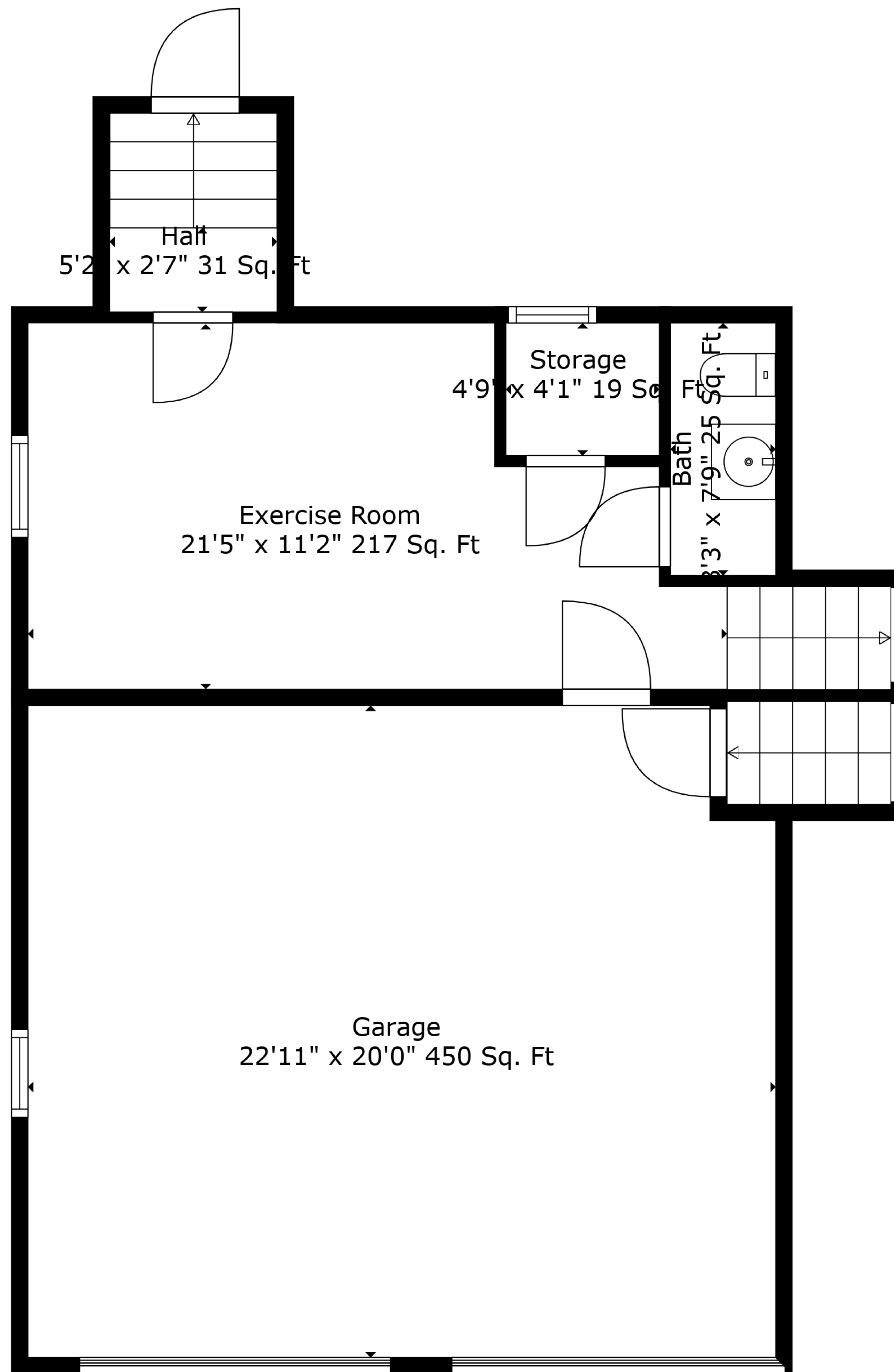


Basement
27'9" x 25'2" 719 Sq. Ft

TOTAL: 1761 sq. ft
BELOW GROUND: 0 sq. ft, FLOOR 2: 301 sq. ft, FLOOR 3: 724 sq. ft, FLOOR 4: 736 sq. ft
EXCLUDED AREAS: BASEMENT: 719 sq. ft, GARAGE: 450 sq. ft, STORAGE: 19 sq. ft,
FIREPLACE: 11 sq. ft

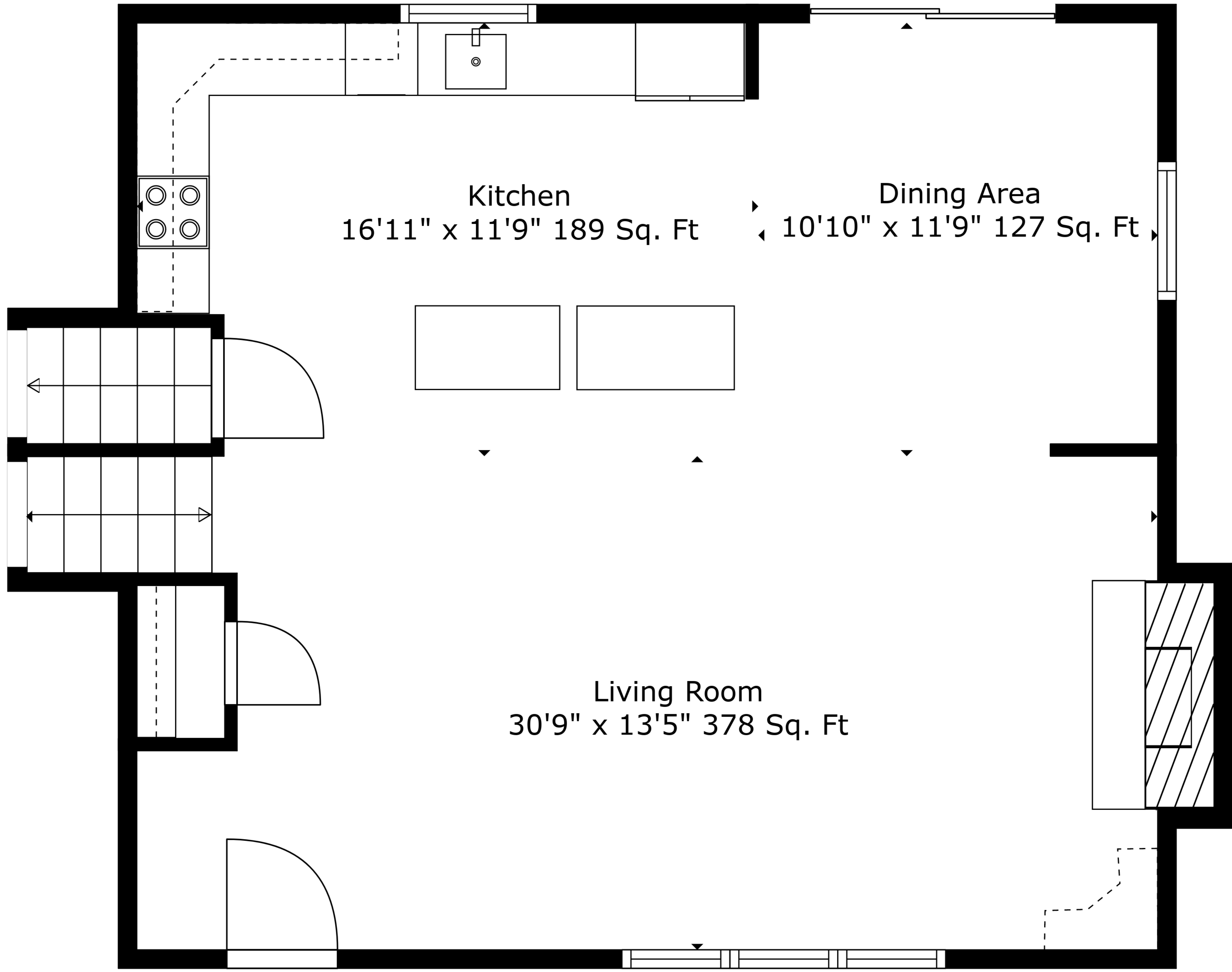
Measurements Are Deemed Highly Reliable But Not Guaranteed.



TOTAL: 1761 sq. ft

BELOW GROUND: 0 sq. ft, FLOOR 2: 301 sq. ft, FLOOR 3: 724 sq. ft, FLOOR 4: 736 sq. ft
 EXCLUDED AREAS: BASEMENT: 719 sq. ft, GARAGE: 450 sq. ft, STORAGE: 19 sq. ft,
 FIREPLACE: 11 sq. ft

Measurements Are Deemed Highly Reliable But Not Guaranteed.



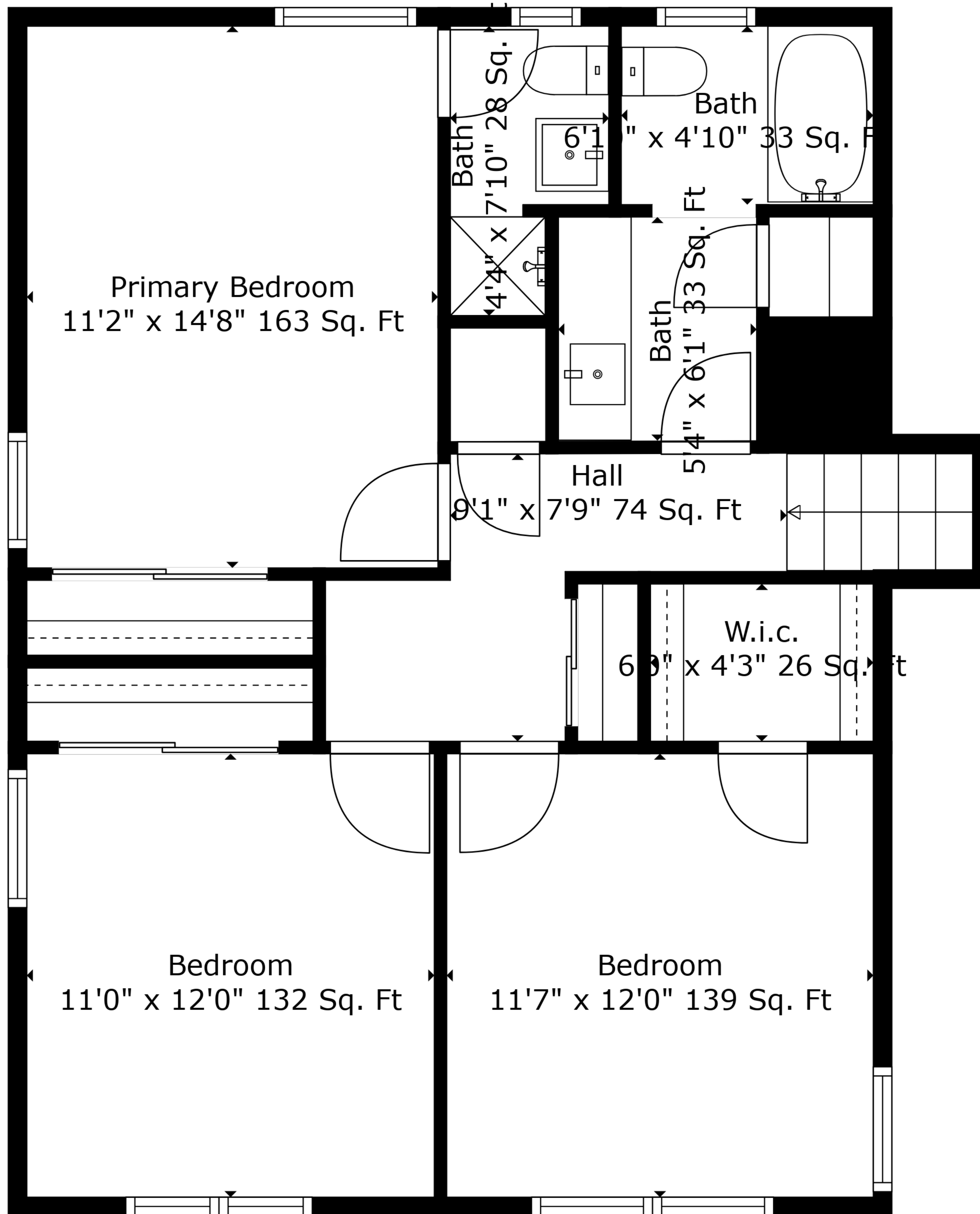
Kitchen
16'11" x 11'9" 189 Sq. Ft

Dining Area
10'10" x 11'9" 127 Sq. Ft

Living Room
30'9" x 13'5" 378 Sq. Ft

TOTAL: 1761 sq. ft
BELOW GROUND: 0 sq. ft, FLOOR 2: 301 sq. ft, FLOOR 3: 724 sq. ft, FLOOR 4: 736 sq. ft
EXCLUDED AREAS: BASEMENT: 719 sq. ft, GARAGE: 450 sq. ft, STORAGE: 19 sq. ft,
FIREPLACE: 11 sq. ft

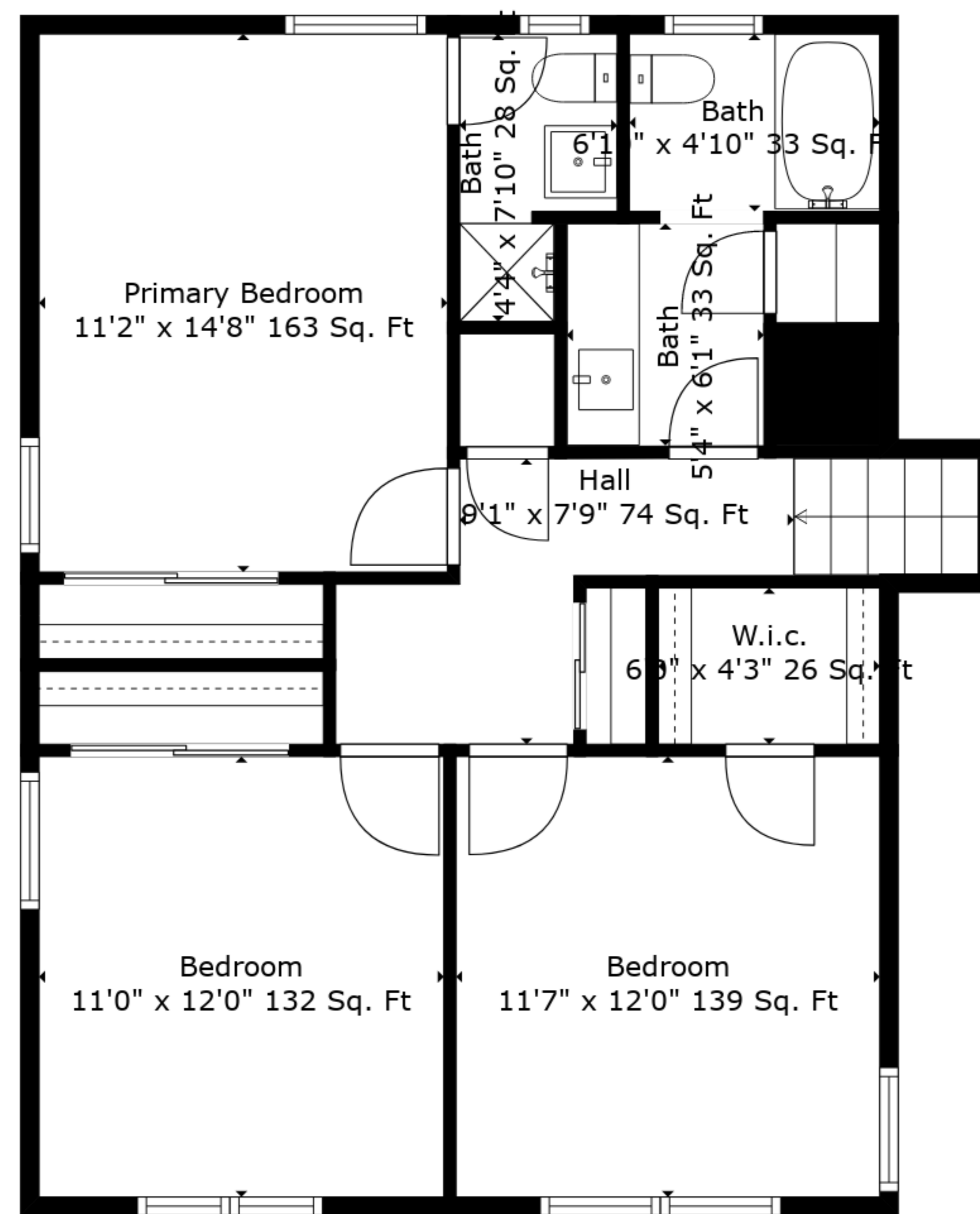
Measurements Are Deemed Highly Reliable But Not Guaranteed.



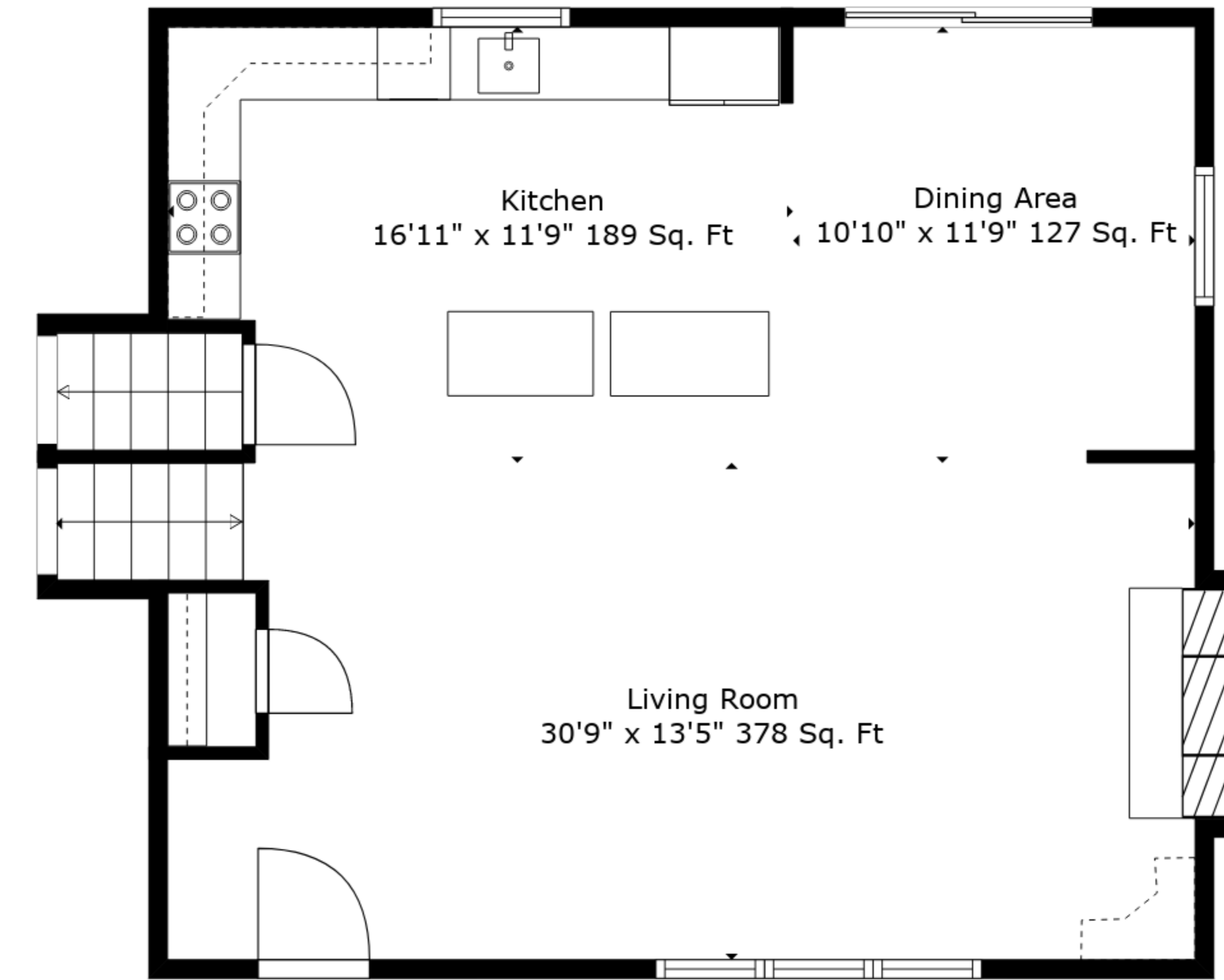
TOTAL: 1761 sq. ft

BELOW GROUND: 0 sq. ft, FLOOR 2: 301 sq. ft, FLOOR 3: 724 sq. ft, FLOOR 4: 736 sq. ft
 EXCLUDED AREAS: BASEMENT: 719 sq. ft, GARAGE: 450 sq. ft, STORAGE: 19 sq. ft,
 FIREPLACE: 11 sq. ft

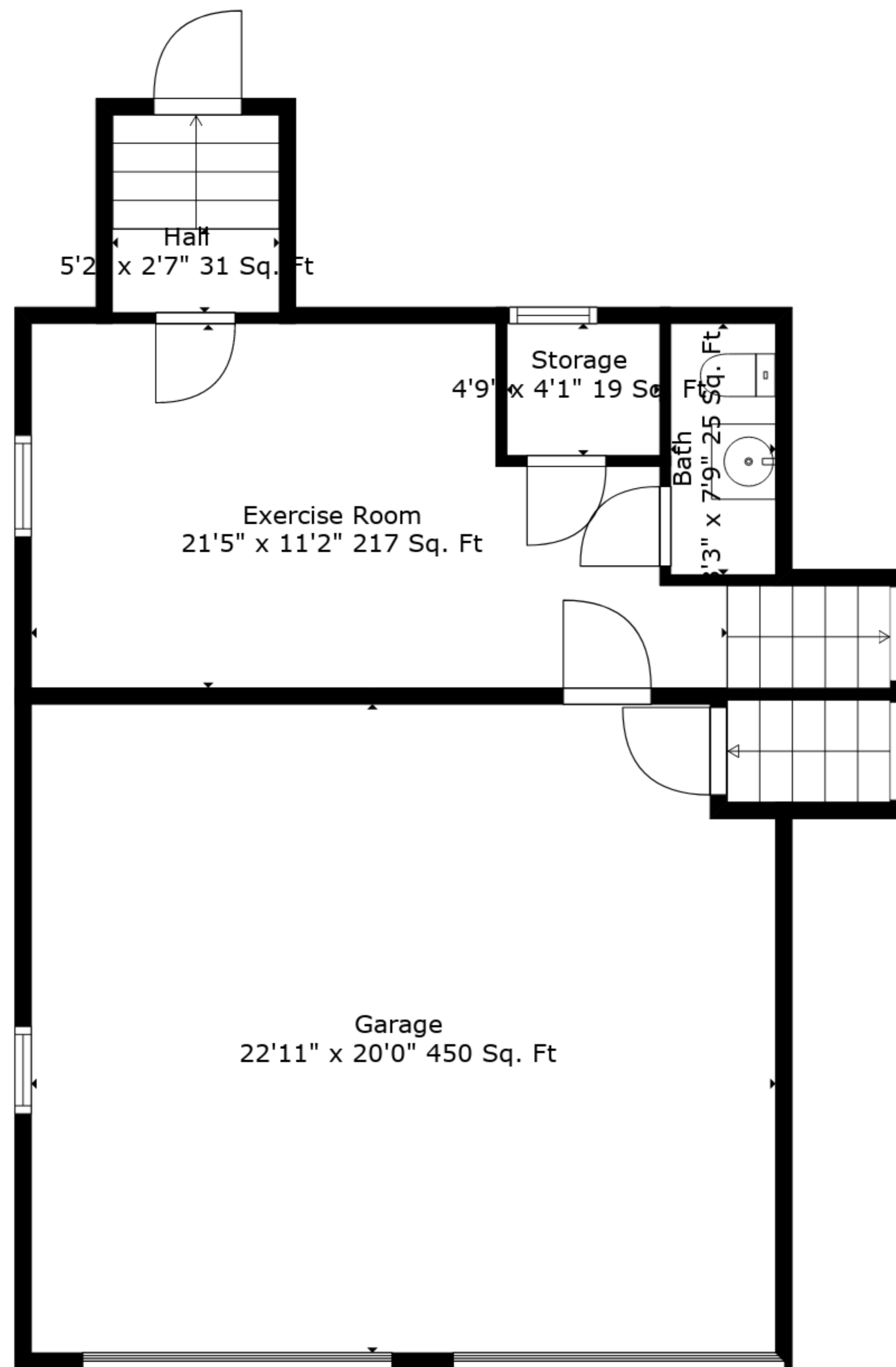
Measurements Are Deemed Highly Reliable But Not Guaranteed.



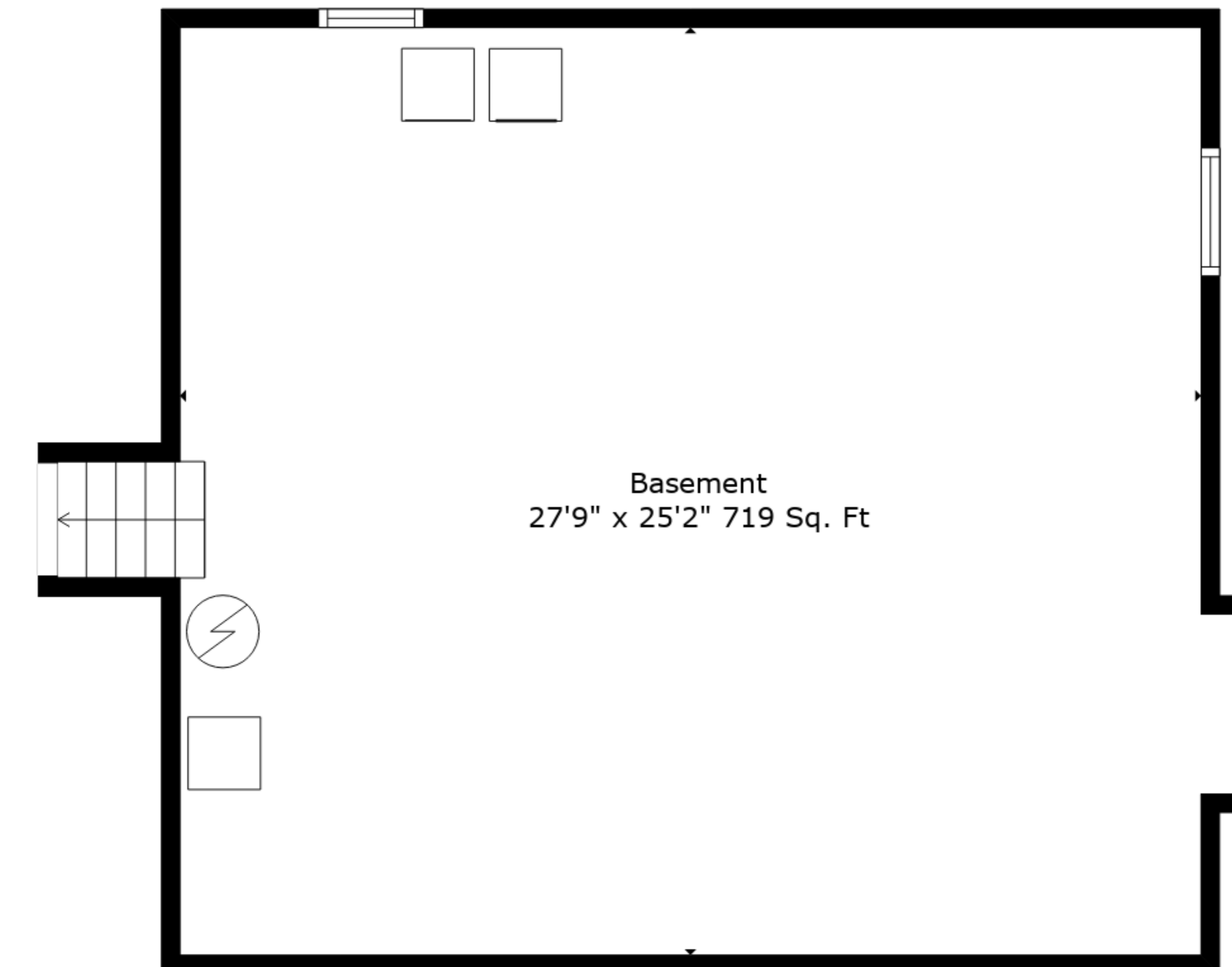
Floor 4



Floor 3



Floor 2



Floor 1

TOTAL: 1761 sq. ft
 BELOW GROUND: 0 sq. ft, FLOOR 2: 301 sq. ft, FLOOR 3: 724 sq. ft, FLOOR 4: 736 sq. ft
 EXCLUDED AREAS: BASEMENT: 719 sq. ft, GARAGE: 450 sq. ft, STORAGE: 19 sq. ft,
 FIREPLACE: 11 sq. ft

Measurements Are Deemed Highly Reliable But Not Guaranteed.