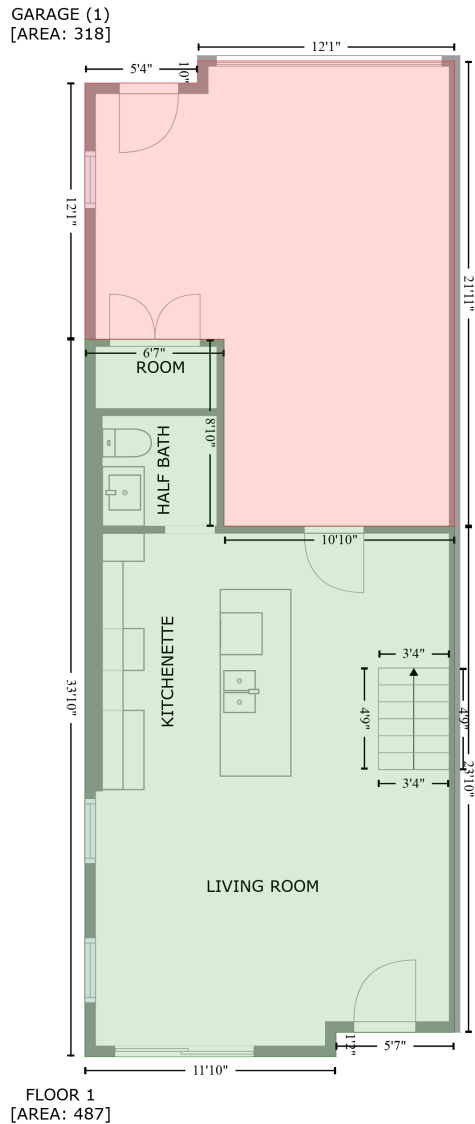


2923 Forest Avenue, Beacon Hills, Kansas City, Jackson County, Missouri, United States, 64109

Gross Living Area: 1811 sq. ft

Level 1

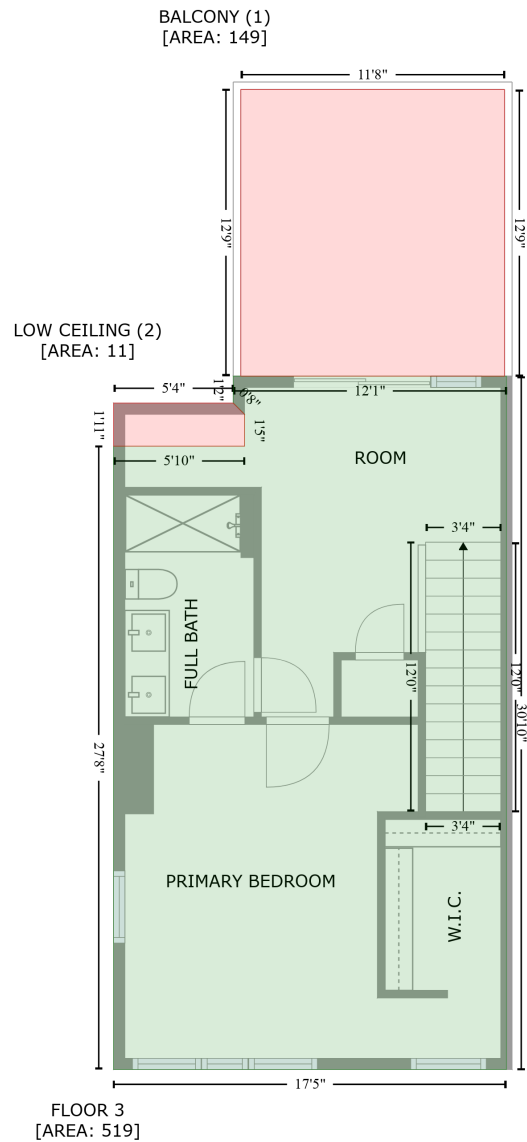


Space	Area (sq. ft)	Calculation
FLOOR 1 (Living area)	487	Coordinate Polygon Area Algorithm using inches $-((174.3 + 174.3) * (160 - 265.8) + (174.3 + 304.6) * (265.8 - 265.8) + (304.6 + 304.6) * (265.8 - 552) + (304.6 + 237.6) * (552 - 552) + (237.6 + 237.6) * (552 - 565.8) + (237.6 + 95.7) * (565.8 - 565.8) + (95.7 + 95.7) * (565.8 - 160) + (95.7 + 174.3) * (160 - 160)) * 0.5 * 0.00694$
GARAGE (Non-living area)	318	$-((304.6 + 304.6) * (2.6 - 265.8) + (304.6 + 174.3) * (265.8 - 265.8) + (174.3 + 174.3) * (265.8 - 160) + (174.3 + 95.7) * (160 - 160) + (95.7 + 95.7) * (160 - 15.1) + (95.7 + 159.3) * (15.1 - 15.1) + (159.3 + 159.3) * (15.1 - 2.6) + (159.3 + 304.6) * (2.6 - 2.6)) * 0.5 * 0.00694$

2923 Forest Avenue, Beacon Hills, Kansas City, Jackson County, Missouri, United States, 64109

Gross Living Area: 1811 sq. ft

Level 3



Space	Area (sq. ft)	Calculation
FLOOR 3 (Living area)	519	Coordinate Polygon Area Algorithm using inches $-((159.3 + 304.6) * (156.4 - 156.4) + (304.6 + 304.6) * (156.4 - 526) + (304.6 + 95.7) * (526 - 526) + (95.7 + 95.7) * (526 - 193.7) + (95.7 + 165.3) * (193.7 - 193.7) + (165.3 + 165.3) * (193.7 - 176.7) + (165.3 + 159.3) * (176.7 - 170.7) + (159.3 + 159.3) * (170.7 - 156.4)) * 0.5 * 0.00694$
BALCONY (Non-living area)	149	$-((303.6 + 303.6) * (3.6 - 156.4) + (303.6 + 163.3) * (156.4 - 156.4) + (163.3 + 163.3) * (156.4 - 3.6) + (163.3 + 303.6) * (3.6 - 3.6)) * 0.5 * 0.00694$
LOW CEILING (Non-living area)	11	$-((159.3 + 165.3) * (170.7 - 176.7) + (165.3 + 165.3) * (176.7 - 193.7) + (165.3 + 95.7) * (193.7 - 193.7) + (95.7 + 95.7) * (193.7 - 170.7) + (95.7 + 159.3) * (170.7 - 170.7)) * 0.5 * 0.00694$