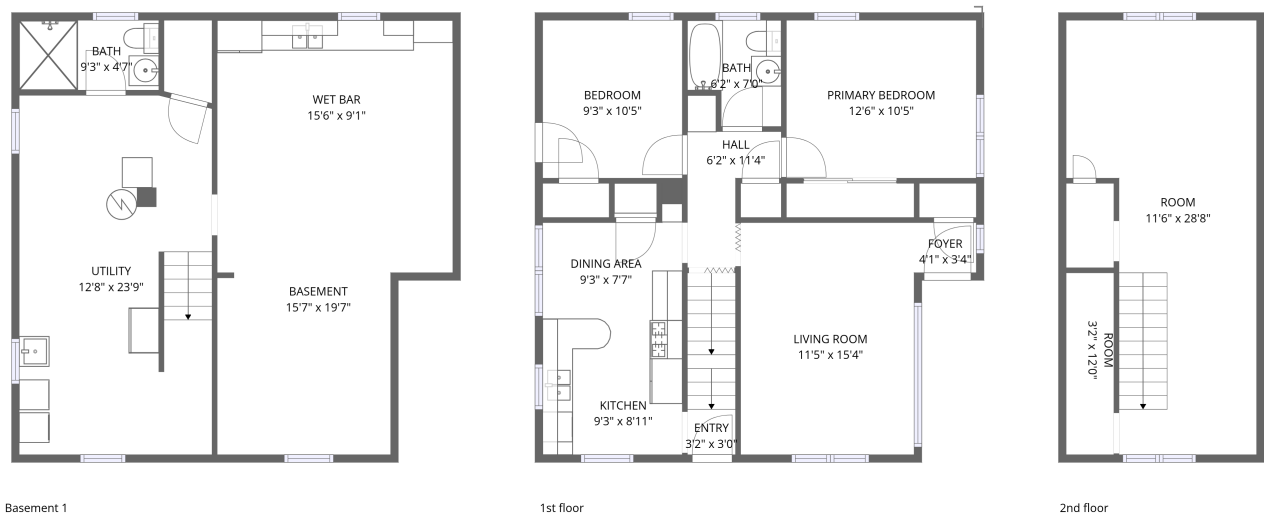


Home data report

1020 Perkins St,Belle Fourche,SD,US



Total Area: 1102 sq. ft

Below Ground: 0 sq. ft, 1st Floor: 771 sq. ft, 2nd Floor: 331 sq. ft

Excluded: Utility 312 sq. ft, Undefined 20 sq. ft, Bath 43 sq. ft, Basement 255 sq. ft, Wet bar 142 sq. ft, Low ceiling 30 sq. ft, Walls: 156 sq. ft

Property summary



3
Floors



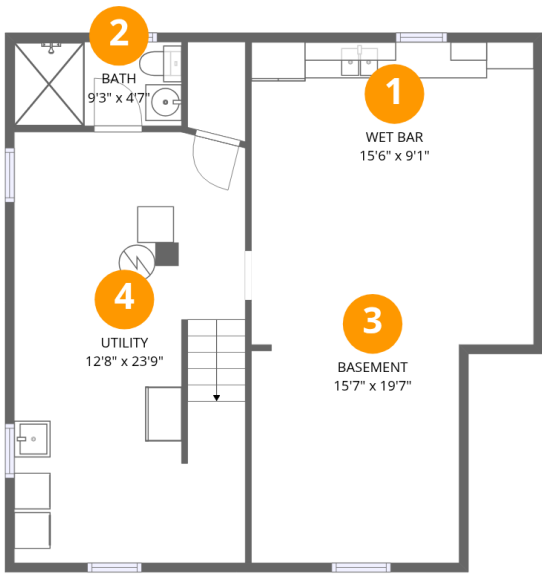
2
Bedrooms



2
Bathrooms

Home data report

1020 Perkins St,Belle Fourche,SD,US



Room dimensions

Floor 1 Below grade Total:0sqft Excluded: 772sqft

#		Dimensions	sqft	Counted as living area
1	Wet Bar	15'6" x 9'1"	142 sq. ft	No
2	Bath	9'3" x 4'7"	43 sq. ft	No
3	Basement	15'7" x 19'7"	254 sq. ft	No
4	Utility	12'8" x 23'9"	300 sq. ft	No

Home data report

1020 Perkins St,Belle Fourche,SD,US



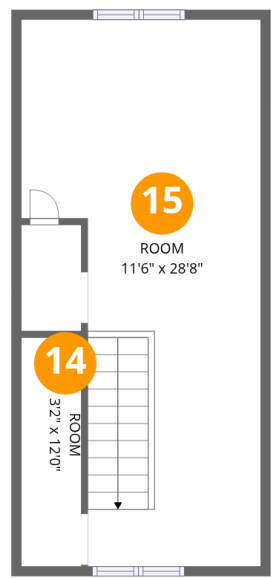
Room dimensions

Floor 2 Total:771sqft Excluded: 0sqft

#		Dimensions	sqft	Counted as living area
5	Primary Bedroom	12'6" x 10'5"	131 sq. ft	Yes
6	Kitchen	9'3" x 8'11"	82 sq. ft	Yes
7	Entry	3'2" x 3'0"	38 sq. ft	Yes
8	Bedroom	9'3" x 10'5"	96 sq. ft	Yes
9	Dining Area	9'3" x 7'7"	62 sq. ft	Yes
10	Bath	6'2" x 7'0"	38 sq. ft	Yes
11	Living Room	11'5" x 15'4"	175 sq. ft	Yes
12	Foyer	4'1" x 3'4"	14 sq. ft	Yes
13	Hall	6'2" x 11'4"	42 sq. ft	Yes

Home data report

1020 Perkins St,Belle Fourche,SD,US

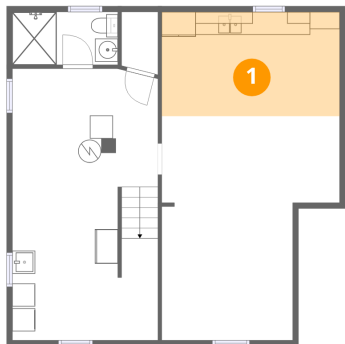


Room dimensions

Floor 3 Total:331sqft Excluded: 30sqft

#		Dimensions	sqft	Counted as living area
14	Room	3'2" x 12'0"	32 sq. ft	Yes
15	Room	11'6" x 28'8"	276 sq. ft	Yes

1 Floor 1 - Wet Bar



Dimensions: 15'6" x 9'1"
Area: 142 sq. ft
Counted as living area: No

Heated: Yes
Finished: No
Enclosed: Yes
Contiguous: Yes
Permitted: Yes
Wet space: No
Addition: No
Conversion: No

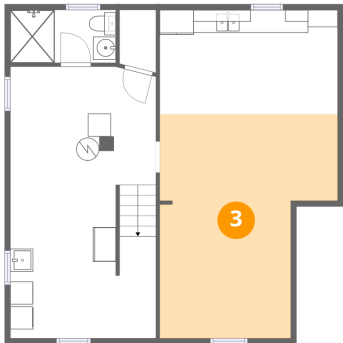
2 Floor 1 - Bath



Dimensions: 9'3" x 4'7"
Area: 43 sq. ft
Counted as living area: No

Heated: Yes
Finished: No
Enclosed: Yes
Contiguous: Yes
Permitted: Yes
Wet space: Yes
Addition: No
Conversion: No

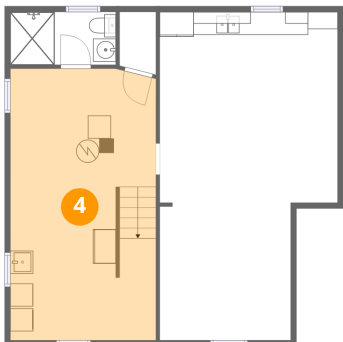
3 Floor 1 - Basement



Dimensions: 15'7" x 19'7"
Area: 254 sq. ft
Counted as living area: No

Heated: Yes
Finished: No
Enclosed: Yes
Contiguous: Yes
Permitted: Yes
Wet space: No
Addition: No
Conversion: No

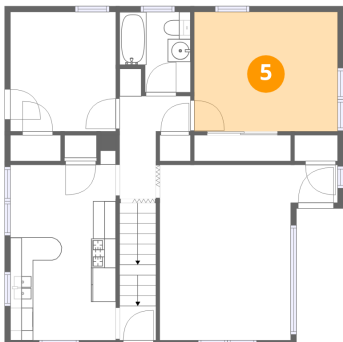
4 Floor 1 - Utility



Dimensions: 12'8" x 23'9"
Area: 300 sq. ft
Counted as living area: No

Heated: Yes
Finished: No
Enclosed: Yes
Contiguous: Yes
Permitted: Yes
Wet space: No
Addition: No
Conversion: No

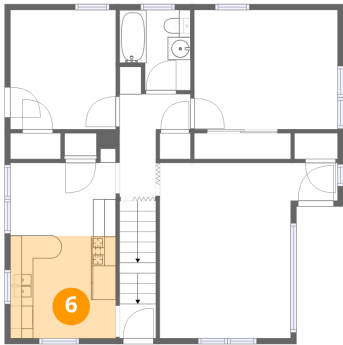
5 Floor 2 - Primary Bedroom



Dimensions: 12'6" x 10'5"
Area: 131 sq. ft
Counted as living area: Yes

Heated: Yes
Finished: Yes
Enclosed: Yes
Contiguous: Yes
Permitted: Yes
Wet space: No
Addition: No
Conversion: No

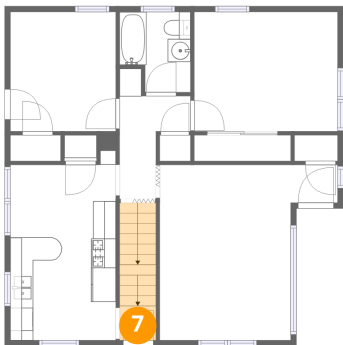
6 Floor 2 - Kitchen



Dimensions: 9'3" x 8'11"
Area: 82 sq. ft
Counted as living area: Yes

Heated: Yes
Finished: Yes
Enclosed: Yes
Contiguous: Yes
Permitted: Yes
Wet space: No
Addition: No
Conversion: No

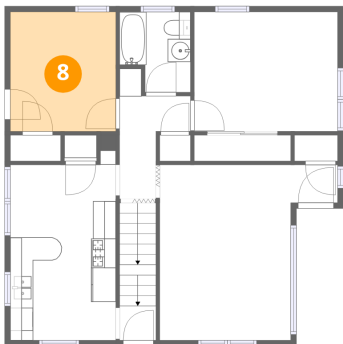
7 Floor 2 - Entry



Dimensions: 3'2" x 3'0"
Area: 38 sq. ft
Counted as living area: Yes

Heated: Yes
Finished: Yes
Enclosed: Yes
Contiguous: Yes
Permitted: Yes
Wet space: No
Addition: No
Conversion: No

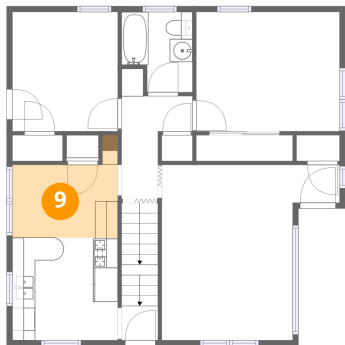
8 Floor 2 - Bedroom



Dimensions: 9'3" x 10'5"
Area: 96 sq. ft
Counted as living area: Yes

Heated: Yes
Finished: Yes
Enclosed: Yes
Contiguous: Yes
Permitted: Yes
Wet space: No
Addition: No
Conversion: No

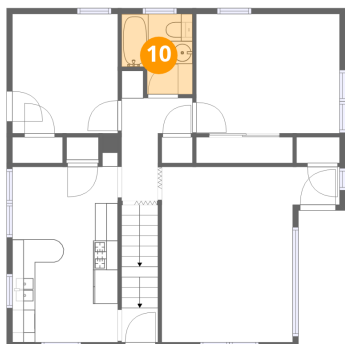
9 Floor 2 - Dining Area



Dimensions: 9'3" x 7'7"
Area: 62 sq. ft
Counted as living area: Yes

Heated: Yes
Finished: Yes
Enclosed: Yes
Contiguous: Yes
Permitted: Yes
Wet space: No
Addition: No
Conversion: No

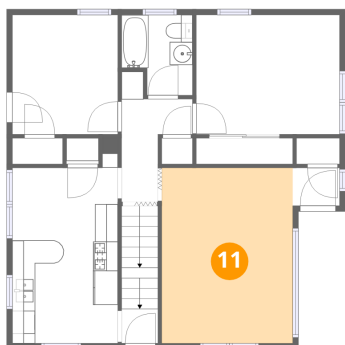
10 Floor 2 - Bath



Dimensions: 6'2" x 7'0"
Area: 38 sq. ft
Counted as living area: Yes

Heated: Yes
Finished: Yes
Enclosed: Yes
Contiguous: Yes
Permitted: Yes
Wet space: Yes
Addition: No
Conversion: No

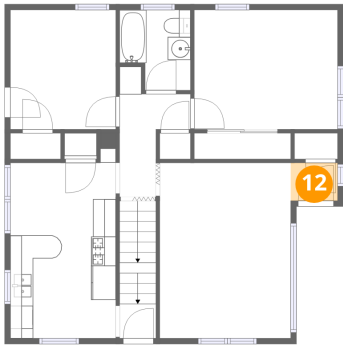
11 Floor 2 - Living Room



Dimensions: 11'5" x 15'4"
Area: 175 sq. ft
Counted as living area: Yes

Heated: Yes
Finished: Yes
Enclosed: Yes
Contiguous: Yes
Permitted: Yes
Wet space: No
Addition: No
Conversion: No

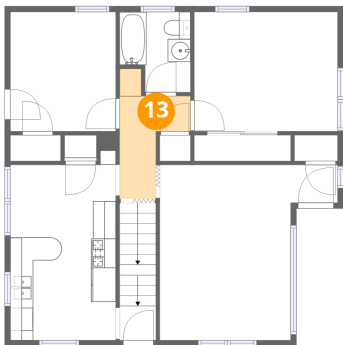
12 Floor 2 - Foyer



Dimensions: 4'1" x 3'4"
Area: 14 sq. ft
Counted as living area: Yes

Heated: Yes
Finished: Yes
Enclosed: Yes
Contiguous: Yes
Permitted: Yes
Wet space: No
Addition: No
Conversion: No

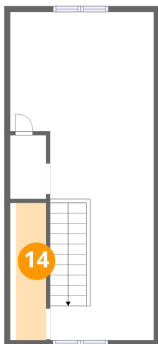
13 Floor 2 - Hall



Dimensions: 6'2" x 11'4"
Area: 42 sq. ft
Counted as living area: Yes

Heated: Yes
Finished: Yes
Enclosed: Yes
Contiguous: Yes
Permitted: Yes
Wet space: No
Addition: No
Conversion: No

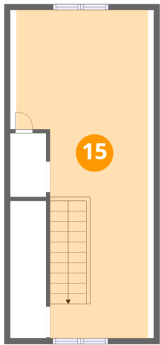
14 Floor 3 - Room



Dimensions: 3'2" x 12'0"
Area: 32 sq. ft
Counted as living area: Yes

Heated: Yes
Finished: Yes
Enclosed: Yes
Contiguous: Yes
Permitted: Yes
Wet space: No
Addition: No
Conversion: No

15 Floor 3 - Room



Dimensions: 11'6" x 28'8"
Area: 276 sq. ft
Counted as living area: Yes

Heated: Yes
Finished: Yes
Enclosed: Yes
Contiguous: Yes
Permitted: Yes
Wet space: No
Addition: No
Conversion: No