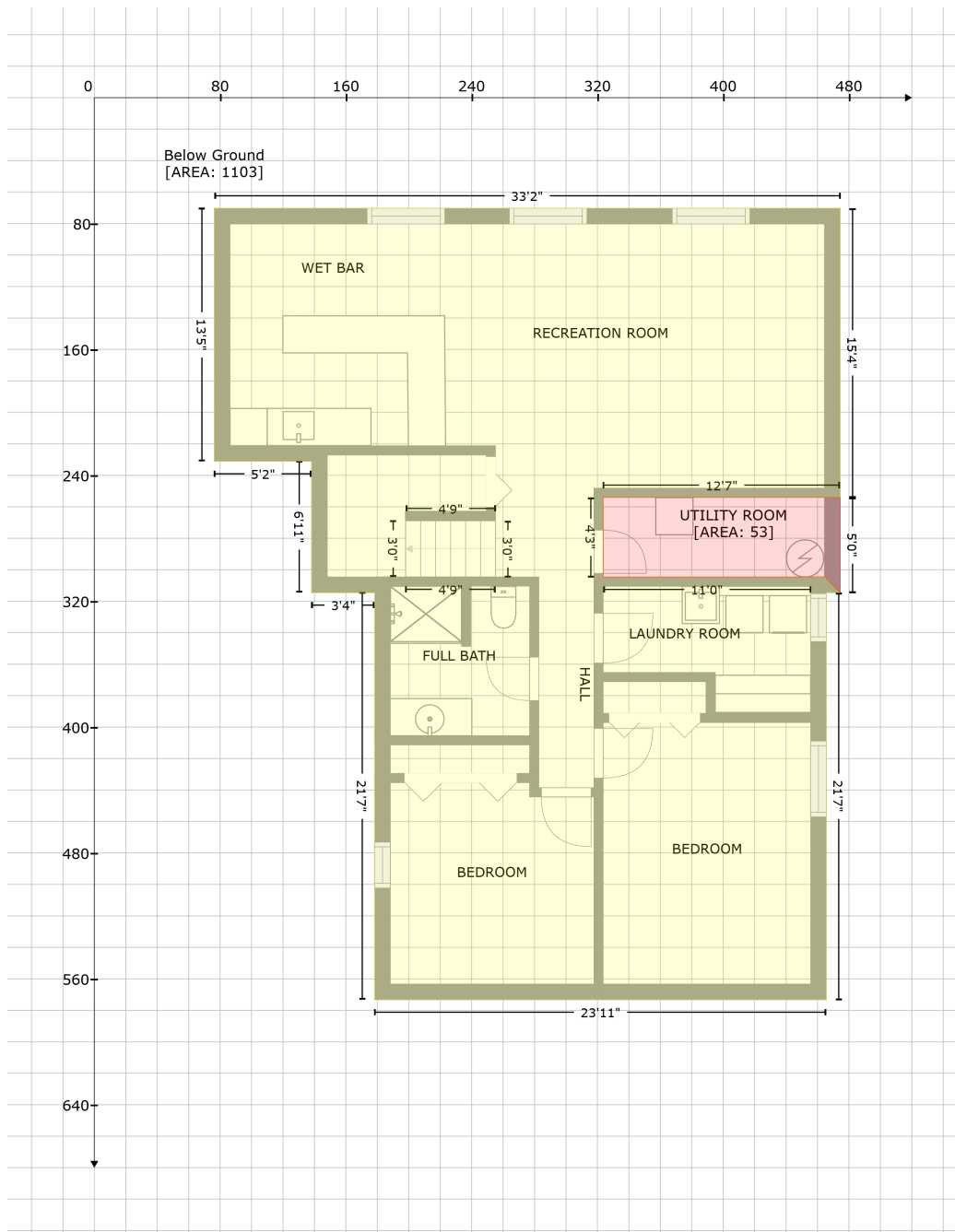


3902 Farmington Dr, Champaign, IL, United States

Gross Living Area: 1323 sq. ft



Space

Area (sq. ft)

Calculation Coordinate Polygon Area Algorithm using inches

Below Ground
(Living area)

1103

$$\begin{aligned}
 & -((474.4 + 474.4) * (70.2 - 254.1) + (474.4 + 323.7) * (254.1 - 254.1) + (323.7 + 323.7) * (254.1 - \\
 & 304.6) + (323.7 + 455.6) * (304.6 - 304.6) + (455.6 + 455.6) * (304.6 - 304.6) + (455.6 + 464.4) * \\
 & (304.6 - 304.6) + (464.4 + 465.6) * (304.6 - 304.6) + (465.6 + 465.6) * (304.6 - 305.8) + (465.6 + \\
 & 474.4) * (305.8 - 314.6) + (474.4 + 465.6) * (314.6 - 314.6) + (465.6 + 465.6) * (314.6 - 573.3) + \\
 & (465.6 + 178.3) * (573.3 - 573.3) + (178.3 + 178.3) * (573.3 - 314.6) + (178.3 + 138.2) * (314.6 - \\
 & 314.6) + (138.2 + 138.2) * (314.6 - 231.2) + (138.2 + 76.3) * (231.2 - 231.2) + (76.3 + 76.3) * \\
 & (231.2 - 70.2) + (76.3 + 474.4) * (70.2 - 70.2)) * 0.5 * 0.00694
 \end{aligned}$$

3902 Farmington Dr, Champaign, IL, United States

Gross Living Area: 1323 sq. ft

Space	Area (sq. ft)	Calculation <small>Coordinate Polygon Area Algorithm using inches</small>
UTILITY ROOM (Non-living area)	53	$\begin{aligned} & -((474.4 + 474.4) * (254.1 - 314.6) + (474.4 + 465.6) * (314.6 - 305.8) + (465.6 + 465.6) * (305.8 - \\ & 304.6) + (465.6 + 464.4) * (304.6 - 304.6) + (464.4 + 455.6) * (304.6 - 304.6) + (455.6 + 455.6) * \\ & (304.6 - 304.6) + (455.6 + 323.7) * (304.6 - 304.6) + (323.7 + 323.7) * (304.6 - 254.1) + (323.7 + \\ & 474.4) * (254.1 - 254.1)) * 0.5 * 0.00694 \end{aligned}$

3902 Farmington Dr, Champaign, IL, United States

Gross Living Area: 1323 sq. ft



Space	Area (sq. ft)	Calculation <small>Coordinate Polygon Area Algorithm using inches</small>
FLOOR 2 (Living area)	1323	$ \begin{aligned} & -((388.2 + 388.2) * (74.7 - 83.9) + (388.2 + 793) * (83.9 - 83.9) + (793 + 793) * (83.9 - 600.4) + \\ & (793 + 469.2) * (600.4 - 600.4) + (469.2 + 469.2) * (600.4 - 340.1) + (469.2 + 388.2) * (340.1 - \\ & 340.1) + (388.2 + 384.2) * (340.1 - 336.1) + (384.2 + 384.2) * (336.1 - 340.1) + (384.2 + 378.3) * \\ & (340.1 - 340.1) + (378.3 + 378.3) * (340.1 - 93.9) + (378.3 + 378.2) * (93.9 - 93.9) + (378.2 + \\ & 378.2) * (93.9 - 84.7) + (378.2 + 388.2) * (84.7 - 74.7)) * 0.5 * 0.00694 \end{aligned} $
GARAGE (Non-living area)	627	$ \begin{aligned} & -((388.2 + 378.2) * (74.7 - 84.7) + (378.2 + 378.2) * (84.7 - 93.9) + (378.2 + 378.3) * (93.9 - 93.9) + \\ & (378.3 + 378.2) * (93.9 - 330.1) + (378.2 + 378.3) * (330.1 - 340.1) + (378.3 + 384.2) * (340.1 - \\ & 340.1) + (384.2 + 384.2) * (340.1 - 336.1) + (384.2 + 388.3) * (336.1 - 340) + (388.3 + 388.2) * \\ & (340 - 340.1) + (388.2 + 388.2) * (340.1 - 375.4) + (388.2 + 79.4) * (375.4 - 375.4) + (79.4 + 79.4) * \\ & (375.4 - 74.7) + (79.4 + 388.2) * (74.7 - 74.7)) * 0.5 * 0.00694 \end{aligned} $