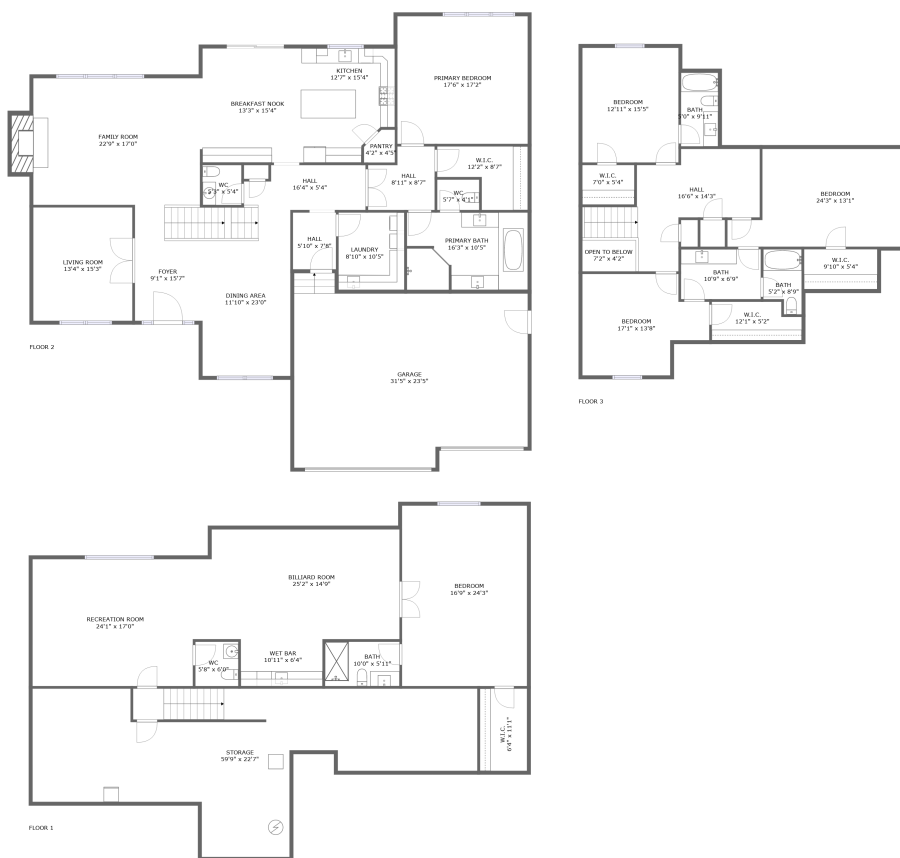


1606 Sandcherry Ct, Champaign, IL, US



Property summary

 **1** Garages

 **5** Bedrooms

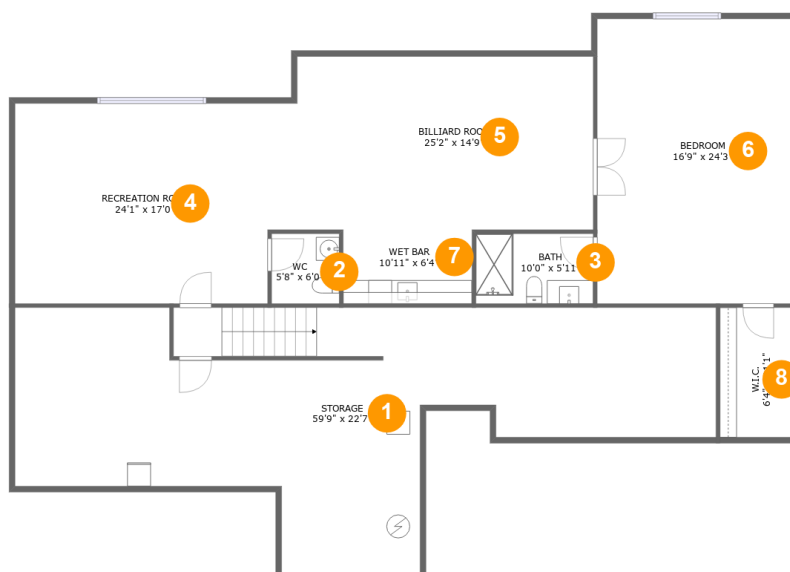
 **4** Bathrooms

 **2** Half baths

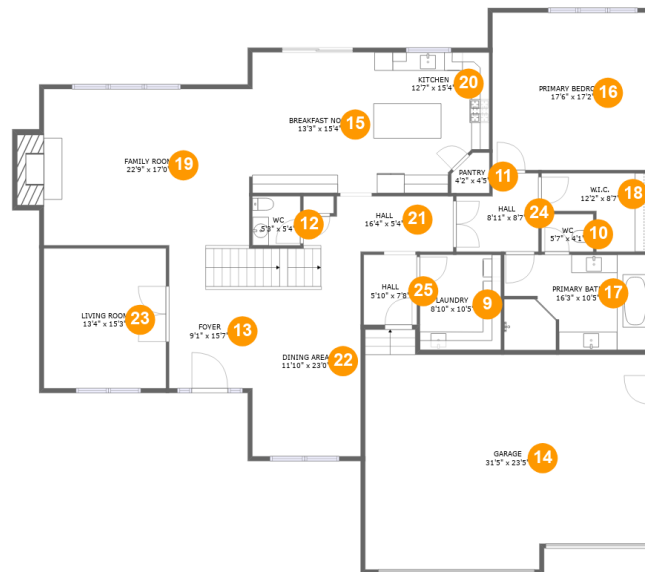
 **3** Floors

 **5,338** Gross living area sqft

 **7,069** Total sqft

1606 Sandcherry Ct,Champaign ,IL,US**Room dimensions****Floor 1****Total sqft: 2444 Living area: 1520**

#		Dimensions	sqft	Counted as living area
1	Storage	59'9" x 22'7"	867 sq. ft	No
2	Bath	5'8" x 6'0"	34 sq. ft	Yes
3	Bath	10'0" x 5'11"	60 sq. ft	Yes
4	Recreation Room	24'1" x 17'0"	395 sq. ft	Yes
5	Room	25'2" x 14'9"	373 sq. ft	Yes
6	Bedroom	16'9" x 24'3"	408 sq. ft	Yes
7	Bar	10'11" x 6'4"	69 sq. ft	Yes
8	Cl	6'4" x 11'1"	70 sq. ft	Yes

1606 Sandcherry Ct, Champaign, IL, US**Room dimensions**

Floor 2

Total sqft: 3248 Living area: 2473

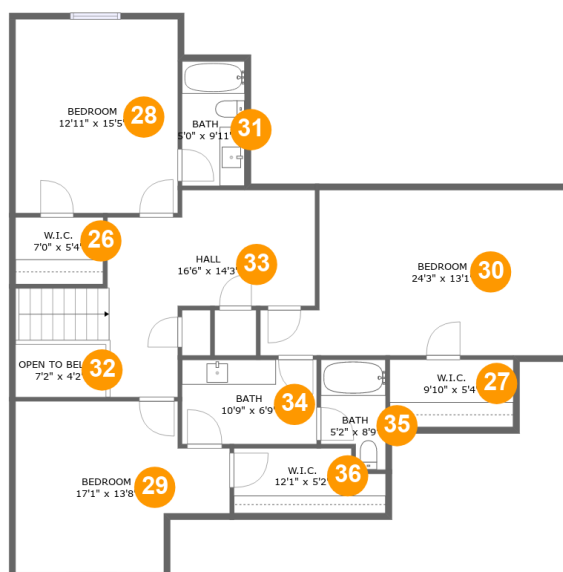
#		Dimensions	sqft	Counted as living area
9	Utility	8'10" x 10'5"	92 sq. ft	Yes
10	Bath	5'7" x 4'1"	23 sq. ft	Yes
11	Pantry	4'2" x 4'5"	16 sq. ft	Yes
12	Bath	5'3" x 5'4"	28 sq. ft	Yes
13	Entry	9'1" x 15'7"	141 sq. ft	Yes
14	Garage	31'5" x 23'5"	715 sq. ft	No
15	Nook	13'3" x 15'4"	203 sq. ft	Yes
16	Bedroom	17'6" x 17'2"	301 sq. ft	Yes
17	Bath	16'3" x 10'5"	166 sq. ft	Yes
18	Cl	12'2" x 8'7"	78 sq. ft	Yes
19	Living Room	22'9" x 17'0"	408 sq. ft	Yes

Scan captured on Mon, 11 Nov 2024 21:35:09 GMT

Information is calculated by Cubicasa technology deemed highly reliable but not guaranteed.

1606 Sandcherry Ct,Champaign ,IL,US

#		Dimensions	sqft	Counted as living area
20	Kitchen	12'7" x 15'4"	175 sq. ft	Yes
21	Hall	16'4" x 5'4"	80 sq. ft	Yes
22	Dining Room	11'10" x 23'0"	277 sq. ft	Yes
23	Living Room	13'4" x 15'3"	203 sq. ft	Yes
24	Hall	8'11" x 8'7"	67 sq. ft	Yes
25	Hall	5'10" x 7'8"	44 sq. ft	Yes

1606 Sandcherry Ct, Champaign, IL, US**Room dimensions**

Floor 3

Total sqft: 1377 Living area: 1345

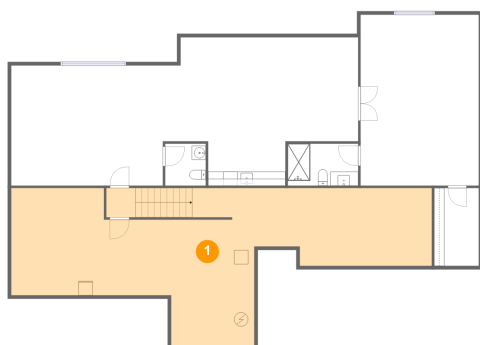
#		Dimensions	sqft	Counted as living area
26	Cl	7'0" x 5'4"	37 sq. ft	Yes
27	Cl	9'10" x 5'4"	53 sq. ft	Yes
28	Bedroom	12'11" x 15'5"	199 sq. ft	Yes
29	Bedroom	17'1" x 13'8"	192 sq. ft	Yes
30	Bedroom	24'3" x 13'1"	274 sq. ft	Yes
31	Bath	5'0" x 9'11"	50 sq. ft	Yes
32	Open To Below	7'2" x 4'2"	30 sq. ft	No
33	Hall	16'6" x 14'3"	213 sq. ft	Yes
34	Bath	10'9" x 6'9"	72 sq. ft	Yes
35	Bath	5'2" x 8'9"	39 sq. ft	Yes
36	Cl	12'1" x 5'2"	57 sq. ft	Yes

Scan captured on Mon, 11 Nov 2024 21:35:09 GMT

Information is calculated by Cubicasa technology deemed highly reliable but not guaranteed.

1606 Sandcherry Ct, Champaign, IL, US

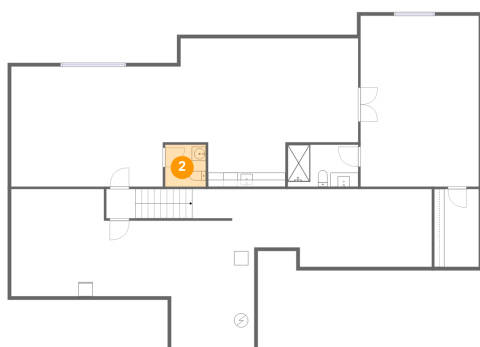
1 Floor 1 - Storage



Dimensions: 59'9" x 22'7"
Area: 867 sq. ft
Counted as living area: No

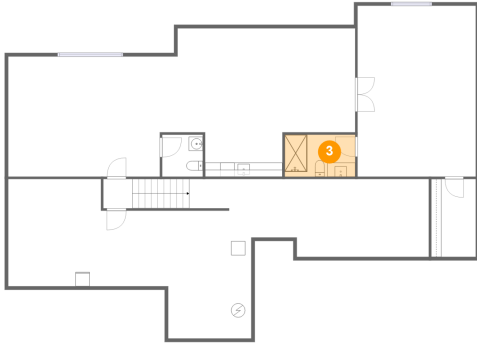
Heated: No
Finished: No
Enclosed: No
Contiguous: Yes
Permitted: Yes
Wet space: No
Addition: No
Conversion: No

2 Floor 1 - Bath



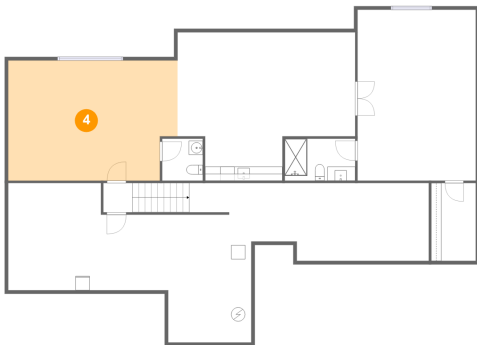
Dimensions: 5'8" x 6'0"
Area: 34 sq. ft
Counted as living area: Yes

Heated: Yes
Finished: Yes
Enclosed: Yes
Contiguous: Yes
Permitted: Yes
Wet space: Yes
Addition: No
Conversion: No

1606 Sandcherry Ct, Champaign, IL, US**3 Floor 1 - Bath**

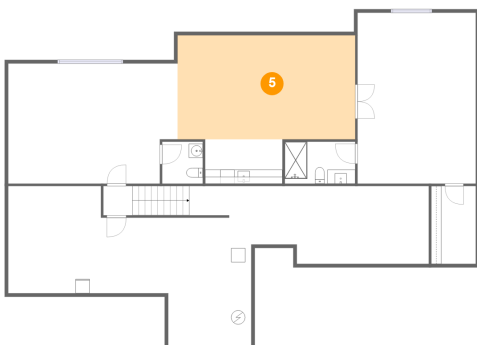
Dimensions: 10'0" x 5'11"
Area: 60 sq. ft
Counted as living area: Yes

Heated: Yes
Finished: Yes
Enclosed: Yes
Contiguous: Yes
Permitted: Yes
Wet space: Yes
Addition: No
Conversion: No

4 Floor 1 - Recreation Room

Dimensions: 24'1" x 17'0"
Area: 395 sq. ft
Counted as living area: Yes

Heated: Yes
Finished: Yes
Enclosed: Yes
Contiguous: Yes
Permitted: Yes
Wet space: No
Addition: No
Conversion: No

5 Floor 1 - Room

Dimensions: 25'2" x 14'9"
Area: 373 sq. ft
Counted as living area: Yes

Heated: Yes
Finished: Yes
Enclosed: Yes
Contiguous: Yes
Permitted: Yes
Wet space: No
Addition: No
Conversion: No

1606 Sandcherry Ct, Champaign, IL, US

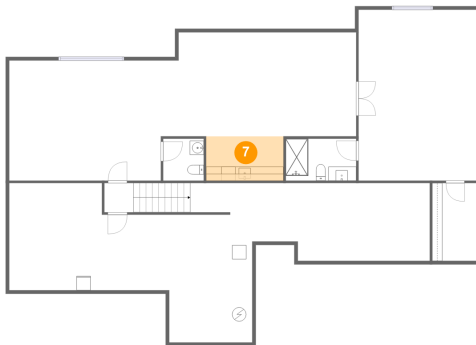
6 Floor 1 - Bedroom



Dimensions: 16'9" x 24'3"
Area: 408 sq. ft
Counted as living area: Yes

Heated: Yes
Finished: Yes
Enclosed: Yes
Contiguous: Yes
Permitted: Yes
Wet space: No
Addition: No
Conversion: No

7 Floor 1 - Bar



Dimensions: 10'11" x 6'4"
Area: 69 sq. ft
Counted as living area: Yes

Heated: Yes
Finished: Yes
Enclosed: Yes
Contiguous: Yes
Permitted: Yes
Wet space: No
Addition: No
Conversion: No

8 Floor 1 - Cl



Dimensions: 6'4" x 11'1"
Area: 70 sq. ft
Counted as living area: Yes

Heated: Yes
Finished: Yes
Enclosed: Yes
Contiguous: Yes
Permitted: Yes
Wet space: No
Addition: No
Conversion: No

1606 Sandcherry Ct, Champaign, IL, US

9 Floor 2 - Utility



Dimensions: 8'10" x 10'5"
Area: 92 sq. ft
Counted as living area: Yes

Heated: Yes
Finished: Yes
Enclosed: Yes
Contiguous: Yes
Permitted: Yes
Wet space: No
Addition: No
Conversion: No

10 Floor 2 - Bath



Dimensions: 5'7" x 4'1"
Area: 23 sq. ft
Counted as living area: Yes

Heated: Yes
Finished: Yes
Enclosed: Yes
Contiguous: Yes
Permitted: Yes
Wet space: Yes
Addition: No
Conversion: No

11 Floor 2 - Pantry



Dimensions: 4'2" x 4'5"
Area: 16 sq. ft
Counted as living area: Yes

Heated: Yes
Finished: Yes
Enclosed: Yes
Contiguous: Yes
Permitted: Yes
Wet space: No
Addition: No
Conversion: No

1606 Sandcherry Ct, Champaign, IL, US

12 Floor 2 - Bath



Dimensions: 5'3" x 5'4"
Area: 28 sq. ft
Counted as living area: Yes

Heated: Yes
Finished: Yes
Enclosed: Yes
Contiguous: Yes
Permitted: Yes
Wet space: Yes
Addition: No
Conversion: No

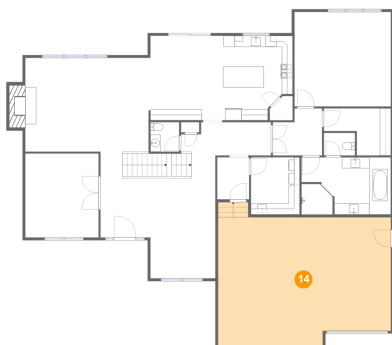
13 Floor 2 - Entry



Dimensions: 9'1" x 15'7"
Area: 141 sq. ft
Counted as living area: Yes

Heated: Yes
Finished: Yes
Enclosed: Yes
Contiguous: Yes
Permitted: Yes
Wet space: No
Addition: No
Conversion: No

14 Floor 2 - Garage

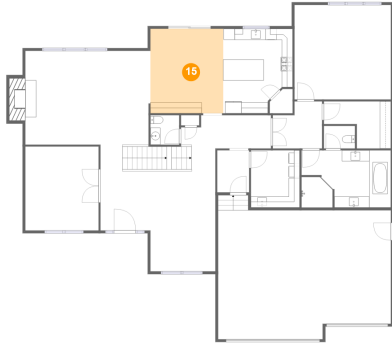


Dimensions: 31'5" x 23'5"
Area: 715 sq. ft
Counted as living area: No

Heated: No
Finished: No
Enclosed: Yes
Contiguous: Yes
Permitted: Yes
Wet space: No
Addition: No
Conversion: No

1606 Sandcherry Ct, Champaign, IL, US

15 Floor 2 - Nook



Dimensions: 13'3" x 15'4"
Area: 203 sq. ft
Counted as living area: Yes

Heated: Yes
Finished: Yes
Enclosed: Yes
Contiguous: Yes
Permitted: Yes
Wet space: No
Addition: No
Conversion: No

16 Floor 2 - Bedroom



Dimensions: 17'6" x 17'2"
Area: 301 sq. ft
Counted as living area: Yes

Heated: Yes
Finished: Yes
Enclosed: Yes
Contiguous: Yes
Permitted: Yes
Wet space: No
Addition: No
Conversion: No

17 Floor 2 - Bath



Dimensions: 16'3" x 10'5"
Area: 166 sq. ft
Counted as living area: Yes

Heated: Yes
Finished: Yes
Enclosed: Yes
Contiguous: Yes
Permitted: Yes
Wet space: Yes
Addition: No
Conversion: No

1606 Sandcherry Ct, Champaign, IL, US

18 Floor 2 - Cl



Dimensions: 12'2" x 8'7"
Area: 78 sq. ft
Counted as living area: Yes

Heated: Yes
Finished: Yes
Enclosed: Yes
Contiguous: Yes
Permitted: Yes
Wet space: No
Addition: No
Conversion: No

19 Floor 2 - Living Room



Dimensions: 22'9" x 17'0"
Area: 408 sq. ft
Counted as living area: Yes

Heated: Yes
Finished: Yes
Enclosed: Yes
Contiguous: Yes
Permitted: Yes
Wet space: No
Addition: No
Conversion: No

20 Floor 2 - Kitchen

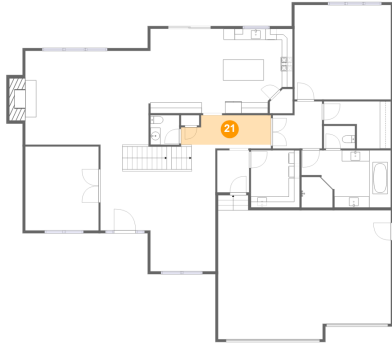


Dimensions: 12'7" x 15'4"
Area: 175 sq. ft
Counted as living area: Yes

Heated: Yes
Finished: Yes
Enclosed: Yes
Contiguous: Yes
Permitted: Yes
Wet space: No
Addition: No
Conversion: No

1606 Sandcherry Ct, Champaign, IL, US

21 Floor 2 - Hall



Dimensions: 16'4" x 5'4"
Area: 80 sq. ft
Counted as living area: Yes

Heated: Yes
Finished: Yes
Enclosed: Yes
Contiguous: Yes
Permitted: Yes
Wet space: No
Addition: No
Conversion: No

22 Floor 2 - Dining Room



Dimensions: 11'10" x 23'0"
Area: 277 sq. ft
Counted as living area: Yes

Heated: Yes
Finished: Yes
Enclosed: Yes
Contiguous: Yes
Permitted: Yes
Wet space: No
Addition: No
Conversion: No

23 Floor 2 - Living Room



Dimensions: 13'4" x 15'3"
Area: 203 sq. ft
Counted as living area: Yes

Heated: Yes
Finished: Yes
Enclosed: Yes
Contiguous: Yes
Permitted: Yes
Wet space: No
Addition: No
Conversion: No

1606 Sandcherry Ct, Champaign, IL, US

24 Floor 2 - Hall



Dimensions: 8'11" x 8'7"
Area: 67 sq. ft
Counted as living area: Yes

Heated: Yes
Finished: Yes
Enclosed: Yes
Contiguous: Yes
Permitted: Yes
Wet space: No
Addition: No
Conversion: No

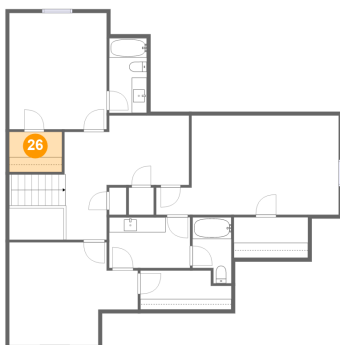
25 Floor 2 - Hall



Dimensions: 5'10" x 7'8"
Area: 44 sq. ft
Counted as living area: Yes

Heated: Yes
Finished: Yes
Enclosed: Yes
Contiguous: Yes
Permitted: Yes
Wet space: No
Addition: No
Conversion: No

26 Floor 3 - Cl

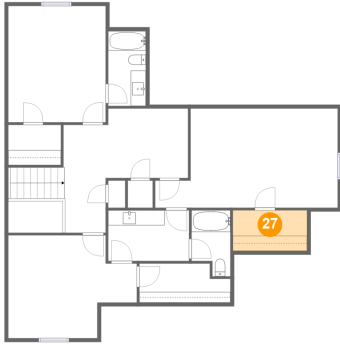


Dimensions: 7'0" x 5'4"
Area: 37 sq. ft
Counted as living area: Yes

Heated: Yes
Finished: Yes
Enclosed: Yes
Contiguous: Yes
Permitted: Yes
Wet space: No
Addition: No
Conversion: No

1606 Sandcherry Ct, Champaign, IL, US

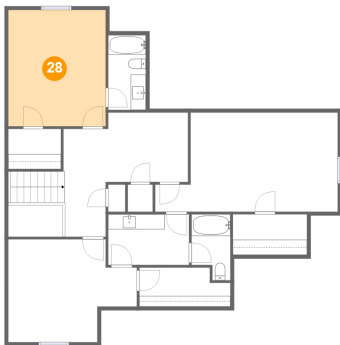
27 Floor 3 - Cl



Dimensions: 9'10" x 5'4"
Area: 53 sq. ft
Counted as living area: Yes

Heated: Yes
Finished: Yes
Enclosed: Yes
Contiguous: Yes
Permitted: Yes
Wet space: No
Addition: No
Conversion: No

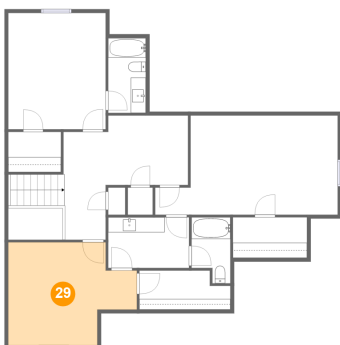
28 Floor 3 - Bedroom



Dimensions: 12'11" x 15'5"
Area: 199 sq. ft
Counted as living area: Yes

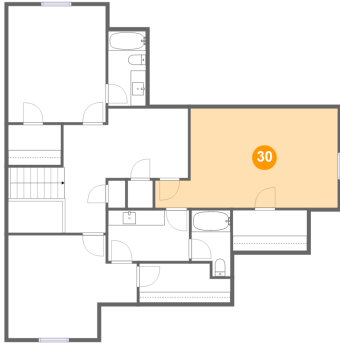
Heated: Yes
Finished: Yes
Enclosed: Yes
Contiguous: Yes
Permitted: Yes
Wet space: No
Addition: No
Conversion: No

29 Floor 3 - Bedroom



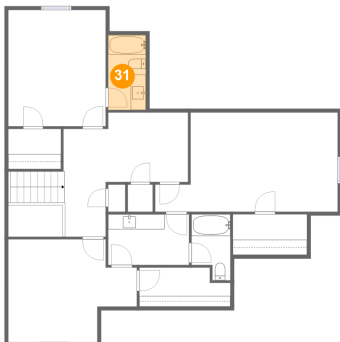
Dimensions: 17'1" x 13'8"
Area: 192 sq. ft
Counted as living area: Yes

Heated: Yes
Finished: Yes
Enclosed: Yes
Contiguous: Yes
Permitted: Yes
Wet space: No
Addition: No
Conversion: No

1606 Sandcherry Ct,Champaign ,IL,US**30 Floor 3 - Bedroom**

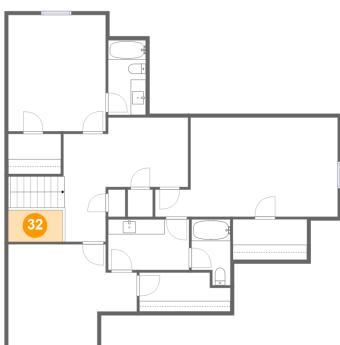
Dimensions: 24'3" x 13'1"
Area: 274 sq. ft
Counted as living area: Yes

Heated: Yes
Finished: Yes
Enclosed: Yes
Contiguous: Yes
Permitted: Yes
Wet space: No
Addition: No
Conversion: No

31 Floor 3 - Bath

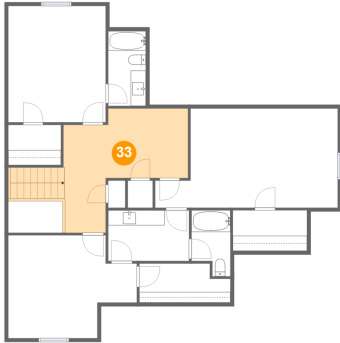
Dimensions: 5'0" x 9'11"
Area: 50 sq. ft
Counted as living area: Yes

Heated: Yes
Finished: Yes
Enclosed: Yes
Contiguous: Yes
Permitted: Yes
Wet space: Yes
Addition: No
Conversion: No

32 Floor 3 - Open To Below

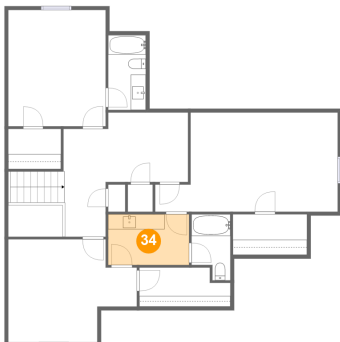
Dimensions: 7'2" x 4'2"
Area: 30 sq. ft
Counted as living area: No

Heated: No
Finished: No
Enclosed: No
Contiguous: Yes
Permitted: No
Wet space: No
Addition: No
Conversion: No

1606 Sandcherry Ct, Champaign, IL, US**33 Floor 3 - Hall**

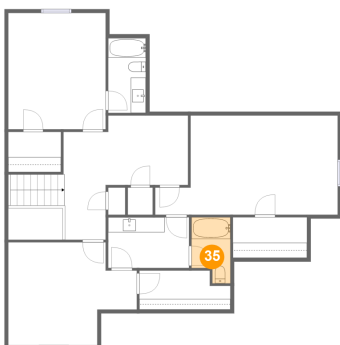
Dimensions: 16'6" x 14'3"
Area: 213 sq. ft
Counted as living area: Yes

Heated: Yes
Finished: Yes
Enclosed: Yes
Contiguous: Yes
Permitted: Yes
Wet space: No
Addition: No
Conversion: No

34 Floor 3 - Bath

Dimensions: 10'9" x 6'9"
Area: 72 sq. ft
Counted as living area: Yes

Heated: Yes
Finished: Yes
Enclosed: Yes
Contiguous: Yes
Permitted: Yes
Wet space: Yes
Addition: No
Conversion: No

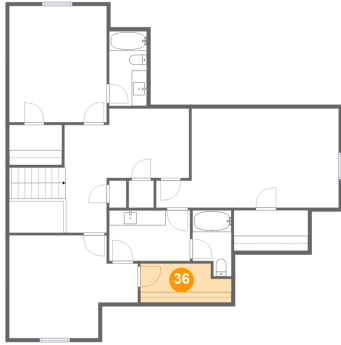
35 Floor 3 - Bath

Dimensions: 5'2" x 8'9"
Area: 39 sq. ft
Counted as living area: Yes

Heated: Yes
Finished: Yes
Enclosed: Yes
Contiguous: Yes
Permitted: Yes
Wet space: Yes
Addition: No
Conversion: No

1606 Sandcherry Ct, Champaign, IL, US

36 Floor 3 - Cl



Dimensions: 12'1" x 5'2"
Area: 57 sq. ft
Counted as living area: Yes

Heated: Yes
Finished: Yes
Enclosed: Yes
Contiguous: Yes
Permitted: Yes
Wet space: No
Addition: No
Conversion: No