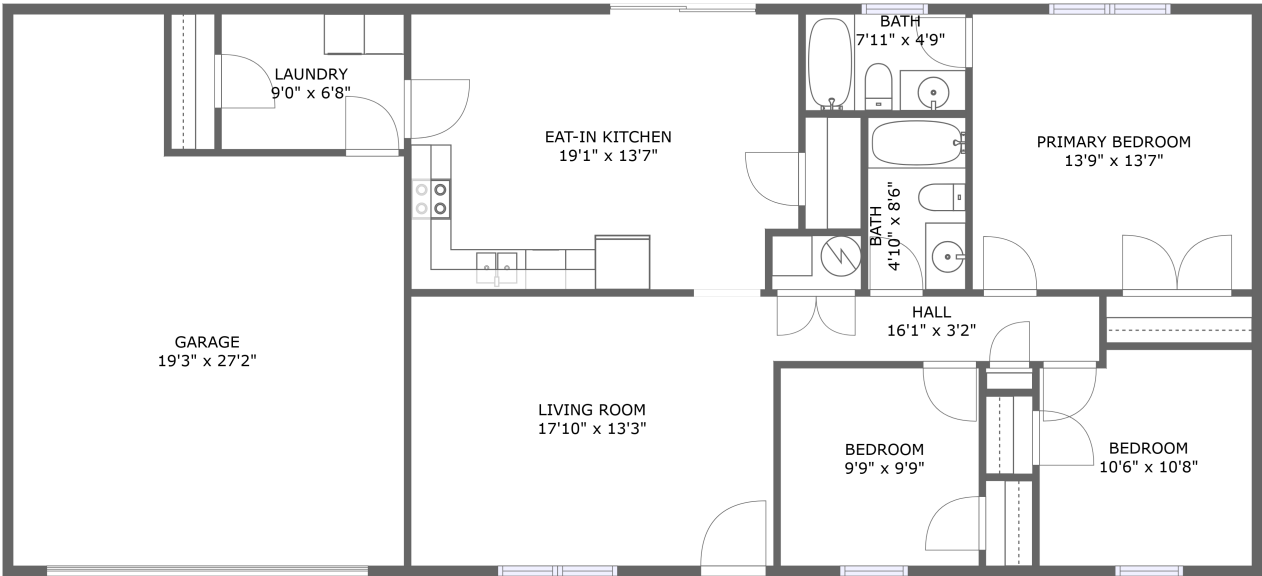


Home report

403 Reba Jackson Drive, Jeffersonville, Clark County, Indiana,  
United States, 47130



FLOOR 1

**Total GLA: 1281 sq. ft**

Floor 1: 1281 sq. ft

Excluded: Garage 469 sq. ft

Property summary



**1**  
Floors



**3**  
Bedrooms



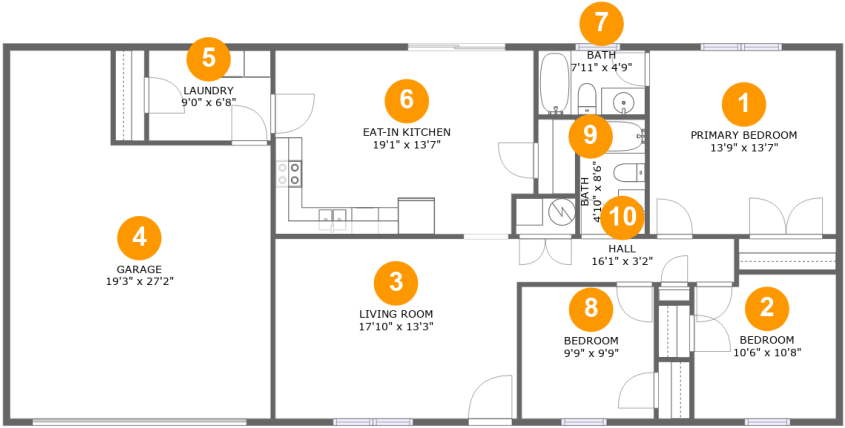
**2**  
Bathrooms



**1**  
Garages

Home report

403 Reba Jackson Drive, Jeffersonville, Clark County, Indiana,  
United States, 47130



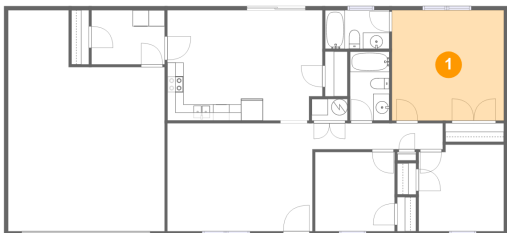
Room dimensions

Floor 1 Total:1281sqft    Excluded: 469sqft

#		Max Dimensions	sqft	Included
1	Primary Bedroom	13'9" x 13'7"	187 sq. ft	Yes
2	Bedroom	10'6" x 10'8"	109 sq. ft	Yes
3	Living Room	17'10" x 13'3"	237 sq. ft	Yes
4	Garage	19'3" x 27'2"	441 sq. ft	No
5	Laundry	9'0" x 6'8"	60 sq. ft	Yes
6	Eat-in Kitchen	19'1" x 13'7"	254 sq. ft	Yes
7	Bath	7'11" x 4'9"	38 sq. ft	Yes
8	Bedroom	9'9" x 9'9"	95 sq. ft	Yes
9	Bath	4'10" x 8'6"	41 sq. ft	Yes
10	Hall	16'1" x 3'2"	51 sq. ft	Yes

403 Reba Jackson Drive, Jeffersonville, Clark County, Indiana,  
United States, 47130

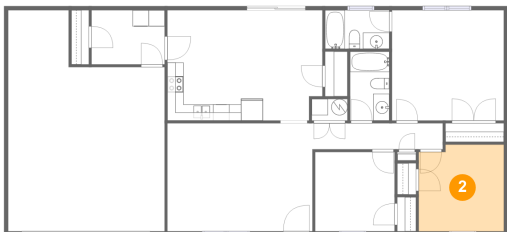
**1 Floor 1 - Primary Bedroom**



Max Dimensions: 13'9" x 13'7"  
Calculated Area: 187 sq. ft  
Included: Yes

Heated: Yes  
Finished: Yes  
Enclosed: Yes  
Contiguous: Yes  
Permitted: Yes  
Wet space: No  
Addition: No  
Conversion: No

**2 Floor 1 - Bedroom**

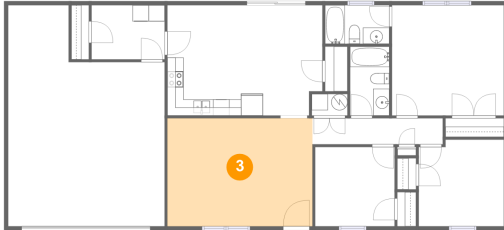


Max Dimensions: 10'6" x 10'8"  
Calculated Area: 109 sq. ft  
Included: Yes

Heated: Yes  
Finished: Yes  
Enclosed: Yes  
Contiguous: Yes  
Permitted: Yes  
Wet space: No  
Addition: No  
Conversion: No

403 Reba Jackson Drive, Jeffersonville, Clark County, Indiana,  
United States, 47130

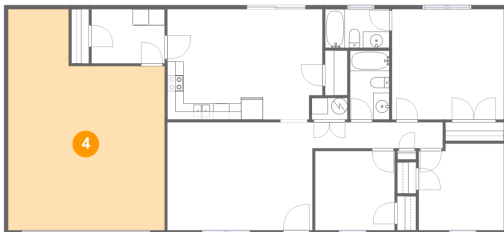
### 3 Floor 1 - Living Room



Max Dimensions: 17'10" x 13'3"  
Calculated Area: 237 sq. ft  
Included: Yes

Heated: Yes  
Finished: Yes  
Enclosed: Yes  
Contiguous: Yes  
Permitted: Yes  
Wet space: No  
Addition: No  
Conversion: No

### 4 Floor 1 - Garage



Max Dimensions: 19'3" x 27'2"  
Calculated Area: 441 sq. ft  
Included: No

Heated: No  
Finished: No  
Enclosed: Yes  
Contiguous: Yes  
Permitted: Yes  
Wet space: No  
Addition: No  
Conversion: No

### 5 Floor 1 - Laundry



Max Dimensions: 9'0" x 6'8"  
Calculated Area: 60 sq. ft  
Included: Yes

Heated: Yes  
Finished: Yes  
Enclosed: Yes  
Contiguous: Yes  
Permitted: Yes  
Wet space: No  
Addition: No  
Conversion: No

403 Reba Jackson Drive, Jeffersonville, Clark County, Indiana,  
United States, 47130

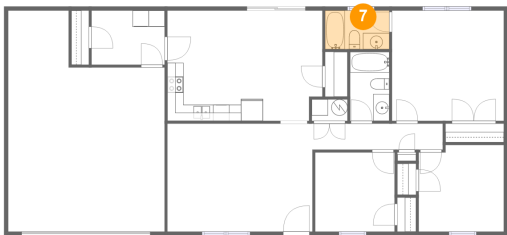
6 Floor 1 - Eat-in Kitchen



Max Dimensions: 19'1" x 13'7"  
Calculated Area: 254 sq. ft  
Included: Yes

Heated: Yes  
Finished: Yes  
Enclosed: Yes  
Contiguous: Yes  
Permitted: Yes  
Wet space: No  
Addition: No  
Conversion: No

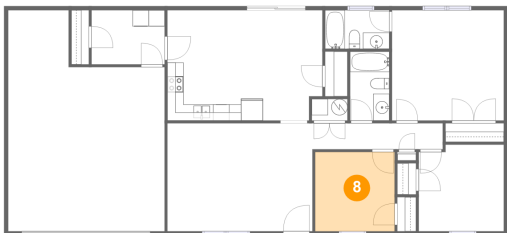
7 Floor 1 - Bath



Max Dimensions: 7'11" x 4'9"  
Calculated Area: 38 sq. ft  
Included: Yes

Heated: Yes  
Finished: Yes  
Enclosed: Yes  
Contiguous: Yes  
Permitted: Yes  
Wet space: Yes  
Addition: No  
Conversion: No

8 Floor 1 - Bedroom

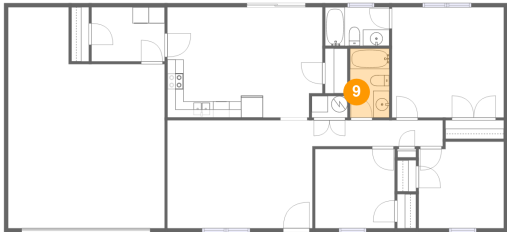


Max Dimensions: 9'9" x 9'9"  
Calculated Area: 95 sq. ft  
Included: Yes

Heated: Yes  
Finished: Yes  
Enclosed: Yes  
Contiguous: Yes  
Permitted: Yes  
Wet space: No  
Addition: No  
Conversion: No

403 Reba Jackson Drive, Jeffersonville, Clark County, Indiana,  
United States, 47130

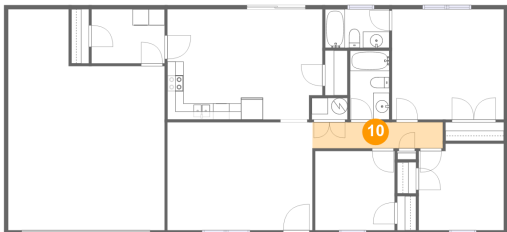
9 Floor 1 - Bath



Max Dimensions: 4'10" x 8'6"  
Calculated Area: 41 sq. ft  
Included: Yes

Heated: Yes  
Finished: Yes  
Enclosed: Yes  
Contiguous: Yes  
Permitted: Yes  
Wet space: Yes  
Addition: No  
Conversion: No

10 Floor 1 - Hall



Max Dimensions: 16'1" x 3'2"  
Calculated Area: 51 sq. ft  
Included: Yes

Heated: Yes  
Finished: Yes  
Enclosed: Yes  
Contiguous: Yes  
Permitted: Yes  
Wet space: No  
Addition: No  
Conversion: No