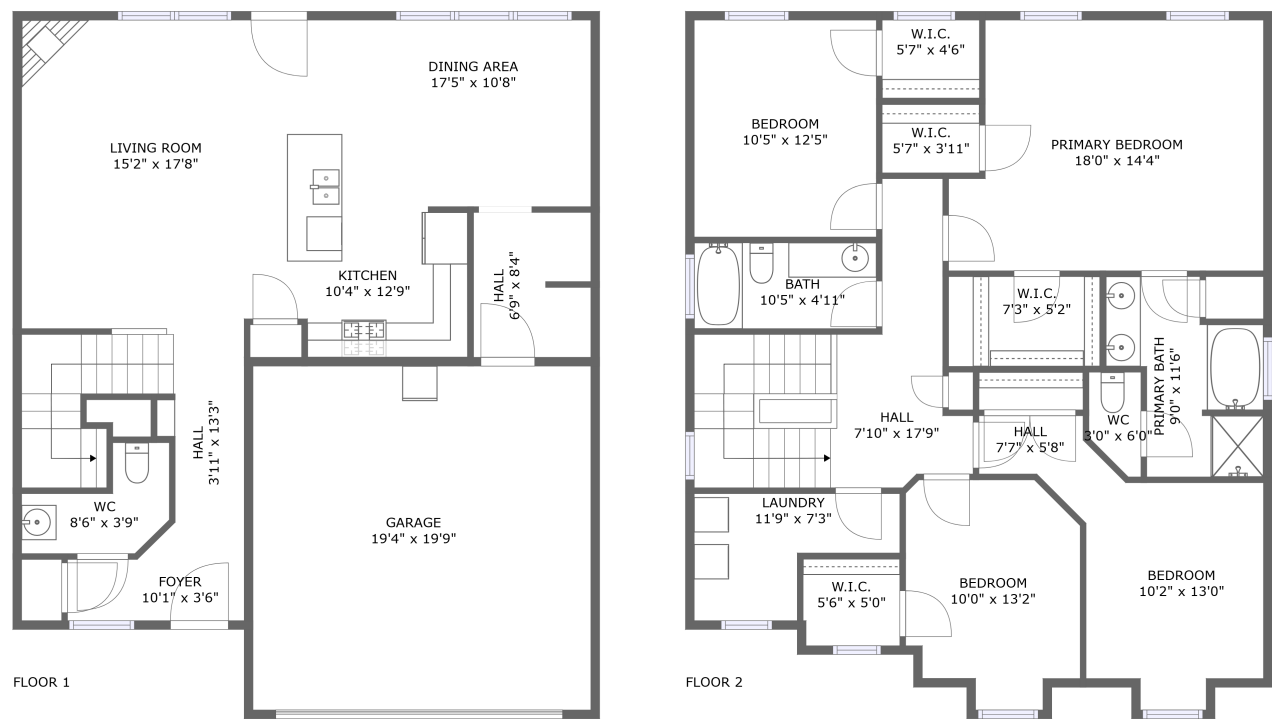





123 Calming Creek Way, Columbia, Richland County,
South Carolina, United States, 29045




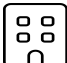
Property summary


**1** Garages


**4** Bedrooms

**2** Bathrooms

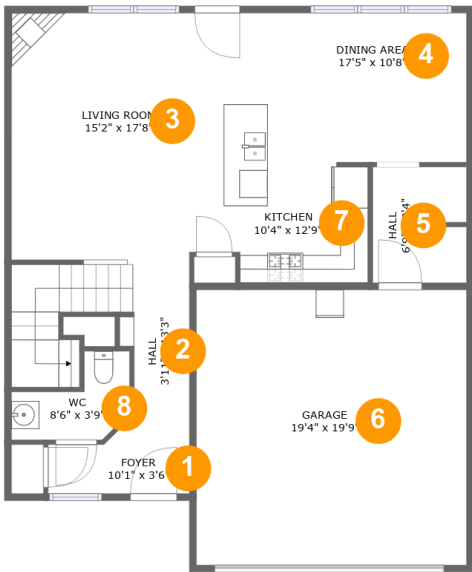
**1** Half baths

**2** Floors

**2,176** Gross living area sqft

**2,580** Total sqft

123 Calming Creek Way, Columbia, Richland County,
South Carolina, United States, 29045



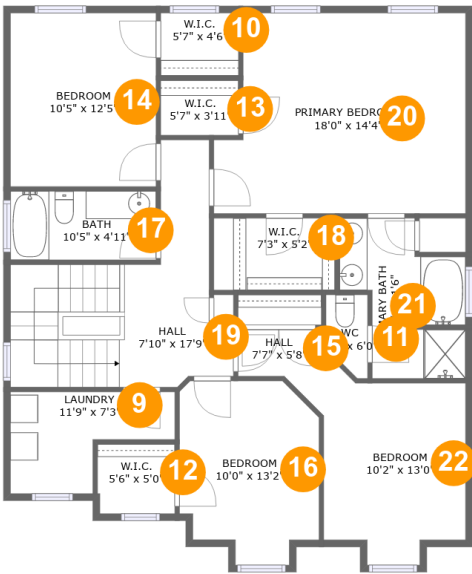
Room dimensions

Floor 1

Total sqft: 1295 Living area: 891

#		Dimensions	sqft	Counted as living area
1	Foyer	10'1" x 3'6"	36 sq. ft	Yes
2	Hall	3'11" x 13'3"	111 sq. ft	Yes
3	Living Room	15'2" x 17'8"	268 sq. ft	Yes
4	Dining Area	17'5" x 10'8"	152 sq. ft	Yes
5	Hall	6'9" x 8'4"	55 sq. ft	Yes
6	Garage	19'4" x 19'9"	381 sq. ft	No
7	Kitchen	10'4" x 12'9"	119 sq. ft	Yes
8	WC	8'6" x 3'9"	37 sq. ft	Yes

123 Calming Creek Way, Columbia, Richland County,
South Carolina, United States, 29045



Room dimensions

Floor 2 Total sqft: 1285 Living area: 1285

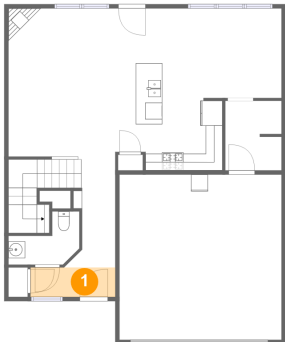
#		Dimensions	sqft	Counted as living area
9	Laundry	11'9" x 7'3"	63 sq. ft	Yes
10	W.I.C.	5'7" x 4'6"	25 sq. ft	Yes
11	WC	3'0" x 6'0"	15 sq. ft	Yes
12	W.I.C.	5'6" x 5'0"	27 sq. ft	Yes
13	W.I.C.	5'7" x 3'11"	22 sq. ft	Yes
14	Bedroom	10'5" x 12'5"	130 sq. ft	Yes
15	Hall	7'7" x 5'8"	29 sq. ft	Yes
16	Bedroom	10'0" x 13'2"	115 sq. ft	Yes
17	Bath	10'5" x 4'11"	51 sq. ft	Yes
18	W.I.C.	7'3" x 5'2"	45 sq. ft	Yes
19	Hall	7'10" x 17'9"	160 sq. ft	Yes

123 Calming Creek Way, Columbia, Richland County,
South Carolina, United States, 29045

#		Dimensions	sqft	Counted as living area
20	Primary Bedroom	18'0" x 14'4"	240 sq. ft	Yes
21	Primary Bath	9'0" x 11'6"	78 sq. ft	Yes
22	Bedroom	10'2" x 13'0"	118 sq. ft	Yes

123 Calming Creek Way, Columbia, Richland County,
South Carolina, United States, 29045

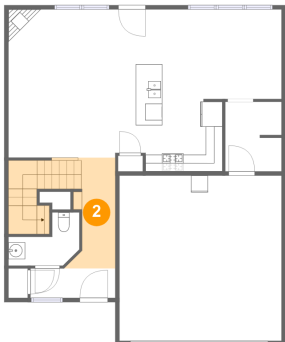
1 Floor 1 - Foyer



Dimensions: 10'1" x 3'6"
Area: 36 sq. ft
Counted as living area: Yes

Heated: Yes
Finished: Yes
Enclosed: Yes
Contiguous: Yes
Permitted: Yes
Wet space: No
Addition: No
Conversion: No

2 Floor 1 - Hall

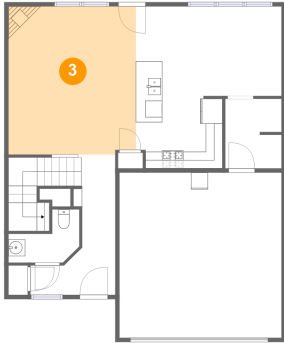


Dimensions: 3'11" x 13'3"
Area: 111 sq. ft
Counted as living area: Yes

Heated: Yes
Finished: Yes
Enclosed: Yes
Contiguous: Yes
Permitted: Yes
Wet space: No
Addition: No
Conversion: No

123 Calming Creek Way, Columbia, Richland County,
South Carolina, United States, 29045

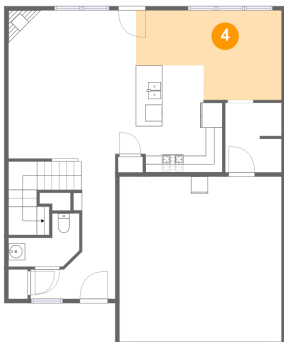
3 Floor 1 - Living Room



Dimensions: 15'2" x 17'8"
Area: 268 sq. ft
Counted as living area: Yes

Heated: Yes
Finished: Yes
Enclosed: Yes
Contiguous: Yes
Permitted: Yes
Wet space: No
Addition: No
Conversion: No

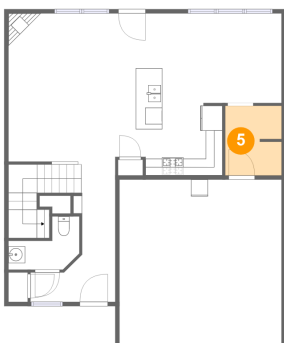
4 Floor 1 - Dining Area



Dimensions: 17'5" x 10'8"
Area: 152 sq. ft
Counted as living area: Yes

Heated: Yes
Finished: Yes
Enclosed: Yes
Contiguous: Yes
Permitted: Yes
Wet space: No
Addition: No
Conversion: No

5 Floor 1 - Hall

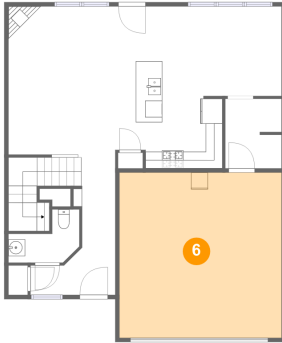


Dimensions: 6'9" x 8'4"
Area: 55 sq. ft
Counted as living area: Yes

Heated: Yes
Finished: Yes
Enclosed: Yes
Contiguous: Yes
Permitted: Yes
Wet space: No
Addition: No
Conversion: No

123 Calming Creek Way, Columbia, Richland County,
South Carolina, United States, 29045

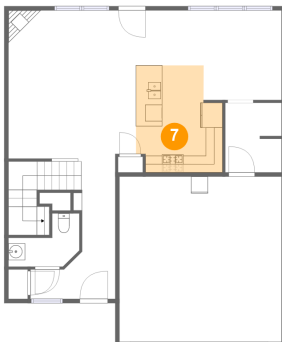
6 Floor 1 - Garage



Dimensions: 19'4" x 19'9"
Area: 381 sq. ft
Counted as living area: No

Heated: No
Finished: No
Enclosed: Yes
Contiguous: Yes
Permitted: Yes
Wet space: No
Addition: No
Conversion: No

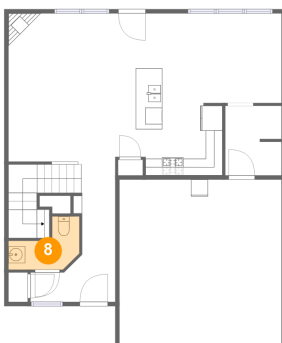
7 Floor 1 - Kitchen



Dimensions: 10'4" x 12'9"
Area: 119 sq. ft
Counted as living area: Yes

Heated: Yes
Finished: Yes
Enclosed: Yes
Contiguous: Yes
Permitted: Yes
Wet space: No
Addition: No
Conversion: No

8 Floor 1 - WC

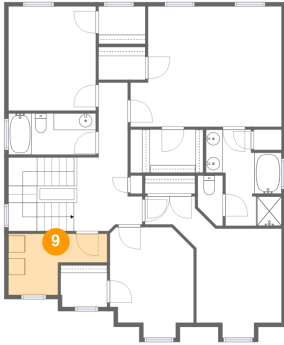


Dimensions: 8'6" x 3'9"
Area: 37 sq. ft
Counted as living area: Yes

Heated: Yes
Finished: Yes
Enclosed: Yes
Contiguous: Yes
Permitted: Yes
Wet space: Yes
Addition: No
Conversion: No

123 Calming Creek Way, Columbia, Richland County,
South Carolina, United States, 29045

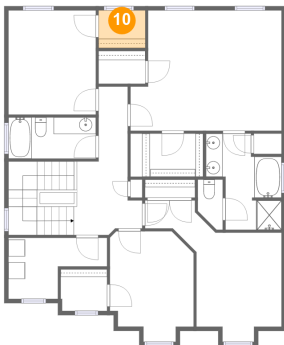
9 Floor 2 - Laundry



Dimensions: 11'9" x 7'3"
Area: 63 sq. ft
Counted as living area: Yes

Heated: Yes
Finished: Yes
Enclosed: Yes
Contiguous: Yes
Permitted: Yes
Wet space: No
Addition: No
Conversion: No

10 Floor 2 - W.I.C.



Dimensions: 5'7" x 4'6"
Area: 25 sq. ft
Counted as living area: Yes

Heated: Yes
Finished: Yes
Enclosed: Yes
Contiguous: Yes
Permitted: Yes
Wet space: No
Addition: No
Conversion: No

11 Floor 2 - WC

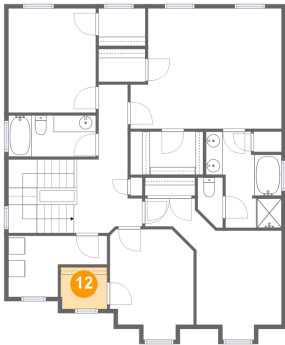


Dimensions: 3'0" x 6'0"
Area: 15 sq. ft
Counted as living area: Yes

Heated: Yes
Finished: Yes
Enclosed: Yes
Contiguous: Yes
Permitted: Yes
Wet space: Yes
Addition: No
Conversion: No

123 Calming Creek Way, Columbia, Richland County,
South Carolina, United States, 29045

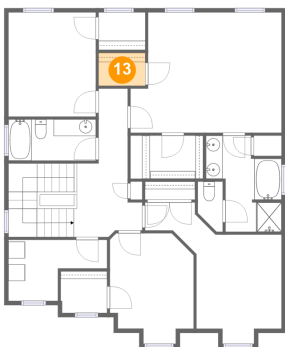
12 Floor 2 - W.I.C.



Dimensions: 5'6" x 5'0"
Area: 27 sq. ft
Counted as living area: Yes

Heated: Yes
Finished: Yes
Enclosed: Yes
Contiguous: Yes
Permitted: Yes
Wet space: No
Addition: No
Conversion: No

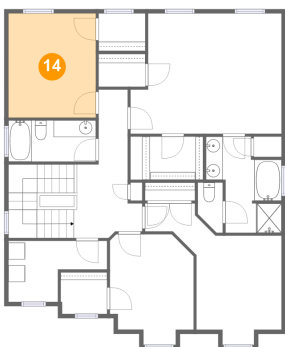
13 Floor 2 - W.I.C.



Dimensions: 5'7" x 3'11"
Area: 22 sq. ft
Counted as living area: Yes

Heated: Yes
Finished: Yes
Enclosed: Yes
Contiguous: Yes
Permitted: Yes
Wet space: No
Addition: No
Conversion: No

14 Floor 2 - Bedroom

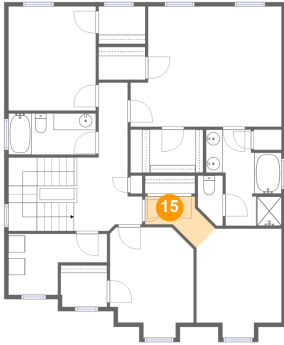


Dimensions: 10'5" x 12'5"
Area: 130 sq. ft
Counted as living area: Yes

Heated: Yes
Finished: Yes
Enclosed: Yes
Contiguous: Yes
Permitted: Yes
Wet space: No
Addition: No
Conversion: No

123 Calming Creek Way, Columbia, Richland County,
South Carolina, United States, 29045

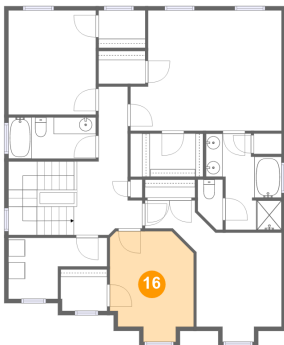
15 Floor 2 - Hall



Dimensions: 7'7" x 5'8"
Area: 29 sq. ft
Counted as living area: Yes

Heated: Yes
Finished: Yes
Enclosed: Yes
Contiguous: Yes
Permitted: Yes
Wet space: No
Addition: No
Conversion: No

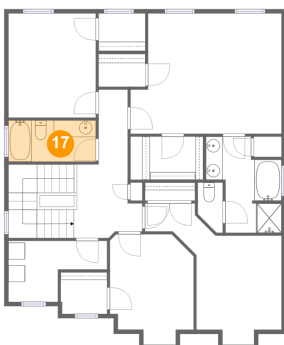
16 Floor 2 - Bedroom



Dimensions: 10'0" x 13'2"
Area: 115 sq. ft
Counted as living area: Yes

Heated: Yes
Finished: Yes
Enclosed: Yes
Contiguous: Yes
Permitted: Yes
Wet space: No
Addition: No
Conversion: No

17 Floor 2 - Bath

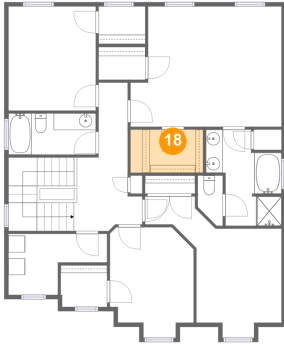


Dimensions: 10'5" x 4'11"
Area: 51 sq. ft
Counted as living area: Yes

Heated: Yes
Finished: Yes
Enclosed: Yes
Contiguous: Yes
Permitted: Yes
Wet space: Yes
Addition: No
Conversion: No

123 Calming Creek Way, Columbia, Richland County,
South Carolina, United States, 29045

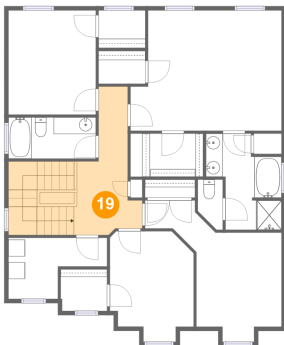
18 Floor 2 - W.I.C.



Dimensions: 7'3" x 5'2"
Area: 45 sq. ft
Counted as living area: Yes

Heated: Yes
Finished: Yes
Enclosed: Yes
Contiguous: Yes
Permitted: Yes
Wet space: No
Addition: No
Conversion: No

19 Floor 2 - Hall



Dimensions: 7'10" x 17'9"
Area: 160 sq. ft
Counted as living area: Yes

Heated: Yes
Finished: Yes
Enclosed: Yes
Contiguous: Yes
Permitted: Yes
Wet space: No
Addition: No
Conversion: No

20 Floor 2 - Primary Bedroom

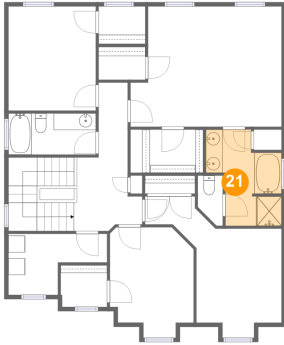


Dimensions: 18'0" x 14'4"
Area: 240 sq. ft
Counted as living area: Yes

Heated: Yes
Finished: Yes
Enclosed: Yes
Contiguous: Yes
Permitted: Yes
Wet space: No
Addition: No
Conversion: No

123 Calming Creek Way, Columbia, Richland County,
South Carolina, United States, 29045

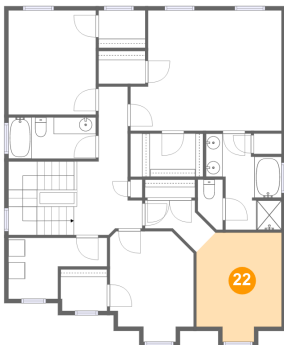
21 Floor 2 - Primary Bath



Dimensions: 9'0" x 11'6"
Area: 78 sq. ft
Counted as living area: Yes

Heated: Yes
Finished: Yes
Enclosed: Yes
Contiguous: Yes
Permitted: Yes
Wet space: Yes
Addition: No
Conversion: No

22 Floor 2 - Bedroom



Dimensions: 10'2" x 13'0"
Area: 118 sq. ft
Counted as living area: Yes

Heated: Yes
Finished: Yes
Enclosed: Yes
Contiguous: Yes
Permitted: Yes
Wet space: No
Addition: No
Conversion: No