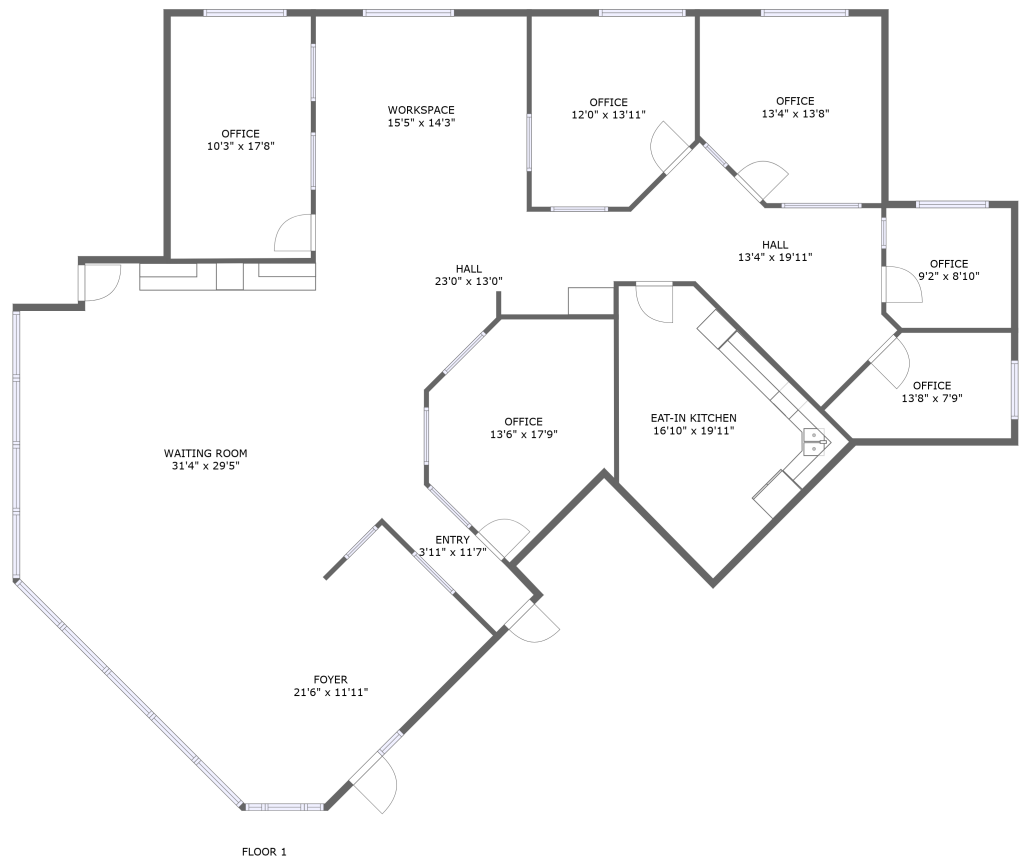





280 Liberty Street Southeast, Salem, Oregon 97301,
United States, 100




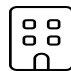
Property summary


 **0** Garages


 **0** Bedrooms

 **0** Bathrooms

 **0** Half baths

 **1** Floors

 **2,886** Gross living area sqft

 **2,886** Total sqft

**280 Liberty Street Southeast, Salem, Oregon 97301,
United States, 100**



Room dimensions

Floor 1

Total sqft: 2886 Living area: 2886

#		Dimensions	sqft	Counted as living area
1	Waiting Room	31'4" x 29'5"	721 sq. ft	Yes
2	Entry	3'11" x 11'7"	46 sq. ft	Yes
3	Hall	23'0" x 13'0"	192 sq. ft	Yes
4	Eat-in Kitchen	16'10" x 19'11"	222 sq. ft	Yes
5	Office	13'8" x 7'9"	88 sq. ft	Yes
6	Office	13'4" x 13'8"	170 sq. ft	Yes
7	Office	10'3" x 17'8"	182 sq. ft	Yes
8	Office	12'0" x 13'11"	155 sq. ft	Yes
9	Office	13'6" x 17'9"	181 sq. ft	Yes
10	Hall	13'4" x 19'11"	196 sq. ft	Yes
11	Office	9'2" x 8'10"	80 sq. ft	Yes

Scan captured on Mon, 10 Mar 2025 18:33:24 GMT

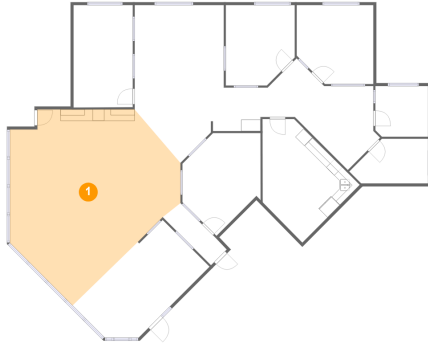
Information is calculated by Cubicasa technology deemed highly reliable but not guaranteed.

**280 Liberty Street Southeast, Salem, Oregon 97301,
United States, 100**

#		Dimensions	sqft	Counted as living area
12	Foyer	21'6" x 11'11"	246 sq. ft	Yes
13	Workspace	15'5" x 14'3"	220 sq. ft	Yes

**280 Liberty Street Southeast, Salem, Oregon 97301,
United States, 100**

1 Floor 1 - Waiting Room



Dimensions: 31'4" x 29'5"
Area: 721 sq. ft
Counted as living area: Yes

Heated: Yes
Finished: Yes
Enclosed: Yes
Contiguous: Yes
Permitted: Yes
Wet space: No
Addition: No
Conversion: No

2 Floor 1 - Entry

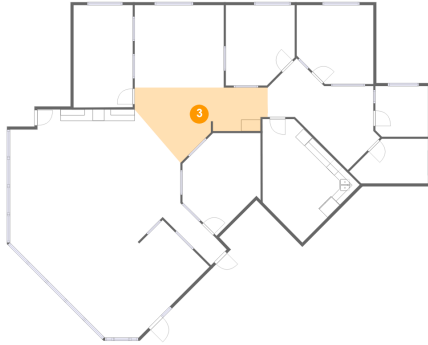


Dimensions: 3'11" x 11'7"
Area: 46 sq. ft
Counted as living area: Yes

Heated: Yes
Finished: Yes
Enclosed: Yes
Contiguous: Yes
Permitted: Yes
Wet space: No
Addition: No
Conversion: No

**280 Liberty Street Southeast, Salem, Oregon 97301,
United States, 100**

3 Floor 1 - Hall



Dimensions: 23'0" x 13'0"
Area: 192 sq. ft
Counted as living area: Yes

Heated: Yes
Finished: Yes
Enclosed: Yes
Contiguous: Yes
Permitted: Yes
Wet space: No
Addition: No
Conversion: No

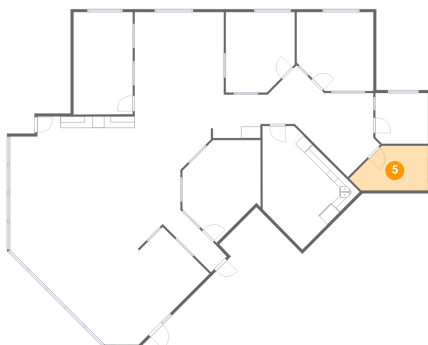
4 Floor 1 - Eat-in Kitchen



Dimensions: 16'10" x 19'11"
Area: 222 sq. ft
Counted as living area: Yes

Heated: Yes
Finished: Yes
Enclosed: Yes
Contiguous: Yes
Permitted: Yes
Wet space: No
Addition: No
Conversion: No

5 Floor 1 - Office

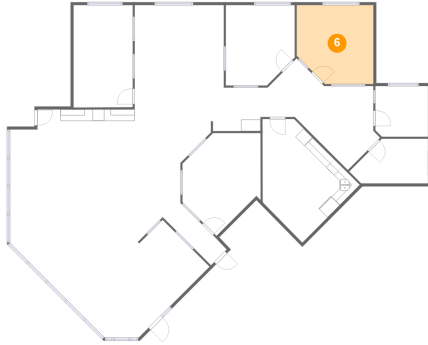


Dimensions: 13'8" x 7'9"
Area: 88 sq. ft
Counted as living area: Yes

Heated: Yes
Finished: Yes
Enclosed: Yes
Contiguous: Yes
Permitted: Yes
Wet space: No
Addition: No
Conversion: No

**280 Liberty Street Southeast, Salem, Oregon 97301,
United States, 100**

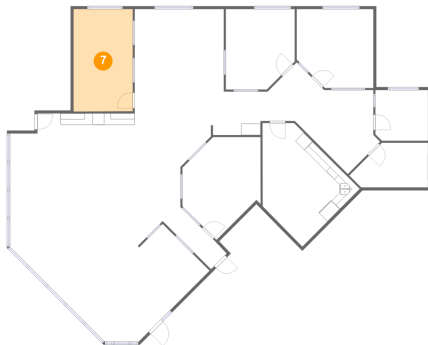
6 Floor 1 - Office



Dimensions: 13'4" x 13'8"
Area: 170 sq. ft
Counted as living area: Yes

Heated: Yes
Finished: Yes
Enclosed: Yes
Contiguous: Yes
Permitted: Yes
Wet space: No
Addition: No
Conversion: No

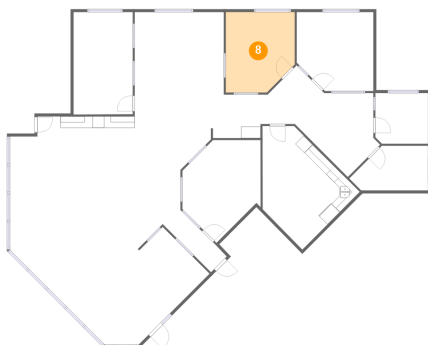
7 Floor 1 - Office



Dimensions: 10'3" x 17'8"
Area: 182 sq. ft
Counted as living area: Yes

Heated: Yes
Finished: Yes
Enclosed: Yes
Contiguous: Yes
Permitted: Yes
Wet space: No
Addition: No
Conversion: No

8 Floor 1 - Office

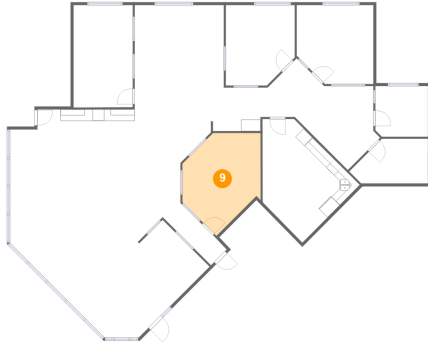


Dimensions: 12'0" x 13'11"
Area: 155 sq. ft
Counted as living area: Yes

Heated: Yes
Finished: Yes
Enclosed: Yes
Contiguous: Yes
Permitted: Yes
Wet space: No
Addition: No
Conversion: No

**280 Liberty Street Southeast, Salem, Oregon 97301,
United States, 100**

9 Floor 1 - Office



Dimensions: 13'6" x 17'9"
Area: 181 sq. ft
Counted as living area: Yes

Heated: Yes
Finished: Yes
Enclosed: Yes
Contiguous: Yes
Permitted: Yes
Wet space: No
Addition: No
Conversion: No

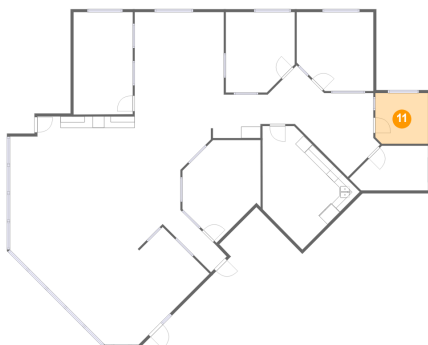
10 Floor 1 - Hall



Dimensions: 13'4" x 19'11"
Area: 196 sq. ft
Counted as living area: Yes

Heated: Yes
Finished: Yes
Enclosed: Yes
Contiguous: Yes
Permitted: Yes
Wet space: No
Addition: No
Conversion: No

11 Floor 1 - Office

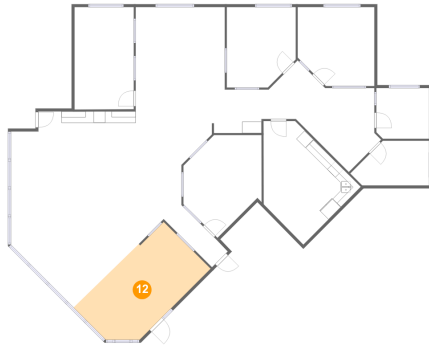


Dimensions: 9'2" x 8'10"
Area: 80 sq. ft
Counted as living area: Yes

Heated: Yes
Finished: Yes
Enclosed: Yes
Contiguous: Yes
Permitted: Yes
Wet space: No
Addition: No
Conversion: No

**280 Liberty Street Southeast, Salem, Oregon 97301,
United States, 100**

12 Floor 1 - Foyer



Dimensions: 21'6" x 11'11"
Area: 246 sq. ft
Counted as living area: Yes

Heated: Yes
Finished: Yes
Enclosed: Yes
Contiguous: Yes
Permitted: Yes
Wet space: No
Addition: No
Conversion: No

13 Floor 1 - Workspace



Dimensions: 15'5" x 14'3"
Area: 220 sq. ft
Counted as living area: Yes

Heated: Yes
Finished: Yes
Enclosed: Yes
Contiguous: Yes
Permitted: Yes
Wet space: No
Addition: No
Conversion: No