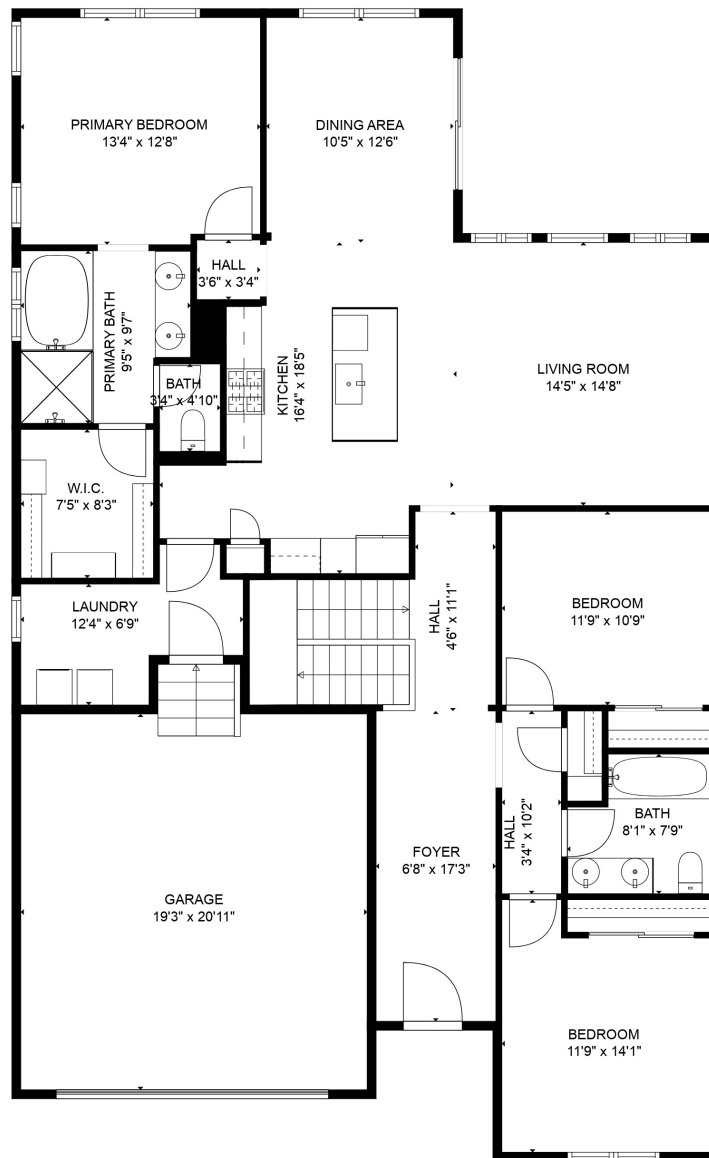


TOTAL: 1690 sq. ft
 Below Ground: 0 sq. ft, FLOOR 2: 1690 sq. ft
 EXCLUDED AREAS: BASEMENT: 1690 sq. ft, GARAGE: 415 sq. ft

SIZES AND DIMENSIONS ARE APPROXIMATE, ACTUAL MAY VARY.

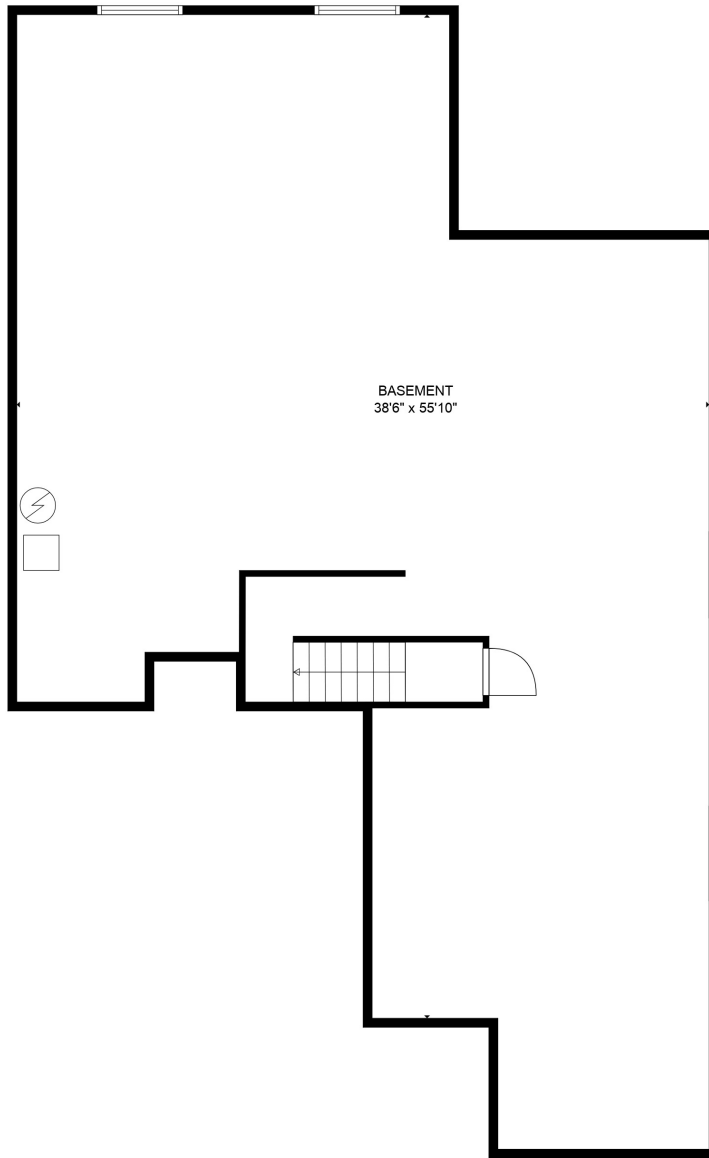


TOTAL: 1690 sq. ft

Below Ground: 0 sq. ft, FLOOR 2: 1690 sq. ft

EXCLUDED AREAS: BASEMENT: 1690 sq. ft, GARAGE: 415 sq. ft

SIZES AND DIMENSIONS ARE APPROXIMATE, ACTUAL MAY VARY.



BASEMENT
38'6" x 55'10"

TOTAL: 1690 sq. ft
Below Ground: 0 sq. ft, FLOOR 2: 1690 sq. ft
EXCLUDED AREAS: BASEMENT: 1690 sq. ft, GARAGE: 415 sq. ft

SIZES AND DIMENSIONS ARE APPROXIMATE, ACTUAL MAY VARY.