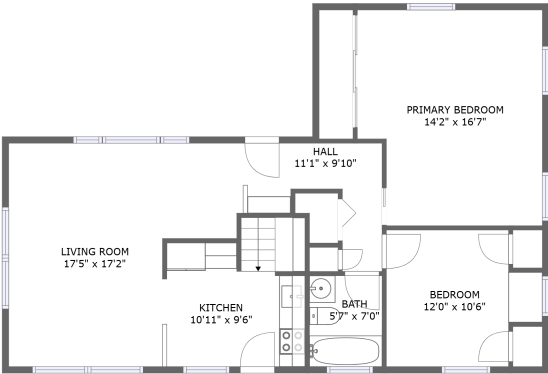
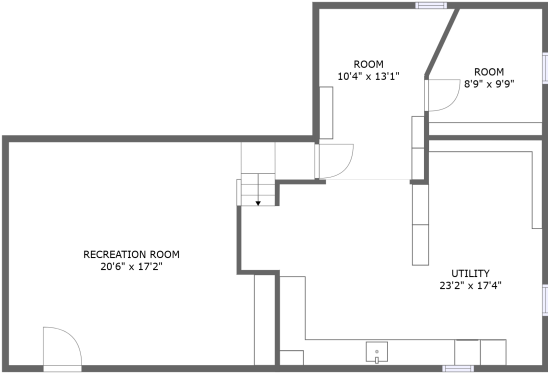


Home report

951 Parkside Ln,Lancaster,PA,US



FLOOR 2



FLOOR 1

Property summary



0
Garages



2
Bedrooms



1
Bathrooms



0
Half baths



2
Floors



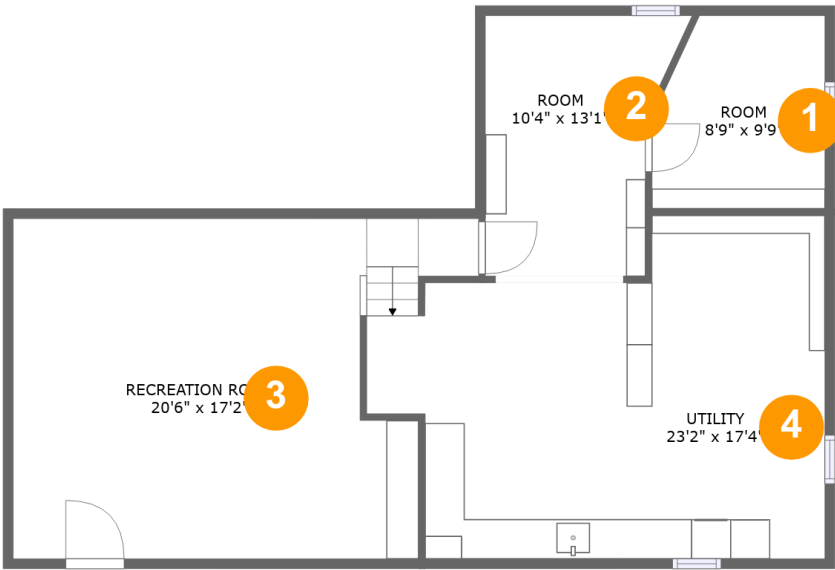
948
Gross living
area sqft



1,896
Total sqft

Home report

951 Parkside Ln,Lancaster,PA,US



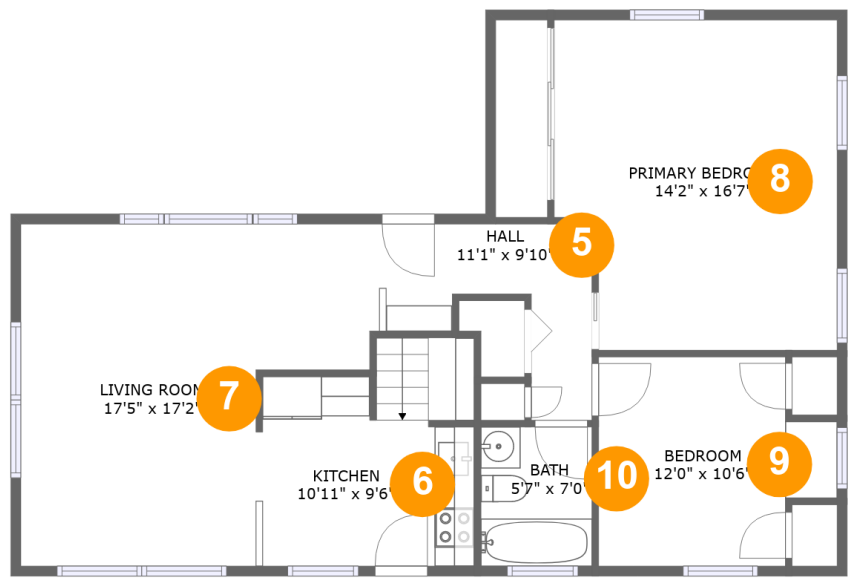
Room dimensions

Floor 1 Total sqft: 948 Living area: 0

#		Dimensions	sqft	Counted as living area
1	Room	8'9" x 9'9"	79 sq. ft	No
2	Room	10'4" x 13'1"	112 sq. ft	No
3	Recreation Room	20'6" x 17'2"	323 sq. ft	No
4	Utility	23'2" x 17'4"	347 sq. ft	No

Home report

951 Parkside Ln,Lancaster,PA,US

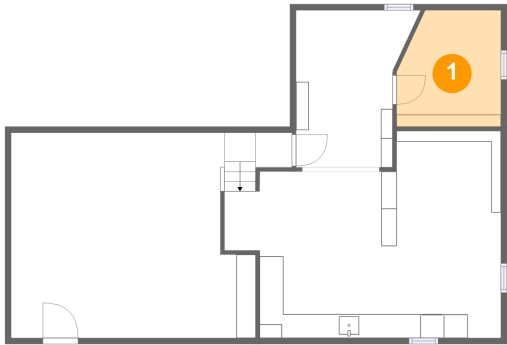


Room dimensions

Floor 2 Total sqft: 948 Living area: 948

#		Dimensions	sqft	Counted as living area
5	Hall	11'1" x 9'10"	66 sq. ft	Yes
6	Kitchen	10'11" x 9'6"	91 sq. ft	Yes
7	Living Room	17'5" x 17'2"	244 sq. ft	Yes
8	Primary Bedroom	14'2" x 16'7"	220 sq. ft	Yes
9	Bedroom	12'0" x 10'6"	108 sq. ft	Yes
10	Bath	5'7" x 7'0"	39 sq. ft	Yes

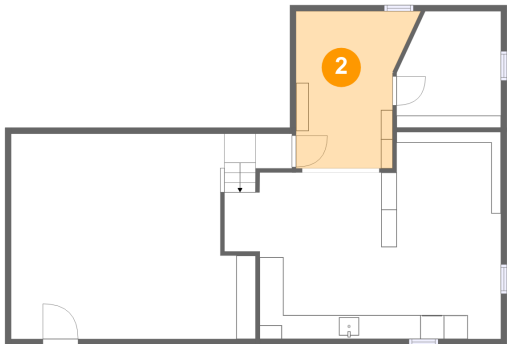
1 Floor 1 - Room



Dimensions: 8'9" x 9'9"
Area: 79 sq. ft
Counted as living area: No

Heated: Yes
Finished: No
Enclosed: Yes
Contiguous: Yes
Permitted: Yes
Wet space: No
Addition: No
Conversion: No

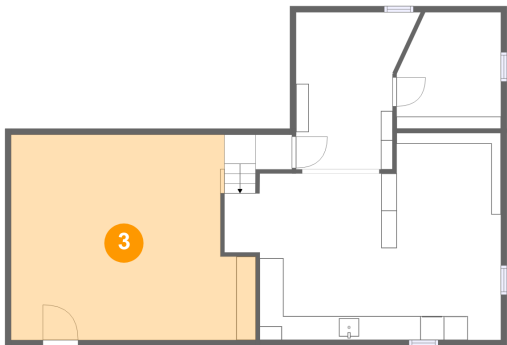
2 Floor 1 - Room



Dimensions: 10'4" x 13'1"
Area: 112 sq. ft
Counted as living area: No

Heated: Yes
Finished: No
Enclosed: Yes
Contiguous: Yes
Permitted: Yes
Wet space: No
Addition: No
Conversion: No

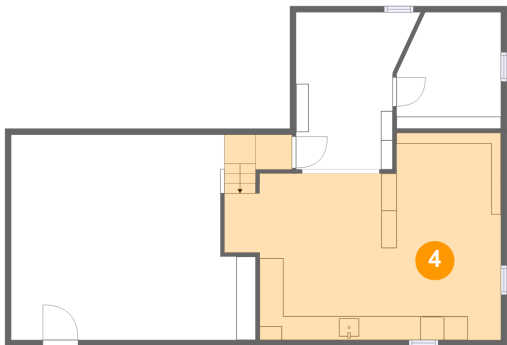
3 Floor 1 - Recreation Room



Dimensions: 20'6" x 17'2"
Area: 323 sq. ft
Counted as living area: No

Heated: Yes
Finished: No
Enclosed: Yes
Contiguous: Yes
Permitted: Yes
Wet space: No
Addition: No
Conversion: No

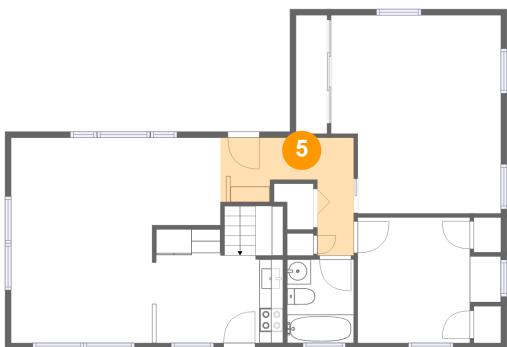
4 Floor 1 - Utility



Dimensions: 23'2" x 17'4"
Area: 347 sq. ft
Counted as living area: No

Heated: Yes
Finished: No
Enclosed: Yes
Contiguous: Yes
Permitted: Yes
Wet space: No
Addition: No
Conversion: No

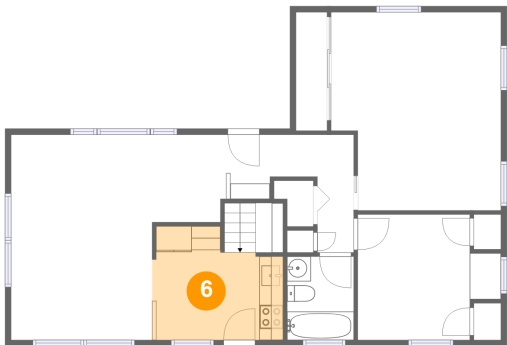
5 Floor 2 - Hall



Dimensions: 11'1" x 9'10"
Area: 66 sq. ft
Counted as living area: Yes

Heated: Yes
Finished: Yes
Enclosed: Yes
Contiguous: Yes
Permitted: Yes
Wet space: No
Addition: No
Conversion: No

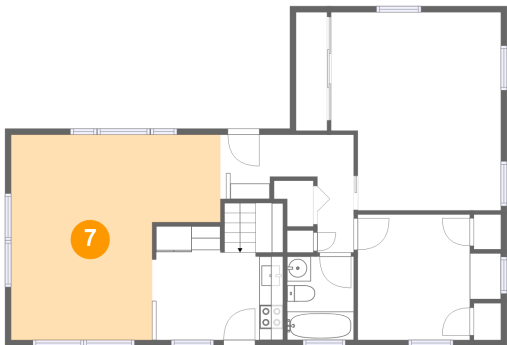
6 Floor 2 - Kitchen



Dimensions: 10'11" x 9'6"
Area: 91 sq. ft
Counted as living area: Yes

Heated: Yes
Finished: Yes
Enclosed: Yes
Contiguous: Yes
Permitted: Yes
Wet space: No
Addition: No
Conversion: No

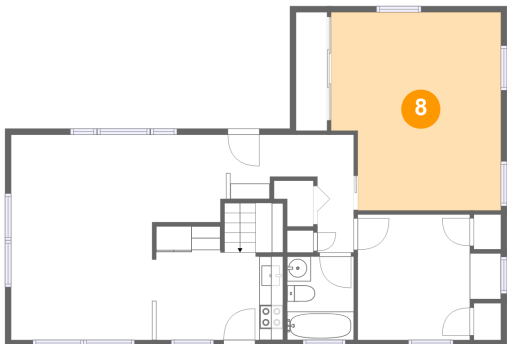
7 Floor 2 - Living Room



Dimensions: 17'5" x 17'2"
Area: 244 sq. ft
Counted as living area: Yes

Heated: Yes
Finished: Yes
Enclosed: Yes
Contiguous: Yes
Permitted: Yes
Wet space: No
Addition: No
Conversion: No

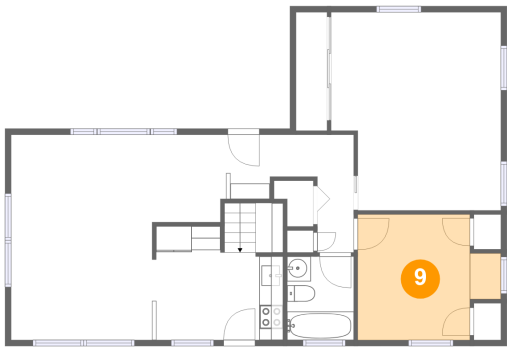
8 Floor 2 - Primary Bedroom



Dimensions: 14'2" x 16'7"
Area: 220 sq. ft
Counted as living area: Yes

Heated: Yes
Finished: Yes
Enclosed: Yes
Contiguous: Yes
Permitted: Yes
Wet space: No
Addition: No
Conversion: No

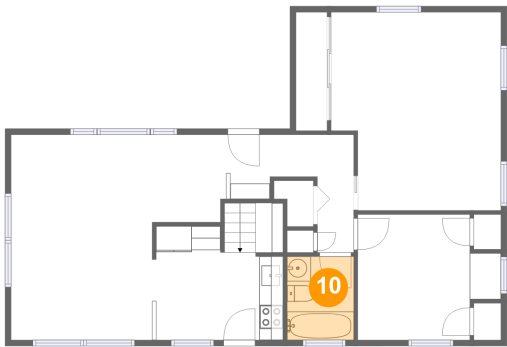
9 Floor 2 - Bedroom



Dimensions: 12'0" x 10'6"
Area: 108 sq. ft
Counted as living area: Yes

Heated: Yes
Finished: Yes
Enclosed: Yes
Contiguous: Yes
Permitted: Yes
Wet space: No
Addition: No
Conversion: No

10 Floor 2 - Bath



Dimensions: 5'7" x 7'0"
Area: 39 sq. ft
Counted as living area: Yes

Heated: Yes
Finished: Yes
Enclosed: Yes
Contiguous: Yes
Permitted: Yes
Wet space: Yes
Addition: No
Conversion: No