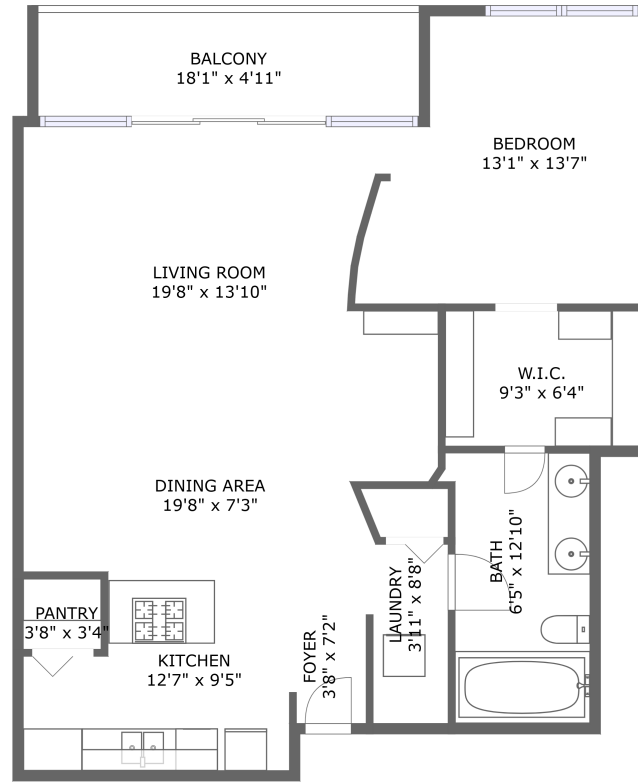



1530 South State Street, Dearborn Park, Chicago, Cook County, Illinois, United States, 60605



FLOOR 1

Property summary


 **0** Garages

 **1** Bedrooms

 **1** Bathrooms

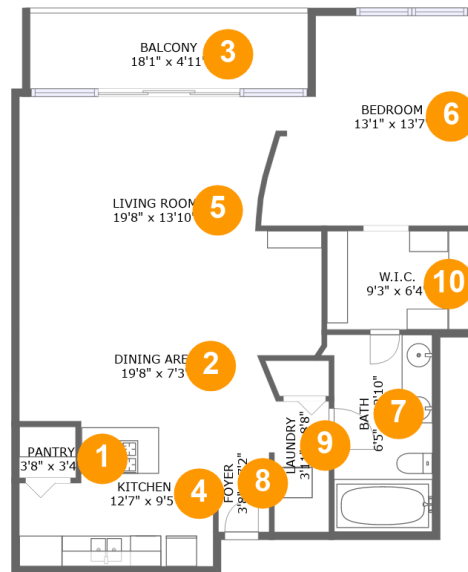
 **0** Half baths

 **1** Floors

 **944** Gross living area sqft

 **1,033** Total sqft

1530 South State Street, Dearborn Park, Chicago, Cook County, Illinois, United States, 60605



Room dimensions

Floor 1

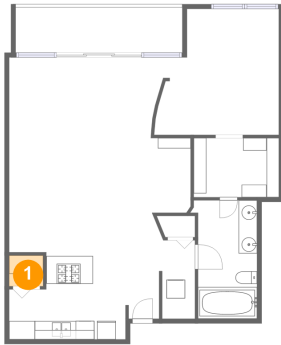
Total sqft: 1033

Living area: 944

#		Dimensions	sqft	Counted as living area
1	Pantry	3'8" x 3'4"	12 sq. ft	Yes
2	Dining Area	19'8" x 7'3"	127 sq. ft	Yes
3	Balcony	18'1" x 4'11"	89 sq. ft	No
4	Kitchen	12'7" x 9'5"	103 sq. ft	Yes
5	Living Room	19'8" x 13'10"	241 sq. ft	Yes
6	Bedroom	13'1" x 13'7"	159 sq. ft	Yes
7	Bath	6'5" x 12'10"	83 sq. ft	Yes
8	Foyer	3'8" x 7'2"	26 sq. ft	Yes
9	Laundry	3'11" x 8'8"	32 sq. ft	Yes
10	W.I.C.	9'3" x 6'4"	59 sq. ft	Yes

1530 South State Street, Dearborn Park, Chicago, Cook County, Illinois, United States, 60605

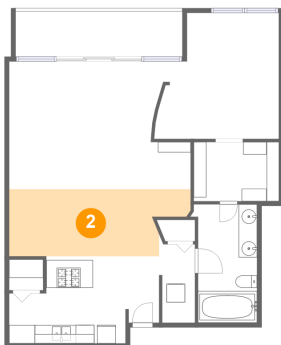
1 Floor 1 - Pantry



Dimensions: 3'8" x 3'4"
Area: 12 sq. ft
Counted as living area: Yes

Heated: Yes
Finished: Yes
Enclosed: Yes
Contiguous: Yes
Permitted: Yes
Wet space: No
Addition: No
Conversion: No

2 Floor 1 - Dining Area

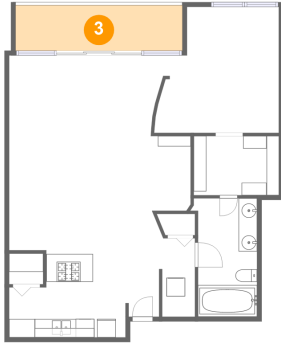


Dimensions: 19'8" x 7'3"
Area: 127 sq. ft
Counted as living area: Yes

Heated: Yes
Finished: Yes
Enclosed: Yes
Contiguous: Yes
Permitted: Yes
Wet space: No
Addition: No
Conversion: No

1530 South State Street, Dearborn Park, Chicago, Cook County, Illinois, United States, 60605

3 Floor 1 - Balcony



Dimensions: 18'1" x 4'11"
Area: 89 sq. ft
Counted as living area: No

Heated: No
Finished: Yes
Enclosed: No
Contiguous: Yes
Permitted: Yes
Wet space: No
Addition: No
Conversion: No

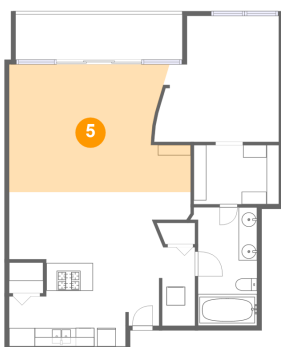
4 Floor 1 - Kitchen



Dimensions: 12'7" x 9'5"
Area: 103 sq. ft
Counted as living area: Yes

Heated: Yes
Finished: Yes
Enclosed: Yes
Contiguous: Yes
Permitted: Yes
Wet space: No
Addition: No
Conversion: No

5 Floor 1 - Living Room

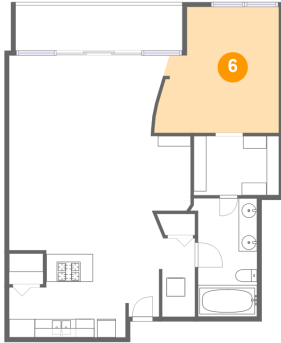


Dimensions: 19'8" x 13'10"
Area: 241 sq. ft
Counted as living area: Yes

Heated: Yes
Finished: Yes
Enclosed: Yes
Contiguous: Yes
Permitted: Yes
Wet space: No
Addition: No
Conversion: No

1530 South State Street, Dearborn Park, Chicago, Cook County, Illinois, United States, 60605

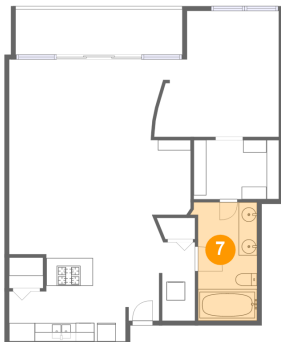
6 Floor 1 - Bedroom



Dimensions: 13'1" x 13'7"
Area: 159 sq. ft
Counted as living area: Yes

Heated: Yes
Finished: Yes
Enclosed: Yes
Contiguous: Yes
Permitted: Yes
Wet space: No
Addition: No
Conversion: No

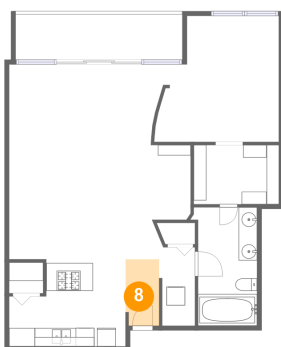
7 Floor 1 - Bath



Dimensions: 6'5" x 12'10"
Area: 83 sq. ft
Counted as living area: Yes

Heated: Yes
Finished: Yes
Enclosed: Yes
Contiguous: Yes
Permitted: Yes
Wet space: Yes
Addition: No
Conversion: No

8 Floor 1 - Foyer

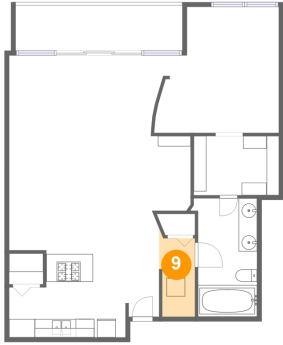


Dimensions: 3'8" x 7'2"
Area: 26 sq. ft
Counted as living area: Yes

Heated: Yes
Finished: Yes
Enclosed: Yes
Contiguous: Yes
Permitted: Yes
Wet space: No
Addition: No
Conversion: No

**1530 South State Street, Dearborn Park, Chicago,
Cook County, Illinois, United States, 60605**

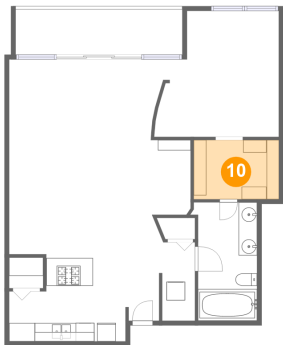
9 Floor 1 - Laundry



Dimensions: 3'11" x 8'8"
Area: 32 sq. ft
Counted as living area: Yes

Heated: Yes
Finished: Yes
Enclosed: Yes
Contiguous: Yes
Permitted: Yes
Wet space: No
Addition: No
Conversion: No

10 Floor 1 - W.I.C.



Dimensions: 9'3" x 6'4"
Area: 59 sq. ft
Counted as living area: Yes

Heated: Yes
Finished: Yes
Enclosed: Yes
Contiguous: Yes
Permitted: Yes
Wet space: No
Addition: No
Conversion: No