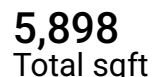
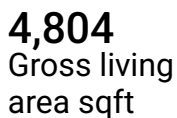
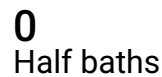
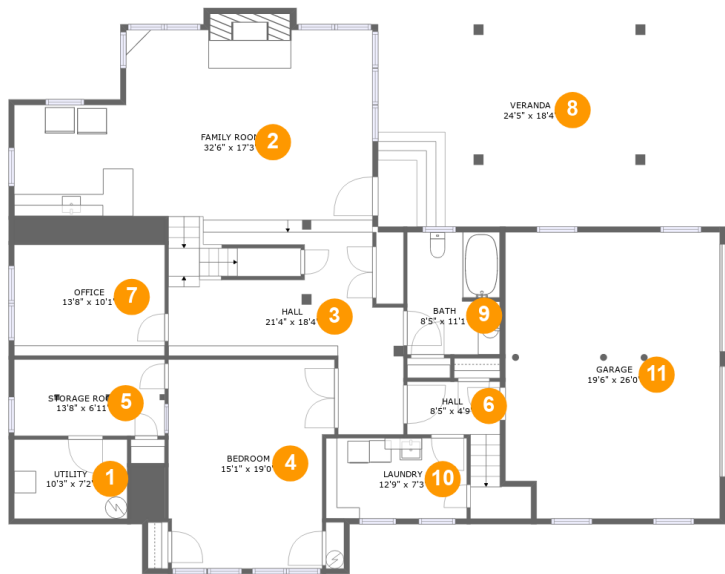


9 Brookside Terrace, North Caldwell, Essex County, New Jersey,  
United States, 07006



Home report

9 Brookside Terrace, North Caldwell, Essex County, New Jersey,  
United States, 07006



Room dimensions

Floor 1

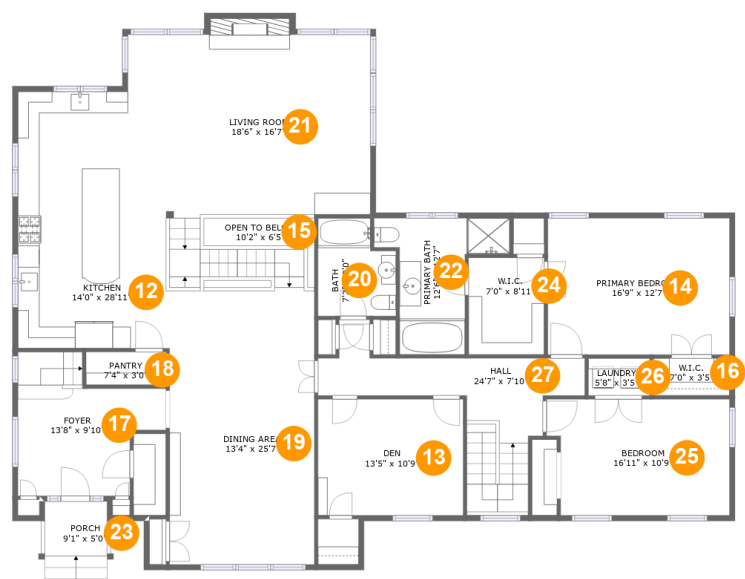
Total sqft: 2401

Living area: 1777

#		Max Dimensions	sqft	Included
1	Utility	10'3" x 7'2"	74 sq. ft	No
2	Family Room	32'6" x 17'3"	519 sq. ft	Yes
3	Hall	21'4" x 18'4"	263 sq. ft	Yes
4	Bedroom	15'1" x 19'0"	271 sq. ft	Yes
5	Storage Room	13'8" x 6'11"	95 sq. ft	Yes
6	Hall	8'5" x 4'9"	69 sq. ft	Yes
7	Office	13'8" x 10'1"	138 sq. ft	Yes
8	Veranda	24'5" x 18'4"	448 sq. ft	No
9	Bath	8'5" x 11'1"	92 sq. ft	Yes
10	Laundry	12'9" x 7'3"	93 sq. ft	Yes
11	Garage	19'6" x 26'0"	496 sq. ft	No

Home report

9 Brookside Terrace, North Caldwell, Essex County, New Jersey,  
United States, 07006



Room dimensions

Floor 2

Total sqft: 2543

Living area: 2462

#		Max Dimensions	sqft	Included
12	Kitchen	14'0" x 28'11"	352 sq. ft	Yes
13	Den	13'5" x 10'9"	144 sq. ft	Yes
14	Primary Bedroom	16'9" x 12'7"	211 sq. ft	Yes
15	Open To Below	10'2" x 6'5"	28 sq. ft	No
16	W.I.C.	7'0" x 3'5"	24 sq. ft	Yes
17	Foyer	13'8" x 9'10"	135 sq. ft	Yes
18	Pantry	7'4" x 3'0"	22 sq. ft	Yes
19	Dining Area	13'4" x 25'7"	403 sq. ft	Yes
20	Bath	7'2" x 9'0"	58 sq. ft	Yes
21	Living Room	18'6" x 16'7"	319 sq. ft	Yes
22	Primary Bath	12'6" x 12'7"	96 sq. ft	Yes

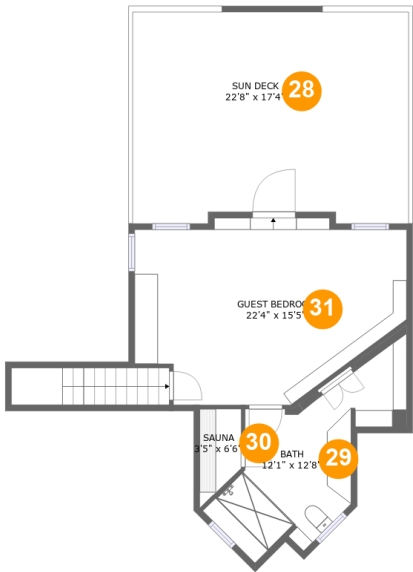
## Home report

**9 Brookside Terrace, North Caldwell, Essex County, New Jersey,  
United States, 07006**

#		Max Dimensions	sqft	Included
23	Porch	9'1" x 5'0"	40 sq. ft	No
24	W.I.C.	7'0" x 8'11"	62 sq. ft	Yes
25	Bedroom	16'11" x 10'9"	171 sq. ft	Yes
26	Laundry	5'8" x 3'5"	19 sq. ft	Yes
27	Hall	24'7" x 7'10"	162 sq. ft	Yes

Home report

9 Brookside Terrace, North Caldwell, Essex County, New Jersey,  
United States, 07006



Room dimensions

Floor 3 Total sqft: 954    Living area: 565

#		Max Dimensions	sqft	Included
28	Sun Deck	22'8" x 17'4"	385 sq. ft	No
29	Bath	12'1" x 12'8"	141 sq. ft	Yes
30	Sauna	3'5" x 6'6"	22 sq. ft	Yes
31	Guest Bedroom	22'4" x 15'5"	288 sq. ft	Yes

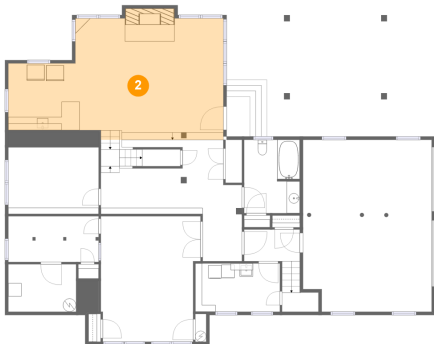
1 Floor 1 - Utility



Max Dimensions: 10'3" x 7'2"  
Calculated Area: 74 sq. ft  
Included: No

Heated: Yes  
Finished: No  
Enclosed: Yes  
Contiguous: Yes  
Permitted: Yes  
Wet space: No  
Addition: No  
Conversion: No

2 Floor 1 - Family Room



Max Dimensions: 32'6" x 17'3"  
Calculated Area: 519 sq. ft  
Included: Yes

Heated: Yes  
Finished: Yes  
Enclosed: Yes  
Contiguous: Yes  
Permitted: Yes  
Wet space: No  
Addition: No  
Conversion: No

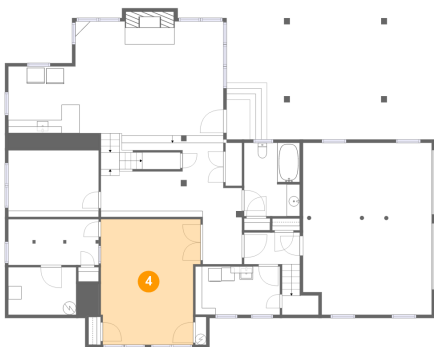
3 Floor 1 - Hall



Max Dimensions: 21'4" x 18'4"  
Calculated Area: 263 sq. ft  
Included: Yes

Heated: Yes  
Finished: Yes  
Enclosed: Yes  
Contiguous: Yes  
Permitted: Yes  
Wet space: No  
Addition: No  
Conversion: No

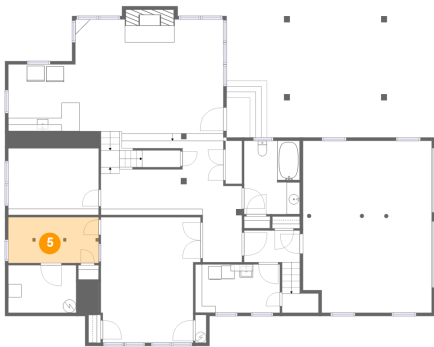
4 Floor 1 - Bedroom



Max Dimensions: 15'1" x 19'0"  
Calculated Area: 271 sq. ft  
Included: Yes

Heated: Yes  
Finished: Yes  
Enclosed: Yes  
Contiguous: Yes  
Permitted: Yes  
Wet space: No  
Addition: No  
Conversion: No

5 Floor 1 - Storage Room



Max Dimensions: 13'8" x 6'11"  
Calculated Area: 95 sq. ft  
Included: Yes

Heated: Yes  
Finished: Yes  
Enclosed: Yes  
Contiguous: Yes  
Permitted: Yes  
Wet space: No  
Addition: No  
Conversion: No

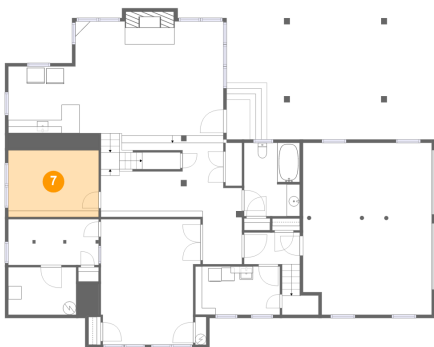
6 Floor 1 - Hall



Max Dimensions: 8'5" x 4'9"  
Calculated Area: 69 sq. ft  
Included: Yes

Heated: Yes  
Finished: Yes  
Enclosed: Yes  
Contiguous: Yes  
Permitted: Yes  
Wet space: No  
Addition: No  
Conversion: No

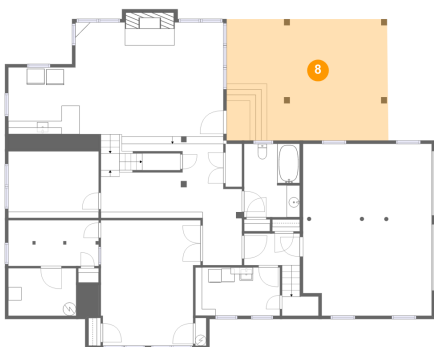
7 Floor 1 - Office



Max Dimensions: 13'8" x 10'1"  
Calculated Area: 138 sq. ft  
Included: Yes

Heated: Yes  
Finished: Yes  
Enclosed: Yes  
Contiguous: Yes  
Permitted: Yes  
Wet space: No  
Addition: No  
Conversion: No

8 Floor 1 - Veranda



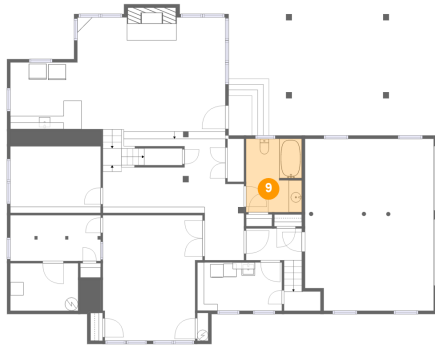
Max Dimensions: 24'5" x 18'4"  
Calculated Area: 448 sq. ft  
Included: No

Heated: No  
Finished: No  
Enclosed: No  
Contiguous: No  
Permitted: No  
Wet space: No  
Addition: No  
Conversion: No



9 Brookside Terrace, North Caldwell, Essex County, New Jersey,  
United States, 07006

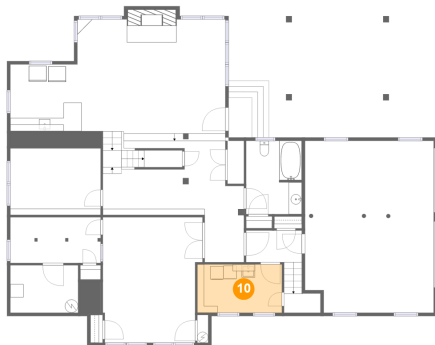
9 Floor 1 - Bath



Max Dimensions: 8'5" x  
11'1"  
Calculated Area: 92 sq. ft  
Included: Yes

Heated: Yes  
Finished: Yes  
Enclosed: Yes  
Contiguous:  
Yes  
Permitted: Yes  
Wet space: Yes  
Addition: No  
Conversion: No

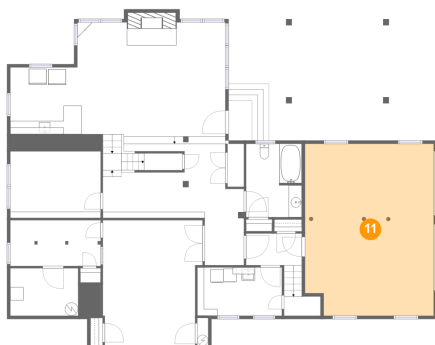
10 Floor 1 - Laundry



Max Dimensions: 12'9" x  
7'3"  
Calculated Area: 93 sq. ft  
Included: Yes

Heated: Yes  
Finished: Yes  
Enclosed: Yes  
Contiguous:  
Yes  
Permitted: Yes  
Wet space: No  
Addition: No  
Conversion: No

11 Floor 1 - Garage

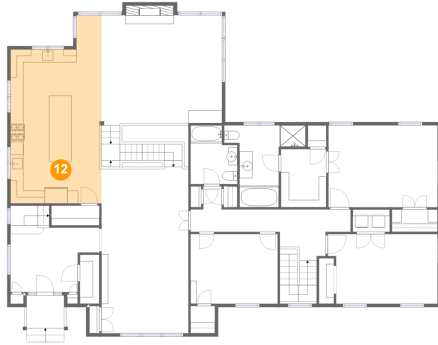


Max Dimensions: 19'6" x  
26'0"  
Calculated Area: 496 sq. ft  
Included: No

Heated: No  
Finished: No  
Enclosed: Yes  
Contiguous:  
Yes  
Permitted: Yes  
Wet space: No  
Addition: No  
Conversion: No

9 Brookside Terrace, North Caldwell, Essex County, New Jersey,  
United States, 07006

**12** Floor 2 - Kitchen



Max Dimensions: 14'0" x 28'11"  
Calculated Area: 352 sq. ft  
Included: Yes

Heated: Yes  
Finished: Yes  
Enclosed: Yes  
Contiguous: Yes  
Permitted: Yes  
Wet space: No  
Addition: No  
Conversion: No

**13** Floor 2 - Den



Max Dimensions: 13'5" x 10'9"  
Calculated Area: 144 sq. ft  
Included: Yes

Heated: Yes  
Finished: Yes  
Enclosed: Yes  
Contiguous: Yes  
Permitted: Yes  
Wet space: No  
Addition: No  
Conversion: No

**14** Floor 2 - Primary Bedroom



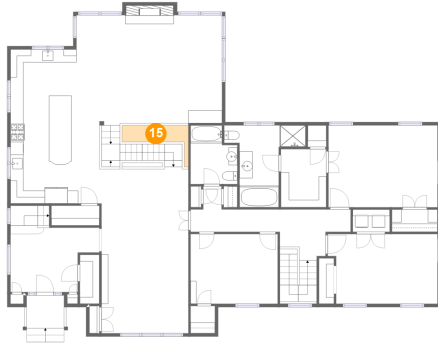
Max Dimensions: 16'9" x 12'7"  
Calculated Area: 211 sq. ft  
Included: Yes

Heated: Yes  
Finished: Yes  
Enclosed: Yes  
Contiguous: Yes  
Permitted: Yes  
Wet space: No  
Addition: No  
Conversion: No

9 Brookside Terrace, North Caldwell, Essex County, New Jersey,  
United States, 07006

**15** Floor 2 - Open To Below

---



Max Dimensions: 10'2" x 6'5"  
Calculated Area: 28 sq. ft  
Included: No

Heated: No  
Finished: No  
Enclosed: No  
Contiguous: Yes  
Permitted: No  
Wet space: No  
Addition: No  
Conversion: No

**16** Floor 2 - W.I.C.

---



Max Dimensions: 7'0" x 3'5"  
Calculated Area: 24 sq. ft  
Included: Yes

Heated: Yes  
Finished: Yes  
Enclosed: Yes  
Contiguous: Yes  
Permitted: Yes  
Wet space: No  
Addition: No  
Conversion: No

**17** Floor 2 - Foyer

---



Max Dimensions: 13'8" x 9'10"  
Calculated Area: 135 sq. ft  
Included: Yes

Heated: Yes  
Finished: Yes  
Enclosed: Yes  
Contiguous: Yes  
Permitted: Yes  
Wet space: No  
Addition: No  
Conversion: No

9 Brookside Terrace, North Caldwell, Essex County, New Jersey,  
United States, 07006

**18** Floor 2 - Pantry

---

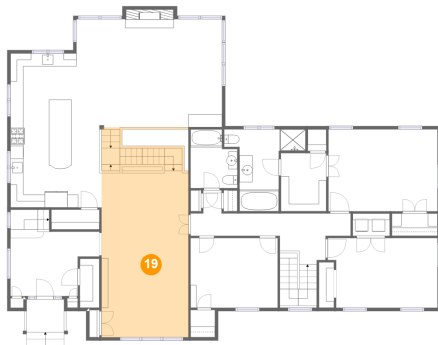


Max Dimensions: 7'4" x 3'0"  
Calculated Area: 22 sq. ft  
Included: Yes

Heated: Yes  
Finished: Yes  
Enclosed: Yes  
Contiguous: Yes  
Permitted: Yes  
Wet space: No  
Addition: No  
Conversion: No

**19** Floor 2 - Dining Area

---



Max Dimensions: 13'4" x 25'7"  
Calculated Area: 403 sq. ft  
Included: Yes

Heated: Yes  
Finished: Yes  
Enclosed: Yes  
Contiguous: Yes  
Permitted: Yes  
Wet space: No  
Addition: No  
Conversion: No

**20** Floor 2 - Bath

---



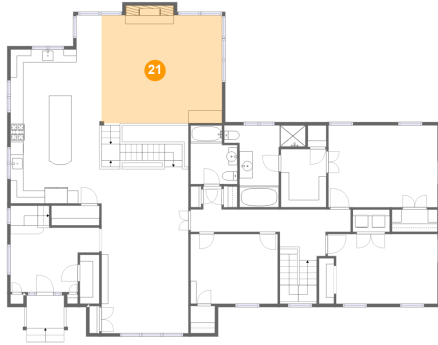
Max Dimensions: 7'2" x 9'0"  
Calculated Area: 58 sq. ft  
Included: Yes

Heated: Yes  
Finished: Yes  
Enclosed: Yes  
Contiguous: Yes  
Permitted: Yes  
Wet space: Yes  
Addition: No  
Conversion: No

9 Brookside Terrace, North Caldwell, Essex County, New Jersey,  
United States, 07006

**21** Floor 2 - Living Room

---



Max Dimensions: 18'6" x 16'7"  
Calculated Area: 319 sq. ft  
Included: Yes

Heated: Yes  
Finished: Yes  
Enclosed: Yes  
Contiguous: Yes  
Permitted: Yes  
Wet space: No  
Addition: No  
Conversion: No

**22** Floor 2 - Primary Bath

---



Max Dimensions: 12'6" x 12'7"  
Calculated Area: 96 sq. ft  
Included: Yes

Heated: Yes  
Finished: Yes  
Enclosed: Yes  
Contiguous: Yes  
Permitted: Yes  
Wet space: Yes  
Addition: No  
Conversion: No

**23** Floor 2 - Porch

---



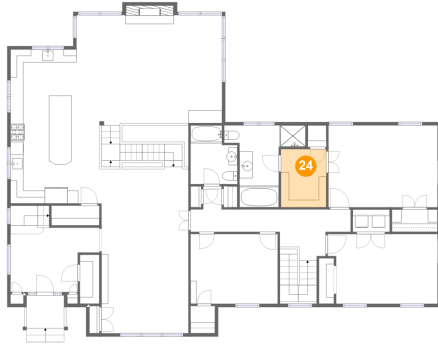
Max Dimensions: 9'1" x 5'0"  
Calculated Area: 40 sq. ft  
Included: No

Heated: No  
Finished: Yes  
Enclosed: No  
Contiguous: Yes  
Permitted: Yes  
Wet space: No  
Addition: No  
Conversion: No

9 Brookside Terrace, North Caldwell, Essex County, New Jersey,  
United States, 07006

**24** Floor 2 - W.I.C.

---



Max Dimensions: 7'0" x 8'11"  
Calculated Area: 62 sq. ft  
Included: Yes

Heated: Yes  
Finished: Yes  
Enclosed: Yes  
Contiguous: Yes  
Permitted: Yes  
Wet space: No  
Addition: No  
Conversion: No

**25** Floor 2 - Bedroom

---



Max Dimensions: 16'11" x 10'9"  
Calculated Area: 171 sq. ft  
Included: Yes

Heated: Yes  
Finished: Yes  
Enclosed: Yes  
Contiguous: Yes  
Permitted: Yes  
Wet space: No  
Addition: No  
Conversion: No

**26** Floor 2 - Laundry

---



Max Dimensions: 5'8" x 3'5"  
Calculated Area: 19 sq. ft  
Included: Yes

Heated: Yes  
Finished: Yes  
Enclosed: Yes  
Contiguous: Yes  
Permitted: Yes  
Wet space: No  
Addition: No  
Conversion: No

9 Brookside Terrace, North Caldwell, Essex County, New Jersey,  
United States, 07006

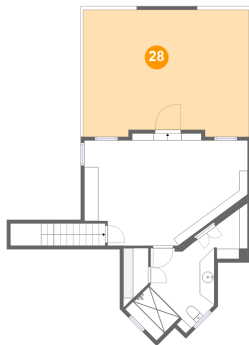
**27** Floor 2 - Hall



Max Dimensions: 24'7" x 7'10"  
Calculated Area: 162 sq. ft  
Included: Yes

Heated: Yes  
Finished: Yes  
Enclosed: Yes  
Contiguous: Yes  
Permitted: Yes  
Wet space: No  
Addition: No  
Conversion: No

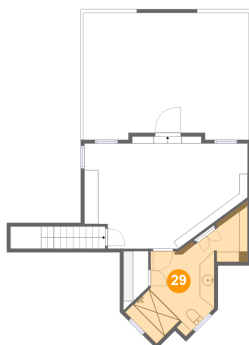
**28** Floor 3 - Sun Deck



Max Dimensions: 22'8" x 17'4"  
Calculated Area: 385 sq. ft  
Included: No

Heated: No  
Finished: Yes  
Enclosed: No  
Contiguous: Yes  
Permitted: Yes  
Wet space: No  
Addition: No  
Conversion: No

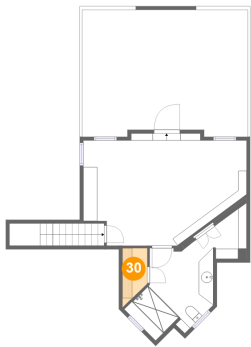
**29** Floor 3 - Bath



Max Dimensions: 12'1" x 12'8"  
Calculated Area: 141 sq. ft  
Included: Yes

Heated: Yes  
Finished: Yes  
Enclosed: Yes  
Contiguous: Yes  
Permitted: Yes  
Wet space: Yes  
Addition: No  
Conversion: No

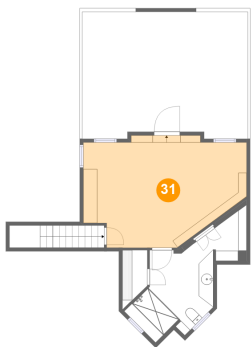
30 Floor 3 - Sauna



Max Dimensions: 3'5" x 6'6"  
Calculated Area: 22 sq. ft  
Included: Yes

Heated: Yes  
Finished: Yes  
Enclosed: Yes  
Contiguous: Yes  
Permitted: Yes  
Wet space: No  
Addition: No  
Conversion: No

31 Floor 3 - Guest Bedroom



Max Dimensions: 22'4" x 15'5"  
Calculated Area: 288 sq. ft  
Included: Yes

Heated: Yes  
Finished: Yes  
Enclosed: Yes  
Contiguous: Yes  
Permitted: Yes  
Wet space: No  
Addition: No  
Conversion: No