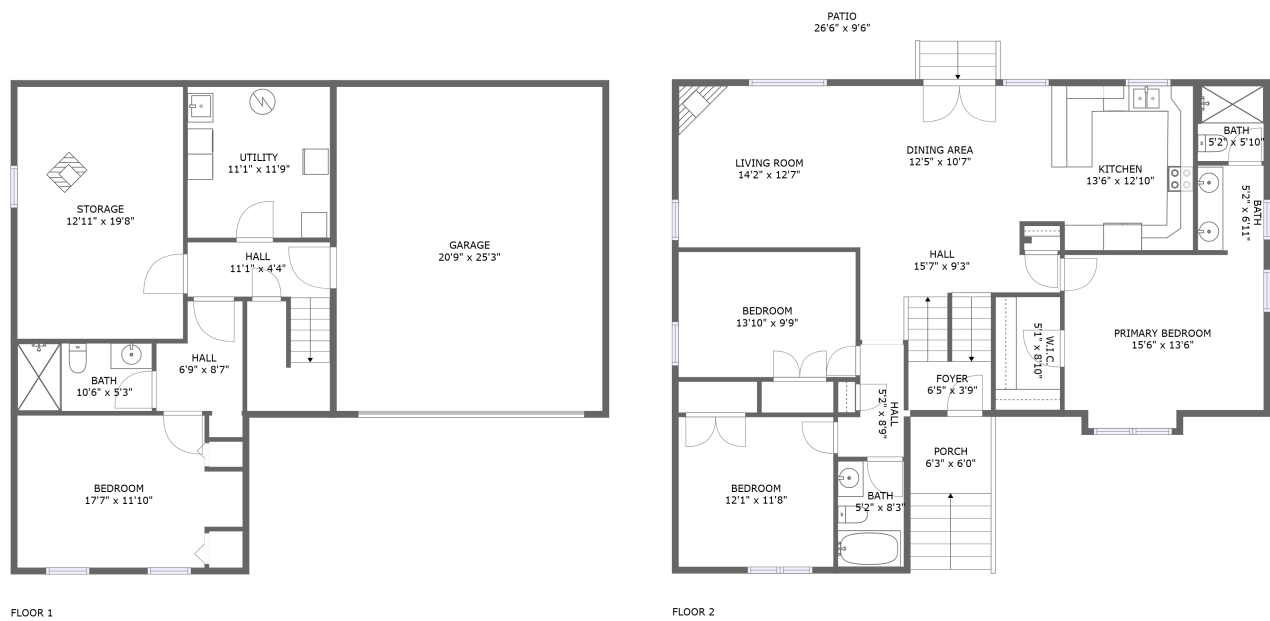




Home report


7123 Tall Oak Lane, Roanoke, Roanoke County, Virginia, United States, 24018




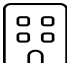
Property summary


 **1** Garages


 **4** Bedrooms

 **3** Bathrooms

 **0** Half baths

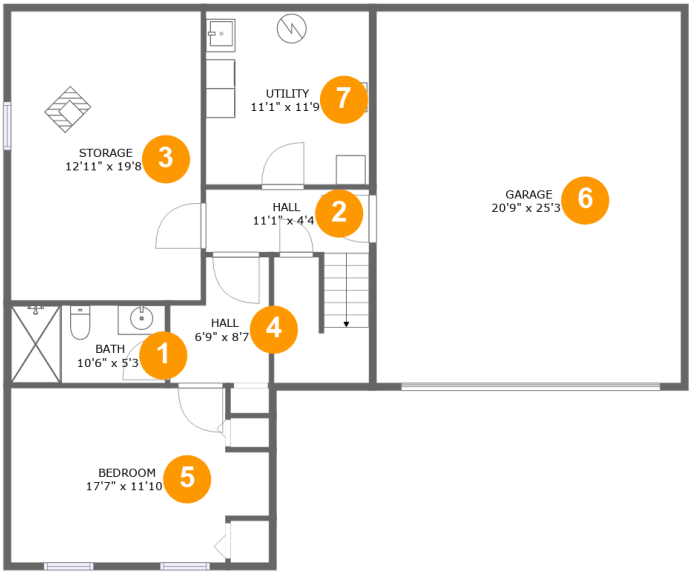
 **2** Floors

 **1,936** Gross living area sqft

 **3,215** Total sqft

Home report

7123 Tall Oak Lane, Roanoke, Roanoke County, Virginia, United States, 24018



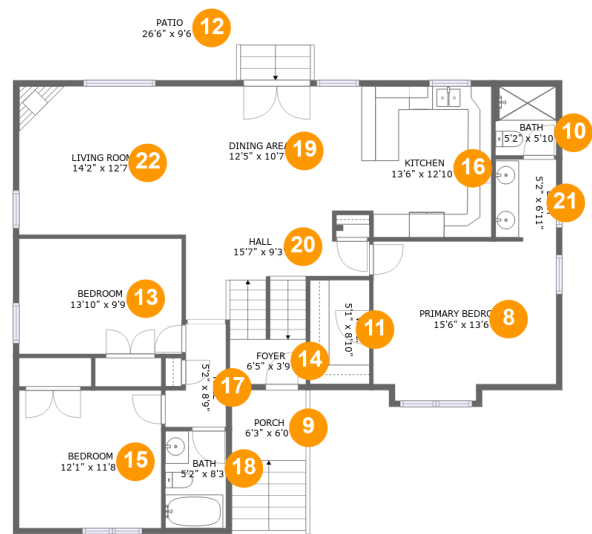
Room dimensions

Floor 1 Total sqft: 1449    Living area: 475

#		Max Dimensions	sqft	Included
1	Bath	10'6" x 5'3"	55 sq. ft	Yes
2	Hall	11'1" x 4'4"	48 sq. ft	Yes
3	Storage	12'11" x 19'8"	254 sq. ft	No
4	Hall	6'9" x 8'7"	50 sq. ft	Yes
5	Bedroom	17'7" x 11'10"	186 sq. ft	Yes
6	Garage	20'9" x 25'3"	523 sq. ft	No
7	Utility	11'1" x 11'9"	131 sq. ft	No

Home report

7123 Tall Oak Lane, Roanoke, Roanoke County, Virginia, United States, 24018



Room dimensions

Floor 2 Total sqft: 1766 Living area: 1461

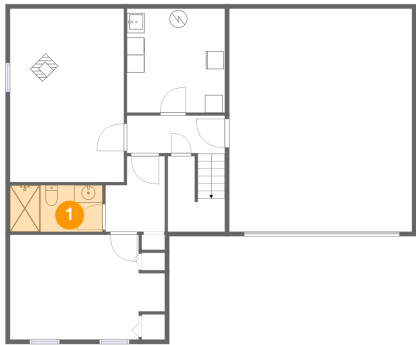
#		Max Dimensions	sqft	Included
8	Primary Bedroom	15'6" x 13'6"	198 sq. ft	Yes
9	Porch	6'3" x 6'0"	75 sq. ft	No
10	Bath	5'2" x 5'10"	30 sq. ft	Yes
11	W.I.C.	5'1" x 8'10"	45 sq. ft	Yes
12	Patio	26'6" x 9'6"	230 sq. ft	No
13	Bedroom	13'10" x 9'9"	135 sq. ft	Yes
14	Foyer	6'5" x 3'9"	58 sq. ft	Yes
15	Bedroom	12'1" x 11'8"	141 sq. ft	Yes
16	Kitchen	13'6" x 12'10"	165 sq. ft	Yes
17	Hall	5'2" x 8'9"	35 sq. ft	Yes
18	Bath	5'2" x 8'3"	42 sq. ft	Yes

Home report

7123 Tall Oak Lane, Roanoke, Roanoke County, Virginia, United States, 24018

#		Max Dimensions	sqft	Included
19	Dining Area	12'5" x 10'7"	131 sq. ft	Yes
20	Hall	15'7" x 9'3"	93 sq. ft	Yes
21	Bath	5'2" x 6'11"	35 sq. ft	Yes
22	Living Room	14'2" x 12'7"	178 sq. ft	Yes

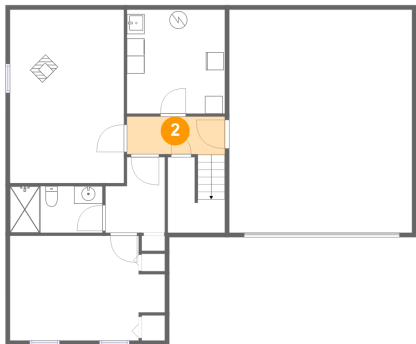
1 Floor 1 - Bath



Max Dimensions: 10'6" x 5'3"  
Calculated Area: 55 sq. ft  
Included: Yes

Heated: Yes  
Finished: Yes  
Enclosed: Yes  
Contiguous: Yes  
Permitted: Yes  
Wet space: Yes  
Addition: No  
Conversion: No

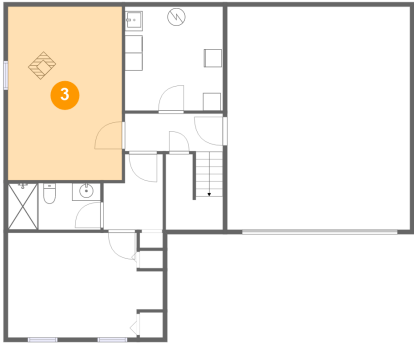
2 Floor 1 - Hall



Max Dimensions: 11'1" x 4'4"  
Calculated Area: 48 sq. ft  
Included: Yes

Heated: Yes  
Finished: Yes  
Enclosed: Yes  
Contiguous: Yes  
Permitted: Yes  
Wet space: No  
Addition: No  
Conversion: No

3 Floor 1 - Storage



Max Dimensions: 12'11" x 19'8"  
Calculated Area: 254 sq. ft  
Included: No

Heated: No  
Finished: No  
Enclosed: No  
Contiguous: Yes  
Permitted: Yes  
Wet space: No  
Addition: No  
Conversion: No

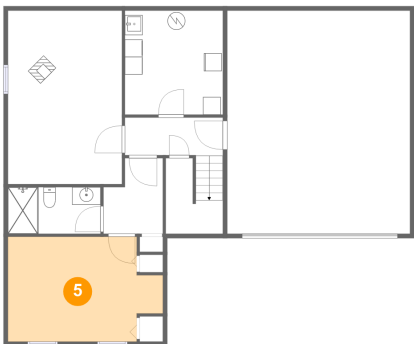
4 Floor 1 - Hall



Max Dimensions: 6'9" x 8'7"  
Calculated Area: 50 sq. ft  
Included: Yes

Heated: Yes  
Finished: Yes  
Enclosed: Yes  
Contiguous: Yes  
Permitted: Yes  
Wet space: No  
Addition: No  
Conversion: No

5 Floor 1 - Bedroom



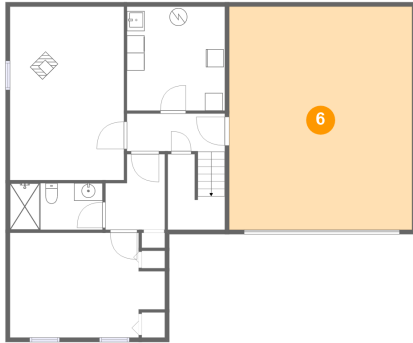
Max Dimensions: 17'7" x 11'10"  
Calculated Area: 186 sq. ft  
Included: Yes

Heated: Yes  
Finished: Yes  
Enclosed: Yes  
Contiguous: Yes  
Permitted: Yes  
Wet space: No  
Addition: No  
Conversion: No

## Home report

7123 Tall Oak Lane, Roanoke, Roanoke County, Virginia, United States, 24018

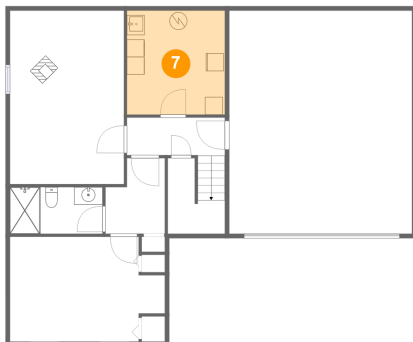
### 6 Floor 1 - Garage



Max Dimensions: 20'9" x 25'3"  
Calculated Area: 523 sq. ft  
Included: No

Heated: No  
Finished: No  
Enclosed: Yes  
Contiguous: Yes  
Permitted: Yes  
Wet space: No  
Addition: No  
Conversion: No

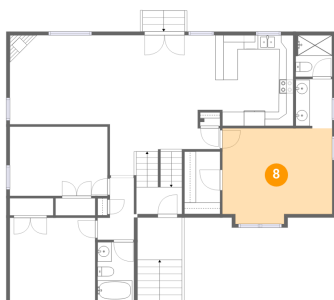
### 7 Floor 1 - Utility



Max Dimensions: 11'1" x 11'9"  
Calculated Area: 131 sq. ft  
Included: No

Heated: Yes  
Finished: No  
Enclosed: Yes  
Contiguous: Yes  
Permitted: Yes  
Wet space: No  
Addition: No  
Conversion: No

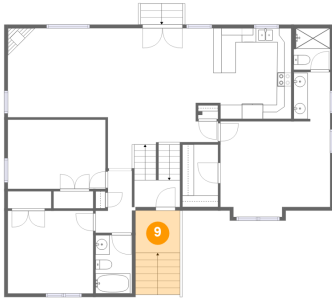
### 8 Floor 2 - Primary Bedroom



Max Dimensions: 15'6" x 13'6"  
Calculated Area: 198 sq. ft  
Included: Yes

Heated: Yes  
Finished: Yes  
Enclosed: Yes  
Contiguous: Yes  
Permitted: Yes  
Wet space: No  
Addition: No  
Conversion: No

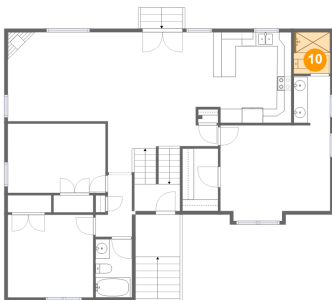
## 9 Floor 2 - Porch



Max Dimensions: 6'3" x 6'0"  
Calculated Area: 75 sq. ft  
Included: No

Heated: No  
Finished: Yes  
Enclosed: No  
Contiguous: Yes  
Permitted: Yes  
Wet space: No  
Addition: No  
Conversion: No

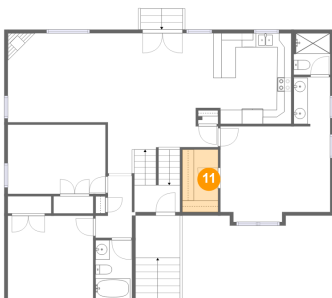
## 10 Floor 2 - Bath



Max Dimensions: 5'2" x 5'10"  
Calculated Area: 30 sq. ft  
Included: Yes

Heated: Yes  
Finished: Yes  
Enclosed: Yes  
Contiguous: Yes  
Permitted: Yes  
Wet space: Yes  
Addition: No  
Conversion: No

## 11 Floor 2 - W.I.C.



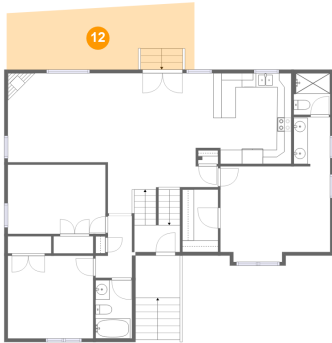
Max Dimensions: 5'1" x 8'10"  
Calculated Area: 45 sq. ft  
Included: Yes

Heated: Yes  
Finished: Yes  
Enclosed: Yes  
Contiguous: Yes  
Permitted: Yes  
Wet space: No  
Addition: No  
Conversion: No



7123 Tall Oak Lane, Roanoke, Roanoke County, Virginia, United States, 24018

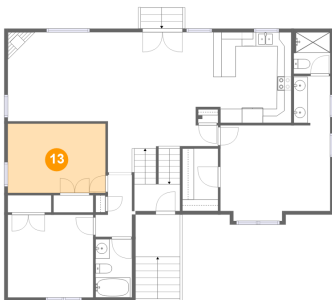
## 12 Floor 2 - Patio



Max Dimensions: 26'6" x 9'6"  
Calculated Area: 230 sq. ft  
Included: No

Heated: No  
Finished: Yes  
Enclosed: No  
Contiguous: Yes  
Permitted: Yes  
Wet space: No  
Addition: No  
Conversion: No

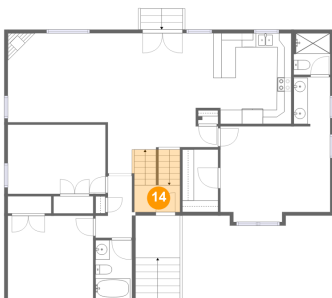
## 13 Floor 2 - Bedroom



Max Dimensions: 13'10" x 9'9"  
Calculated Area: 135 sq. ft  
Included: Yes

Heated: Yes  
Finished: Yes  
Enclosed: Yes  
Contiguous: Yes  
Permitted: Yes  
Wet space: No  
Addition: No  
Conversion: No

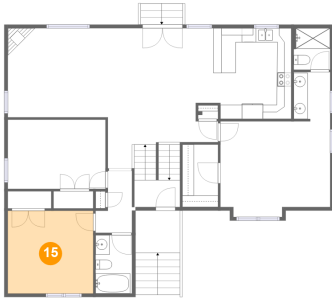
## 14 Floor 2 - Foyer



Max Dimensions: 6'5" x 3'9"  
Calculated Area: 58 sq. ft  
Included: Yes

Heated: Yes  
Finished: Yes  
Enclosed: Yes  
Contiguous: Yes  
Permitted: Yes  
Wet space: No  
Addition: No  
Conversion: No

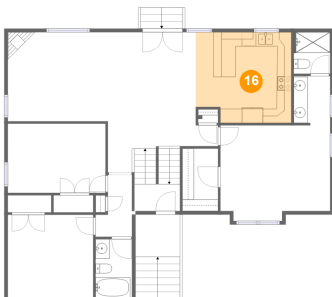
## 15 Floor 2 - Bedroom



Max Dimensions: 12'1" x 11'8"  
Calculated Area: 141 sq. ft  
Included: Yes

Heated: Yes  
Finished: Yes  
Enclosed: Yes  
Contiguous: Yes  
Permitted: Yes  
Wet space: No  
Addition: No  
Conversion: No

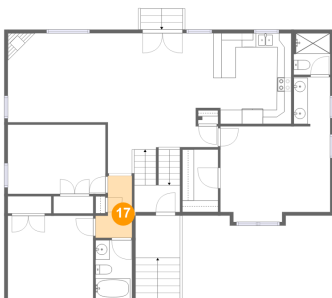
## 16 Floor 2 - Kitchen



Max Dimensions: 13'6" x 12'10"  
Calculated Area: 165 sq. ft  
Included: Yes

Heated: Yes  
Finished: Yes  
Enclosed: Yes  
Contiguous: Yes  
Permitted: Yes  
Wet space: No  
Addition: No  
Conversion: No

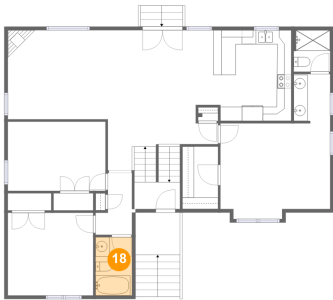
## 17 Floor 2 - Hall



Max Dimensions: 5'2" x 8'9"  
Calculated Area: 35 sq. ft  
Included: Yes

Heated: Yes  
Finished: Yes  
Enclosed: Yes  
Contiguous: Yes  
Permitted: Yes  
Wet space: No  
Addition: No  
Conversion: No

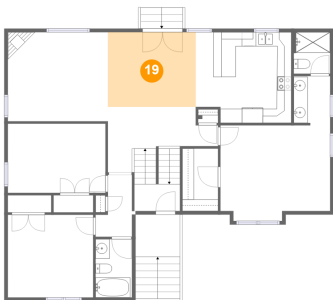
18 Floor 2 - Bath



Max Dimensions: 5'2" x 8'3"  
Calculated Area: 42 sq. ft  
Included: Yes

Heated: Yes  
Finished: Yes  
Enclosed: Yes  
Contiguous: Yes  
Permitted: Yes  
Wet space: Yes  
Addition: No  
Conversion: No

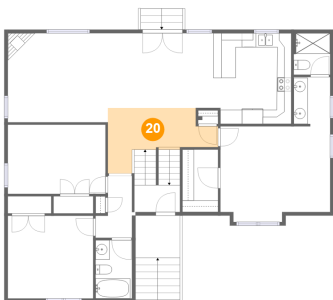
19 Floor 2 - Dining Area



Max Dimensions: 12'5" x 10'7"  
Calculated Area: 131 sq. ft  
Included: Yes

Heated: Yes  
Finished: Yes  
Enclosed: Yes  
Contiguous: Yes  
Permitted: Yes  
Wet space: No  
Addition: No  
Conversion: No

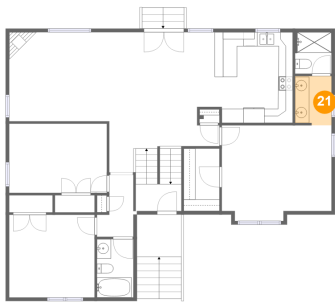
20 Floor 2 - Hall



Max Dimensions: 15'7" x 9'3"  
Calculated Area: 93 sq. ft  
Included: Yes

Heated: Yes  
Finished: Yes  
Enclosed: Yes  
Contiguous: Yes  
Permitted: Yes  
Wet space: No  
Addition: No  
Conversion: No

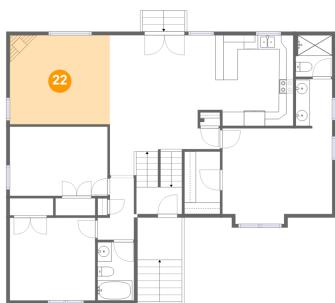
21 Floor 2 - Bath



Max Dimensions: 5'2" x 6'11"  
Calculated Area: 35 sq. ft  
Included: Yes

Heated: Yes  
Finished: Yes  
Enclosed: Yes  
Contiguous: Yes  
Permitted: Yes  
Wet space: Yes  
Addition: No  
Conversion: No

22 Floor 2 - Living Room



Max Dimensions: 14'2" x 12'7"  
Calculated Area: 178 sq. ft  
Included: Yes

Heated: Yes  
Finished: Yes  
Enclosed: Yes  
Contiguous: Yes  
Permitted: Yes  
Wet space: No  
Addition: No  
Conversion: No